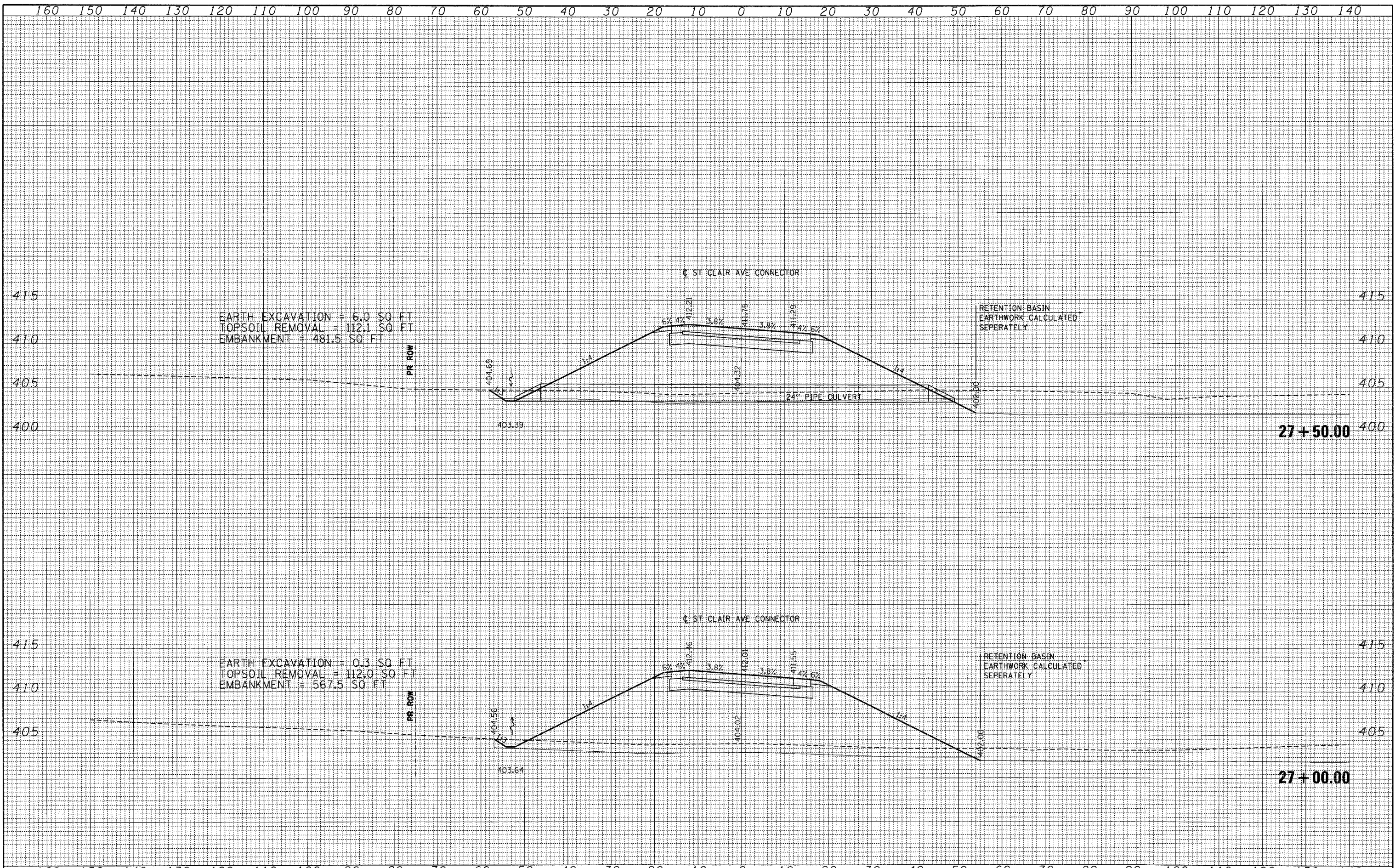


DATE	
BY	
FINAL SURVEY	
PLANNED	
NOTE BOOK	
AREAS CHECKED	
NO.	

DATE	
BY	
ORIGINAL SURVEY	
PLANNED	
NOTE BOOK	
AREAS CHECKED	
NO.	



EARTH EXCAVATION = 6.0 SQ FT
 TOPSOIL REMOVAL = 112.1 SQ FT
 EMBANKMENT = 481.5 SQ FT

RETENTION BASIN
 EARTHWORK CALCULATED
 SEPERATELY

EARTH EXCAVATION = 0.3 SQ FT
 TOPSOIL REMOVAL = 112.0 SQ FT
 EMBANKMENT = 567.5 SQ FT

RETENTION BASIN
 EARTHWORK CALCULATED
 SEPERATELY

FILE NAME =	USER NAME = #USER#	DESIGNED - JB	REVISED -	STATE OF ILLINOIS DEPARTMENT OF TRANSPORTATION	CROSS SECTIONS ST. CLAIR AVE CONNECTOR				F.A. RTE.	SECTION	COUNTY	TOTAL SHEETS	SHEET NO.
#FILE#	PLLOT SCALE = #SCALE#	DRAWN - AG	REVISED -		998	82-2-1K	ST. CLAIR	353	320				
PLLOT DATE = #DATE#	DATE - 10/21/11	CHECKED - JB	REVISED -		SCALE: SHEET NO. OF SHEETS STA. 27+00.00 TO STA. 27+50.00				CONTRACT NO. 76E06				
		DATE - 10/21/11	REVISED -		ILLINOIS FED. AID PROJECT								