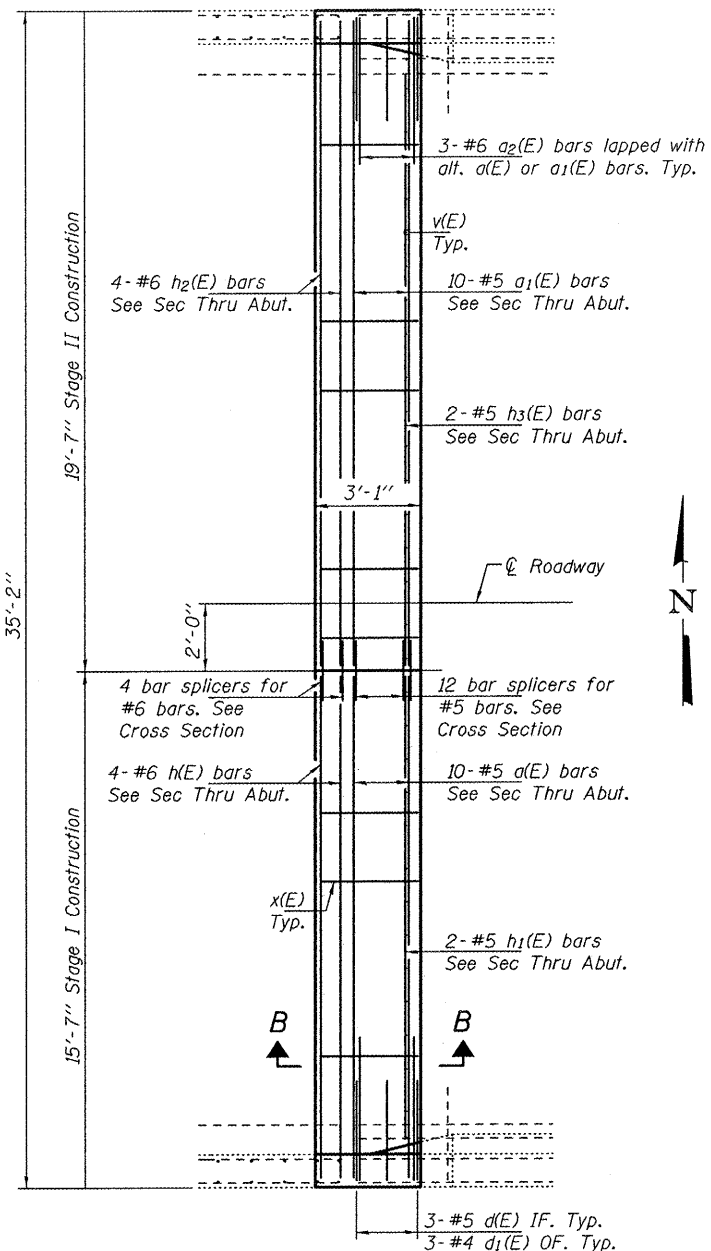


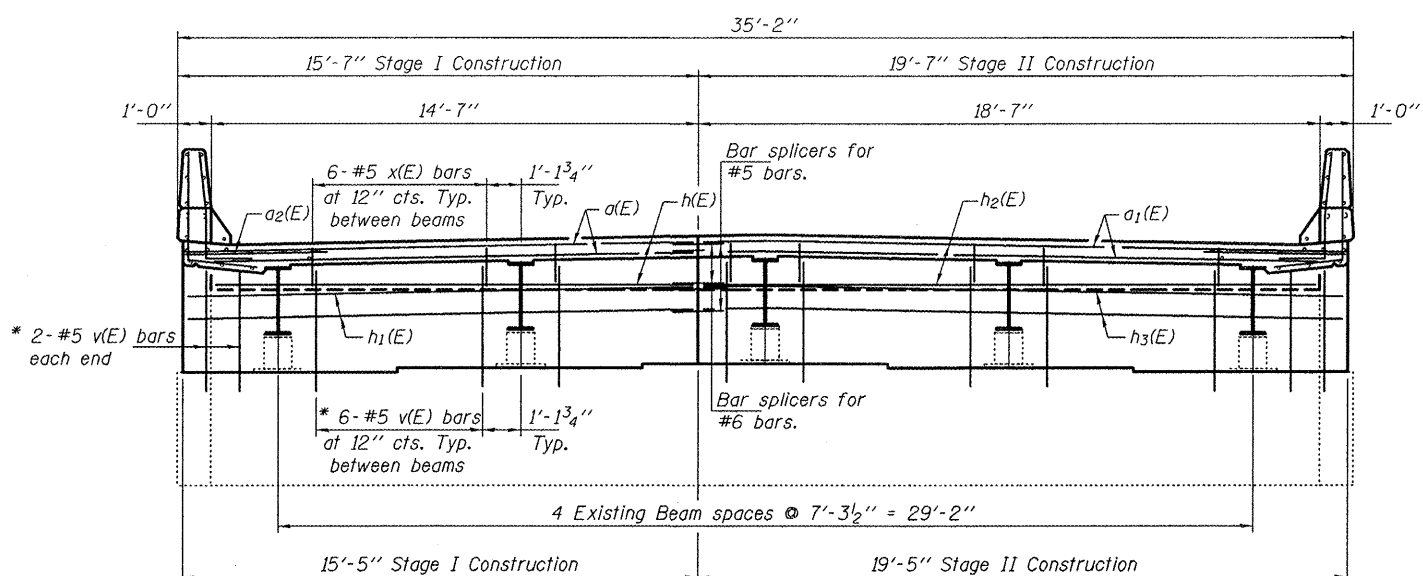
REMOVAL PLAN

Hatched areas indicate removal



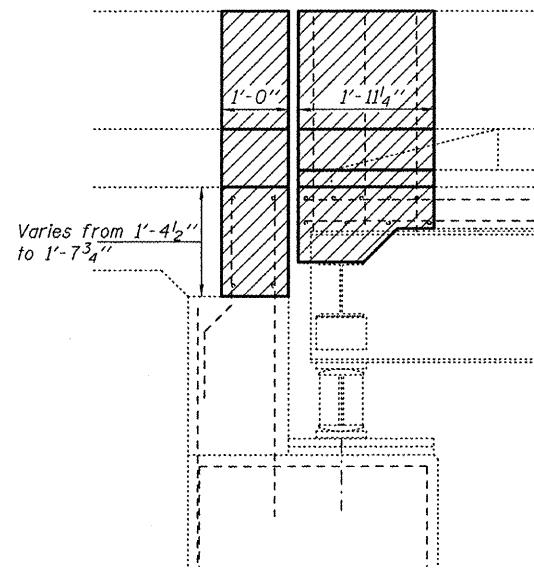
REPLACEMENT PLAN

West abutment shown
East abutment similar by rotation

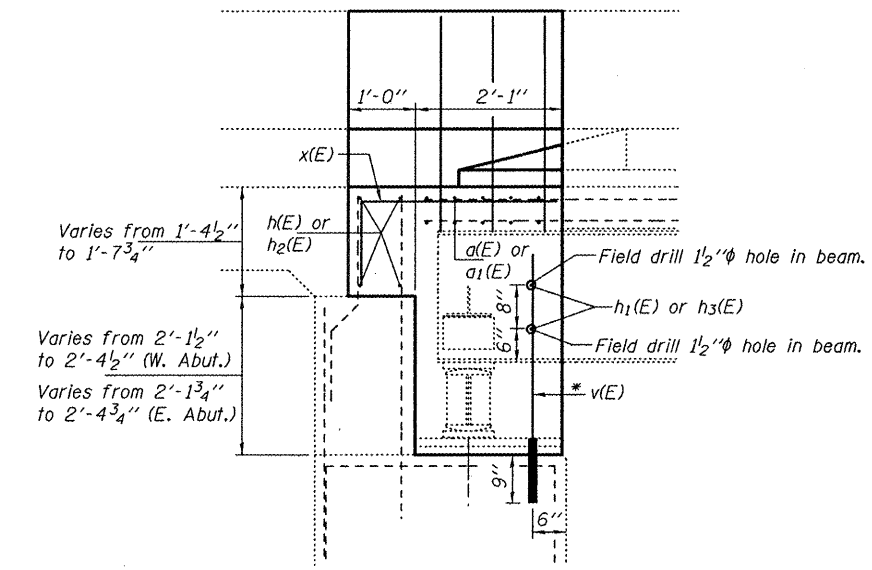


CROSS SECTION

(Looking West)



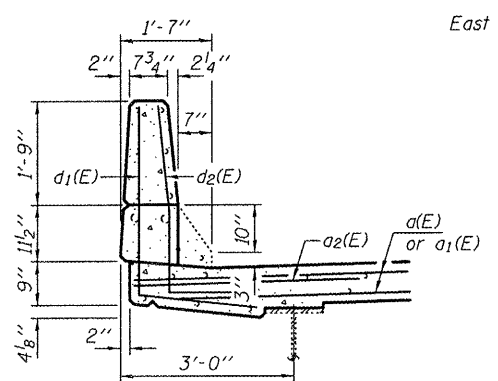
SECTION A-A



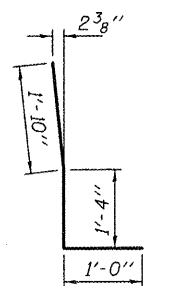
SECTION B-B

BILL OF MATERIAL

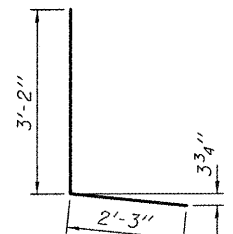
Bar	No.	Size	Length	Shape
a(E)	20	#5	14'-3"	—
a1(E)	20	#5	18'-6"	—
a2(E)	12	#6	4'-0"	—
d1(E)	12	#4	5'-5"	L
d2(E)	12	#5	4'-2"	L
h(E)	8	#6	15'-0"	—
h1(E)	4	#5	14'-10"	—
h2(E)	8	#6	19'-3"	—
h3(E)	4	#5	19'-0"	—
v(E)	56	#5	3'-6"	—
x(E)	48	#5	3'-9"	—
Reinforcement Bars, Epoxy Coated			Pound	1830
Concrete Superstructure			Cu. Yds.	25.4
Concrete Removal			Cu. Yds.	9.4



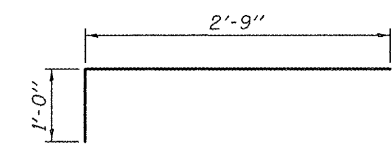
SECTION THRU PARAPET



BAR d2(E)



BAR d1(E)



BAR X(E)

* Epoxy grout v(E) bars in 9" min. holes according to Article 584 of the Standard Specifications. Cost included in the cost of Reinforcement Bars, Epoxy Coated.

DESIGNED ATH
CHECKED IJL
DRAWN baliva
CHECKED ATH IJL

EXAMINED
PASSED
ACTING ENGINEER OF STRUCTURAL SERVICES
ACTING ENGINEER OF BRIDGES AND STRUCTURES

DATE NOVEMBER 23, 2011
REVISED
REVISED

STATE OF ILLINOIS
DEPARTMENT OF TRANSPORTATION

REPAIR DETAILS AT ABUTMENTS
SN 082-0095

SHEET NO. 2 OF 10 SHEETS

F.A. RTE.	SECTION	COUNTY	TOTAL SHEETS	SHEET NO.
805	125BR-2	ST. CLAIR	17	8
				CONTRACT NO. 76E99
ILLINOIS FED. AID PROJECT				