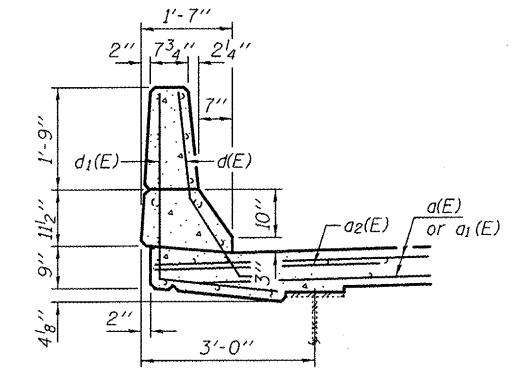
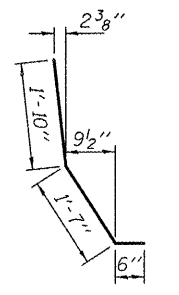


REMOVAL PLAN
Hatched areas indicate removal

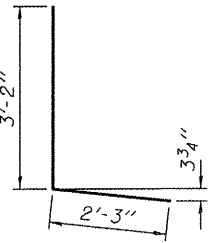
REPLACEMENT PLAN



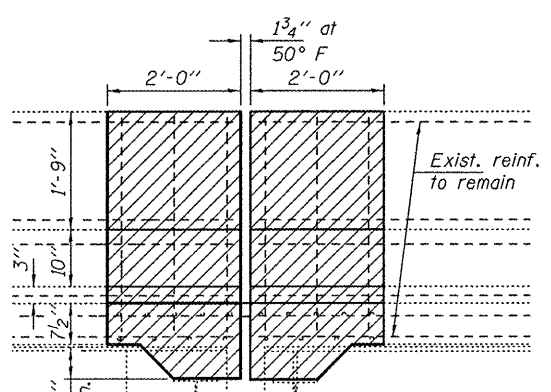
SECTION THRU PARAPET



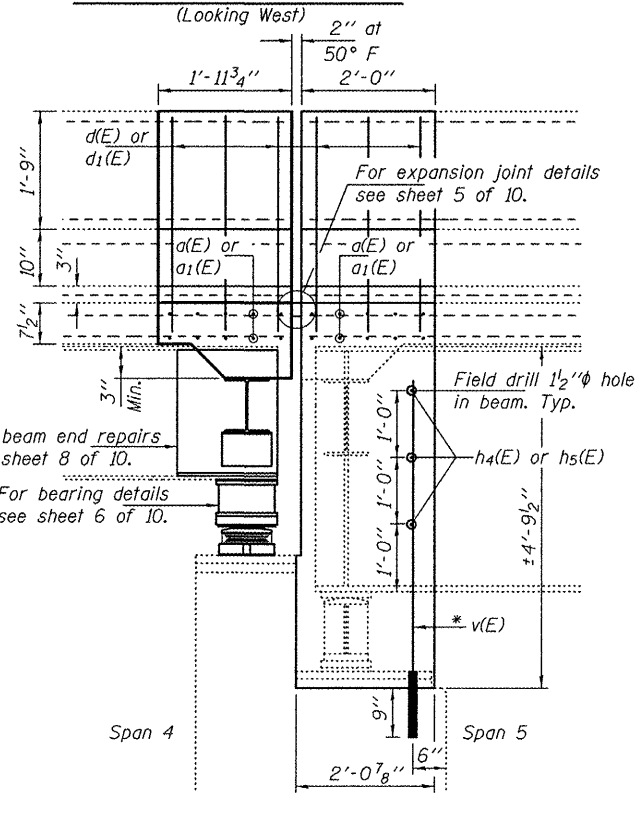
BAR d(E)



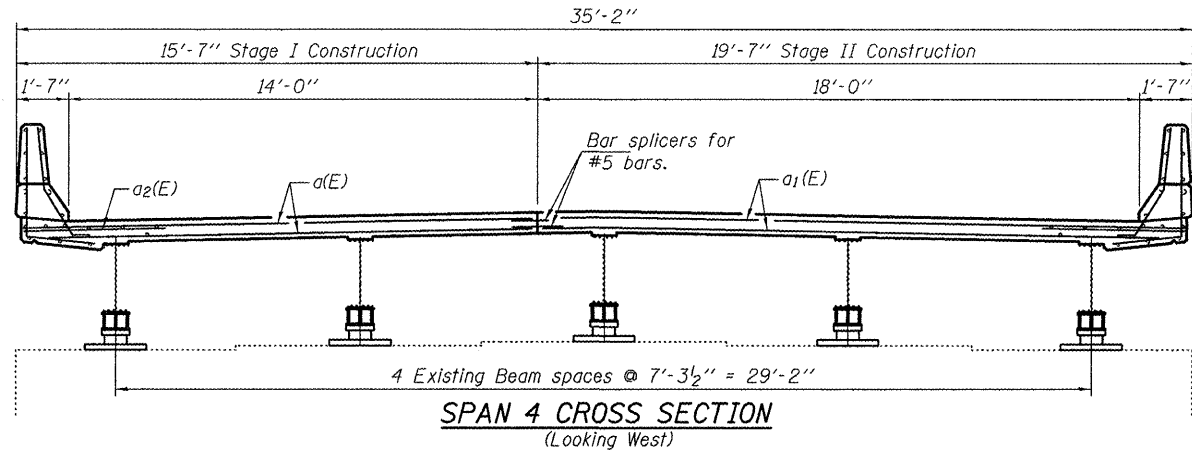
BAR d1(E)



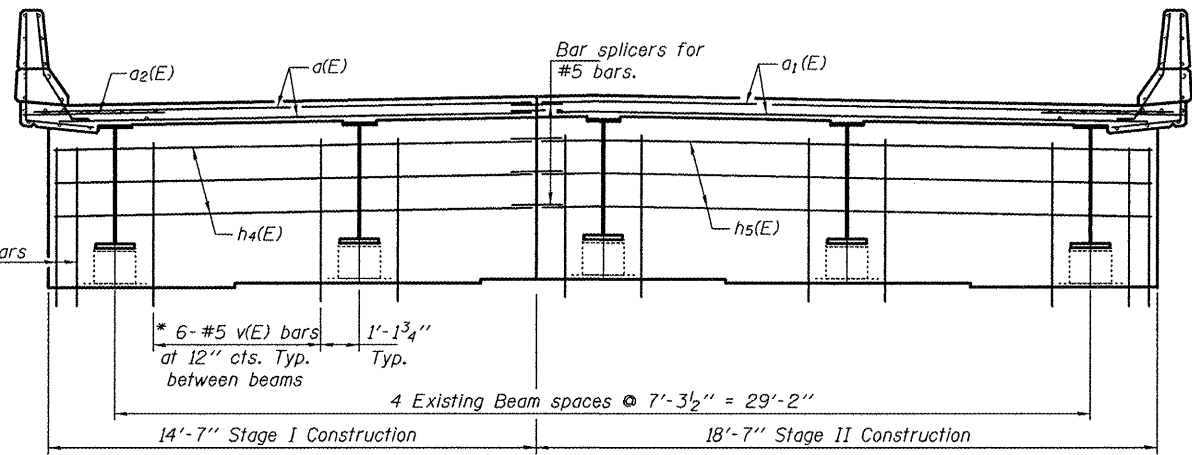
SECTION A-A
(Pier 1)



SECTION B-B
(Pier 1)



SPAN 4 CROSS SECTION
(Looking West)



SPAN 5 CROSS SECTION
(Looking West)

* Epoxy grout v(E) bars in 9" min. holes according to Article 584 of the Standard Specifications. Cost included in the cost of Reinforcement Bars, Epoxy Coated.

BILL OF MATERIAL

Bar	No.	Size	Length	Shape
a(E)	20	#5	14'-3"	—
a1(E)	20	#5	18'-6"	—
a2(E)	12	#6	4'-0"	—
d(E)	12	#5	3'-11"	┌
d1(E)	12	#4	5'-5"	┌
h4(E)	3	#5	14'-0"	—
h5(E)	3	#5	18'-3"	—
v(E)	28	#5	3'-6"	—
Reinforcement Bars, Epoxy Coated		Pound	1050	
Concrete Superstructure		Cu. Yds.	16.7	
Concrete Removal		Cu. Yds.	5.2	

DESIGNED ATH	EXAMINED	DATE NOVEMBER 23, 2011
CHECKED IJL	PASSED	REVISED
DRAWN baliva	ACTING ENGINEER OF BRIDGES AND STRUCTURES	REVISED
CHECKED ATH IJL		

STATE OF ILLINOIS
DEPARTMENT OF TRANSPORTATION

REPAIR DETAILS AT PIER 1
SN 082-0095
SHEET NO. 3 OF 10 SHEETS

F.A. RTE.	SECTION	COUNTY	TOTAL SHEETS	SHEET NO.
805	125BR-2	ST. CLAIR	17	9
CONTRACT NO. 76E99				
ILLINOIS FED. AID PROJECT				