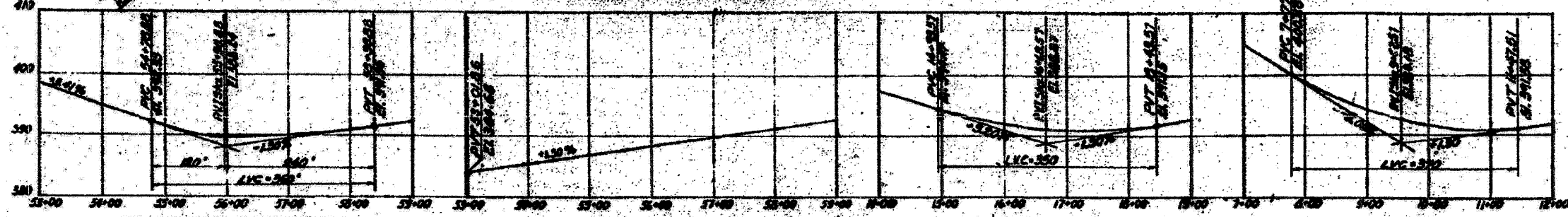
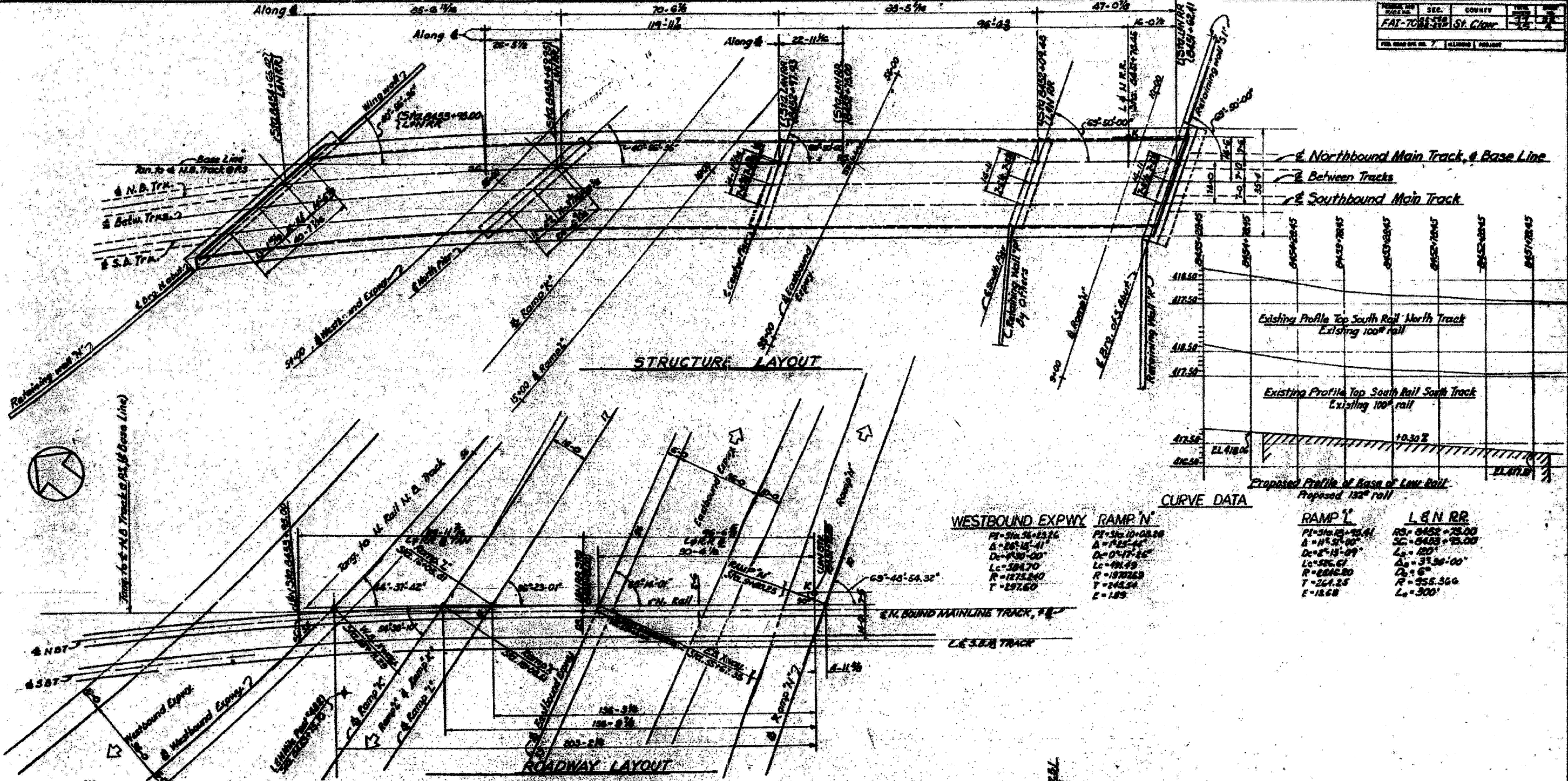


FOR INFORMATION ONLY

PROJECT NO.	SEC.	COUNTY	TOWNSHIP	RANGE
FAT-708-33	82-1DM	ST. CLAIR	35	12
FED. ROAD DIST. NO. 7 (ILLINOIS) FED. AID PROJECT				



Designed by: W.L.F.
 Drawn by: A.D.
 Checked by: P.K.

STATE OF ILLINOIS
 DEPARTMENT OF PUBLIC WORKS & BLDGS.
 DIVISION OF HIGHWAYS
 &
 CITY OF EAST ST. LOUIS
EAST ST. LOUIS EXPRESSWAY
 L&N R.R. OVER WEST BOUND EXPWAY,
 RAMP 1, EAST BOUND EXPWAY AND RAMP 2
 GENERAL GEOMETRIC LAYOUT
 H.W. LOCHNER, INC.
 ENGINEERS
 CHICAGO, ILLINOIS
 DATE: JULY 1960
 SHEET NO. 3

FILE NAME = DBTRI-76F29-SHT-LNRRB-ridge_02.dgn	USER NAME = searsb	DESIGNED OP	REVISED -	STATE OF ILLINOIS DEPARTMENT OF TRANSPORTATION	EXISTING BRIDGE PLAN - L&N RR BRIDGE 02	F.A.T. RTE.	SECTION	COUNTY	TOTAL SHEETS	SHEET NO.	
		DRAWN OP	REVISED -			55/70	82-1DM	ST. CLAIR	35	12	
		CHECKED DBM	REVISED -			SCALE: NONE	SHEET NO. 3 OF 26 SHEETS	STA.	TO STA.	FED. ROAD DIST. NO.	(ILLINOIS) FED. AID PROJECT
		DATE 11-23-11	REVISED -							CONTRACT NO. 76F29	