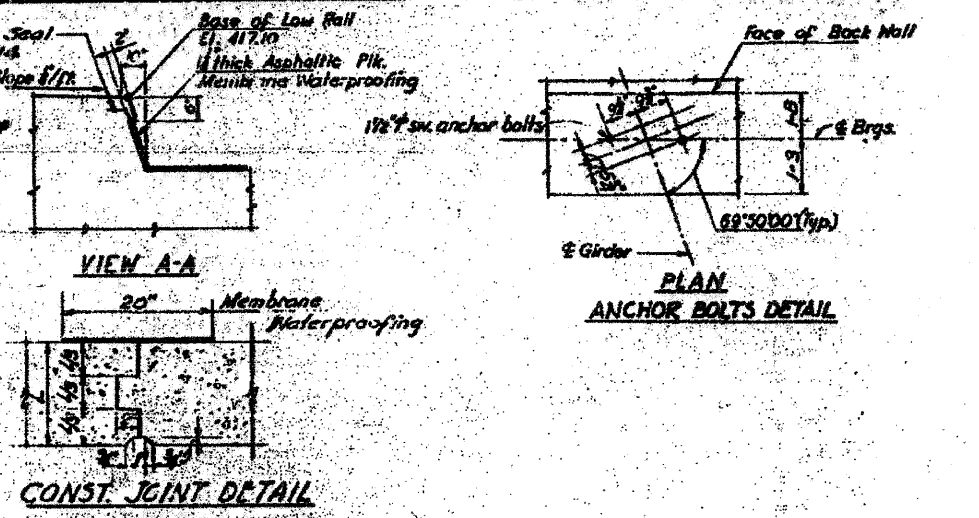
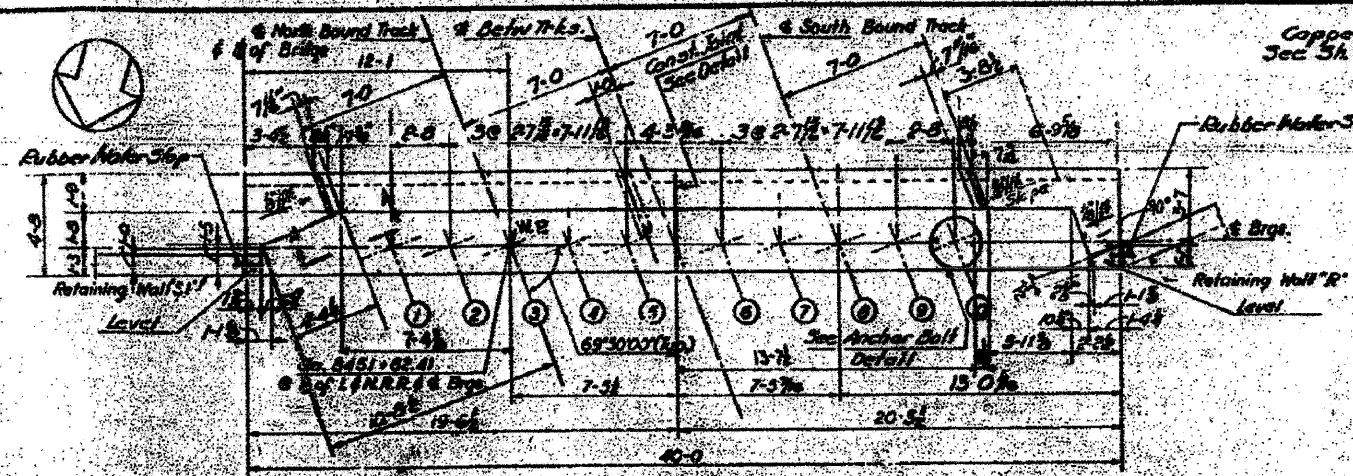
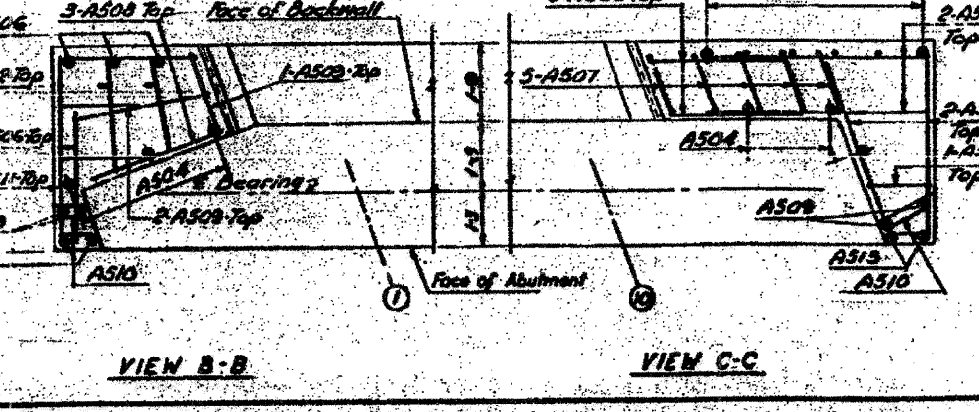
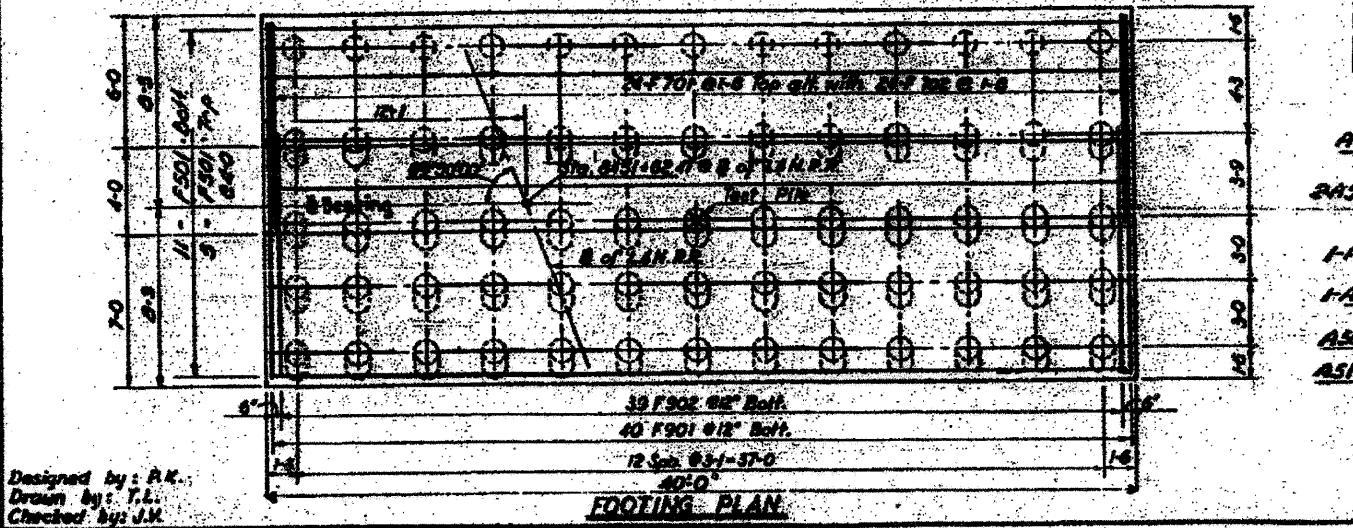
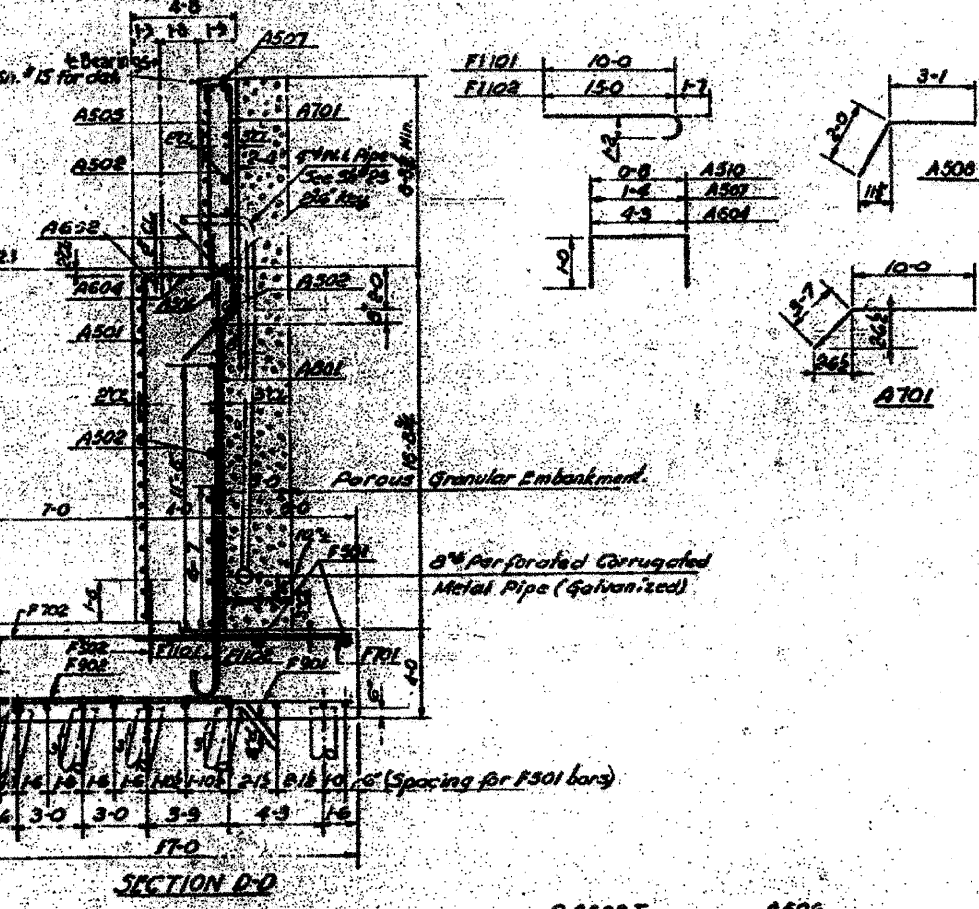
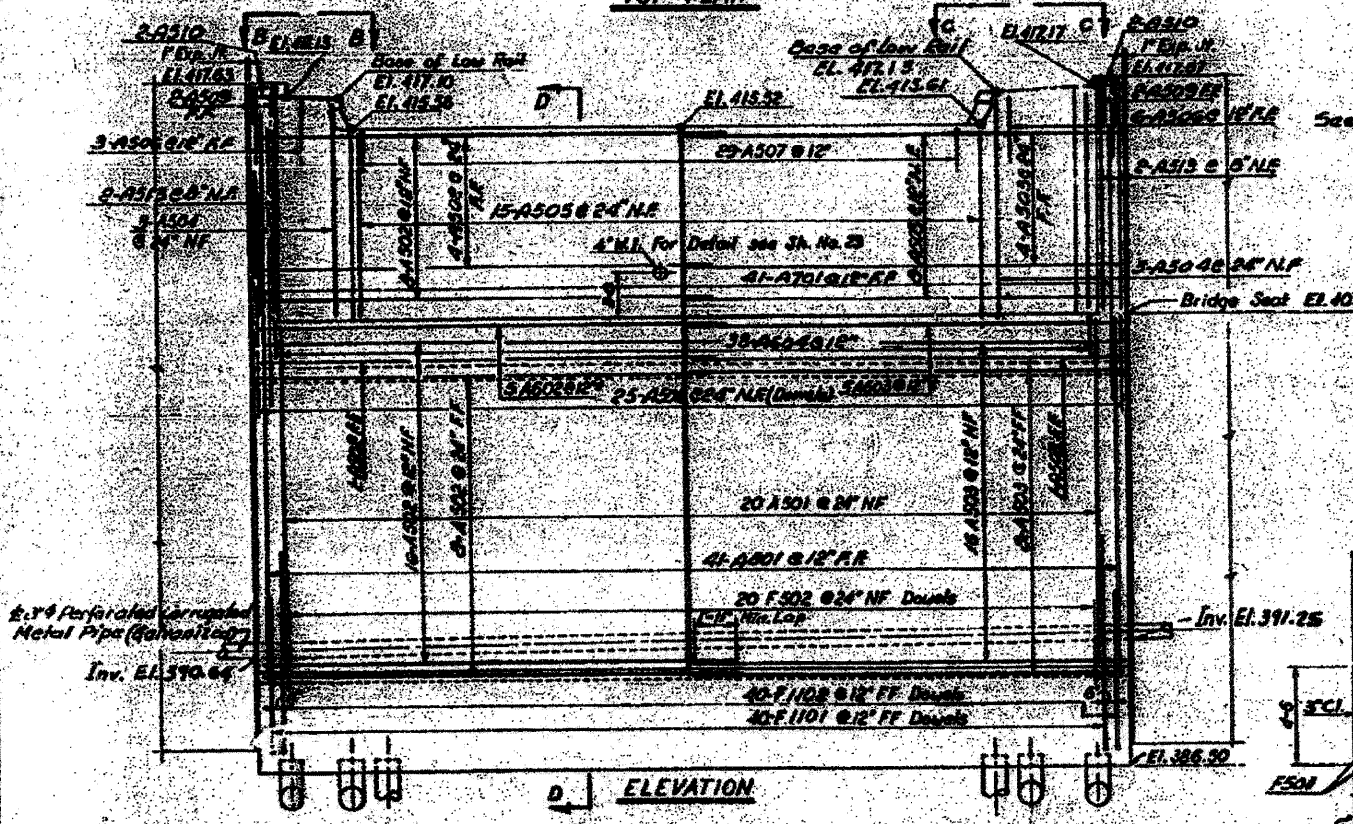


FOR INFORMATION ONLY

PROJECT NO.	SECTION	COUNTY	SHEET NO.	TOTAL SHEETS
FAI-706-112	82-IDM	ST. CLAIR	35	16
FED. ROAD DIST. NO. 7 ILLINOIS FED. AID PROJECT				



BAR SCHEDULE				
Mark	No. Req'd	Size	Length	Shape
F301	16	5	39-6	—
F302	20	5	3-0	—
F701	24	7	9-0	—
F901	40	9	18-6	—
F902	39	9	11-0	—
F1101	40	11	11-7	—
F1102	40	11	14-7	—
F702	26	7	16-6	—
A501	20	5	16-0	—
A502	37	5	21-8	—
A503	37	5	20-2	—
A504	6	5	9-8	—
A505	15	5	8-1	—
A506	35	5	3-0	—
A507	35	5	3-4	—
A508	5	5	3-1	—
A509	6	5	1-0	—
A510	4	5	2-8	—
A511	3	5	4-3	—
A512	2	5	2-8	—
A513	4	5	10-2	—
A514	2	5	5-0	—
A602	5	6	24-1	—
A603	5	6	20-2	—
A604	38	6	6-3	—
A701	41	7	13-7	—
A801	41	8	15-6	—



BILL OF MATERIAL	
Class "X" Concrete	C.Y. 234
Reinforced bars	Lbs. 17730
Furnishing Concrete Piles	Lb. Ft. 2457
Driving Concrete Piles	Lb. Ft. 855
Test Pile (Concrete)	1 Each
Porous Granular Embankment	CY 104
Membrane Water proofing	S.F. 41
6" CMP Perforated (Galv.)	L.F. 40
Incidental to cost of Class "X" Concrete	

PILE DATA	
Type	Concrete
Length	33.7 ft
Capacity	40 tons
No. Required	64 lbs.
Test Pile	1 lb.

Notes:  
 For pile details see Sh. #84.  
 Core shall be taken in placing reinforcement bars so as to clear anchor bolts.  
 For General Notes see Sh. #1.  
 For Location see Sh. #2.  
 See Sh. #7 for Expansion Joint Details at ends of abutments.

STATE OF ILLINOIS  
 DEPARTMENT OF PUBLIC WORKS & BLDGS.  
 DIVISION OF HIGHWAYS  
 &  
 CITY OF EAST ST. LOUIS  
**EAST ST. LOUIS EXPRESSWAY**  
 L. & N. R. R. OVER WEST BOUND EXPWAY,  
 RAMP "L", EAST SOUND EXPWAY AND RAMP "M"  
 SOUTH ABUTMENT  
 H. W. LOCHNER, INC.  
 ENGINEERS  
 CHICAGO, ILLINOIS  
 DATE JULY 1960 SHEET NO. 6

Designed by: A.K.  
 Drawn by: T.L.  
 Checked by: J.M.