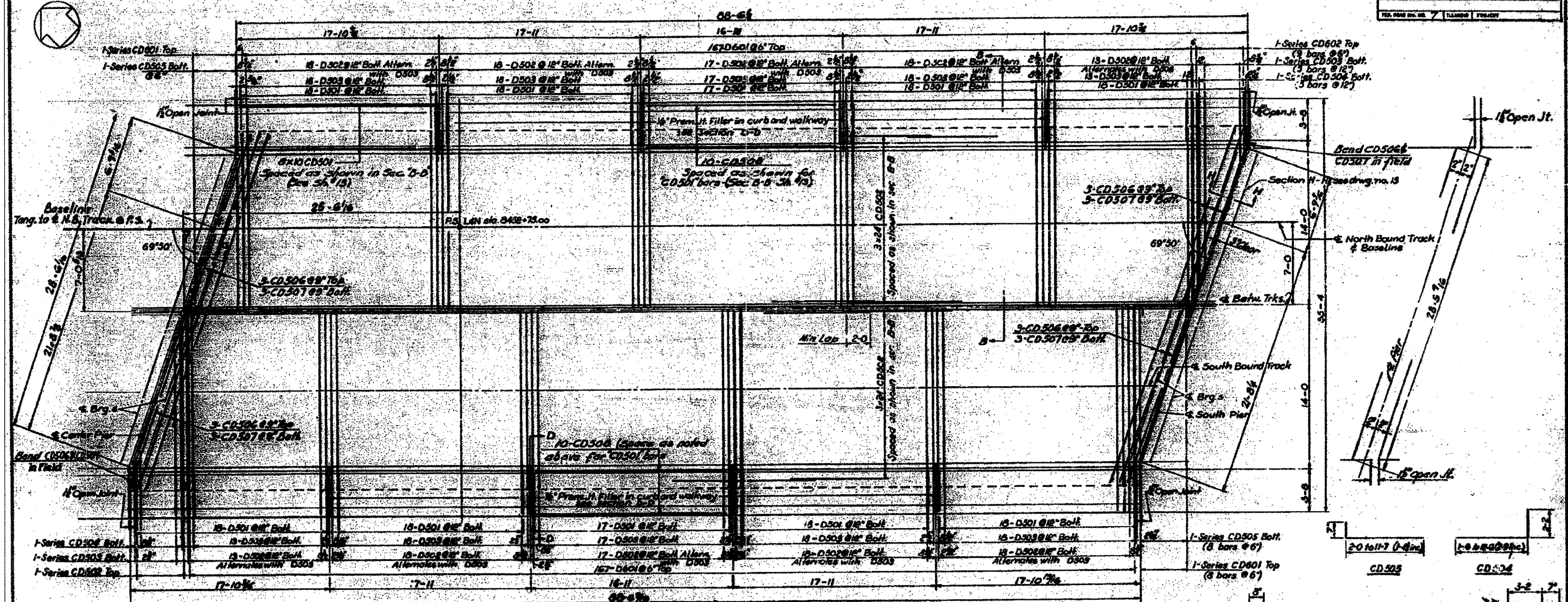
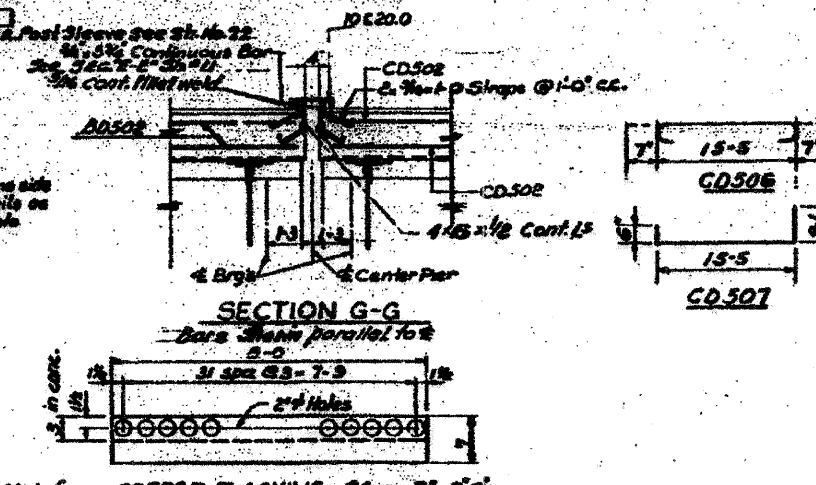
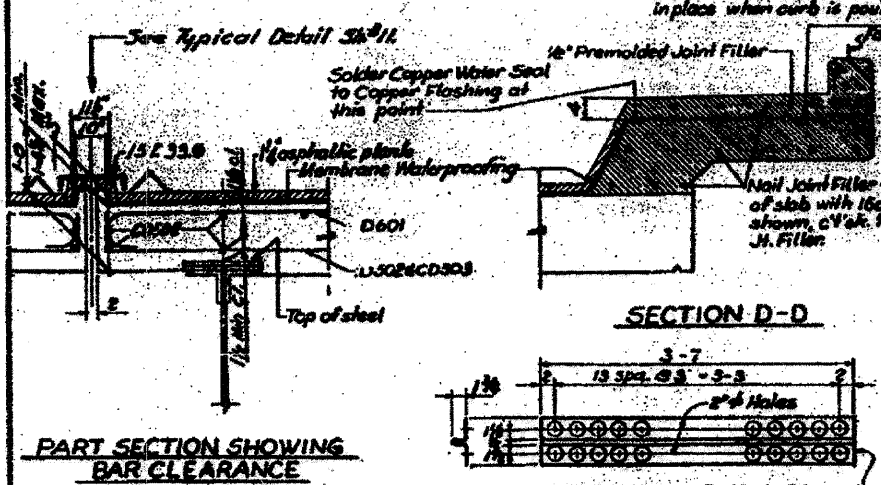


FED. ROAD DIST. NO.	ILLINOIS	FED. AID PROJECT
55-70	82-10M	ST. CLAIR
SECTION	COUNTY	TOTAL SHEETS
82-10M	ST. CLAIR	35
CONTRACT NO. 76F29		SHEET NO. 14



PLAN OF DECK 'C'

Mark	No. Req.	Size	Length	Shape
D501	178	#5	5-7	U
D502	168	#5	18-0	U
D503	148	#5	17-3	U
CD501	80	#5	17-7	U
CD502	144	#5	31-0	U
CD503	88	#5	17-7	U
CD504	88	#5	17-7	U
CD505	18	#5	18-0	U
CD506	18	#5	18-0	U
CD507	20	#5	18-7	U
CD508	20	#5	18-7	U
CD601	8 Series 8 bars @ 12"	#6	28-0	U
CD602	8 Series 9 bars @ 12"	#6	28-0	U
D601	334	#6	15-10	U



NOTES
 For handrail post spacing see Sht. # 28
 For Bill of Materials see Sht. # 12
 For Deck Drainage and EL Top Deck see Sht. # 23
 For Section B-B See Sht. # 13
 For General Notes see Sht. # 1

STATE OF ILLINOIS
 DEPARTMENT OF PUBLIC WORKS & BLDGS
 DIVISION OF HIGHWAYS
 &
 CITY OF EAST ST. LOUIS
EAST ST. LOUIS EXPRESSWAY

L. & N. R.R. OVER WEST BOUND EXPWAY, RAMP "L", EAST BOUND EXPWAY AND RAMP "N"
DECK 'C' AND DETAILS

H. W. LOCHNER, INC.
 ENGINEERS

DATE: JULY 1960 CHICAGO, ILLINOIS SHEET NO. 14