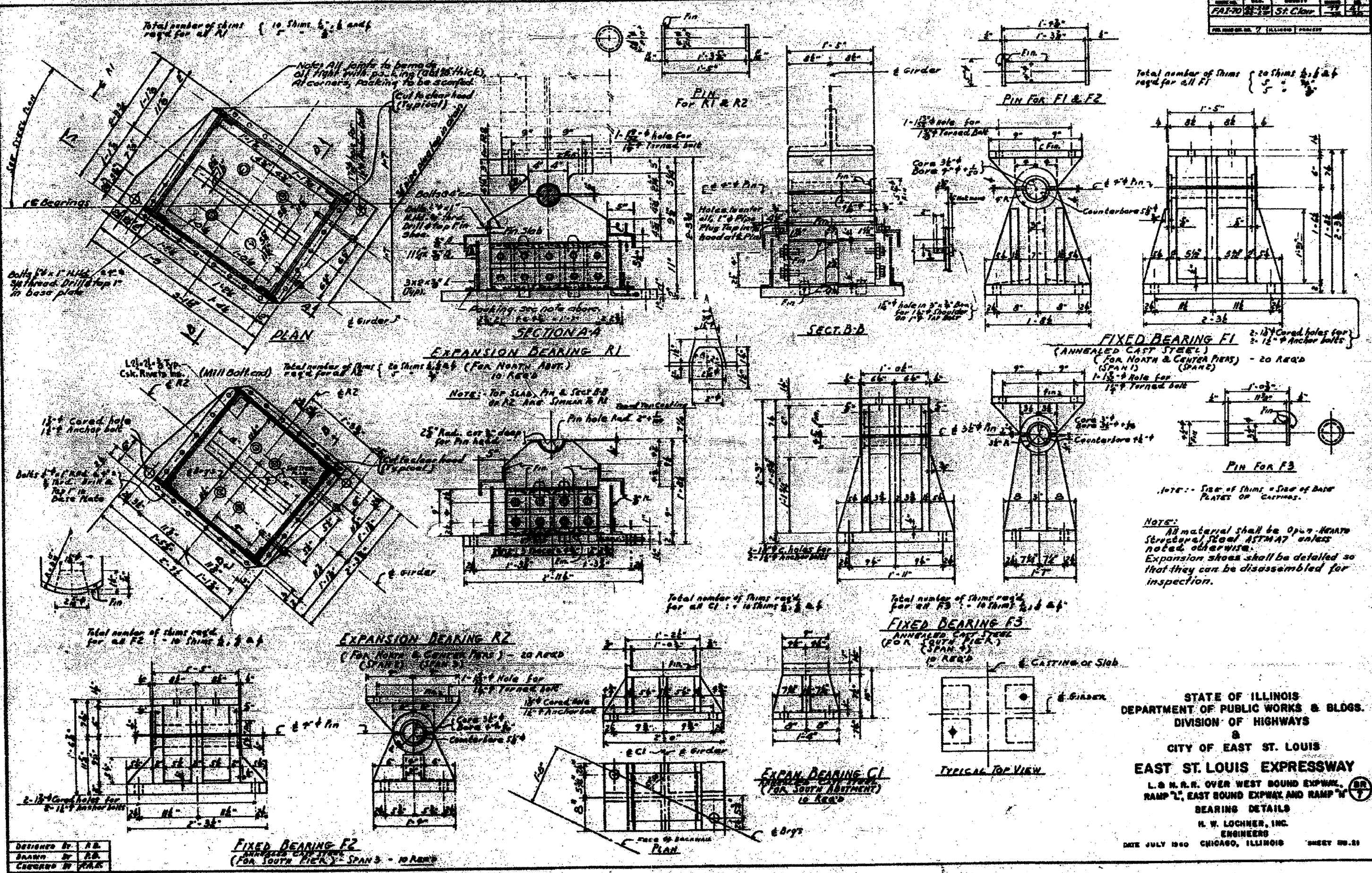


PROJECT NO.	SECTION	COUNTY	TOTAL SHEETS	SHEET NO.
FAI-70	82-10M	ST. CLAIR	35	32
FED. ROAD DIST. NO. [ILLINOIS] FED. AID PROJECT				



STATE OF ILLINOIS  
 DEPARTMENT OF PUBLIC WORKS & BLDGS.  
 DIVISION OF HIGHWAYS  
 &  
 CITY OF EAST ST. LOUIS  
**EAST ST. LOUIS EXPRESSWAY**  
 L & N R.R. OVER WEST SOUND EXPWAY,  
 RAMP "L", EAST SOUND EXPWAY AND RAMP "Y"  
 BEARINGS DETAILS  
 H. W. LOCHNER, INC.  
 ENGINEERS  
 DATE JULY 1960 CHICAGO, ILLINOIS SHEET NO. 31

DESIGNED BY: A.B.  
 DRAWN BY: A.B.  
 CHECKED BY: A.B.

FILE NAME = D8TRI-76F29-SHT-LNRRB-ridge.22.dgn  
 USER NAME = seorsb  
 PLOT SCALE = 1.0000 "/in.  
 PLOT DATE = 11/22/2011

DESIGNED OP  
 DRAWN OP  
 CHECKED DBM  
 DATE 11-23-11

REVISED -  
 REVISED -  
 REVISED -  
 REVISED -

STATE OF ILLINOIS  
 DEPARTMENT OF TRANSPORTATION

EXISTING BRIDGE PLAN - L&N RR BRIDGE 22  
 SCALE: NONE SHEET NO. 23 OF 26 SHEETS STA. TO STA.

F.A.I. RTE.	SECTION	COUNTY	TOTAL SHEETS	SHEET NO.
55/70	82-10M	ST. CLAIR	35	32
CONTRACT NO. 76F29				
FED. ROAD DIST. NO. [ILLINOIS] FED. AID PROJECT				