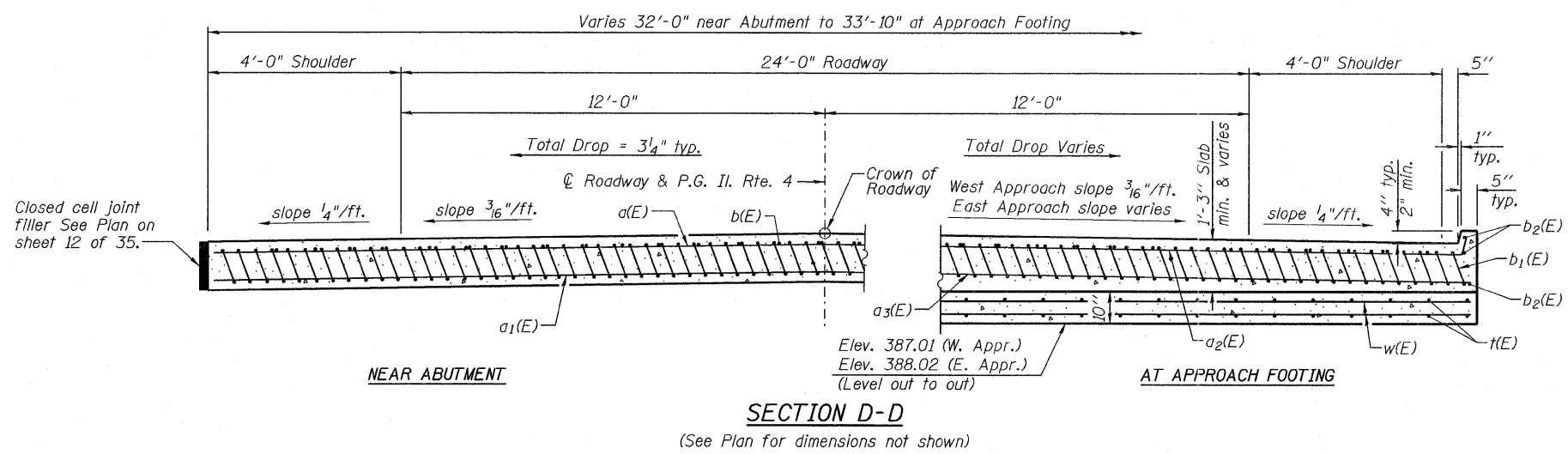
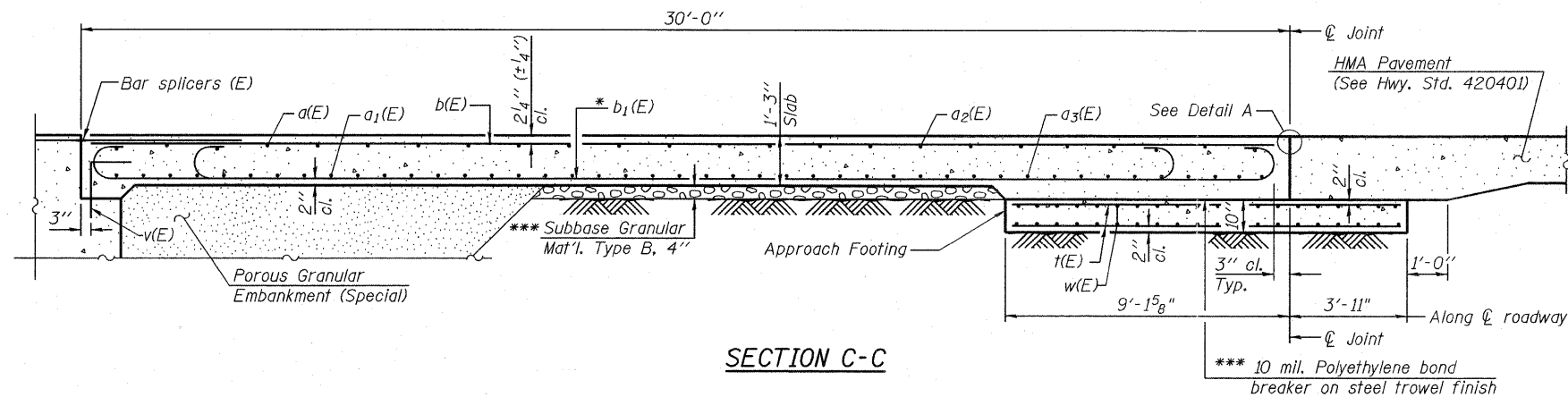
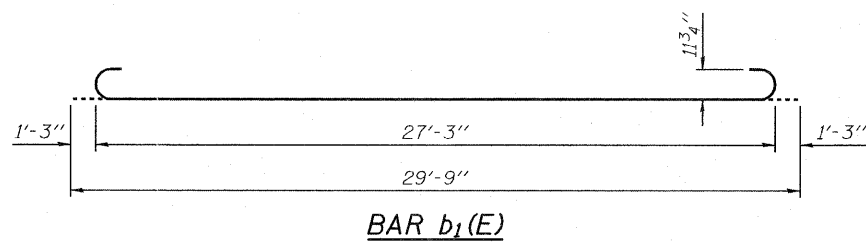
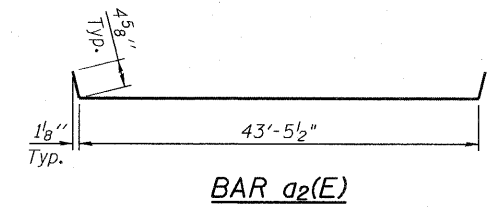
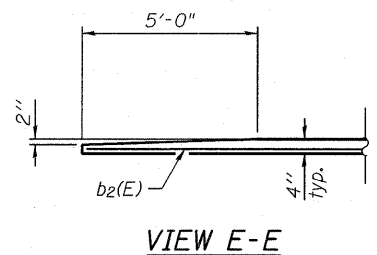


P:\C\26703\700ceadd\709stt\039-0074978049-Approach Slab Details 2.dgn
 19-OCT-2011
 15:47

Notes:
 See sheet 12 of 35 for Detail A.
 Approach Slab shall be paid for as Concrete Superstructure.
 Approach Footing concrete shall be paid for as Concrete Structures.
 Reinforcement shall be paid for as Reinforcement Bars, Epoxy Coated.
 For v(E) bar details, see sheet No. 22, 23, 24 and 25 of 35.
 The approach footing maximum applied service bearing pressure (Qmax) = 2.0 ksf.
 For bar splicer details, see sheet 29 of 35.
 Cost of excavation for approach footing included with Concrete Structures.
 For Porous Granular Embankment (Special) and drainage treatment details, see sheet 3 of 35.



* Tilt #9 b₁(E) bars as required to maintain clearance.
 *** Cost included with Concrete Superstructure.



**TWO APPROACHES
BILL OF MATERIAL**

Bar	No.	Size	Length	Shape
a(E)	20	#4	41'-4"	—
a ₁ (E)	34	#5	41'-4"	—
a ₂ (E)	30	#4	44'-3"	—
a ₃ (E)	58	#5	43'-7"	—
b(E)	52	#4	29'-8"	—
b ₁ (E)	162	#9	29'-9"	—
b ₂ (E)	12	#4	16'-3"	—
t(E)	140	#4	12'-7"	—
w(E)	80	#5	43'-8"	—
Concrete Superstructure			Cu. Yd.	100.0
Concrete Structures			Cu. Yd.	27.3
Reinforcement Bars, Epoxy Coated			Pound	27,100



USER NAME =	DESIGNED -	REVISED -
PLOT DATE = 19-OCT-2011	CHECKED -	REVISED -
	DRAWN - E. KRACK	REVISED -
	CHECKED - B. ERSCHEN	REVISED -

**STATE OF ILLINOIS
DEPARTMENT OF TRANSPORTATION**

**BRIDGE APPROACH SLAB DETAILS
STRUCTURE NO. 039-0074**

F.A.P. RTE. 686	SECTION 114B-1	COUNTY JACKSON	TOTAL SHEETS 92	SHEET NO. 114
			CONTRACT NO. 78049	

SHEET NO. 13 OF 35 SHEETS

ILLINOIS FED. AID PROJECT