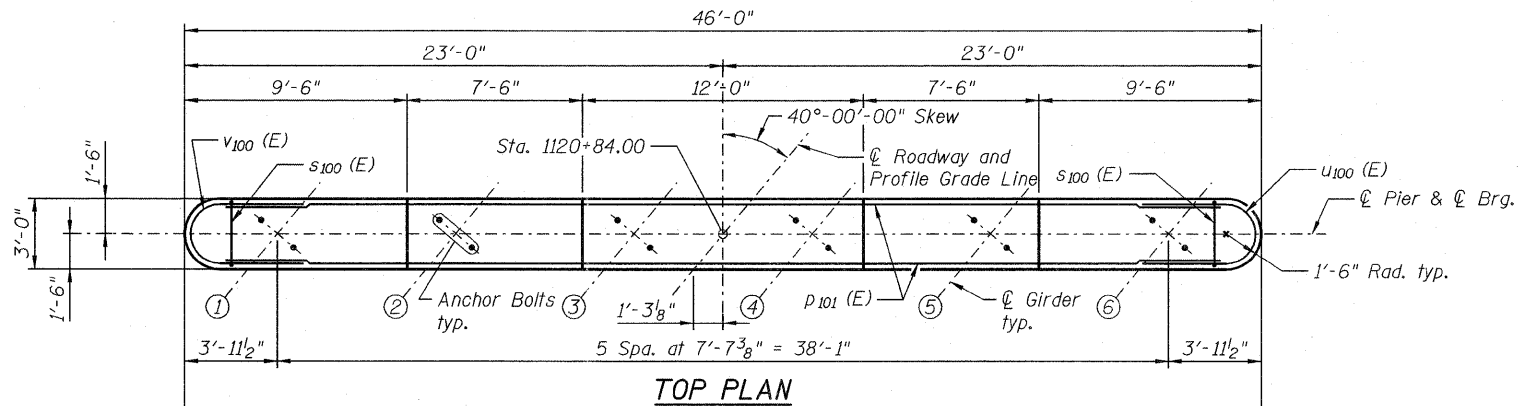
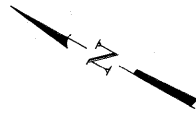
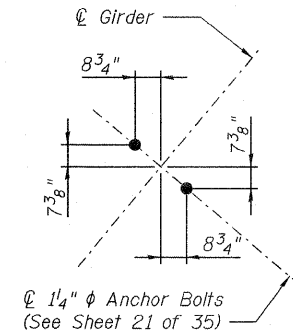


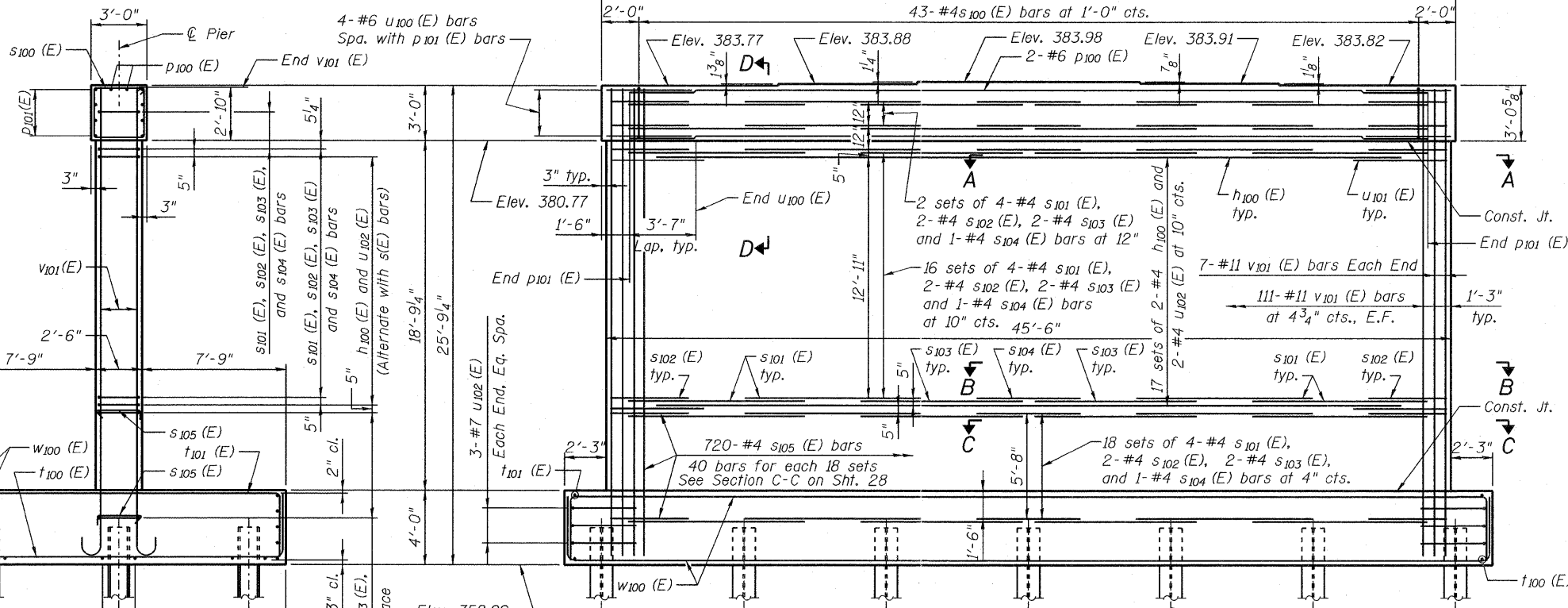
P:\C\26703\700cadd\T09str\_039-0074978049-Pier2.dgn  
19-OCT-2011 15:47



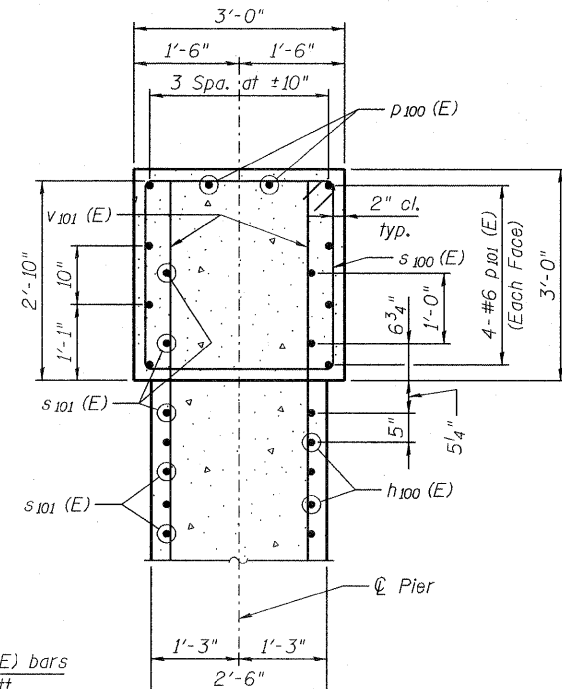
TOP PLAN



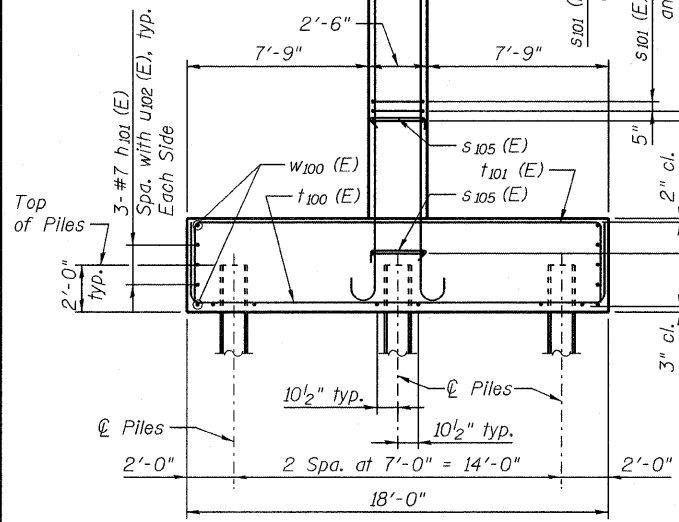
ANCHOR BOLT LAYOUT



ELEVATION  
(Looking Ahead Station)



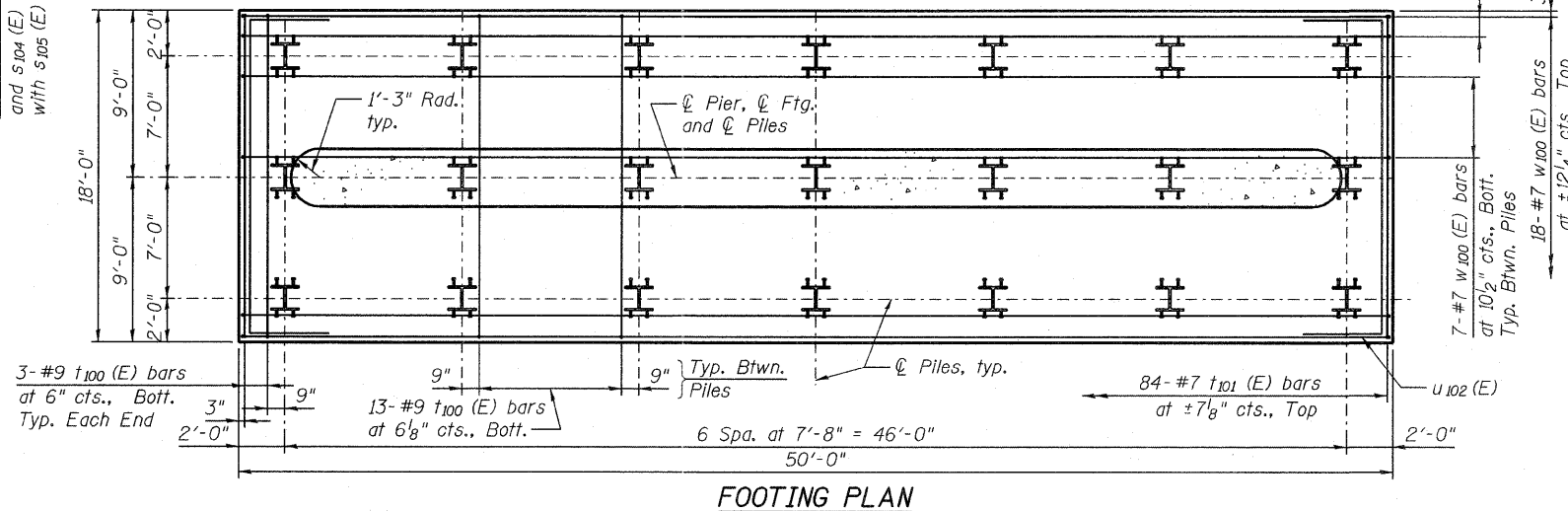
SECTION D-D



END VIEW

**PILE DATA**

Type: Steel HP14x73  
Nominal Required Bearing: 500 kips  
Factored Resistance Available: 275 kips  
Est. Length: 45 ft  
No. Production Piles: 20  
No. Test Piles: 1



FOOTING PLAN

**NOTES**

All edges shall have 3/4 inch chamfer.  
Pour steps monolithically with cap.  
Place reinforcement in cap to miss anchor bolts.  
For details of bearings, see Sheet 21 of 35.  
For details of piles, see Sheet 30 of 35.

**JACOBS**

USER NAME =  
PLOT DATE = 19-OCT-2011

DESIGNED - B. ERSCHEN  
CHECKED - N. KHATRI  
DRAWN - C. SALLADE  
CHECKED - J. SMITH

REVISED -  
REVISED -  
REVISED -  
REVISED -

STATE OF ILLINOIS  
DEPARTMENT OF TRANSPORTATION

PIER 2 PLAN AND ELEVATION  
STRUCTURE NO. 039-0074

SHEET NO. 27 OF 35 SHEETS

F.A.P. RTE.	SECTION	COUNTY	TOTAL SHEETS	SHEET NO.
686	114B-1	JACKSON	106	114
CONTRACT NO. 78049				

ILLINOIS FED. AID PROJECT

FILE NAME=039-0074978049-Pier2.dgn