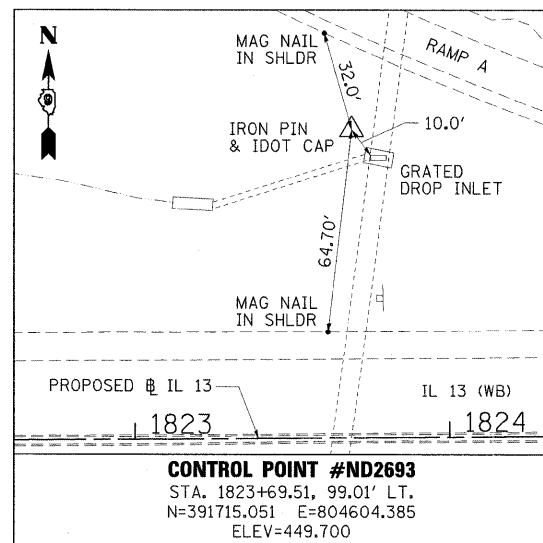
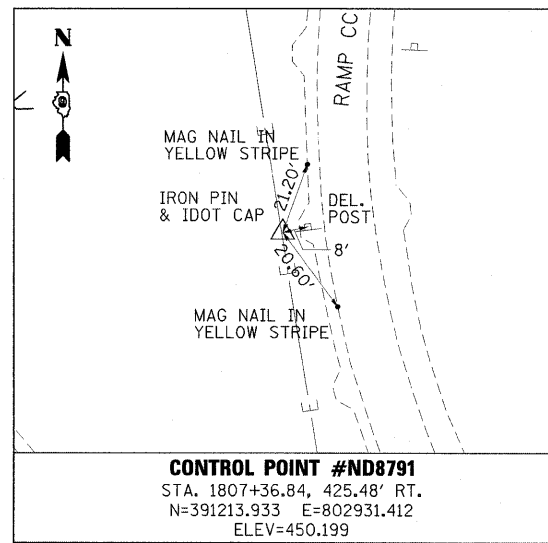
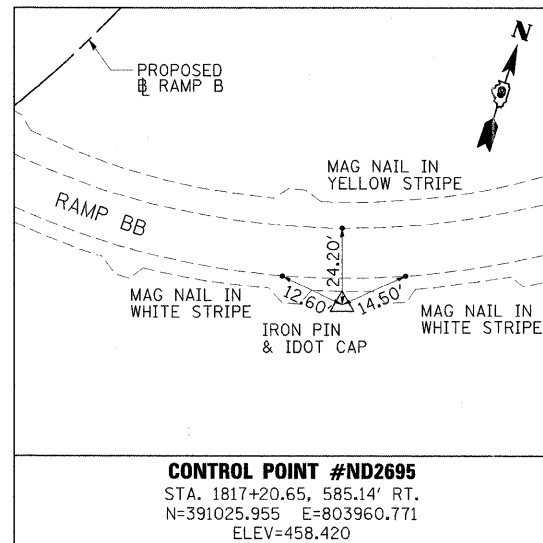
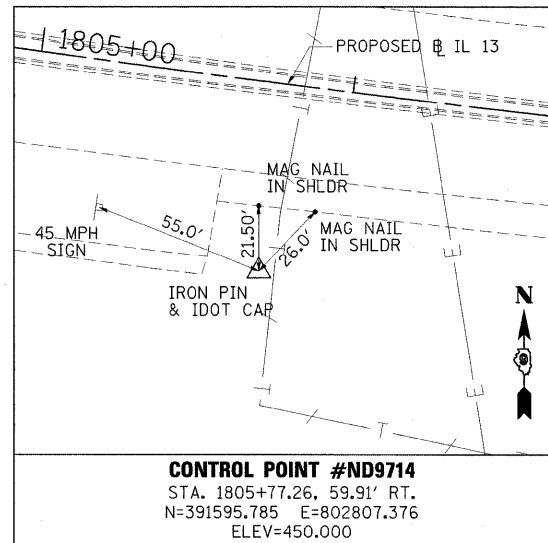


**IL 13 BENCHMARK LOCATIONS**

BM "BM20"	STA. 1792+87.53 ±, 66.40' @ RT. F.A.P. 331 CUT SQUARE IN BASE OF LIGHT POLE, LOCATED IN SE ISLAND, AT THE INTERSECTION OF HALFWAY ROAD AND NEW 13, 40.0' RIGHT OF THE NEW 13 EBL @ STA. 792+89. ELEVATION = 452.427
BM "BM21"	STA. 1815+91.31 ±, 95.38' ± RT. F.A.P. 331 CUT SQUARE IN BASE OF LIGHT POLE (*11), LOCATED IN SE CLOVERLEAF INFIELD, AT THE I-57 AND NEW 13 INTERCHANGE, 81.0' RIGHT OF THE NEW 13 EBL @ STA. 815+83. ELEVATION = 443.786
BM "BM22"	STA. 841+92.46 ±, 60.66' ± RT. F.A.P. 331 CUT SQUARE IN BASE OF TRAFFIC SIGNAL HANDHOLE, LOCATED IN SW QUAD OF THE INTERSECTION OF CARBON STREET AND NEW 13, 45.0' RIGHT OF THE NEW 13 EBL @ STA. 841+95. ELEVATION = 460.139



- NOTES:**
- HORIZONTAL CONTROL BASED ON THE ILLINOIS STATE PLANE COORDINATES NAD 83 (1997 ADJUSTMENT) EAST ZONE.
  - VERTICAL CONTROL BASED ON NAVD (1988).
  - HORIZONTAL AND VERTICAL CONTROL FOR THIS PROJECT BASED ON DIFFERENT DATUM THAN RECENTLY COMPLETED/ONGOING PROJECTS. CONTRACTOR SHALL ONLY USE CONTROL POINTS LISTED HEREIN FOR LAYOUT ON THIS CONTRACT AND VERIFY ACCURACY OF CONTROL LOCATED WITHIN ADJACENT PROJECTS PRIOR TO LAYOUT.
  - CONTROL FOR HILLVIEW WAY SHEETS 123-135 SHALL BE BASED ON STAKEOUT COORDINATES LISED ON SHEET 129

FILE NAME = ...ND978182-sh1-ATB_009_Ties.dgn	USER NAME = Rob Heady	DESIGNED - MJO	REVISED -	<b>STATE OF ILLINOIS DEPARTMENT OF TRANSPORTATION</b>	<b>ALIGNMENT TIES AND BENCHMARKS IL ROUTE 13</b>			F.A. RTE.	SECTION	COUNTY	TOTAL SHEETS	SHEET NO.
	PLOT SCALE = 30.0000' / IN.	DRAWN - RAH	REVISED -		SCALE:	SHEET NO. OF SHEETS	STA. TO STA.	* 01-6-2HBK-2, HB-1,2; 01-1R-1	WILLIAMSON	968	93	
	PLOT DATE = 10/7/2011	CHECKED - BJD	REVISED -					* F.A.I. 57 AND F.A.P. 331			CONTRACT NO. 78182	
		DATE - 10/07/11	REVISED -						ILLINOIS FED. AID PROJECT			