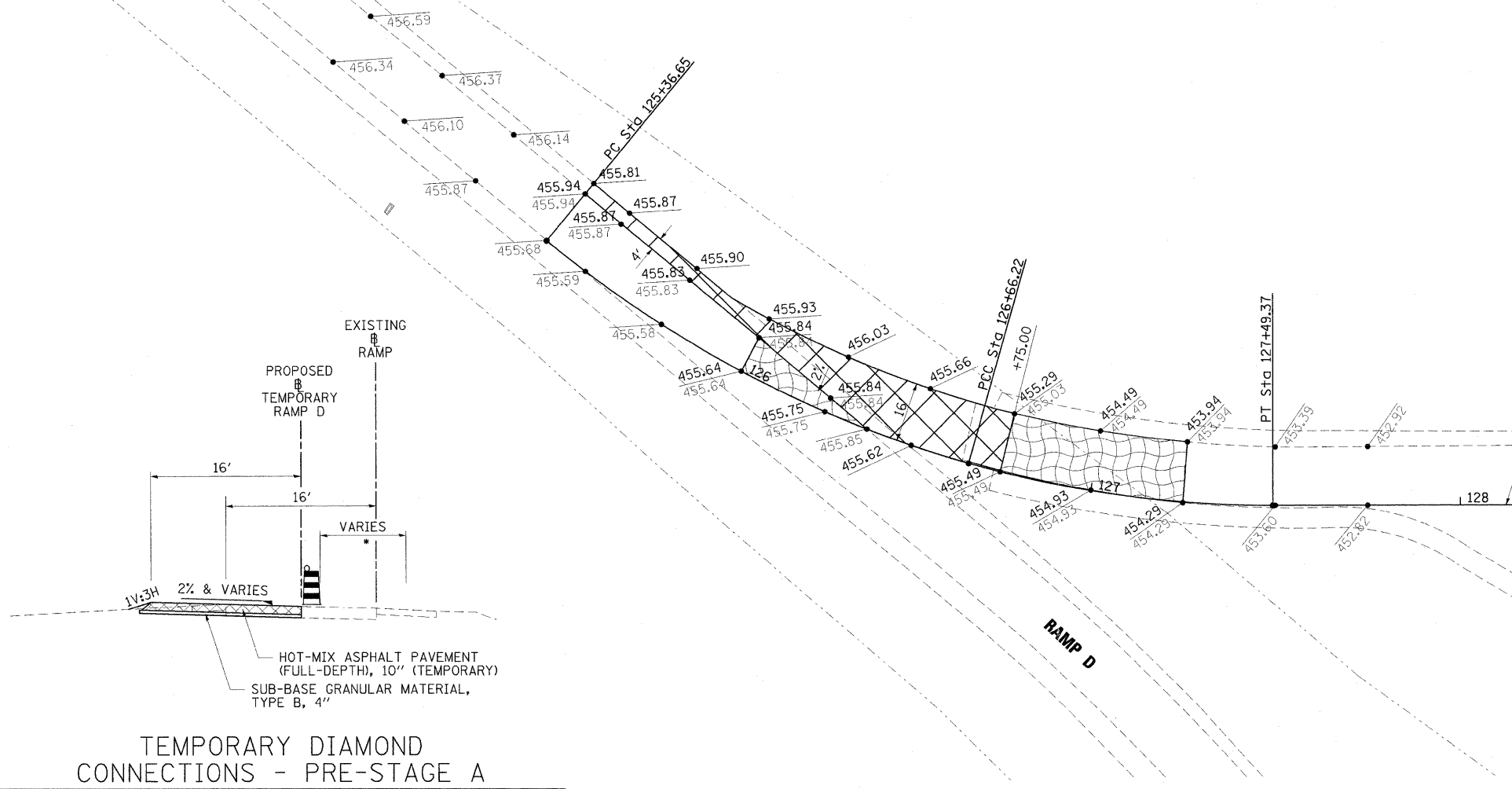


PROPOSED IL 13

Sta 1804+47.05 (IL 13) =  
Sta 129+71.25 (TEMP. DIAMOND D)

PROPOSED TEMP. DIAMOND D

SEE IL 13 PRE-STAGE A SHEETS FOR STAGING



**TEMPORARY DIAMOND CONNECTIONS - PRE-STAGE A**

TEMP. RAMP D: STA. 125+36.65 TO STA. 126+75.00

- MAINTAIN TRAFFIC ON EXISTING RAMP SHOULDER/LANE DURING TEMPORARY CONNECTIONS

**TEMP. DIAMOND D CURVES**

PROP. CURVE DIAD1	EXIST. CURVE DIAD2
PI STA. = 126+02.39	PI STA. = 127+08.06
$\Delta = 23^\circ 47' 23''$ (LT)	$\Delta = 15^\circ 52' 49''$ (LT)
D = 18° 21' 39"	D = 19° 05' 55"
R = 312.05'	R = 300.00'
T = 65.73'	T = 41.84'
L = 129.57'	L = 83.15'
E = 6.85'	E = 2.90'
e = N/C	e = N/C
T.R. = N/A	T.R. = N/A
S.E. RUN = N/A	S.E. RUN = N/A
P.C. STA. = 125+36.65	P.C. STA. = 126+66.22
P.T. STA. = 126+66.22	P.T. STA. = 127+49.37

**TEMP. DIAMOND D COORDINATE DATA**

P.C. STA. 125+36.65	N: 392075.650	E: 802818.192
P.C.C. STA. 126+66.22	N: 391971.930	E: 802742.100
P.T. STA. 127+49.37	N: 391892.431	E: 802718.657
P.O.T. STA. 129+71.25	N: 391672.983	E: 802685.900

**NOTES:**

- CONTRACTOR TO VERIFY HORIZONTAL AND VERTICAL LOCATION OF TEMPORARY DIAMOND STUBS TO DETERMINE IF FIELD ADJUSTMENTS TO CURVES OR ELEVATIONS ARE REQUIRED. CONTRACTOR SHALL RECEIVE APPROVAL FROM RESIDENT ENGINEER PRIOR TO CONSTRUCTING TEMPORARY DIAMOND CONNECTORS.

**LEGEND**

- WORK ZONE
- COMPLETED PAVEMENT
- TEMPORARY PAVEMENT - FULL DEPTH (CONSTRUCTED THIS STAGE)
- TEMPORARY PAVEMENT - FULL DEPTH (CONSTRUCTED PREVIOUS STAGE)
- TEMPORARY RAMP
- MILL/OVERLAY
- TEMPORARY CONCRETE BARRIER WALL
- IMPACT ATTENUATORS, TEMPORARY (FULLY REDIRECTIVE, NARROW)
- IMPACT ATTENUATORS, TEMPORARY (NON-REDIRECTIVE)
- DRUM WITH STEADY BURNING LIGHT
- TYPE II BARRICADE WITH STEADY BURNING LIGHT
- TYPE III BARRICADE WITH FLASHING LIGHTS
- DIRECTION OF TRAFFIC FLOW

FILE NAME =	USER NAME = Brad Downen	DESIGNED - JMS	REVISED -
...\\D978182-sht-stagingPreA-DIAMOND.PLAN.dwg		DRAWN - JMS	REVISED -
PLOT SCALE = 20.0000' / IN.		CHECKED - BJD	REVISED -
PLOT DATE = 10/12/2011		DATE - 10/07/11	REVISED -

**STATE OF ILLINOIS  
DEPARTMENT OF TRANSPORTATION**

<b>MAINTENANCE OF TRAFFIC PLAN - TEMP. DIAMOND D PRE-STAGE A</b>			
SCALE:	SHEET NO. OF SHEETS	STA. TO STA.	

F.A. RTE.	SECTION	COUNTY	TOTAL SHEETS	SHEET NO.
* (X1-6-2)HBK-2, HB-1,2; (X-1)R-1		WILLIAMSON	968	156
* F.A.I. 57 AND F.A.P. 331		CONTRACT NO. 78182		
ILLINOIS FED. AID PROJECT				