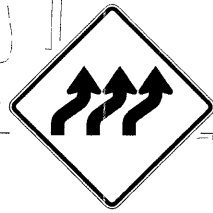


EXIT 54B	EXIT 54A
Morgan Avenue	ILLINOIS 13
1/4 MILE	Carbondale Harrisburg
EXIT ONLY	

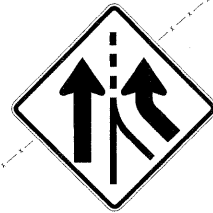
COVER "EXIT ONLY"
INSTALL PERMANENT SIGNS
STA. 1510+00

RIGHT LANE MUST EXIT

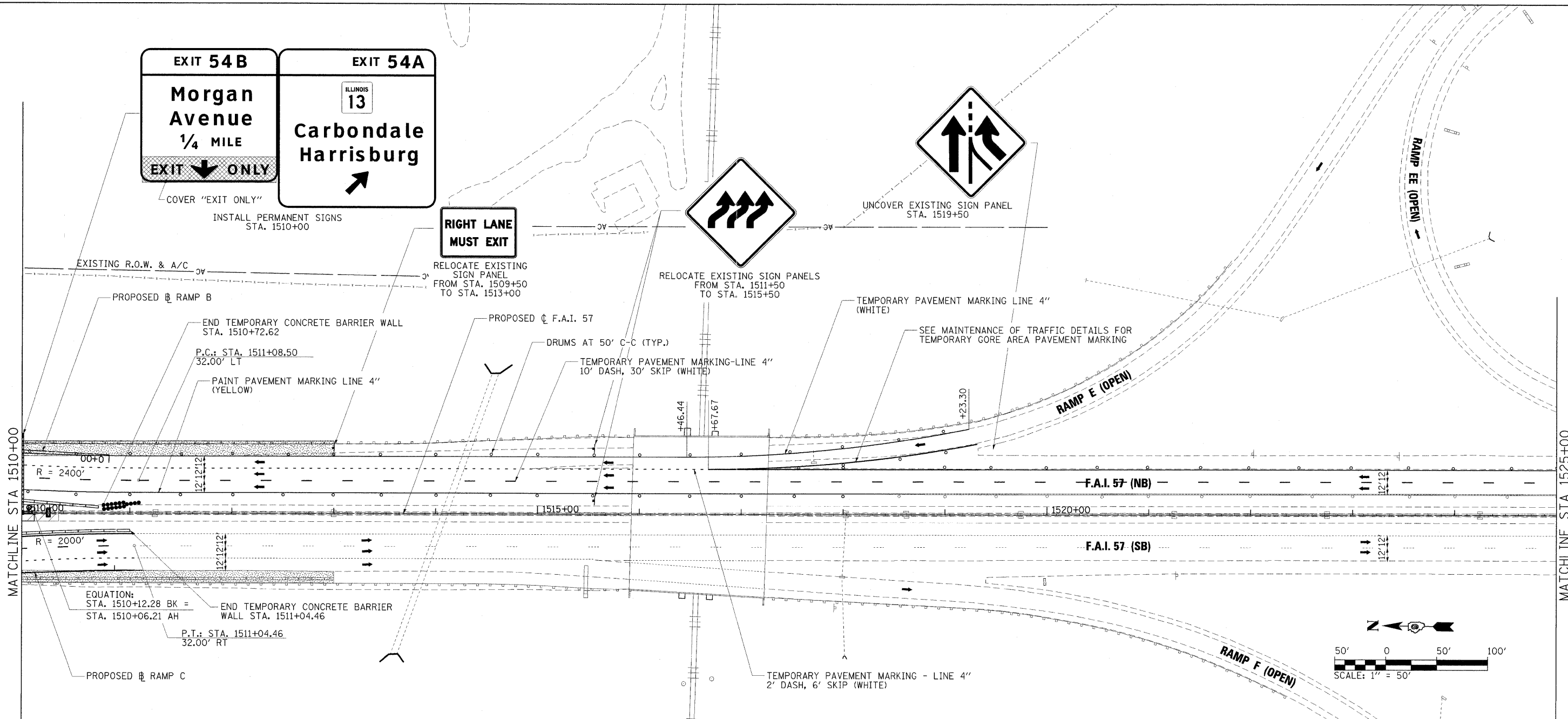
RELOCATE EXISTING SIGN PANEL
FROM STA. 1509+50
TO STA. 1513+00



RELOCATE EXISTING SIGN PANELS
FROM STA. 1511+50
TO STA. 1515+50

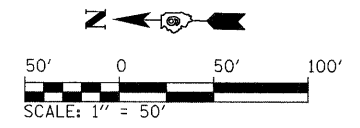


UNCOVER EXISTING SIGN PANEL
STA. 1519+50



MATCHLINE STA 1510+00

MATCHLINE STA 1525+00



LEGEND	
	WORK ZONE
	COMPLETED PAVEMENT
	TEMPORARY PAVEMENT - FULL DEPTH (CONSTRUCTED THIS STAGE)
	TEMPORARY PAVEMENT - FULL DEPTH (CONSTRUCTED PREVIOUS STAGE)
	TEMPORARY RAMP
	MILL/OVERLAY
	TEMPORARY CONCRETE BARRIER WALL
	IMPACT ATTENUATORS, TEMPORARY (FULLY REDIRECTIVE, NARROW)
	IMPACT ATTENUATORS, TEMPORARY (NON-REDIRECTIVE)
	DRUM WITH STEADY BURNING LIGHT
	TYPE II BARRICADE WITH STEADY BURNING LIGHT
	TYPE III BARRICADE WITH FLASHING LIGHTS
	DIRECTION OF TRAFFIC FLOW

FILE NAME =	USER NAME = Brad Downen	DESIGNED - RMM/EMM	REVISED -
...ND978182-shr-staging2-157_007.dgn		DRAWN - RJE	REVISED -
	PLOT SCALE = 50.0000' / IN.	CHECKED - BJD	REVISED -
	PLOT DATE = 10/12/2011	DATE - 10/07/11	REVISED -

STATE OF ILLINOIS
DEPARTMENT OF TRANSPORTATION

MAINTENANCE OF TRAFFIC PLAN - F.A.I. 57
STAGE 2

SCALE: 1" = 50' SHEET NO. OF SHEETS STA. 1510+00 TO STA.

F.A. RTE.	SECTION	COUNTY	TOTAL SHEETS	SHEET NO.
*	0X1-6-2HBK-2, HB-1,2; 0X-1JR-1	WILLIAMSON	968	239
*	F.A.I. 57 AND F.A.P. 331			CONTRACT NO. 78182

ILLINOIS FED. AID PROJECT