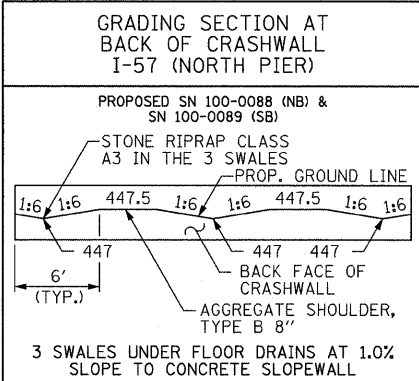


RAMP J PROPOSED SN 100-0098 SLOPE TRANSITIONS TO CLEAR ZONE	
SW CORNER	SE CORNER
STA. 8+55 RT = 1:3	STA. 10+75 RT = 1:3
STA. 8+05 RT = 1:3.5	STA. 11+25 RT = 1:3.5
STA. 7+55 RT = 1:4	STA. 11+75 RT = 1:4
NW CORNER	NE CORNER
STA. 8+90 LT = 1:3	STA. 11+10 LT = 1:3
STA. 8+40 LT = 1:3.5	STA. 11+60 LT = 1:3.5
STA. 7+90 LT = 1:4	STA. 12+10 LT = 1:4

I-57 PROPOSED SN 100-0088 (NB) SLOPE TRANSITIONS TO CLEAR ZONE	
NE CORNER (RAMP J STATIONING)	
STA. 3+75 RT = 1:3	
STA. 4+25 RT = 1:3.5	
STA. 4+75 RT = 1:4	



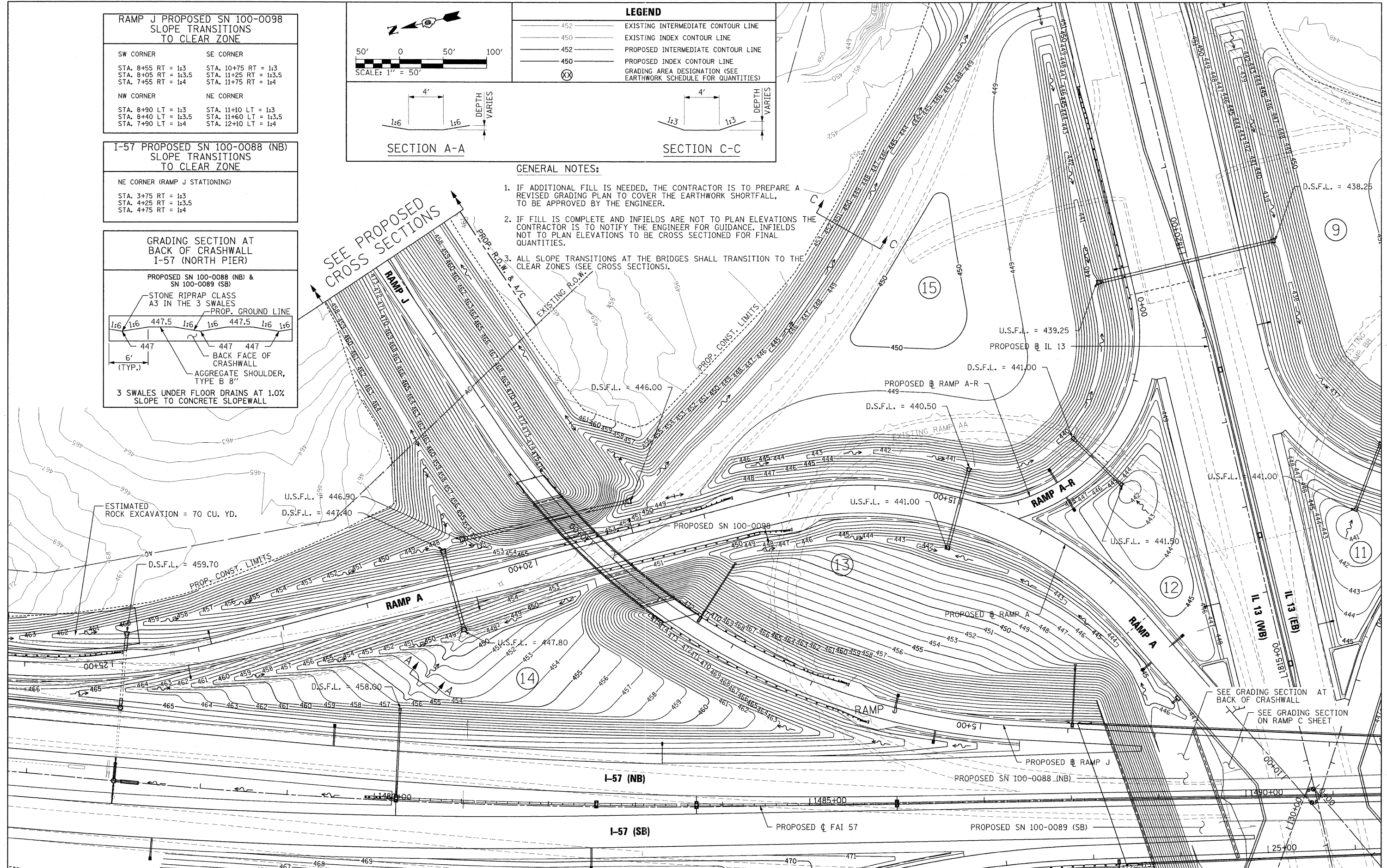
LEGEND

- EXISTING INTERMEDIATE CONTOUR LINE
- EXISTING INDEX CONTOUR LINE
- PROPOSED INTERMEDIATE CONTOUR LINE
- PROPOSED INDEX CONTOUR LINE
- GRADING AREA DESIGNATION (SEE EARTHWORK SCHEDULE FOR QUANTITIES)

SECTION A-A

SECTION C-C

- GENERAL NOTES:**
- IF ADDITIONAL FILL IS NEEDED, THE CONTRACTOR IS TO PREPARE A REVISED GRADING PLAN TO COVER THE EARTHWORK SHORTFALL, TO BE APPROVED BY THE ENGINEER.
 - IF FILL IS COMPLETE AND INFIELDS ARE NOT TO PLAN ELEVATIONS THE CONTRACTOR IS TO NOTIFY THE ENGINEER FOR GUIDANCE. INFIELDS NOT TO PLAN ELEVATIONS TO BE CROSS SECTIONED FOR FINAL QUANTITIES.
 - ALL SLOPE TRANSITIONS AT THE BRIDGES SHALL TRANSITION TO THE CLEAR ZONES (SEE CROSS SECTIONS).



FILE NAME = ... \D978182-sht-grading-RAMPA.dgn	USER NAME = Rob Heedy	DESIGNED - JRK	REVISED -	<p>STATE OF ILLINOIS DEPARTMENT OF TRANSPORTATION</p>	<p>INTERCHANGE GRADING PLAN RAMP A AND J</p>	F.A. RTE.	SECTION	COUNTY	TOTAL SHEETS	SHEET NO.	
PLOT SCALE = 50,0000' / IN.	DRAWN - JRK	CHECKED - BJD	REVISED -		SCALE: 1" = 50'	SHEET NO. OF SHEETS	STA. TO STA.	* (X1-6-2)HBK-2, HB-1,2; (IX-1R-1)	WILLIAMSON	968	331
PLOT DATE = 10/7/2011	DATE - 10/07/11	REVISED -	REVISED -		SHEET NO. OF SHEETS	STA. TO STA.	* F.A.I. 57 AND F.A.P. 331	ILLINOIS	CONTRACT NO. 78182		
ILLINOIS FED. AID PROJECT											