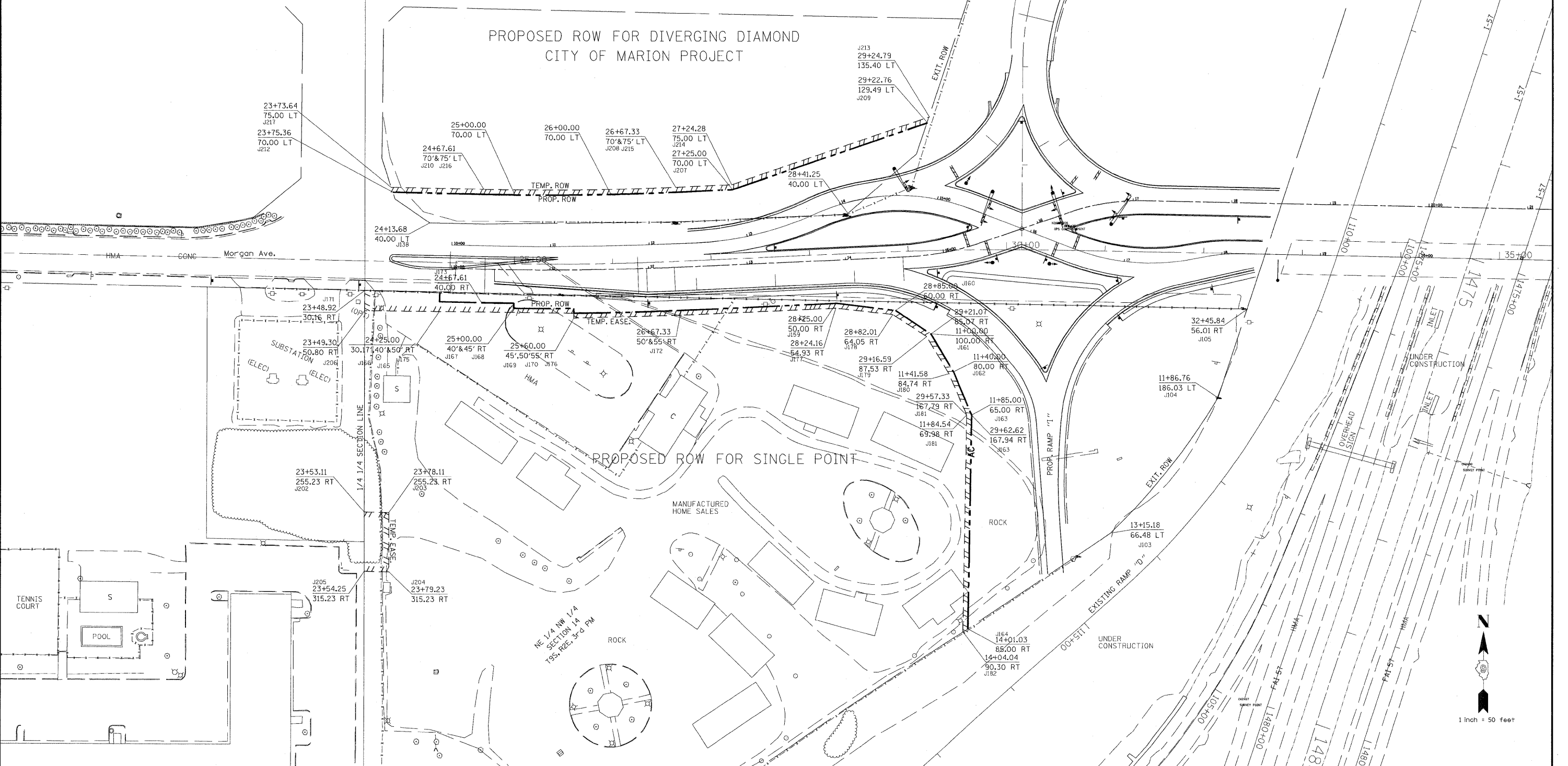


POINT COORDINATES

Pt J103	N 392859.2033	E 803617.3665	Pt J169	N 393086.8895	E 803072.5477
Pt J104	N 392996.3278	E 803726.8225	Pt J170	N 393081.8898	E 803072.6022
Pt J105	N 393086.8453	E 803756.4304	Pt J171	N 393097.4269	E 802860.4049
Pt J138	N 393173.3659	E 802926.5474	Pt J172	N 393085.0314	E 803181.6652
Pt J159	N 393092.3898	E 803339.1681	Pt J175	N 393083.1586	E 802936.0755
Pt J160	N 393085.0610	E 803399.0439	Pt J176	N 393076.8901	E 803072.6568
Pt J161	N 393061.1204	E 803435.0258	Pt J177	N 393097.4269	E 803338.6507
Pt J162	N 393022.7545	E 803489.0094	Pt J178	N 393080.8982	E 803398.2742
Pt J163	N 392979.0235	E 803476.3792	Pt J179	N 393058.5512	E 803430.7364
Pt J164	N 392762.0941	E 803472.8413	Pt J180	N 393020.8178	E 803453.3958
Pt J165	N 393093.1567	E 802936.2744	Pt J181	N 392751.1050	E 803411.1050
Pt J166	N 393102.9838	E 802936.2698	Pt J182	N 392758.6968	E 803467.7853
Pt J167	N 393091.8339	E 803011.6942	Pt J202	N 392879.3995	E 802860.1171
Pt J168	N 393086.8341	E 803011.6487	Pt J203	N 392878.9024	E 802885.1121
Pt J204	N 392818.8920	E 802885.0389			
Pt J205	N 392819.3886	E 802860.0682			
Pt J206	N 393083.8621	E 802860.3785			
Pt J207	N 393207.5323	E 803233.6769			
Pt J208	N 393204.9007	E 803176.0650			
Pt J209	N 393275.6539	E 803431.2503			
Pt J210	N 393202.2876	E 802981.0632			
Pt J212	N 393204.1219	E 802888.8356			
Pt J213	N 393281.6219	E 803433.2232			
Pt J214	N 393212.5533	E 803232.7268			
Pt J215	N 393209.8952	E 803175.8316			
Pt J216	N 393207.2866	E 802981.1647			
Pt J217	N 393209.1551	E 802887.2160			



FILE NAME	USER NAME = hobbsjg	DESIGNED -	REVISED -	STATE OF ILLINOIS DEPARTMENT OF TRANSPORTATION	RIGHT OF WAY PLANS		F.A.P. RTE. 331	SECTION	COUNTY	TOTAL SHEETS	SHEET NO.
	PLOT SCALE = 50,000'/In	DRAWN -	REVISED -		PROJECT	JOB NO. R99-007-11		WILLIAMSON	968	337	
	PLOT DATE = 8/26/2011	CHECKED -	REVISED -		SCALE: 1"=50'	SHEET NO. OF SHEETS	STA. TO STA.	FED. ROAD DIST. NO.	ILLINOIS FED. AID PROJECT	CONTRACT NO. 78182	
		DATE -	REVISED -								