
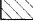

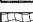

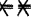


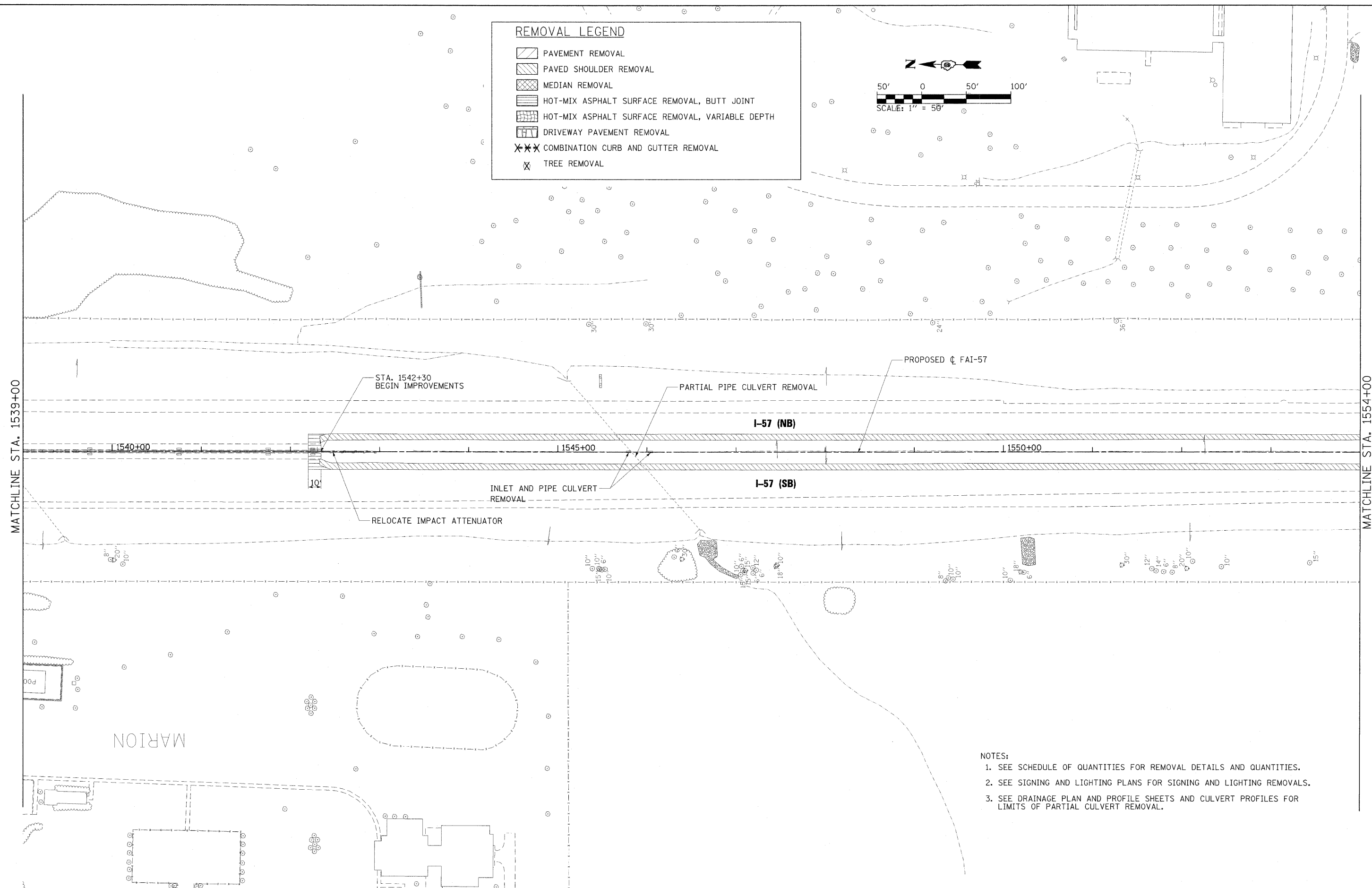
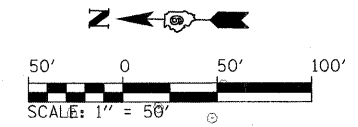


REMOVAL LEGEND

-  PAVEMENT REMOVAL
-  PAVED SHOULDER REMOVAL
-  MEDIAN REMOVAL
-  HOT-MIX ASPHALT SURFACE REMOVAL, BUTT JOINT
-  HOT-MIX ASPHALT SURFACE REMOVAL, VARIABLE DEPTH
-  DRIVEWAY PAVEMENT REMOVAL
-  COMBINATION CURB AND GUTTER REMOVAL
-  TREE REMOVAL



- NOTES:**
1. SEE SCHEDULE OF QUANTITIES FOR REMOVAL DETAILS AND QUANTITIES.
 2. SEE SIGNING AND LIGHTING PLANS FOR SIGNING AND LIGHTING REMOVALS.
 3. SEE DRAINAGE PLAN AND PROFILE SHEETS AND CULVERT PROFILES FOR LIMITS OF PARTIAL CULVERT REMOVAL.

FILE NAME = ...D978182-sht-rem-157_00.dgn	USER NAME = Rob Heady	DESIGNED - AOO	REVISED -	STATE OF ILLINOIS DEPARTMENT OF TRANSPORTATION	REMOVAL PLAN INTERSTATE 57	F.A. RTE.	SECTION	COUNTY	TOTAL SHEETS	SHEET NO.
	PLOT SCALE = 50.0000 "/> IN.	DRAWN - RAH	REVISED -			* (X1-6-2)HRK-2, HB-1,2; (IX-1)R-1	WILLIAMSON	968	346	
	PLOT DATE = 10/7/2011	CHECKED - BJD	REVISED -			* F.A.I. 57 AND F.A.P. 331	CONTRACT NO. 78182			
		DATE - 10/07/11	REVISED -			ILLINOIS FED. AID PROJECT				
						SCALE: 1" = 50' SHEET NO. OF SHEETS STA. 1539+00 TO STA. 1554+00				