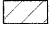
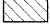




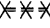

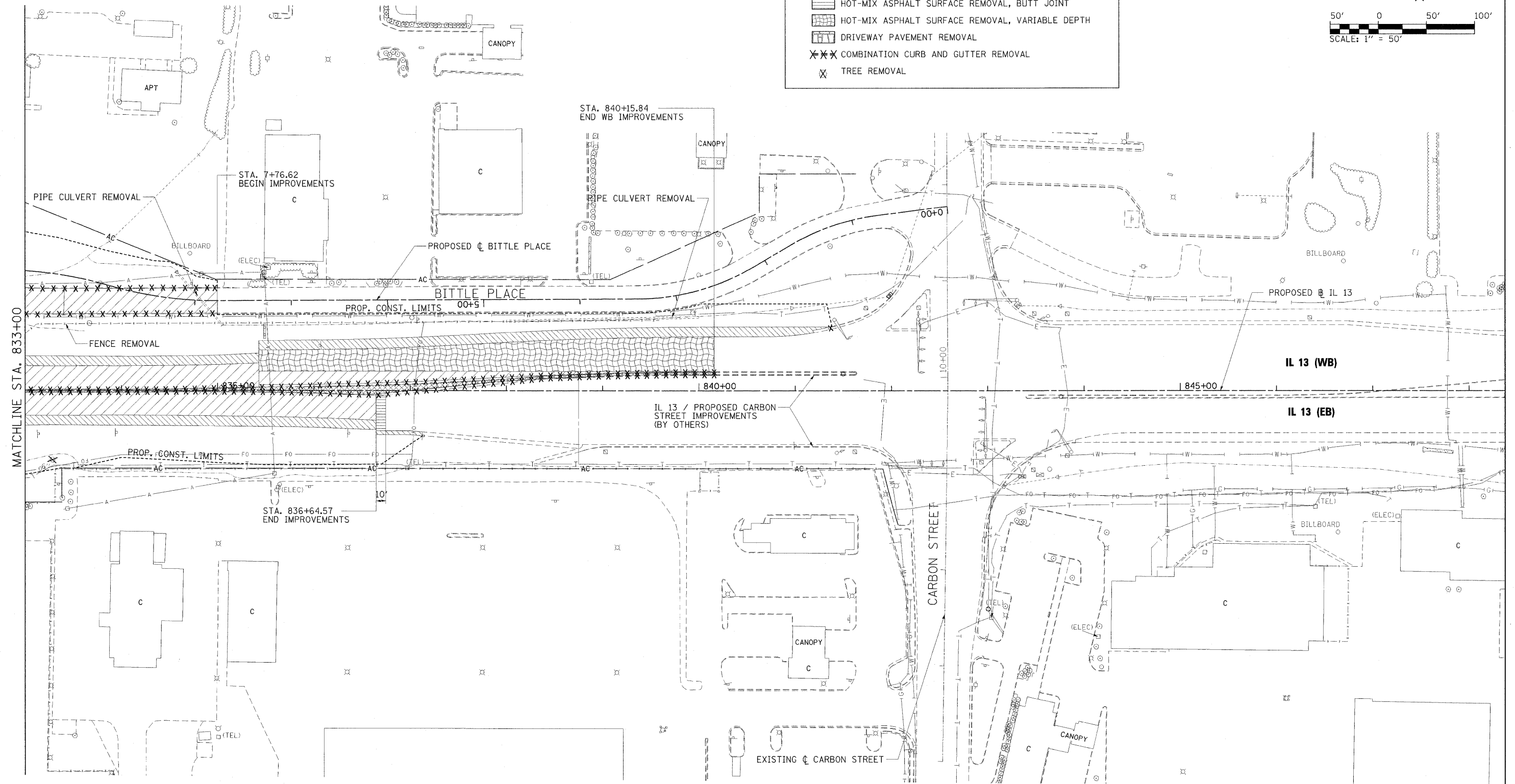
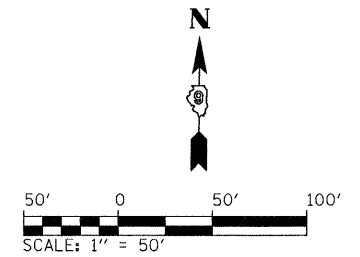


- NOTES:
1. SEE SCHEDULE OF QUANTITIES FOR REMOVAL DETAILS AND QUANTITIES.
 2. SEE SIGNING AND LIGHTING PLANS FOR SIGNING AND LIGHTING REMOVALS.
 3. SEE DRAINAGE PLAN AND PROFILE SHEETS AND CULVERT PROFILES FOR LIMITS OF PARTIAL CULVERT REMOVAL.

REMOVAL LEGEND

-  PAVEMENT REMOVAL
-  PAVED SHOULDER REMOVAL
-  MEDIAN REMOVAL
-  HOT-MIX ASPHALT SURFACE REMOVAL, BUTT JOINT
-  HOT-MIX ASPHALT SURFACE REMOVAL, VARIABLE DEPTH
-  DRIVEWAY PAVEMENT REMOVAL
-  COMBINATION CURB AND GUTTER REMOVAL
-  TREE REMOVAL



FILE NAME = ...\\0978182-sht-rem-IL13_015.dgn
 USER NAME = Brad Downen
 PLOT SCALE = 50.0000' / IN.
 PLOT DATE = 10/13/2011

| | |
|-----------------|----------|
| DESIGNED - MKW | REVISD - |
| DRAWN - MKW | REVISD - |
| CHECKED - BJD | REVISD - |
| DATE - 10/07/11 | REVISD - |

STATE OF ILLINOIS
 DEPARTMENT OF TRANSPORTATION

REMOVAL PLAN
 ILLINOIS ROUTE 13

SCALE: 1" = 50'
 SHEET NO. OF SHEETS STA. 833+00 TO STA. 848+00

| F.A. RTE. | SECTION | COUNTY | TOTAL SHEETS | SHEET NO. |
|------------------------------------|--------------------|--------|--------------|-----------|
| • (X1-6-2)HBK-2, HB-1,2; (1X-1)R-1 | WILLIAMSON | 968 | 352 | |
| • F.A.I. 57 AND F.A.P. 331 | CONTRACT NO. 78182 | | | |
| ILLINOIS FED. AID PROJECT | | | | |