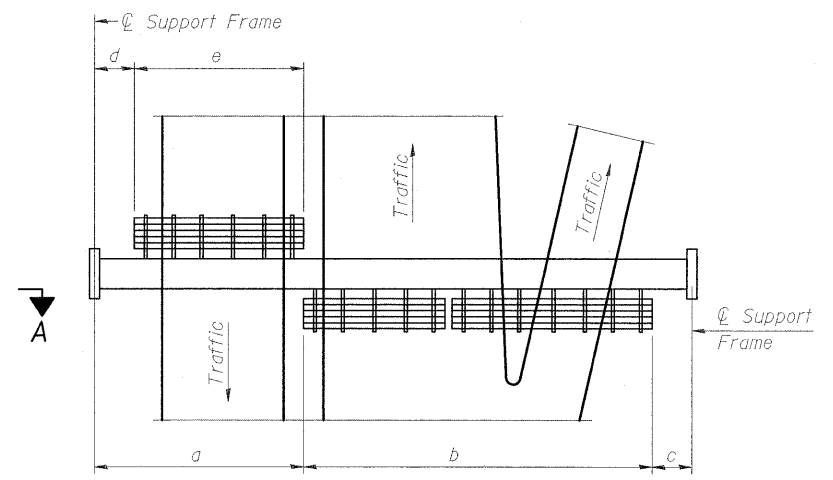


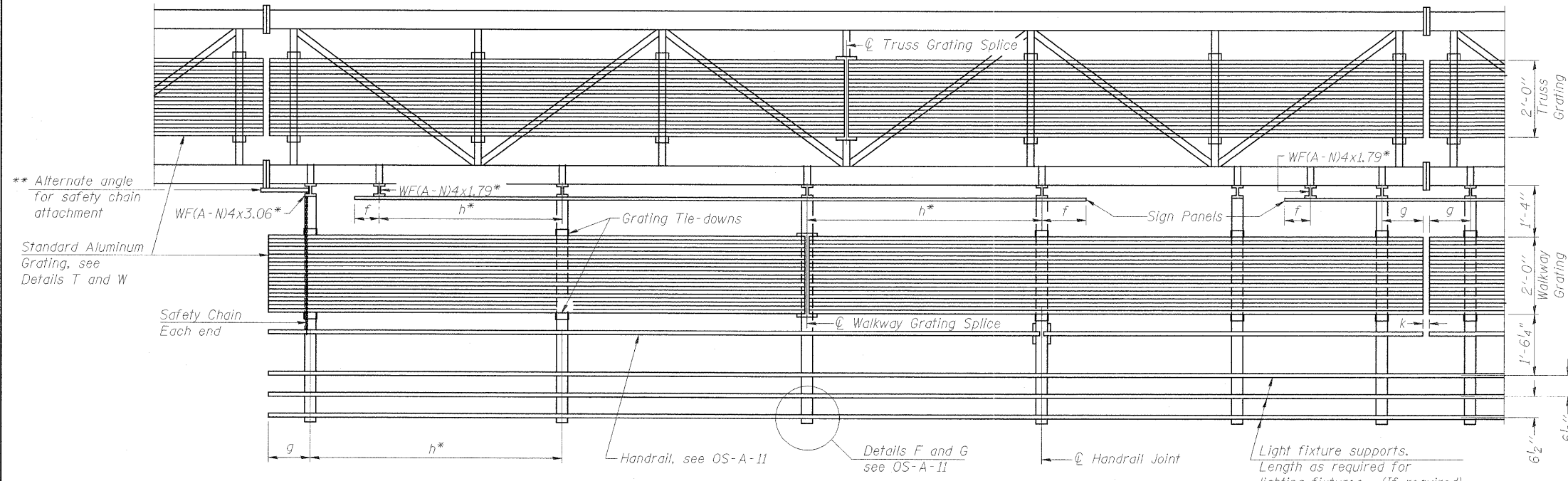
**TYPICAL FRONT ELEVATION**  
 With lights and handrail omitted for clarity.  
 For Section B-B, see Base Sheet OS-A-10.



**PLAN WALKWAY AND HANDRAIL SKETCH**  
 (Road plan beneath truss varies)

**BRACKET TABLE**

WF(A-N)4x1.79 or WF(A-N)4x3.06 ASTM B308, Alloy 6061-T6		
Sign Width		Number Brackets Required
Greater Than	Less Than or Equal To	
8'-0"	14'-0"	2
14'-0"	20'-0"	4
20'-0"	26'-0"	5
26'-0"	32'-0"	6



**SECTION A-A**

Handrail and walkway shall span a minimum of three brackets between splices and/or gap joints. Place all sign and walkway brackets as close to panel points as practical. Handrail joints, grating, and light support splices placed as needed.

- Notes:
- \* Space walkway brackets WF(A-N)4x3.06 and sign brackets WF(A-N)4x1.79 for efficiency and within limits shown:
  - f = 12" maximum, 4" minimum (End of sign to center of nearest bracket)
  - g = 12" maximum, 4" minimum (End of walkway grating to center of nearest support bracket)
  - h = 6'-0" maximum (center to center of sign and/or walkway support brackets, WF(A-N)4x1.79 or WF(A-N)4x3.06)
  - k = 2" maximum gap between adjacent walkway grating sections and handrail ends
  - \*\* If walkway bracket at safety chain location is behind sign, add angle to bracket, see Alternate Safety Chain Attachment on Base Sheet OS-A-11.
- For Details T and W, Section B-B and Grating Splice Details see Base Sheet OS-A-10.  
 For Handrail Details see Base Sheet OS-A-11.

Structure Number	Station	a	b	c	d	e	Walkway Grating and Handrail Lengths
9S1001057L054.9	375+15 (I-57)	31'-0"	30'-0"	29'-0"	NA	NA	30'-0"
9S1001057R053.2	1510+00 (I-57)	8'-0"	65'-6"	2'-6"	NA	NA	65'-6"
9S1001057R052.2	1561+41 (I-57) N=384563.1, E=803503.9	5'-9"	40'-6"	29'-9"	NA	NA	40'-6"
9S100L013R000.0	1799+76 (IL 13)	11'-0"	53'-0"	26'-0"	NA	NA	53'-0"
9S100L013R000.1	1810+29 (IL 13)	67'-6"	68'-0"	23'-6"	23'-6"	44'-0"	112'-0"
9S100L013R000.2	1817+04 (IL 13)	67'-6"	68'-0"	23'-6"	23'-6"	44'-0"	112'-0"
9S100L013L000.3	833+55 (IL 13)	12'-0"	40'-0"	28'-0"	NA	NA	40'-0"
9S1001057R000.4	15+13 (RAMP B)	27'-0"	49'-0"	27'-0"	NA	NA	49'-0"
9S1001057L000.5	119+25 (RAMP D)	27'-0"	49'-0"	27'-0"	NA	NA	49'-0"

Truss grating to facilitate inspection shall run full length (center to center of support frames) ±12" on overhead trusses. Cost of truss grating is included in "Overhead Sign Structure".

Walkway and Truss Grating width dimensions are nominal and may vary ±1/2" based on available standard widths.

OS-A-9

1-20-11

FILE NAME = ...D978182-sht-sign-087-Truss-OS-A-9.dgn	USER NAME = Rob Heedy	DESIGNED - JH	REVISED -	<b>STATE OF ILLINOIS DEPARTMENT OF TRANSPORTATION</b>	<b>OVERHEAD SIGN STRUCTURES ALUMINUM WALKWAY DETAILS</b>	F.A. RTE.	SECTION	COUNTY	TOTAL SHEETS	SHEET NO.
PLOT SCALE = 50.0000' / IN.	CHECKED - SD	REVISED -	* 0X1-6-2HBK-2, HB-1,2; (IX-1R-1			WILLIAMSON	968	500		
PLOT DATE = 10/7/2011	DATE - 10/07/11	REVISED -	* F.A.I. 57 AND F.A.P. 331			CONTRACT NO. 78182				
						ILLINOIS FED. AID PROJECT				

**EFK•Moen, LLC**  
 Civil Engineering Design