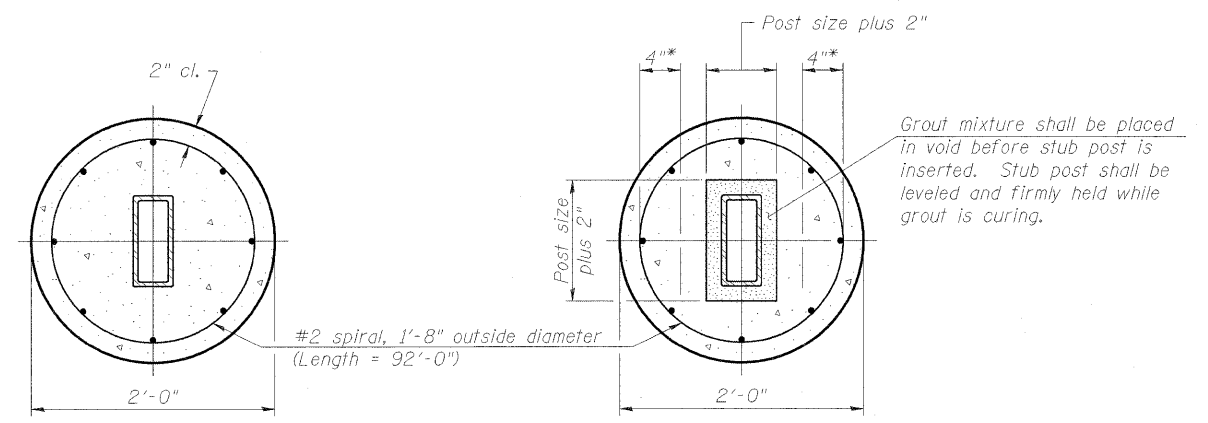


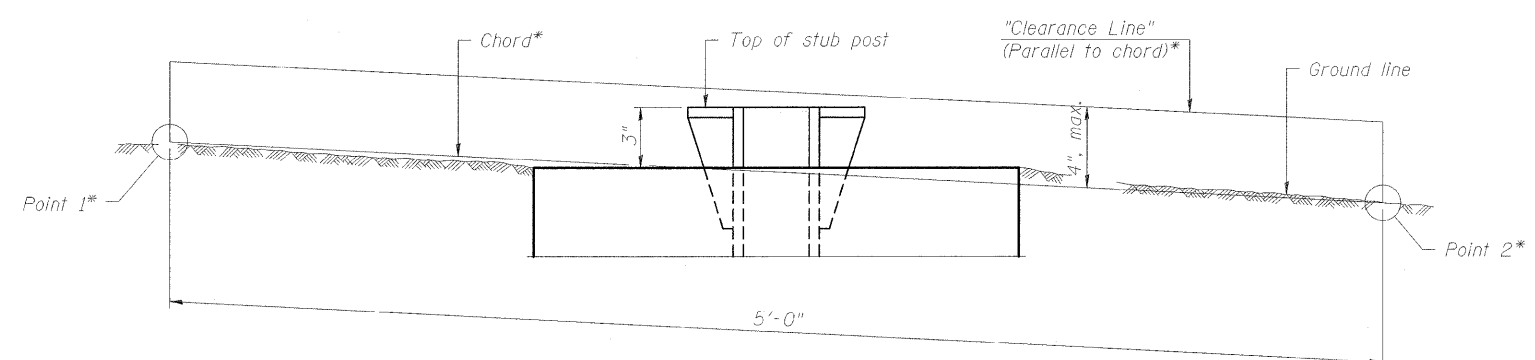
FRONT ELEVATION **SIDE ELEVATION**

MAIN POST & STUB POST



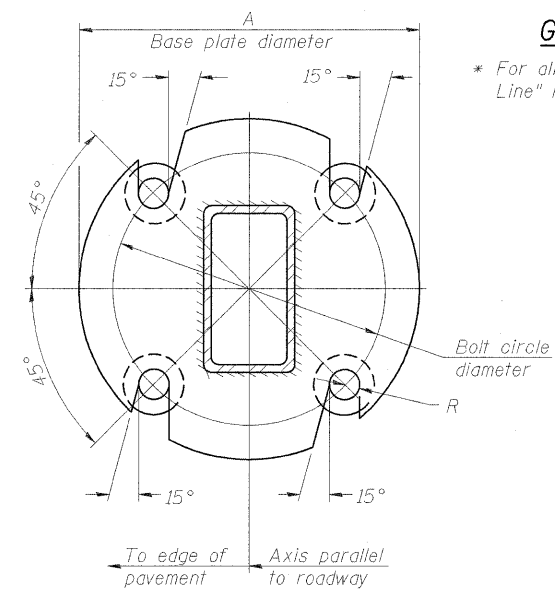
SECTION A-A (CAST-IN-PLACE) **OR** **SECTION A-A (PRECAST)**

* Hot dip galvanized lifting loops or inserts may be placed in precast foundation inside the spiral reinforcement but not within 6" of the long axis of the post. Inserts must be adequate for safely lifting a total of 3,000 pounds and must not interfere with installation of the stub post or proper functioning of the slip base.

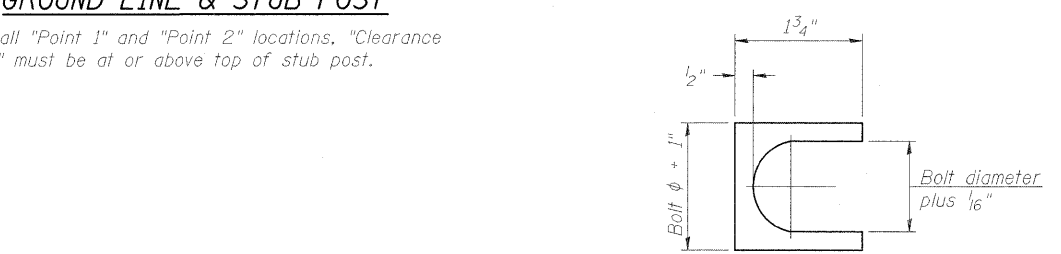


ELEVATION
GROUND LINE & STUB POST

* For all "Point 1" and "Point 2" locations, "Clearance Line" must be at or above top of stub post.

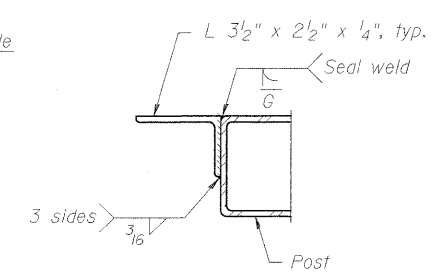


SECTION B-B



SHIM DETAIL

Furnish two 0.01" thick and two 0.03" thick stainless steel or brass (ASTM B36) shims per post.



SECTION C-C

Weld continuously around corners.

BAT-A-2

1-20-11

(Sheet 2 of 2)

FILE NAME = ... \D978182-shr-sign184-Tub Steel-BAT-A-2.dgn	USER NAME = Rob Heady	DESIGNED - JH	REVISIONS -	STATE OF ILLINOIS DEPARTMENT OF TRANSPORTATION	BREAK-AWAY TUBULAR STEEL SIGN POSTS AND DETAILS	F.A. RTE.	SECTION	COUNTY	TOTAL SHEETS	SHEET NO.
PLOT SCALE = 50.000000' / IN.	DRAWN - JH	CHECKED - SD	REVISIONS -			* 0X1-6-2HBK-2, HB-1,2; (1X-1JR-1	WILLIAMSON	968	517	
PLOT DATE = 10/7/2011	DATE - 10/07/11	REVISIONS -	REVISIONS -			* F.A.I. 57 AND F.A.P. 331	CONTRACT NO. 78182	ILLINOIS FED. AID PROJECT		
						SCALE:	SHEET NO. 2 OF 2 SHEETS	STA.	TO STA.	