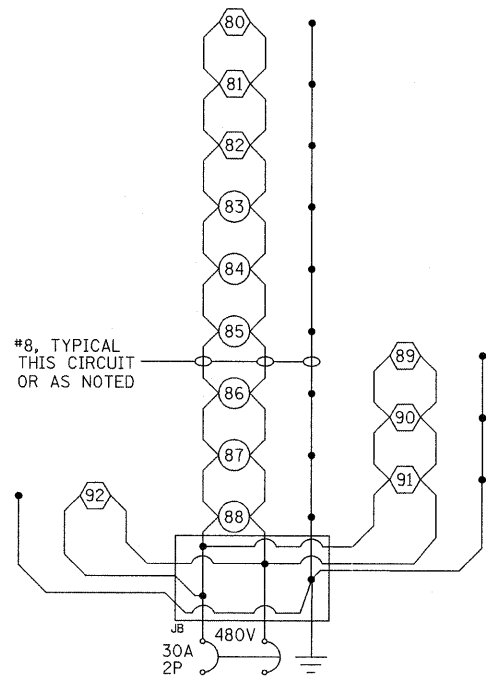
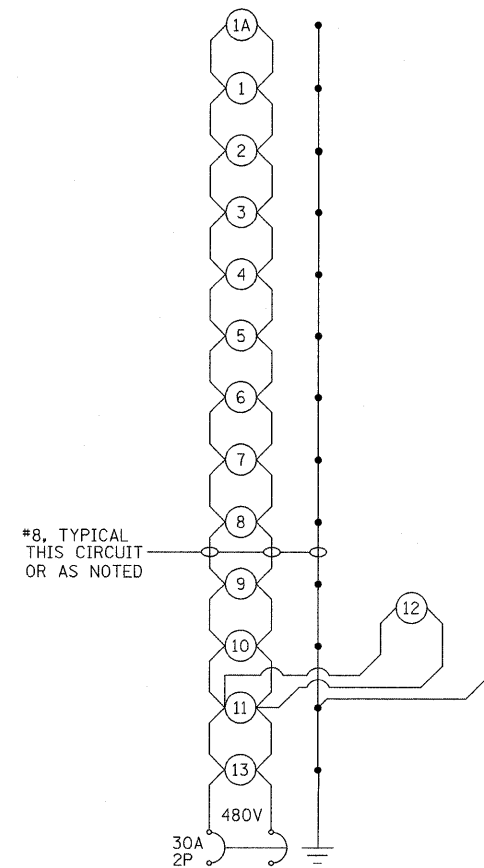


LIGHTING CKT 1
PROPOSED LIGHTING CONTROLLER#2 BASE MOUNTED



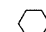



LIGHTING CKT 2
PROPOSED LIGHTING CONTROLLER#2 BASE MOUNTED

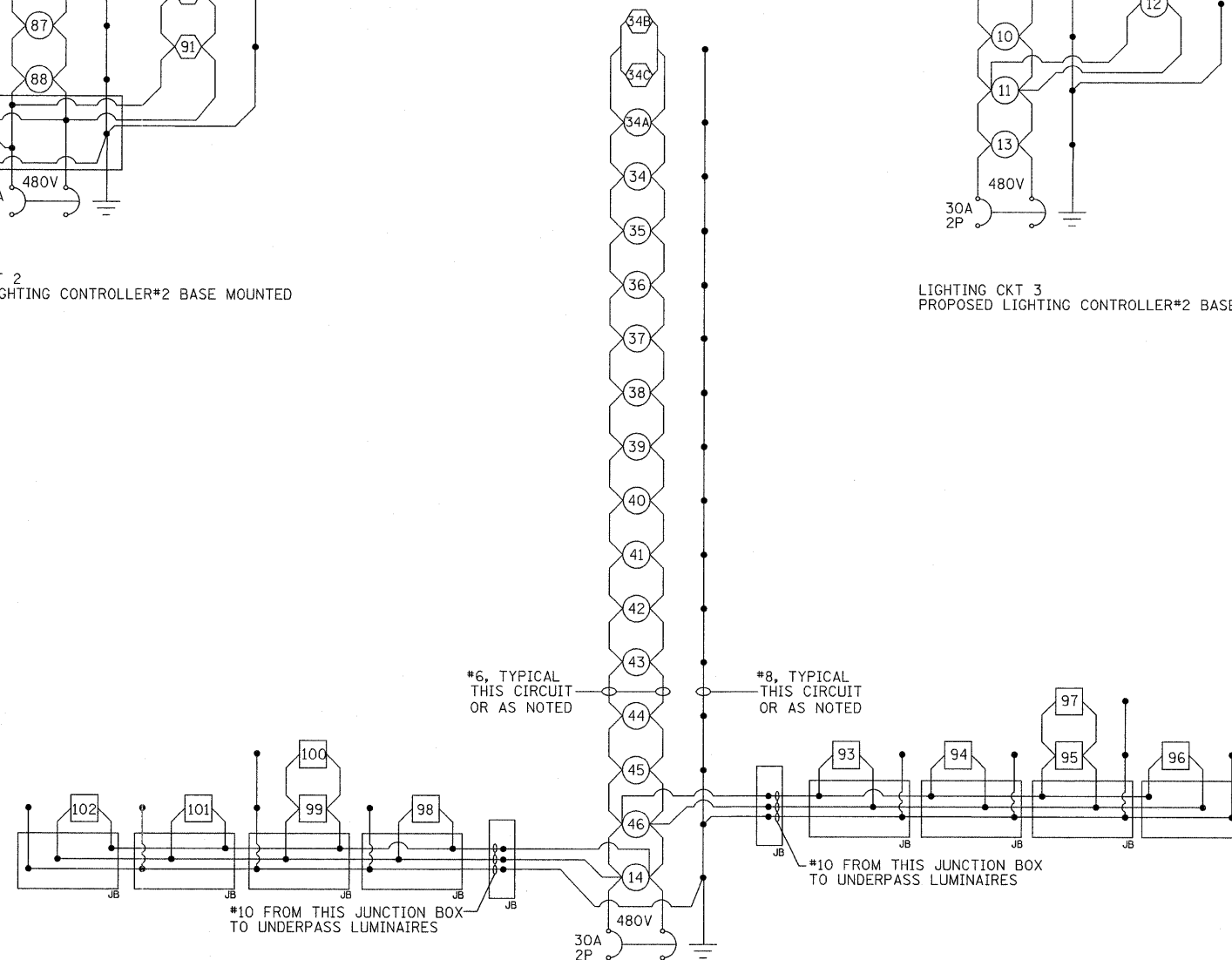


LIGHTING CKT 3
PROPOSED LIGHTING CONTROLLER#2 BASE MOUNTED

NOTES:

- ALL NECESSARY REVISIONS TO THE WIRING SHOWN ON THIS SHEET SHALL BE MADE AT NO ADDITIONAL COST TO THE DEPARTMENT AND TO THE SATISFACTION OF THE ENGINEER.

-  400W PROPOSED LUMINAIRE
-  250W PROPOSED LUMINAIRE
-  150W PROPOSED UNDERPASS LUMINAIRE
-  JUNCTION BOX



LIGHTING CKT 4
PROPOSED LIGHTING CONTROLLER#2 BASE MOUNTED

FILE NAME = ...N0978182-shd-T.Light.dtl-L33.dgn	USER NAME = Gary Davis	DESIGNED - IDOT CENTRAL OFFICE	REVISIONS -	STATE OF ILLINOIS DEPARTMENT OF TRANSPORTATION	WIRING DIAGRAM (IL-13 CONTROLLER) INTERSTATE 57		F.A. RTE.	SECTION	COUNTY	TOTAL SHEETS	SHEET NO.	
	PLOT SCALE = 1/8" = 1' IN.	DRAWN - GLD (CMT)	REVISIONS -		SCALE: N.T.S.	SHEET NO. L33 OF L42 SHEETS	STA.		WILLIAMSON	968	576	
	PLOT DATE = 10/17/2011	CHECKED -	REVISIONS -				TO STA.					
		DATE - 10/7/2011	REVISIONS -						* F.A.I. 57 AND F.A.P. 331			CONTRACT NO. 78182
ILLINOIS FED. AID PROJECT												