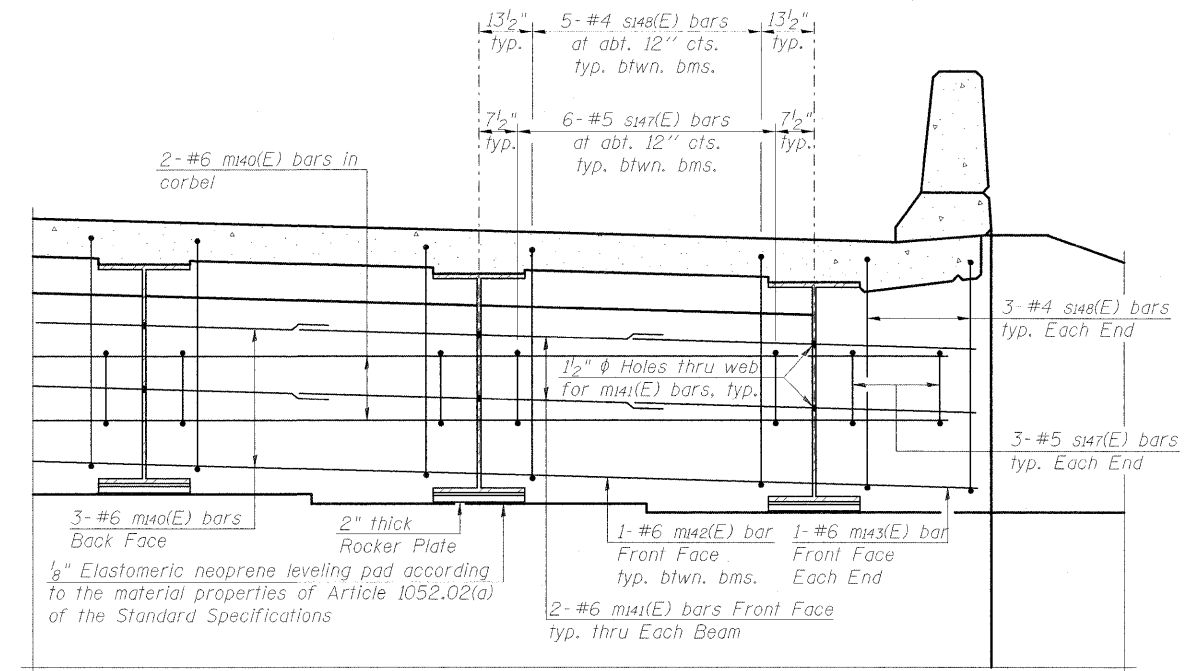
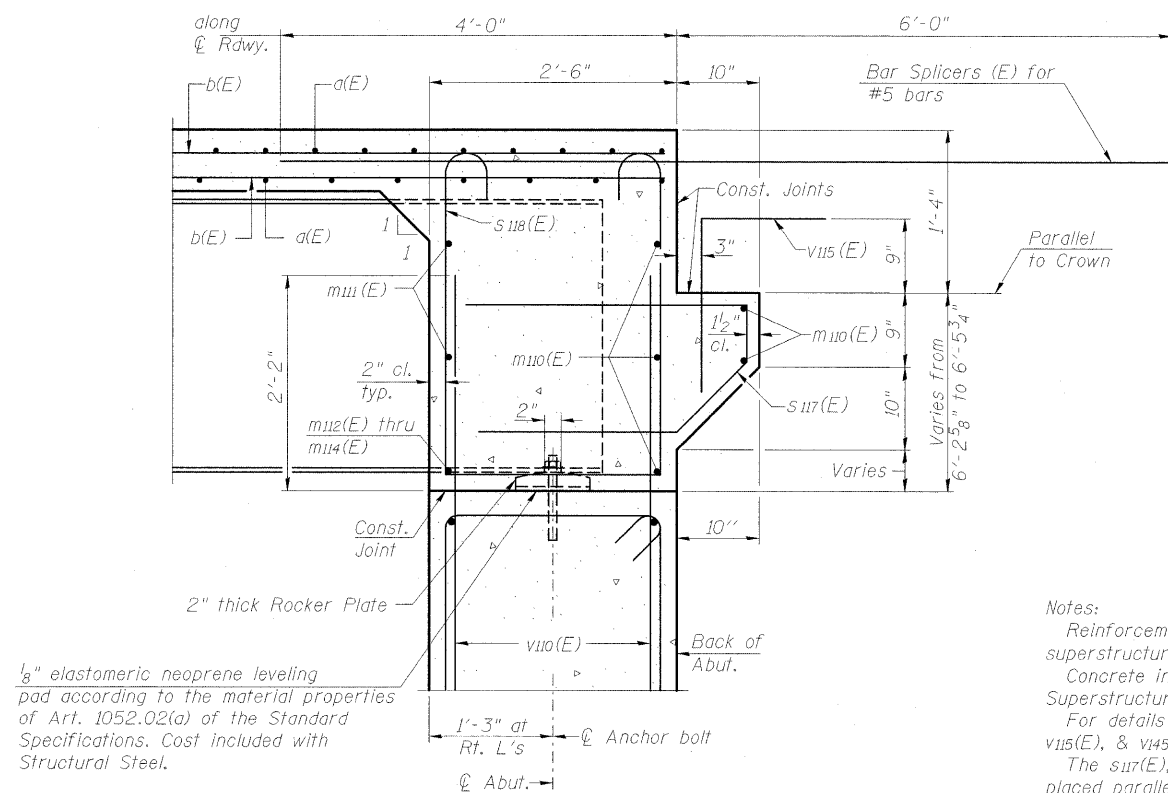


DIAPHRAGM ELEVATION AT NORTH ABUTMENT



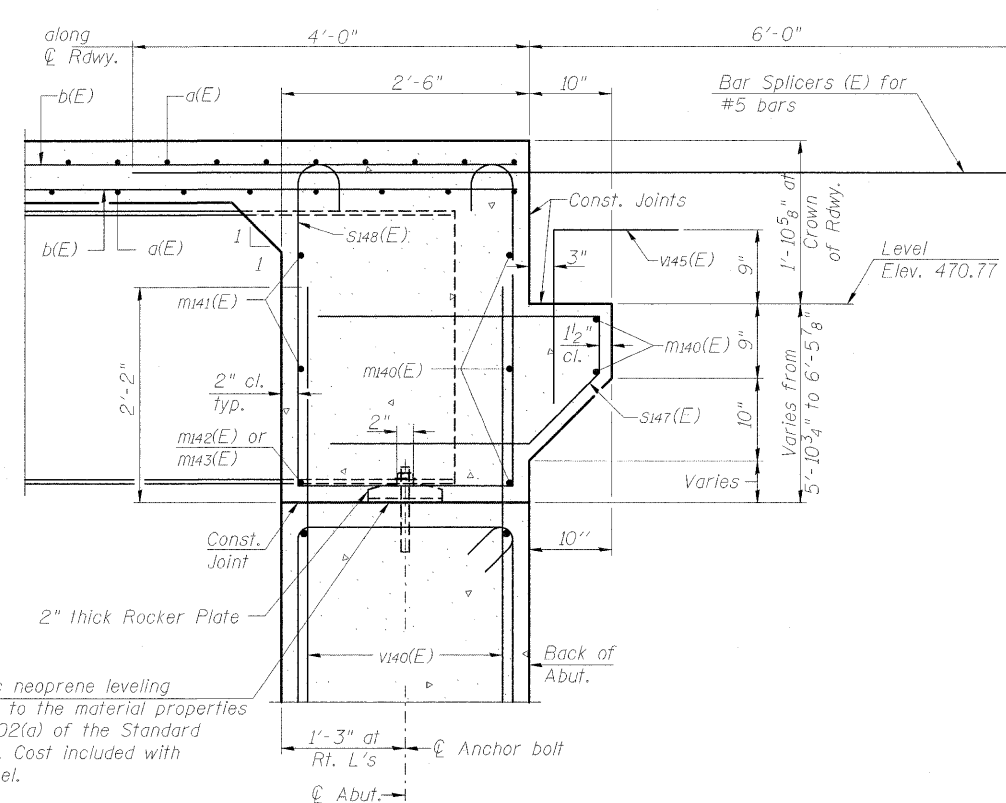
DIAPHRAGM ELEVATION AT SOUTH ABUTMENT



SECTION THRU DIAPHRAGM AT NORTH ABUTMENT
Dimensions at right angles to abutment, except as shown.

Notes:
Reinforcement bars in diaphragm are billed with superstructure on sheet 21 of 75.
Concrete in diaphragm is included with Concrete Superstructure on sheet 21 of 75.
For details of bars s117(E), s118(E), s147(E), s148(E), v115(E), & v145(E) see sheet 21 of 75.
The s117(E), s118(E), s147(E), & s148(E) bars shall be placed parallel to the beams. Spacing for these bars shall be at right angles to the beams.

MIN. BAR LAP
#6 bar = 3'-4"



SECTION THRU DIAPHRAGM AT SOUTH ABUTMENT
Dimensions at right angles to abutment, except as shown.



FILE NAME = ...V042-INTEGRAL ABUT DETAILS.NB.dgn
USER NAME = Rob Heady
DESIGNED - JDJ
CHECKED - REB
DRAWN - GLD
PLOT DATE = 10/7/2011

DESIGNED - JDJ
CHECKED - REB
DRAWN - GLD
CHECKED - REB

REVISIONS:
REVISIONS -
REVISIONS -
REVISIONS -

STATE OF ILLINOIS
DEPARTMENT OF TRANSPORTATION

INTEGRAL ABUTMENT DIAPHRAGM DETAILS
STRUCTURE NO. 100-0088 (N.B.)

SHEET NO. 31 OF 75 SHEETS

F.A.I. RTE.	SECTION	COUNTY	TOTAL SHEETS	SHEET NO.
57	(X1-6-2)HBK-2	WILLIAMSON	968	616
			CONTRACT NO. 78182	
ILLINOIS FED. AID PROJECT				