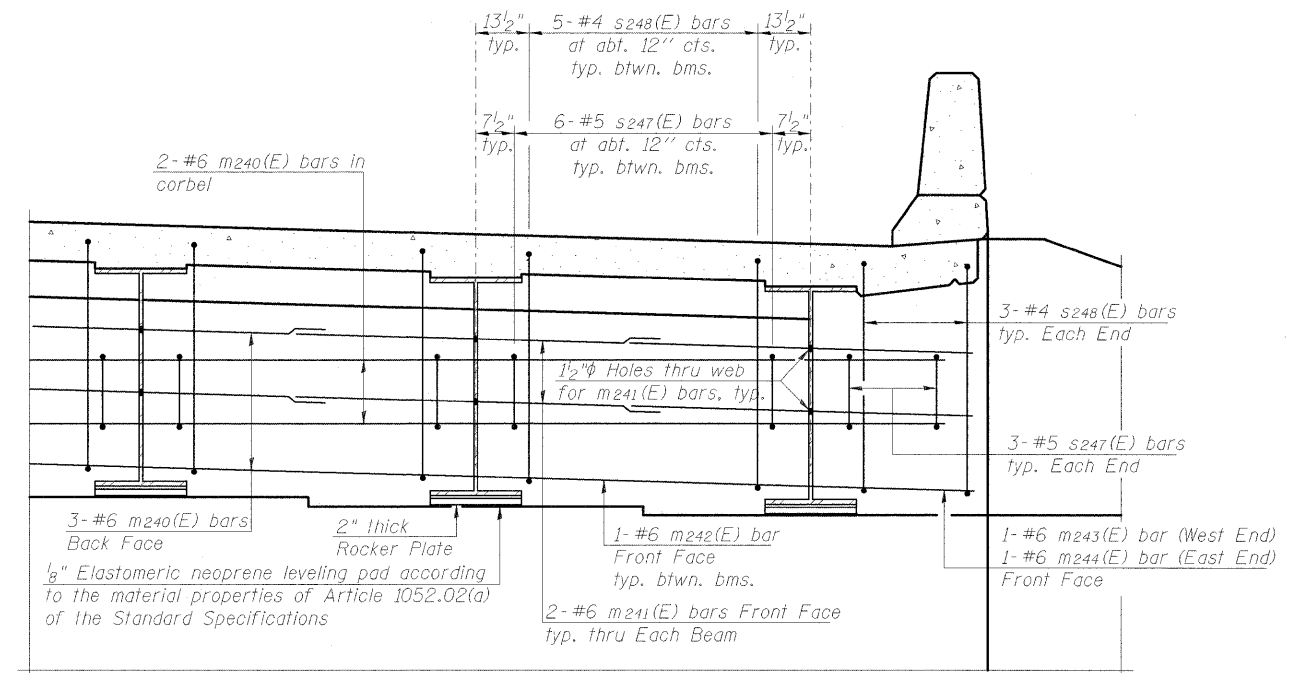
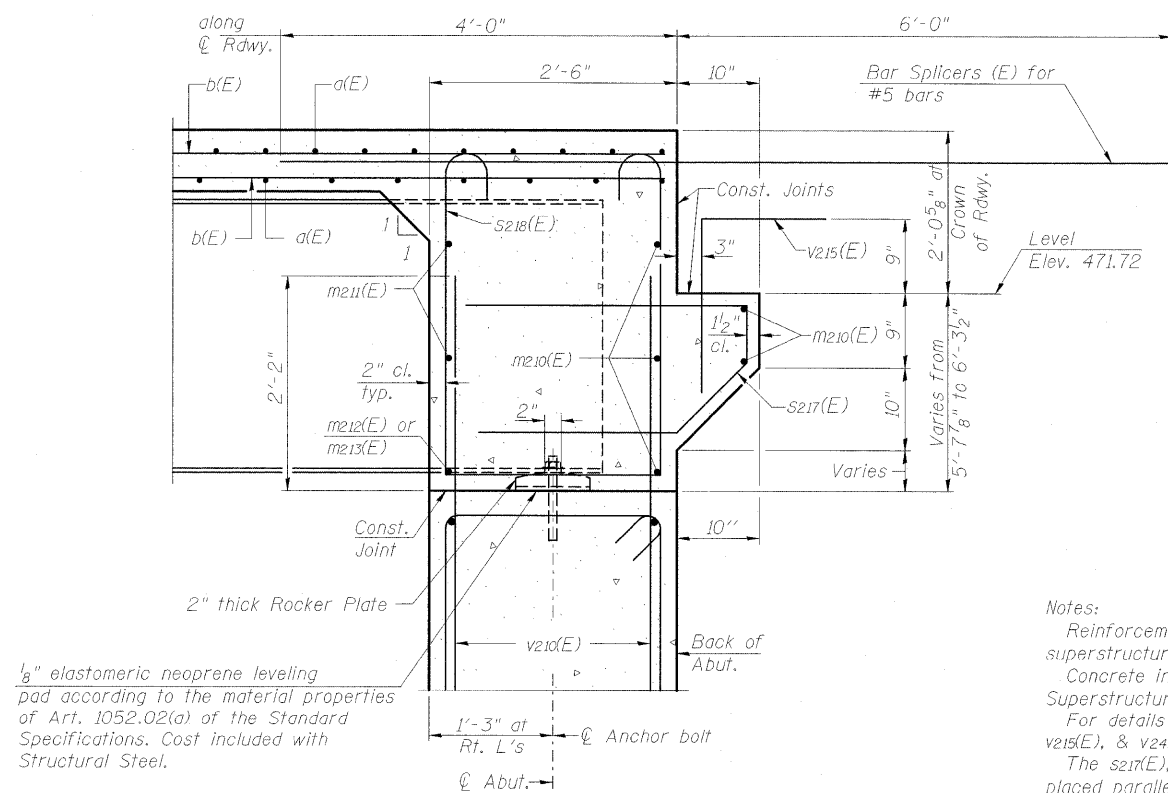


DIAPHRAGM ELEVATION AT NORTH ABUTMENT



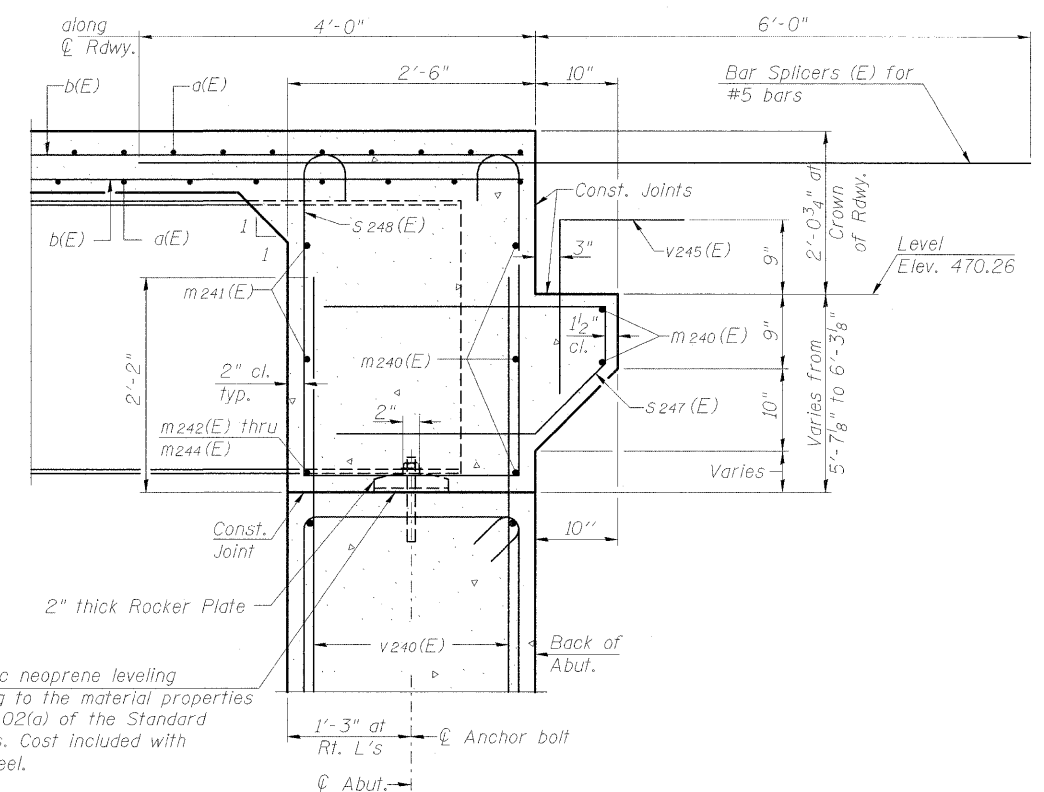
DIAPHRAGM ELEVATION AT SOUTH ABUTMENT



SECTION THRU DIAPHRAGM AT NORTH ABUTMENT

Dimensions at right angles to abutment, except as shown.

Notes:
 Reinforcement bars in diaphragm are billed with superstructure on sheet 25 of 75.
 Concrete in diaphragm is included with Concrete Superstructure on sheet 25 of 75.
 For details of bars s217(E), s218(E), s247(E), s248(E), v215(E), & v245(E) see sheet 25 of 75.
 The s217(E), s218(E), s247(E), & s248(E) bars shall be placed parallel to the beams. Spacing for these bars shall be at right angles to the beams.



SECTION THRU DIAPHRAGM AT SOUTH ABUTMENT

Dimensions at right angles to abutment, except as shown.

MIN. BAR LAP
 #6 bar = 3'-4"

CMT
 CRAWFORD MURPHY & TILLY, INC.
 CONSULTING ENGINEERS
 SPRINGFIELD, IL ■ ALBANY, IL ■ ST. LOUIS, MO
 ROCKFORD, IL ■ PEORIA, IL ■ CHICAGO, IL

FILE NAME = ...V043-INTEGRAL ABUT DETAILS.SB.dgn
 USER NAME = Rob Heady
 DESIGNED - JDJ
 CHECKED - REB
 DRAWN - GLD
 CHECKED - REB
 PLOT SCALE =
 PLOT DATE = 10/7/2011

DESIGNED - JDJ	REVISD -
CHECKED - REB	REVISD -
DRAWN - GLD	REVISD -
CHECKED - REB	REVISD -

STATE OF ILLINOIS
 DEPARTMENT OF TRANSPORTATION

INTEGRAL ABUTMENT DIAPHRAGM DETAILS
 STRUCTURE NO. 100-0089 (S.B.)

SHEET NO. 32 OF 75 SHEETS

F.A.I. RTE. 57	SECTION (X1-6-2)HBK-2	COUNTY WILLIAMSON	TOTAL SHEETS 968	SHEET NO. 617
CONTRACT NO. 78182			ILLINOIS FED. AID PROJECT	