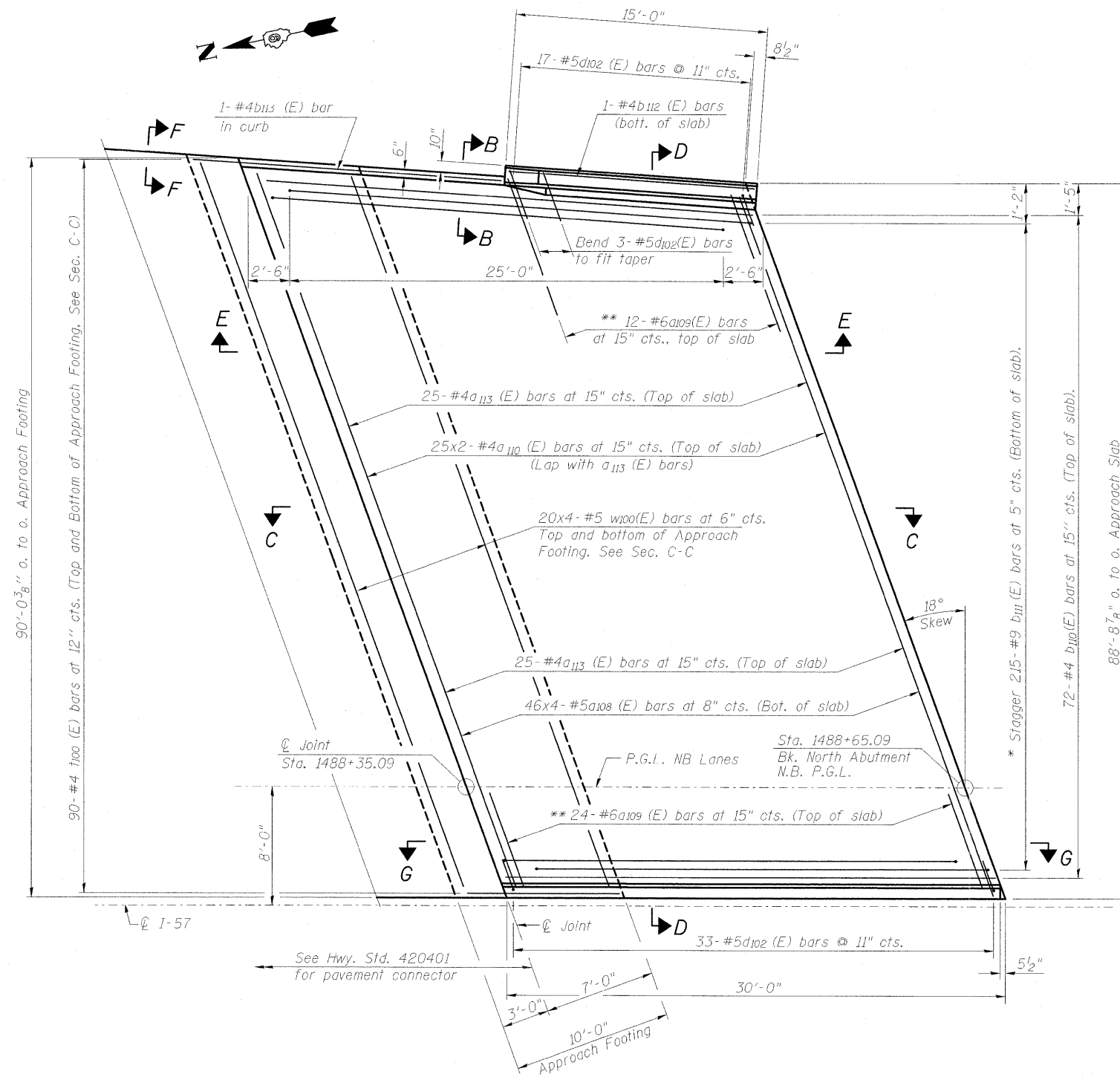


NOTES:

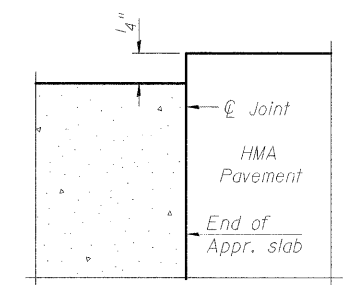
1. See sheet 34 of 75 for Sections C-C & D-D and View E-E & G-G.
2. a_{113} (E), a_{108} (E) and a_{110} (E) bar spacings measured along P.G.L.
3. Bars indicated thus 20x4-#5 etc. indicates 20 lines of bars with 4 lengths per line.



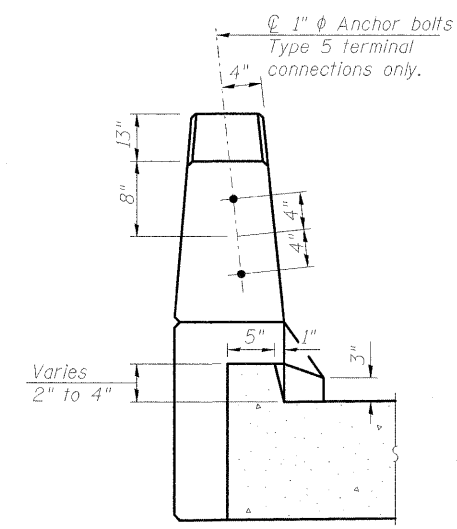
MINIMUM BAR LAP
 #4 bar = 2'-7"
 #5 bar = 3'-3"

PLAN

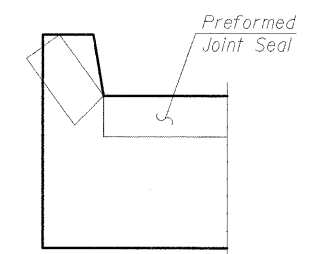
- * Tilt #9 b_{111} (E) bars as required to maintain clearance.
- ** Space between a_{113} (E) bars



**FLEXIBLE PAVEMENT
 DETAIL A**



VIEW B-B



VIEW F-F

Angle Preformed Joint Seal at 45° at curbs when req'd for drainage.

(Sheet 1 of 2)



FILE NAME = ...1025_NO BR APP SLAB DTLS-1-NB.dgn
 USER NAME = Rob Heady
 PLOT SCALE =
 PLOT DATE = 10/7/2011

DESIGNED - BPD	REVISIONS -
CHECKED - WLB	REVISIONS -
DRAWN - GLD	REVISIONS -
CHECKED - BPD	REVISIONS -

**STATE OF ILLINOIS
 DEPARTMENT OF TRANSPORTATION**

**NORTH BRIDGE APPROACH SLAB DETAILS
 STRUCTURE NO. 100-0088 (N.B.)**

SHEET NO. 33 OF 75 SHEETS

F.A. RTE.	SECTION	COUNTY	TOTAL SHEETS	SHEET NO.
*	(X1-6-2)HBK-2	WILLIAMSON	968	618
* F.A.I. 57 AND F.A.P. 331		CONTRACT NO. 78182		
ILLINOIS FED. AID PROJECT				