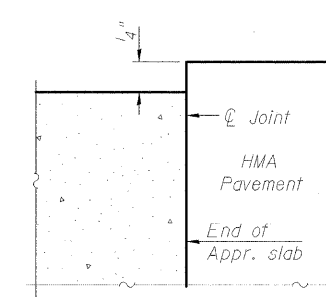
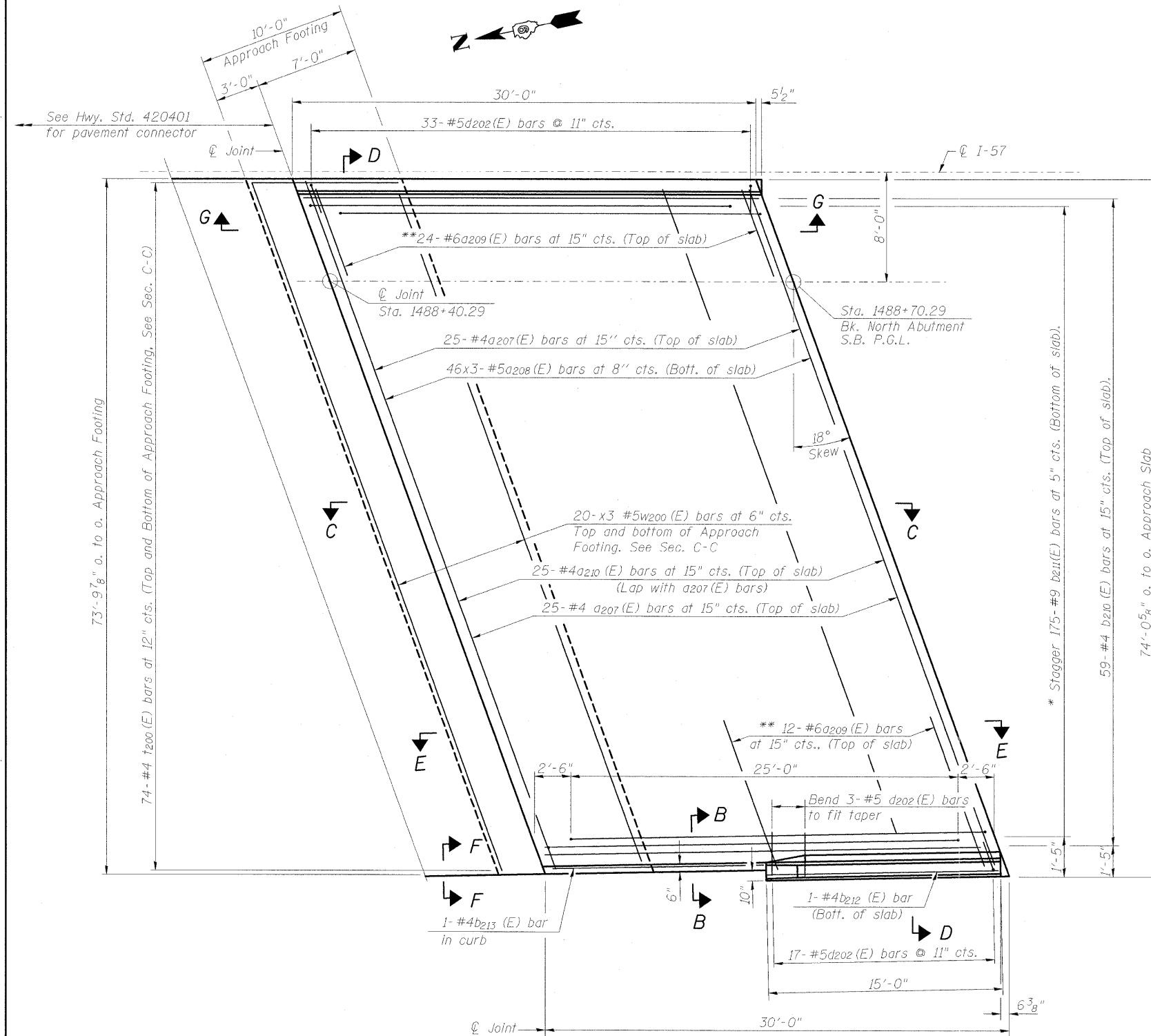
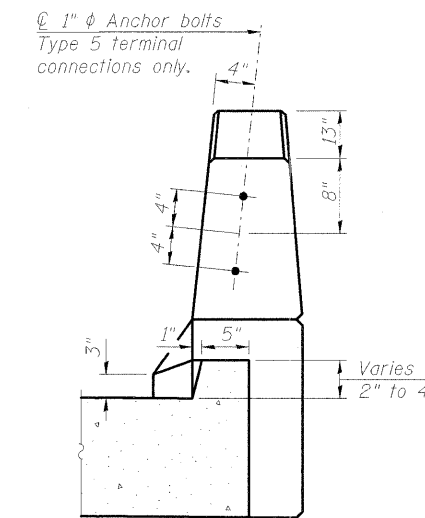


**NOTES:**

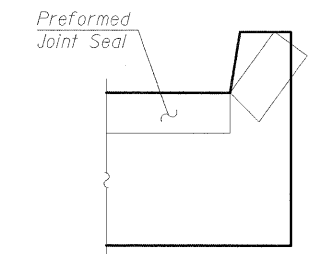
1. See sheet 38 of 75 for Sections C-C & D-D and View E-E & G-G.
2. a207(E), a208(E) and a210(E) bar spacings measured along PGL.
3. Bars indicated thus 20x3-#5 etc. indicates 20 lines of bars with 3 lengths per line.



**FLEXIBLE PAVEMENT  
DETAIL A**



**VIEW B-B**



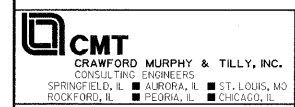
**VIEW F-F**

Angle Preformed Joint Seal at 45° at curbs when req'd for drainage.

**MINIMUM BAR LAP**  
#4 bar = 2'-7"  
#5 bar = 3'-3"

**PLAN**

\* Tilt #9 b211(E) bars as required to maintain clearance.  
\*\* Space between a207(E) bars, typ. each parapet.



FILE NAME = ...1029_NO BR APP SLAB DTLS-1-SB.dgn	USER NAME = Rob Heady	DESIGNED - BPD	REVISIONS -
PLOT SCALE =	DRAWN - GLD	CHECKED - BPD	REVISIONS -
PLOT DATE = 10/7/2011			

**STATE OF ILLINOIS  
DEPARTMENT OF TRANSPORTATION**

**NORTH BRIDGE APPROACH SLAB DETAILS  
STRUCTURE NO. 100-0089 (S.B.)**

SHEET NO. 37 OF 75 SHEETS

F.A. RTE.	SECTION	COUNTY	TOTAL SHEETS	SHEET NO.
*	(X1-6-2)HBK-2	WILLIAMSON	968	622
* F.A.I. 57 AND F.A.P. 331			CONTRACT NO. 78182	
[ILLINOIS] FED. AID PROJECT				

(Sheet 1 of 2)