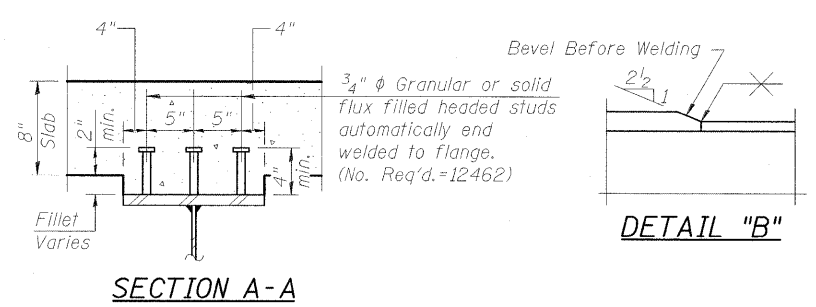


- Notes:**
1. Load carrying components designated "NTR" shall conform to the Supplemental Requirements for Notch Toughness, Zone 2.
  2. For Framing Plan, see Sheet 42 of 75.
  3. Spacing for 1/2"x8 1/2" full height stiffener R's for traffic signal mounting system, West face of girder 19 only.
  4. See Sheet 447 of 814 for details of traffic signal mounting system.

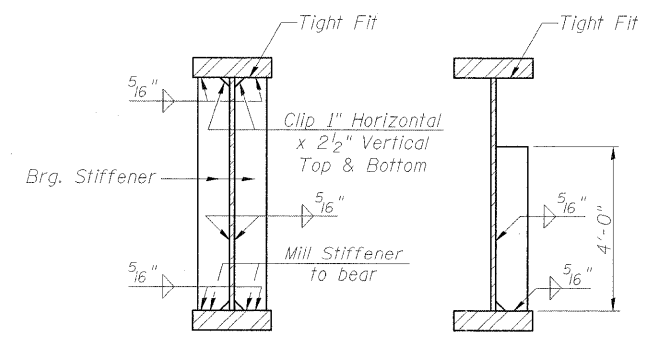
**GIRDER ELEVATION**  
 "NTR" denotes plates to which notch toughness requirements are applicable.

**GIRDER DIMENSION TABLE**

	A	B	C	D	E	F	G	H	I	J	K	L	M	N
Girder 11	408'-4 1/2"	99'-2 1/4"	210'-0"	40'-0"	28'-8 1/4"	55'-0"	40'-0"	2'-5 1/2"	6"	143	95'-4"	9 1/4"	14'-4 1/8"	27'-6"
Girder 12	408'-0 5/8"	99'-1 3/8"	209'-10"	39'-11 5/8"	28'-7 3/8"	54'-11 1/2"	39'-11"	2'-4 7/16"	5 5/8"	143	95'-4"	8 3/4"	14'-3 13/16"	27'-5 3/4"
Girder 13	407'-8 5/8"	99'-0 3/8"	209'-7 7/8"	39'-11 1/4"	28'-7 1/4"	54'-10 7/8"	39'-10 1/4"	2'-3 1/4"	5 1/4"	143	95'-4"	8 1/4"	14'-3 5/8"	27'-5 1/16"
Girder 14	407'-4 3/4"	99'-11 3/8"	209'-6"	39'-10 3/4"	28'-6 5/8"	54'-10 1/2"	39'-9 1/4"	2'-2 1/4"	4 1/4"	143	95'-4"	7 13/16"	14'-3 5/16"	27'-5 1/4"
Girder 15	407'-1"	98'-10 1/2"	209'-4"	39'-10 1/2"	28'-6"	54'-9 7/8"	39'-8 1/4"	2'-1 1/8"	4 1/2"	143	95'-4"	7 5/16"	14'-3"	27'-4 15/16"
Girder 16	406'-9 1/4"	98'-9 5/8"	209'-2"	39'-10 1/4"	28'-5 1/2"	54'-9 1/4"	39'-7 1/4"	2'-0"	4"	142	94'-8"	10 7/8"	14'-2 3/4"	27'-4 5/8"
Girder 17	406'-5 3/8"	98'-8 5/8"	209'-0 1/4"	39'-9 3/4"	28'-4 7/8"	54'-8 3/4"	39'-6 1/4"	1'-11"	3 3/4"	142	94'-8"	10 5/16"	14'-2 7/16"	27'-4 3/8"
Girder 18	406'-1 5/8"	98'-7 3/4"	208'-10 1/4"	39'-9 1/4"	28'-4 1/2"	54'-8 3/8"	39'-5 1/4"	1'-10 1/4"	3 1/4"	142	94'-8"	9 7/8"	14'-2 1/4"	27'-4 3/16"
Girder 19	405'-9"	98'-6 1/8"	208'-7 1/4"	39'-8 1/8"	28'-4"	54'-7 1/2"	39'-4 1/4"	1'-8 3/4"	2 7/8"	142	94'-8"	9 3/8"	14'-2"	27'-3 3/4"

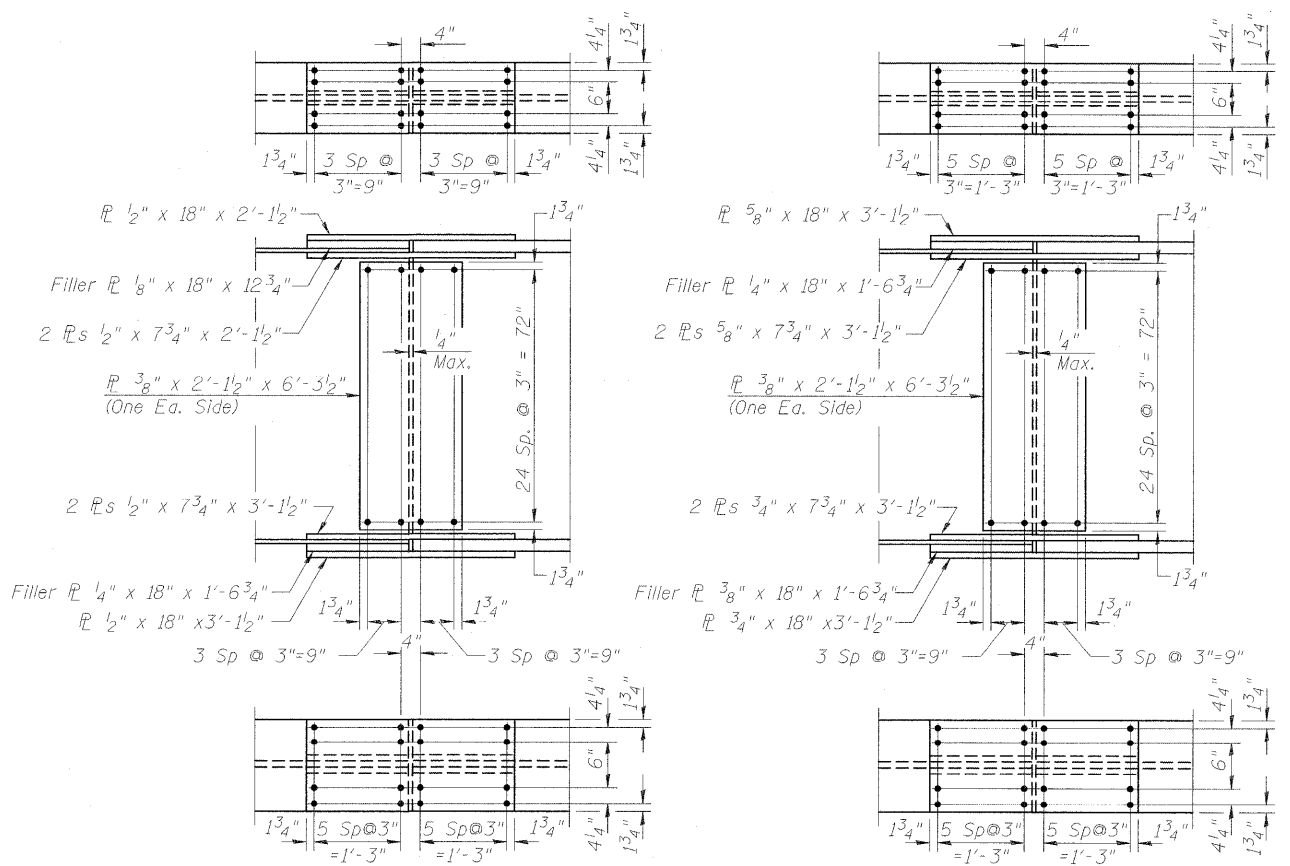


**DETAIL "B"**



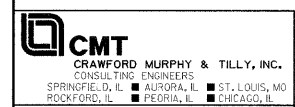
**SECTION AT PIER**

**SECTION AT TRAFFIC SIGNAL MOUNTING SYSTEM STIFFENER**



**FIELD SPLICE 1 & 4 DETAIL**

**FIELD SPLICE 2 & 3 DETAIL**



FILE NAME = ... \836.STRUCT STEEL DETAILS.SB.dgn  
 USER NAME = Rob Heady  
 DESIGNED - BPD  
 CHECKED - WLB  
 DRAWN - GLD  
 CHECKED - BPD

DESIGNED - BPD  
 CHECKED - WLB  
 DRAWN - GLD  
 CHECKED - BPD

REVISIONS:  
 REVISIONS -  
 REVISIONS -  
 REVISIONS -  
 REVISIONS -

**STATE OF ILLINOIS  
 DEPARTMENT OF TRANSPORTATION**

**STRUCTURAL STEEL DETAILS  
 STRUCTURE NO. 100-0089 (S.B.)  
 SHEET NO. 44 OF 75 SHEETS**

F.A. RTE.	SECTION	COUNTY	TOTAL SHEETS	SHEET NO.
*	OX1-6-2HKB-2	WILLIAMSON	968	629
* F.A.I. 57 AND F.A.P. 331		CONTRACT NO. 78182		
ILLINOIS FED. AID PROJECT				