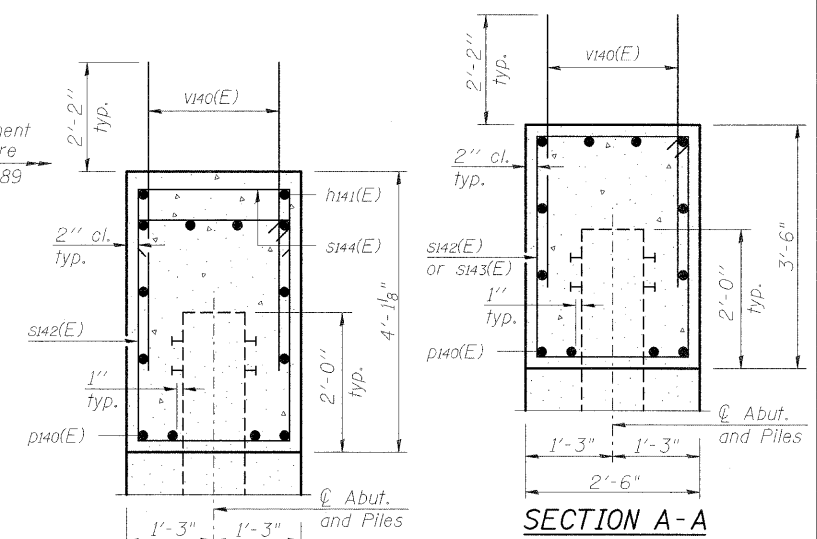
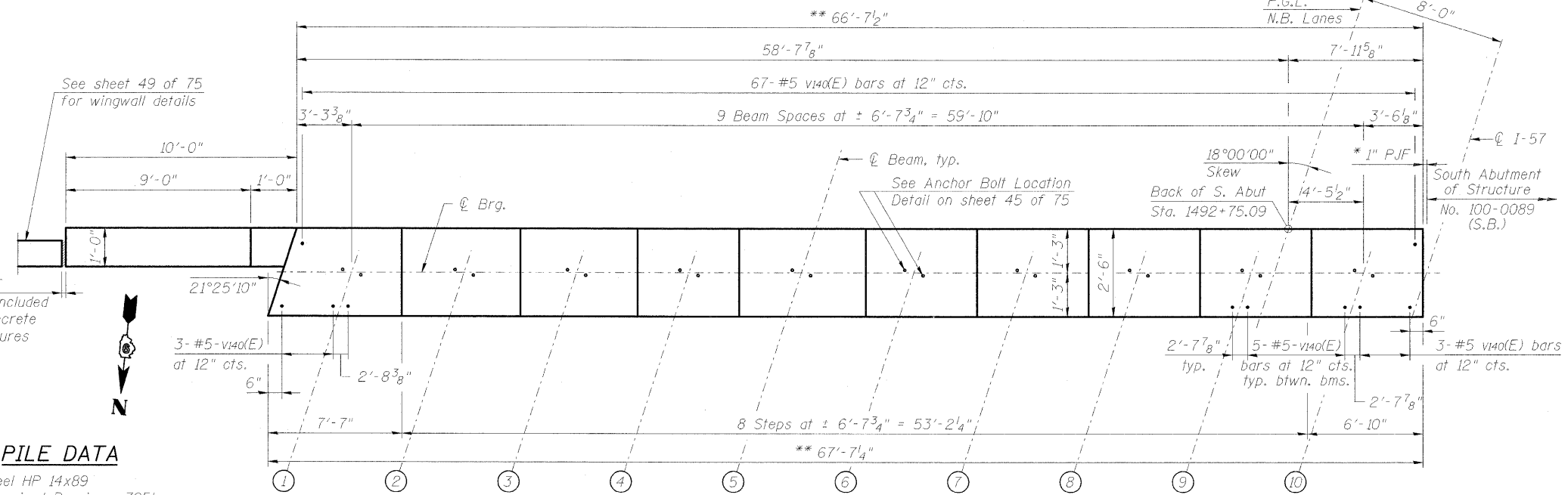


ELEVATION



SECTION B-B

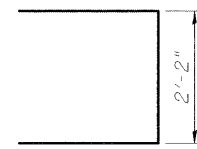
SECTION A-A



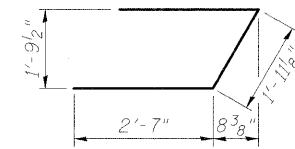
PILE DATA

Type: Steel HP 14x89
 Nominal Required Bearing: 705k
 Factored Resistance Available: 388k
 Est. Length: 55'
 No. Production Piles: 16
 No. Test Piles: 0
 Estimated Top of Rock Elevation: 415.10

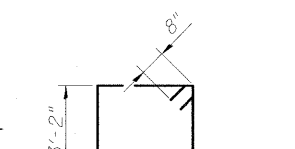
BAR u141(E)



BAR s144(E)

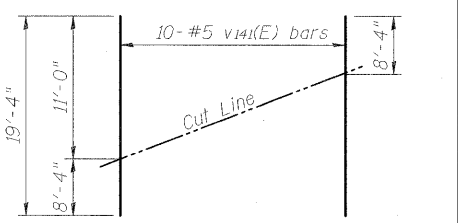


BAR u140(E)



BAR s142(E) & s143(E)

MIN. BAR LAP
 #8 Bar = 7'-8"



FIELD CUTTING DIAGRAM

Order v141(E) full length. Cut as shown and use remainder of bars in opposite face.

SOUTH ABUTMENT (N.B.) BILL OF MATERIAL

Bar	No.	Size	Length	Shape
h140(E)	32	#7	13'-8"	—
h141(E)	2	#4	26'-4"	—
h142(E)	12	#6	13'-8"	—
p140(E)	24	#8	37'-5"	—
s142(E)	79	#6	12'-0"	□
s143(E)	1	#6	12'-4"	□
s144(E)	27	#4	4'-2"	□
u140(E)	4	#6	7'-2"	—
u141(E)	4	#6	7'-0"	—
v140(E)	118	#5	4'-4"	—
v141(E)	10	#5	19'-4"	—
Structure Excavation			Cu. Yd.	51
Concrete Structures			Cu. Yd.	27.6
Concrete Encasement			Cu. Yd.	8.8
Reinforcement Bars, Epoxy Coated			Pound	5,920
Furnishing Steel Piles HP14x89			Foot	880
Driving Piles			Foot	880
Test Pile Steel HP14x89			Each	0

Notes:
 Four steps monolithically with cap.
 Space reinforcement to miss anchor bolts.
 See Sheet 2 of 75 for abutment backfill requirements.
 See Sheet 66 of 75 for steel H-pile and Concrete Encasement details.



FILE NAME = ...\\57-039.SOUTH ABUT.NB.dgn	USER NAME = Rob Heady	DESIGNED - JDJ	REVISIONS -
PLOT SCALE =	PLOT DATE = 10/7/2011	CHECKED - REB	REVISIONS -
		DRAWN - GLD	REVISIONS -
		CHECKED - REB	REVISIONS -

STATE OF ILLINOIS DEPARTMENT OF TRANSPORTATION

SOUTH ABUTMENT STRUCTURE NO. 100-0088 (N.B.)

SHEET NO. 48 OF 75 SHEETS

F.A.I. RTE.	SECTION	COUNTY	TOTAL SHEETS	SHEET NO.
57	(X1-6-2)HKB-2	WILLIAMSON	968	633
			CONTRACT NO. 78182	
ILLINOIS FED. AID PROJECT				