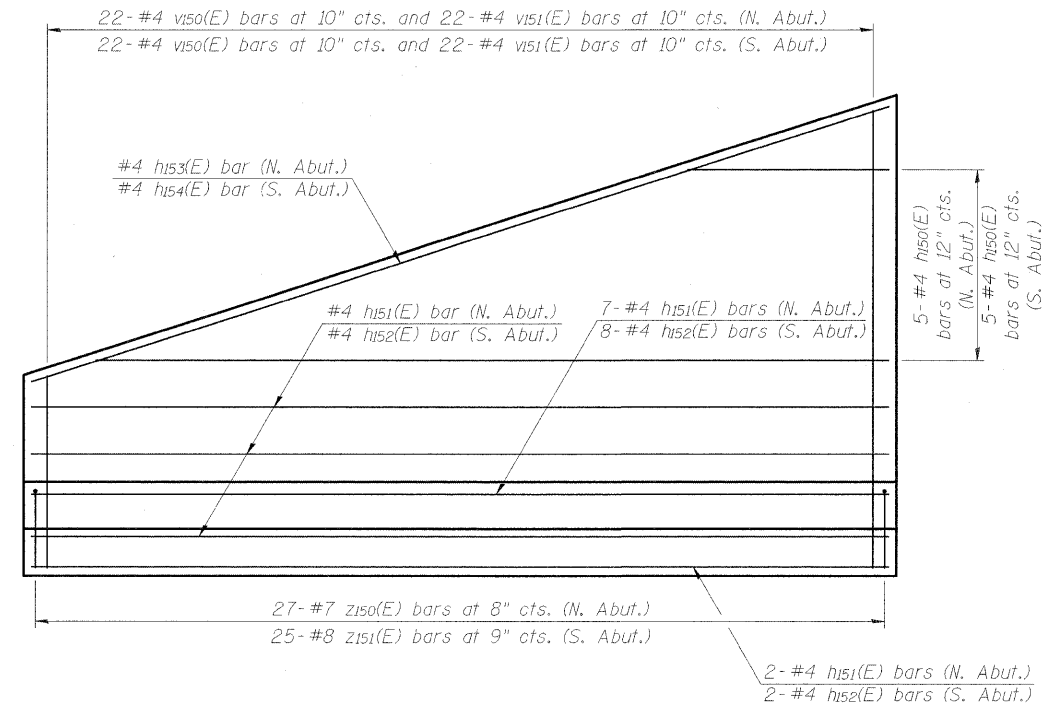


ELEVATION
(Looking South)

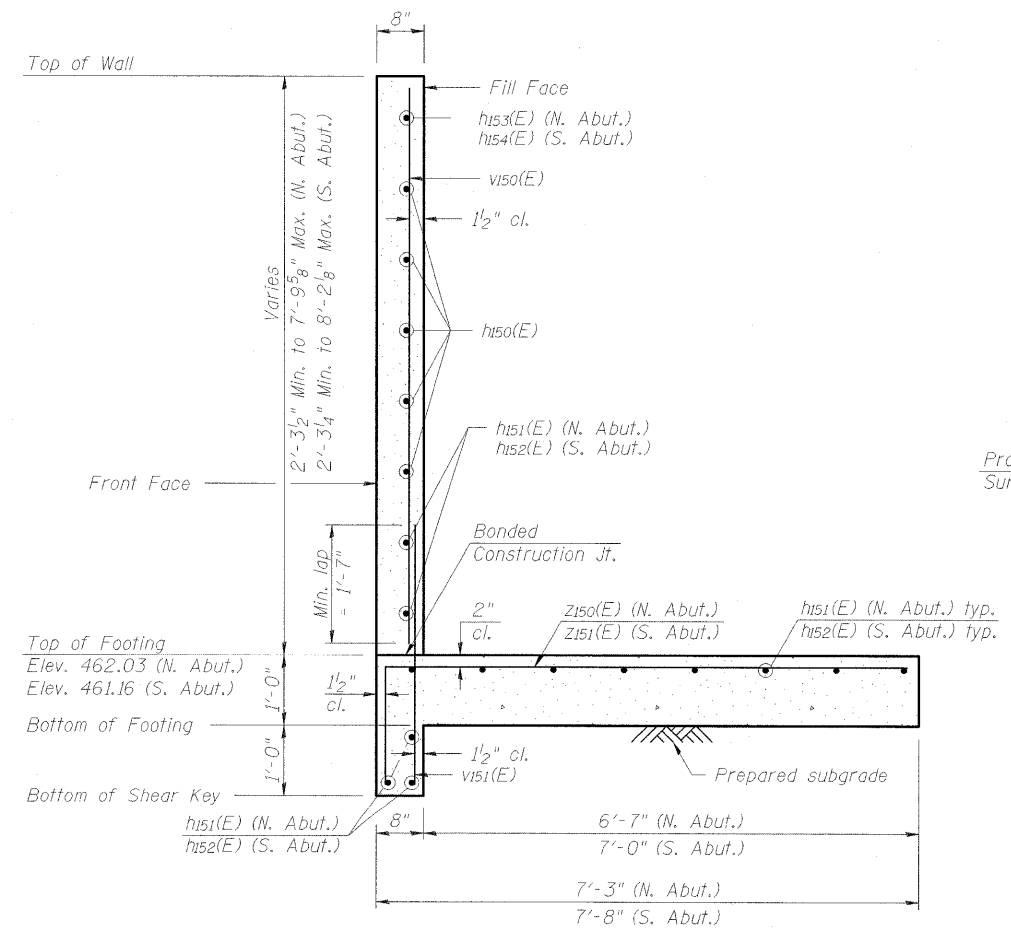


ELEVATION SHOWING REINFORCEMENT
(Looking South)

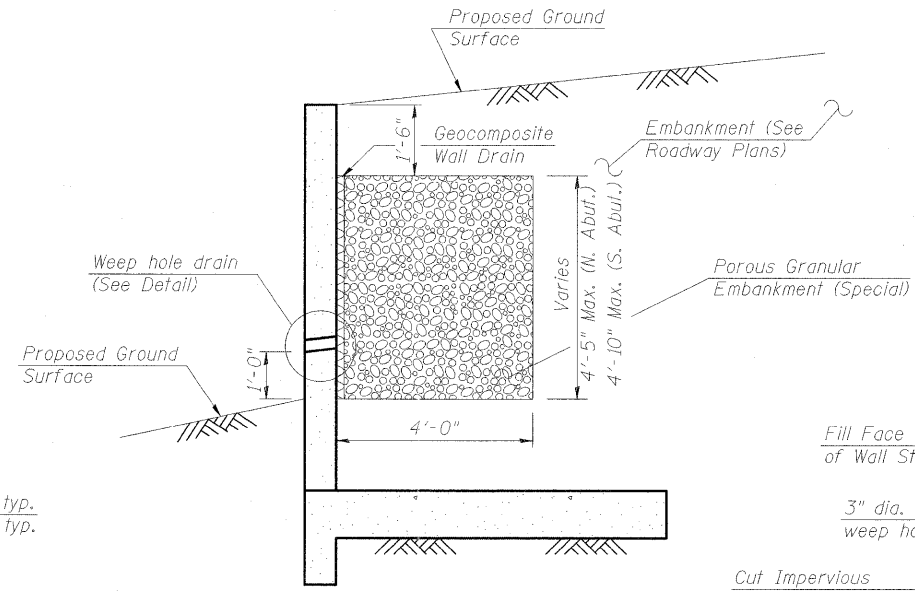
Maximum allowable soil pressure on prepared subgrade = 2000 psf.

**WINGWALLS (N.B.)
BILL OF MATERIAL**

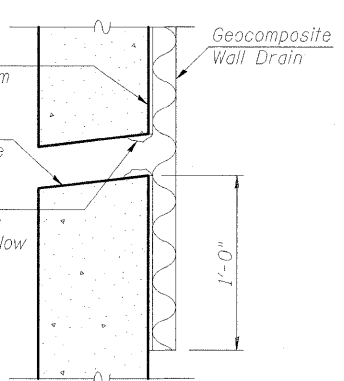
Bar	No.	Size	Length	Shape	
v150(E)	22	#4	9'-8"	—	
v151(E)	44	#4	3'-8"	—	
h150(E)	5	#4	20'-11"	—	
h151(E)	12	#4	17'-8"	—	
h152(E)	13	#4	18'-2"	—	
h153(E)	1	#4	18'-5"	—	
h154(E)	1	#4	19'-0"	—	
z150(E)	27	#7	8'-7"	—	
z151(E)	25	#8	9'-0"	—	
Concrete Structures				Cu. Yd.	15.7
Reinforcement Bars, Epoxy Coated				Pound	1,720
Porous Granular Embankment, Special				Cu. Yd.	11



SECTION THRU WALL

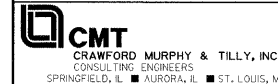


WEEP HOLE DRAIN DETAILS



FIELD CUTTING DIAGRAM

Order bars full length. Cut as shown and use remainder of bars in south abutment.



FILE NAME = ...1-57-041A.WINGWALLS.NB.dgn
USER NAME = Rob Heady
DESIGNED - JDJ
CHECKED - REB
DRAWN - GLD
PLOT DATE = 10/7/2011

DESIGNED - JDJ
CHECKED - REB
DRAWN - GLD
PLOT DATE = 10/7/2011

STATE OF ILLINOIS
DEPARTMENT OF TRANSPORTATION

WINGWALLS
STRUCTURE NO. 100-0088 (N.B.)
SHEET NO. 49 OF 75 SHEETS

F.A.I. RTE.	SECTION	COUNTY	TOTAL SHEETS	SHEET NO.
57	(X1-6-2)HBK-2	WILLIAMSON	968	634
				CONTRACT NO. 78182

ILLINOIS FED. AID PROJECT