

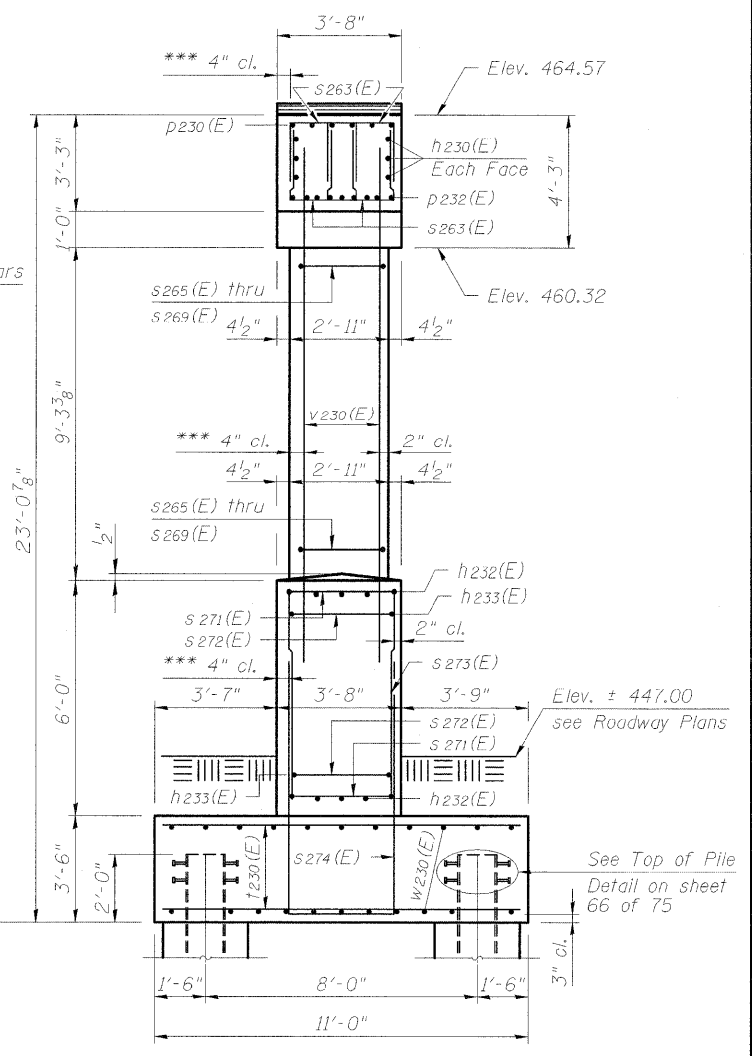
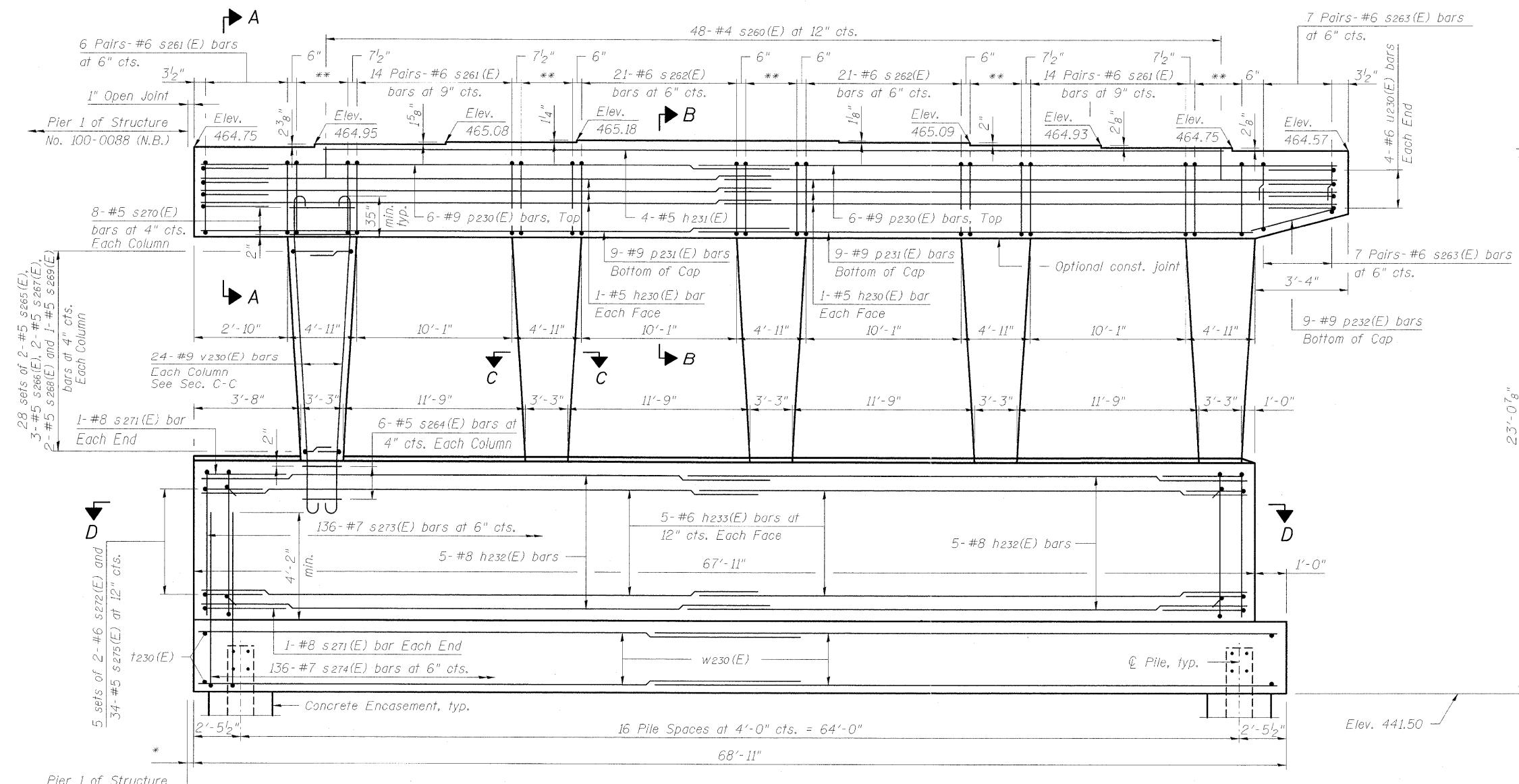
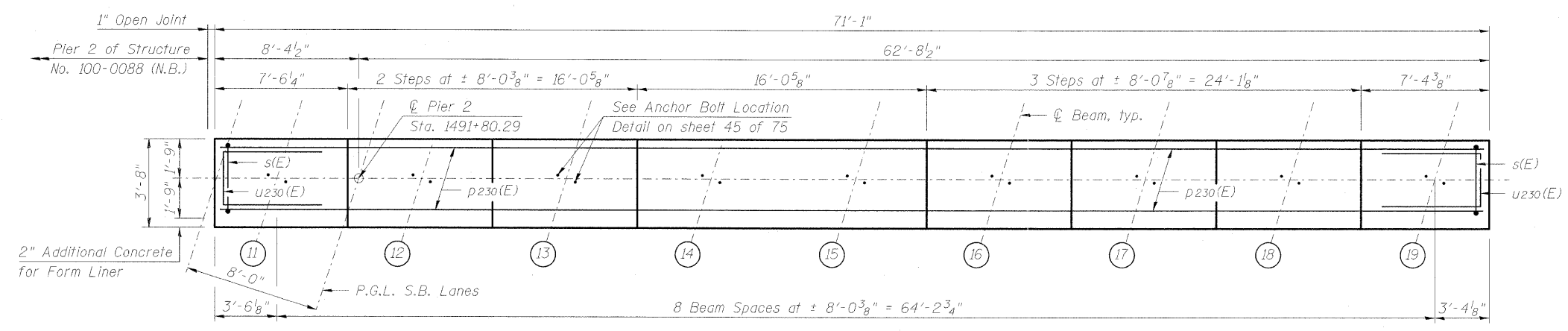
Notes:
 Space reinforcement in cap to miss anchor bolts.
 Pour steps monolithically with cap.
 For details of piles and Concrete Encasement, see sheet 66 of 75.
 For Bar Details, Bill of Material, Footing Plan, Sections A-A, B-B, C-C and D-D, see sheet 60 of 75.
 For Aesthetic Treatment Details, see sheets 61 thru 63 of 75.
 All surfaces of pier above proposed ground line shall be treated with concrete sealer.

PILE DATA

Type: Steel HP 14x89
 Nominal Required Bearing: 700k
 Factored Resistance Available: 385k
 Est. Length: 30'
 No. Production Piles: 34
 No. Test Piles: 0
 Estimated Top of Rock Elevation: 415.10

MIN. BAR LAP

#5 Bar = 3'-8"
 #6 Bar = 4'-5"
 #8 Bar = 7'-8"
 #9 Bar = 9'-8"



* 1" P.J.F. between structures, Cost included in Concrete Structures.
 ** 5-#6 s262(E) at 12" cts.
 *** 2" Additional Concrete for Form Liner.

CMT
 CRAWFORD MURPHY & TILLY, INC.
 CONSULTING ENGINEERS
 SPRINGFIELD, ILL. ■ AURORA, ILL. ■ ST. LOUIS, MO
 ROCKFORD, ILL. ■ PEORIA, ILL. ■ CHICAGO, ILL.

FILE NAME = ...1-57-047.PIER 2.SB.dgn	USER NAME = Rob Heady	DESIGNED - JDJ	REVISD -
		CHECKED - REB	REVISD -
		DRAWN - GLD	REVISD -
		CHECKED - REB	REVISD -

STATE OF ILLINOIS
DEPARTMENT OF TRANSPORTATION

PIER 2
STRUCTURE NO. 100-0089 (S.B.)
 SHEET NO. 59 OF 75 SHEETS

F.A.I. RTE.	SECTION	COUNTY	TOTAL SHEETS	SHEET NO.
57	(X1-6-2)HKB-2	WILLIAMSON	968	644
			CONTRACT NO. 78182	

ILLINOIS FED. AID PROJECT