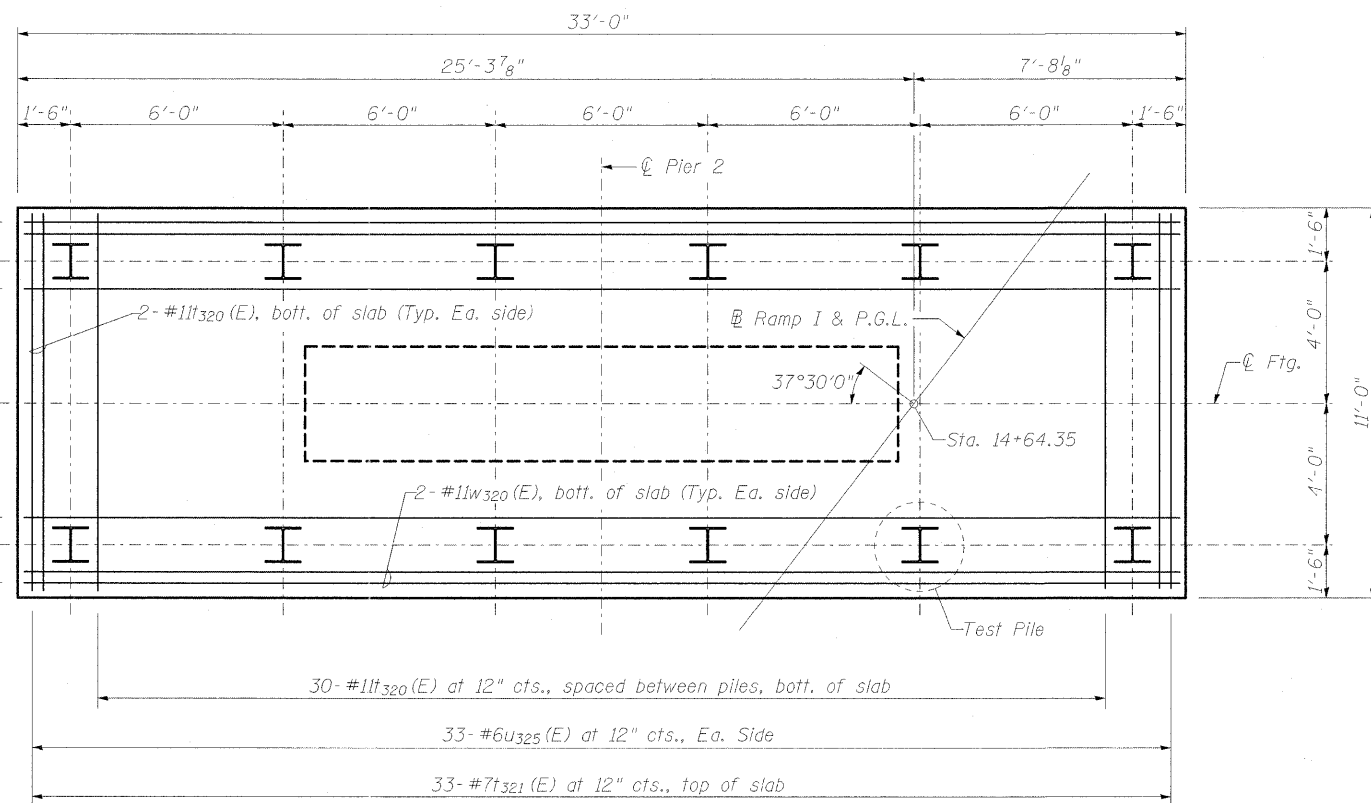
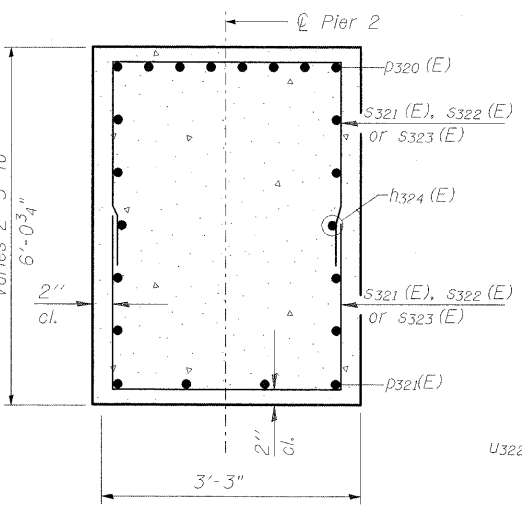


**PIER 2
BILL OF MATERIAL**

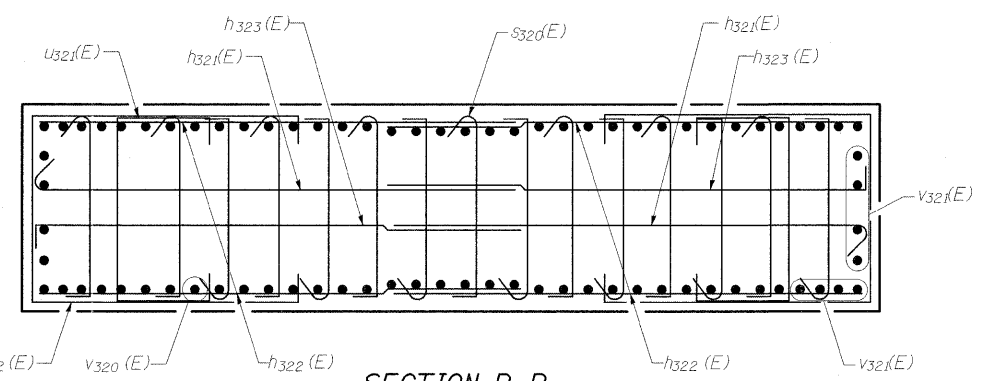
Bar	No.	Size	Length	Shape
h320 (E)	34	#5	19'-8"	—
h321 (E)	92	#5	10'-7"	└
h322 (E)	36	#5	9'-8"	—
h323 (E)	92	#5	10'-7"	└
h324 (E)	12	#5	33'-2"	—
h325 (E)	4	#5	20'-2"	—
h326 (E)	4	#5	5'-1"	—
n320 (E)	54	#10	11'-8"	└
n321 (E)	24	#10	9'-8"	└
p320 (E)	8	#11	33'-2"	—
p321 (E)	8	#5	10'-3"	—
s320 (E)	654	#5	3'-11"	└
s321 (E)	24	#5	10'-5"	└
s322 (E)	12	#5	9'-1"	└
s323 (E)	8	#5	8'-6"	└
s324 (E)	2	#5	11'-9"	└
s325 (E)	2	#5	11'-5"	└
s326 (E)	2	#5	10'-11"	└
s327 (E)	2	#5	10'-7"	└
s328 (E)	14	#5	16'-5"	└
t320 (E)	34	#11	10'-6"	—
t321 (E)	33	#7	10'-6"	—
t322 (E)	12	#5	10'-6"	—
u320 (E)	68	#5	8'-1"	└
u321 (E)	86	#5	6'-11"	└
u322 (E)	18	#5	15'-11"	└
u323 (E)	21	#5	6'-11"	└
u324 (E)	6	#6	8'-9"	└
u325 (E)	88	#6	8'-8"	└
v320 (E)	54	#10	11'-4"	—
v321 (E)	24	#10	13'-4"	—
w320 (E)	12	#11	32'-6"	—
w321 (E)	11	#7	32'-6"	—
w322 (E)	12	#5	32'-6"	—
Structure Excavation		Cu. Yd.		164
Concrete Structures		Cu. Yd.		116.9
Reinforcement Bars, Epoxy Coated		Pound		25,100
Furnishing Steel Piles, HP 12x53		Foot		165
Driving Piles		Foot		165
Test Pile Steel HP 12x53		Each		1
Mechanical Splicers		Each		146
Concrete Sealer		Each		557



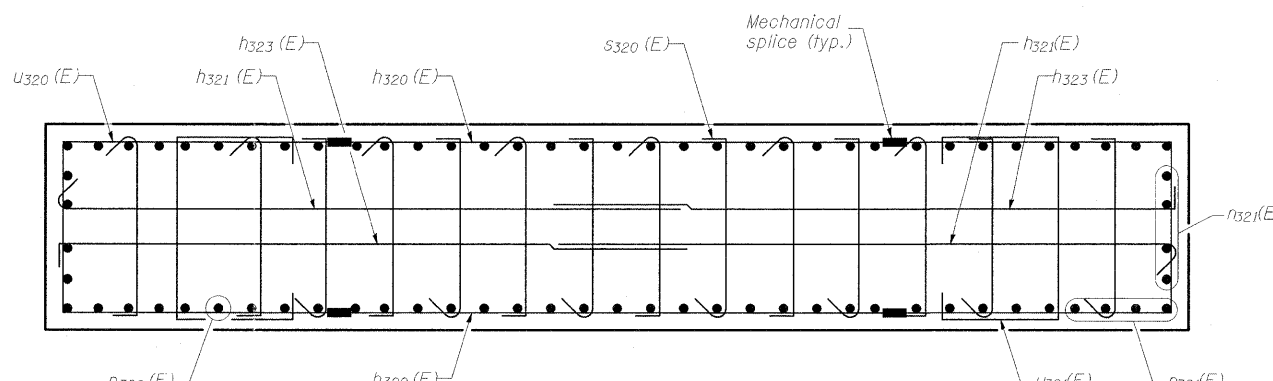
FOOTING PLAN



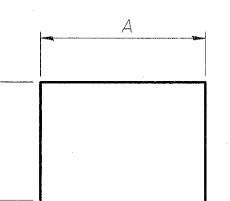
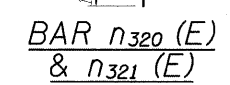
SECTION A-A



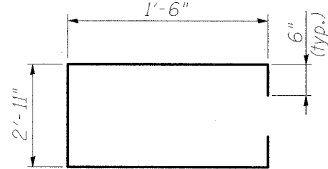
SECTION B-B



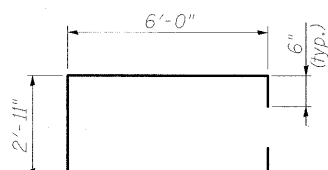
SECTION C-C



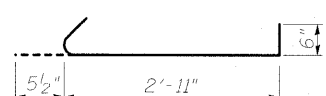
BAR U320 (E)



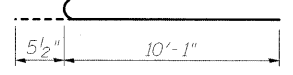
BAR U321 (E)



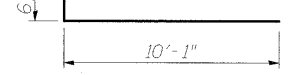
BAR U321 (E)



BAR s320 (E)



BAR h321 (E)

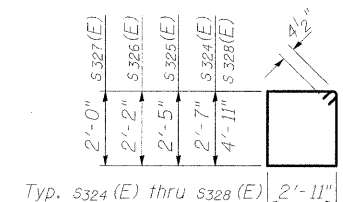


BAR h323 (E)

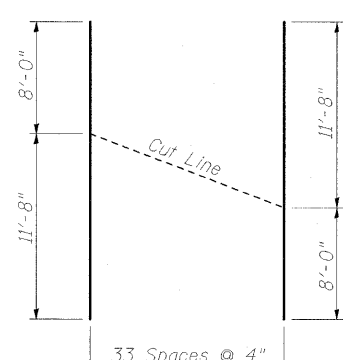
**BAR U323(E), U324(E), U325(E)
S321(E), S322(E) & S323(E)**

A & B DIMENSIONS

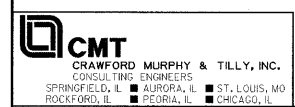
Bar	A	B
s321 (E)	2'-11"	3'-9"
s322 (E)	2'-11"	3'-1"
s323 (E)	2'-11"	2'-9 1/2"
u323 (E)	2'-11"	2'-0"
u324 (E)	2'-9"	3'-0"
u325 (E)	4'-8"	2'-0"



BARS s324 (E) thru s328 (E)



**CUTTING DIAGRAM
BAR h320 (E)**



FILE NAME = ...ramp 1\PIER 2.017A.dgn
USER NAME = Rob Heady
DESIGNED - BPD
CHECKED - REB
DRAWN - GLD
PLOT DATE = 10/7/2011

DESIGNED - BPD
CHECKED - REB
DRAWN - GLD
PLOT DATE = 10/7/2011
CHECKED - BPD
REVISED -
REVISED -
REVISED -
REVISED -

**STATE OF ILLINOIS
DEPARTMENT OF TRANSPORTATION**

**PIER 2 DETAILS
STRUCTURE NO. 100-0097**
SHEET NO. 18 OF 23 SHEETS

F.A. RTE.	SECTION	COUNTY	TOTAL SHEETS	SHEET NO.
*	OX1-6-2\HB-1	WILLIAMSON	968	678
* F.A.I. 57 AND F.A.P. 331 CONTRACT NO. 78182				
ILLINOIS FED. AID PROJECT				