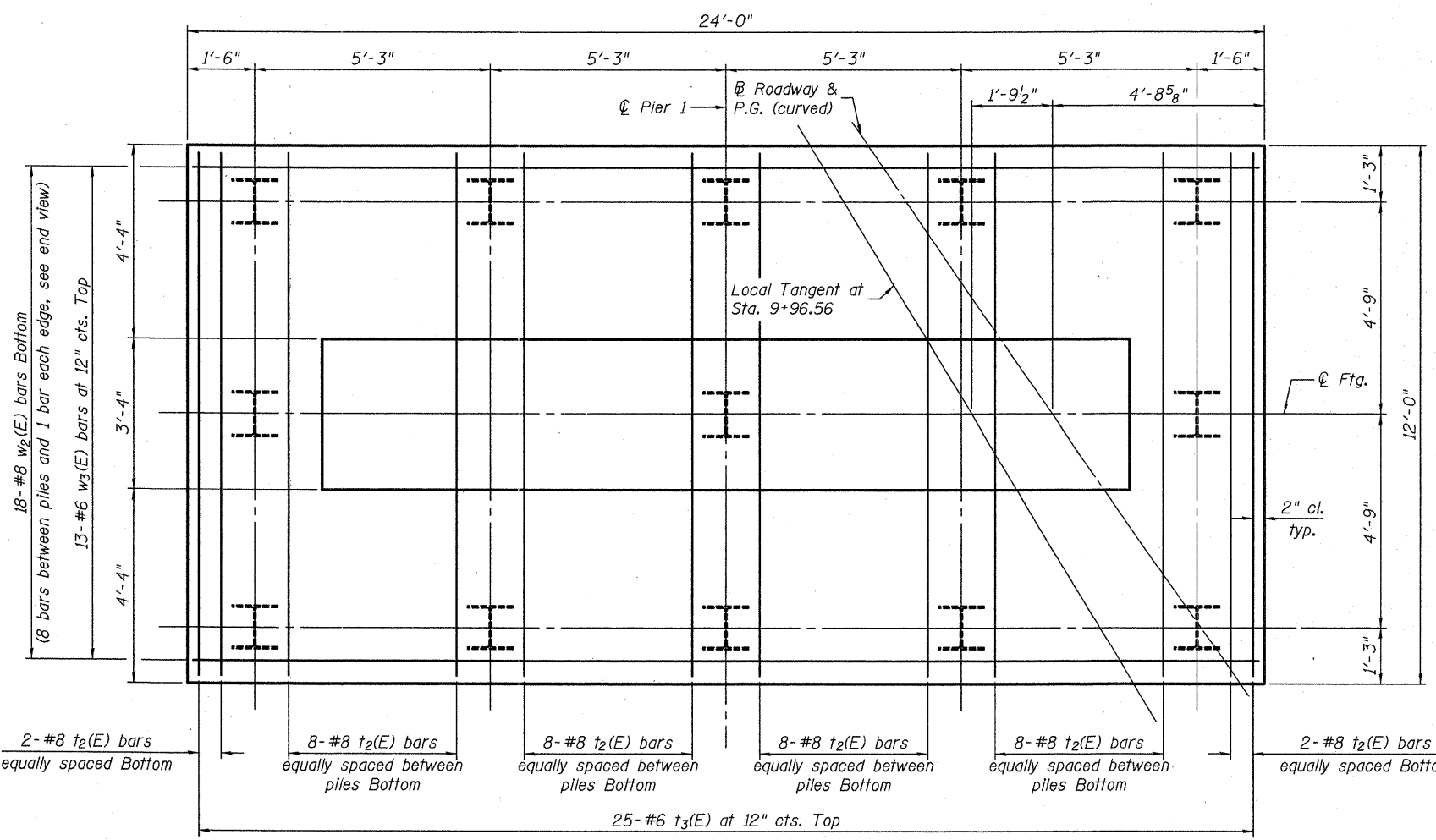
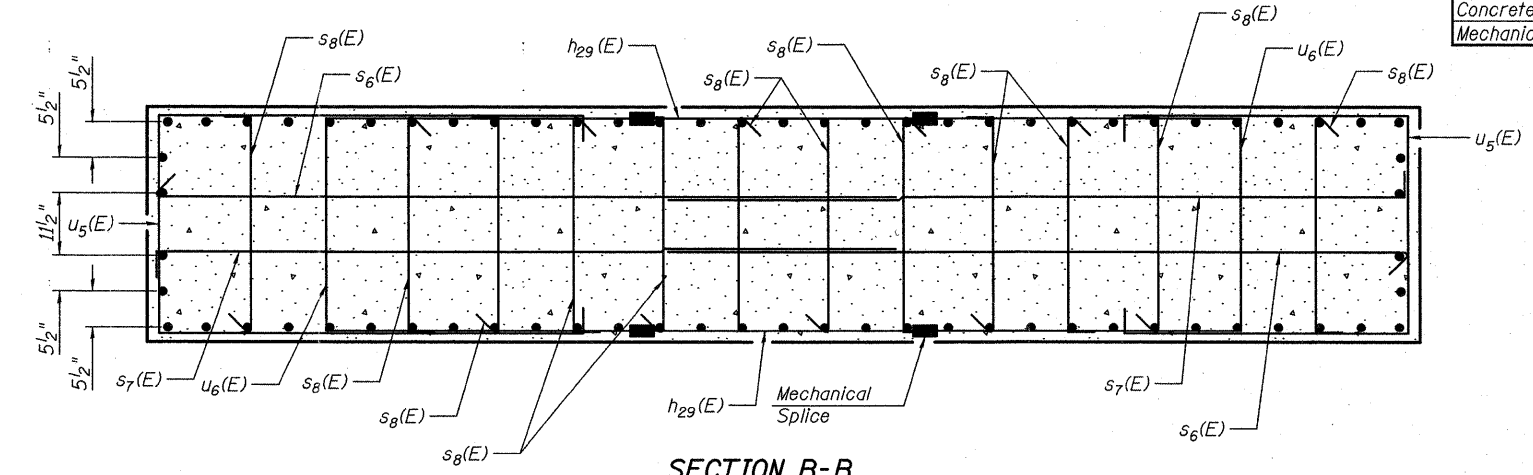


**PIER 1  
BILL OF MATERIAL**

Bar	No.	Size	Length	Shape
h <sub>24</sub> (E)	8	#5	36'-4"	
h <sub>25</sub> (E)	4	#5	29'-6"	
h <sub>26</sub> (E)	4	#5	21'-10"	
h <sub>27</sub> (E)	4	#5	14'-2"	
h <sub>28</sub> (E)	4	#5	6'-6"	
h <sub>29</sub> (E)	56	#5	4'-0"	
n <sub>8</sub> (E)	34	#10	7'-6"	
n <sub>9</sub> (E)	36	#10	9'-6"	
p <sub>8</sub> (E)	10	#10	36'-4"	
p <sub>9</sub> (E)	10	#8	15'-1"	
s <sub>6</sub> (E)	78	#5	11'-1"	
s <sub>7</sub> (E)	78	#5	11'-2"	
s <sub>8</sub> (E)	456	#5	3'-11"	
s <sub>9</sub> (E)	24	#6	6'-10"	
s <sub>10</sub> (E)	56	#6	7'-6"	
s <sub>11</sub> (E)	96	#6	8'-11"	
s <sub>12</sub> (E)	15	#5	16'-3"	
s <sub>13</sub> (E)	30	#5	11'-10"	
t <sub>2</sub> (E)	36	#8	11'-8"	
t <sub>3</sub> (E)	25	#6	11'-8"	
u <sub>4</sub> (E)	11	#6	8'-2"	
u <sub>5</sub> (E)	78	#5	16'-0"	
u <sub>6</sub> (E)	56	#5	12'-0"	
u <sub>7</sub> (E)	11	#5	33'-0"	
v <sub>4</sub> (E)	34	#10	15'-6"	
v <sub>5</sub> (E)	36	#10	13'-6"	
w <sub>2</sub> (E)	18	#8	23'-8"	
w <sub>3</sub> (E)	13	#6	23'-8"	
Structure Excavation	Cu. Yd.		67	
Concrete Structures	Cu. Yd.		86.6	
Reinforcement Bars, Epoxy Coated	Pound		21,870	
Furnishing Steel Piles HP12x53	Foot		228	
Driving Piles	Foot		228	
Pile Shoes	Each		13	
Test Pile Steel HP12x53	Each		1	
Concrete Sealer	Sq. Ft.		1136	
Mechanical Splicers	Each		182	



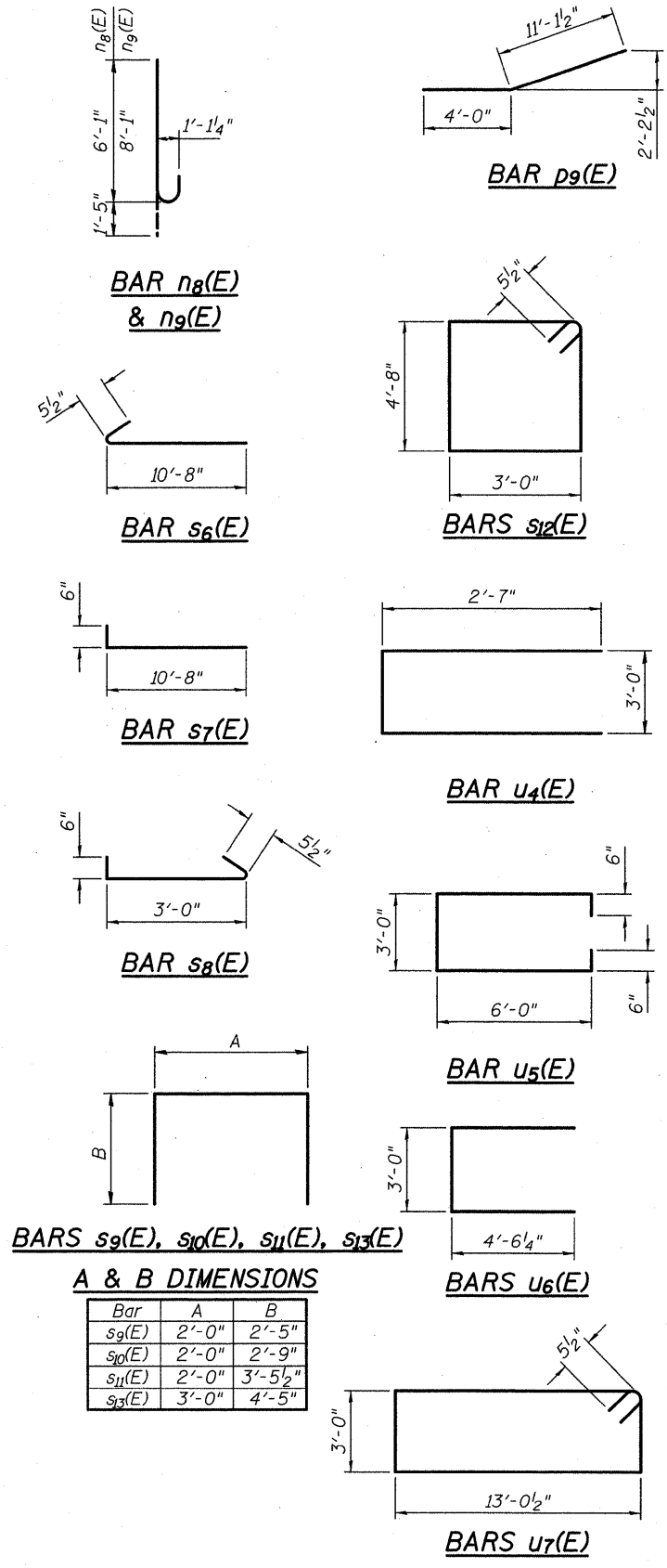
**FOOTING PLAN**



**SECTION B-B**

Note:  
Alternate orientation of s<sub>8</sub>(E) bars as shown in End View on sheet 25 of 33.

(Sheet 2 of 2)



**BARS s<sub>9</sub>(E), s<sub>10</sub>(E), s<sub>11</sub>(E), s<sub>13</sub>(E)**

**A & B DIMENSIONS**

Bar	A	B
s <sub>9</sub> (E)	2'-0"	2'-5"
s <sub>10</sub> (E)	2'-0"	2'-9"
s <sub>11</sub> (E)	2'-0"	3'-5 1/2"
s <sub>13</sub> (E)	3'-0"	4'-5"

PRINT DATE: 9/7/2011 2:15:08 PM z:\08035\_1-57 and 113\_interchange\bridge\1000098-78182-026-Pier-1 (2 of 2).dgn

**EFK Moen, LLC**  
Civil Engineering Design  
331 Salem Place, Suite 225  
Fairview Heights, IL 62208  
Phone 618-206-4250

FILE NAME = 1000098-78182-026-Pier-1 (2 of 2).dgn	USER NAME = jo	DESIGNED - CTW	REVISIONS -
PLOT SCALE = 0=1.0000 '1' / IN.	DATE = 9/7/2011	CHECKED - CDL	REVISIONS -
		DRAWN - DP	REVISIONS -
		DATE - 9/7/2011	REVISIONS -

**STATE OF ILLINOIS  
DEPARTMENT OF TRANSPORTATION**

**PIER 1  
STRUCTURE NO. 100-0098**  
SHEET NO. 26 OF 33 SHEETS

F.A.I. RTE.	SECTION	COUNTY	TOTAL SHEETS	SHEET NO.
57	(X1-6-2)HB-2	WILLIAMSON	968	709
CONTRACT NO. 78182			ILLINOIS FED. AID PROJECT	