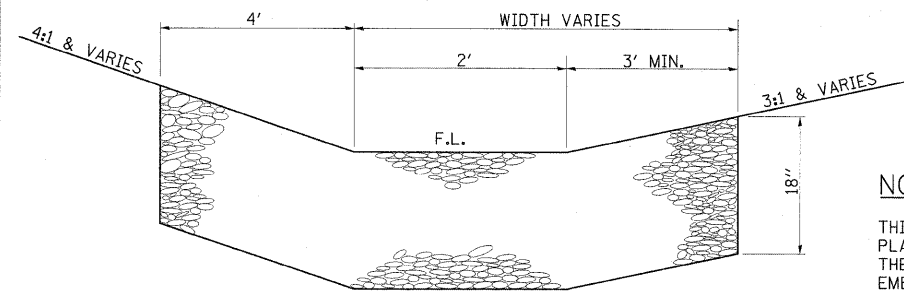
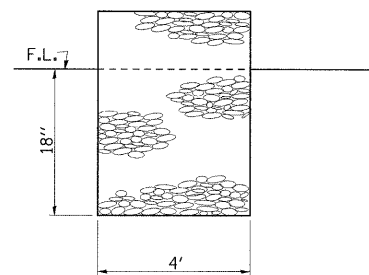


TYPICAL DETAIL OF STONE RIPRAP DITCH CHECK



FRONT VIEW



SIDE VIEW

NOTES

THIS WORK INCLUDES THE EARTH EXCAVATION REQUIRED TO PLACE THE RIPRAP AS SHOWN. THE MATERIAL RESULTING FROM THE EARTH EXCAVATION SHALL BE PLACED IN THE ROADWAY EMBANKMENT, OR WASTED AS DIRECTED BY THE ENGINEER. THE EARTHWORK SHALL BE CONSIDERED INCLUDED IN THE COST OF THE DITCH CHECKS.

THE RIPRAP DITCH CHECKS SHALL BE CONSTRUCTED AT THE LOCATIONS SHOWN IN THE PLANS OR AS DIRECTED BY THE ENGINEER. THE INTENT IS FOR THE DITCH CHECKS TO BE CONSTRUCTED ON SPACINGS OF APPROXIMATELY 150' (CENTER TO CENTER). CONSTRUCTION OF THE STONE RIPRAP DITCH

CHECKS SHALL CONFORM TO THE REQUIREMENTS FOR CLASS A4 RIPRAP AS INDICATED IN SECTION 281 OF THE STANDARD SPECIFICATIONS.

THIS WORK SHALL BE PAID FOR AT THE CONTRACT UNIT PRICE EACH FOR **STONE RIPRAP DITCH CHECKS**, WHICH PRICE SHALL INCLUDE ALL MATERIAL, LABOR AND EQUIPMENT TO COMPLETE THE WORK IN PLACE AS SHOWN.

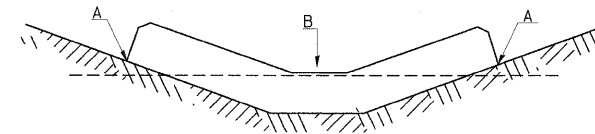
FILTER FABRIC AND BEDDING MATERIAL AS SPECIFIED IN SECTION 281 OF THE STANDARD SPECIFICATIONS WILL NOT BE REQUIRED.

REVISIONS	
REDRAWN	2-15-89
REVISED	8-15-94
RESIZED	5-8-08

STD. 9-11

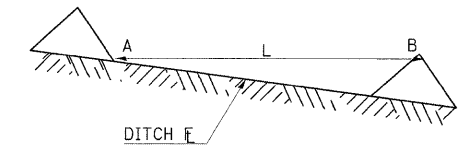
TEMPORARY DITCH CHECKS

PLACEMENT OF TEMPORARY DITCH CHECK IN DRAINAGE WAY



POINTS A SHOULD BE HIGHER THAN POINT B

SPACING BETWEEN TEMPORARY DITCH CHECKS



L = THE DISTANCE SUCH THAT POINTS A AND B ARE OF EQUAL ELEVATION

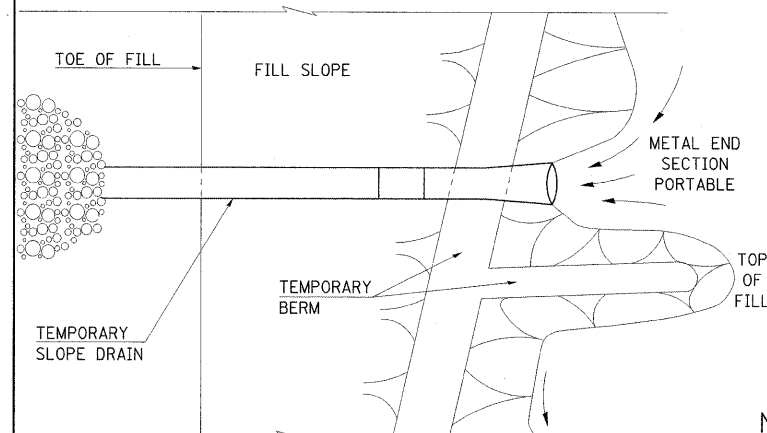
B = THE LOW POINT IN CENTER OF CHECK

REVISIONS

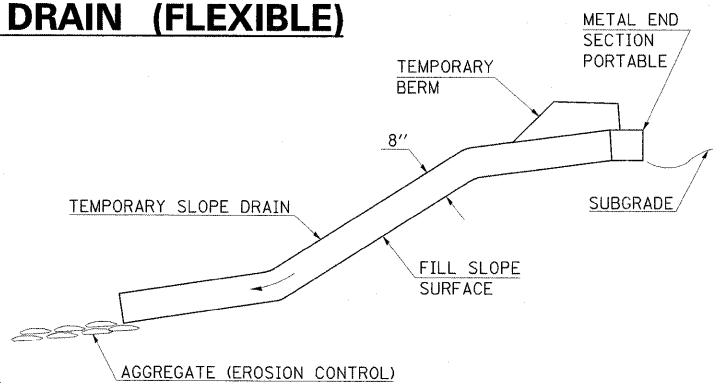
DRAWN	9-01-99
REVISED	10-3-01
RESIZED	5-8-08
REVISED	05-04-10

STD. 9-108

TEMPORARY SLOPE DRAIN (FLEXIBLE)



PLAN VIEW



END VIEW

NOTES

PIPE FOR USE AS TEMPORARY SLOPE DRAINS MAY BE EITHER A METAL OR PLASTIC CULVERT PIPE THAT CONFORMS TO SECTION 542.02 OF THE STANDARD SPECIFICATIONS AND SHALL BE PAID FOR AT THE CONTRACT UNIT PRICE PER FOOT FOR PIPE DRAINS 8" (SPECIAL). IN SOME CASES IT MAY BE NECESSARY TO SECURE PIPE TO THE FILL SLOPE TO OBTAIN PROPER ANCHORAGE. MATERIALS USED FOR THIS PURPOSE SHALL BE CONSIDERED INCLUDED IN THE COST OF THE PIPE.

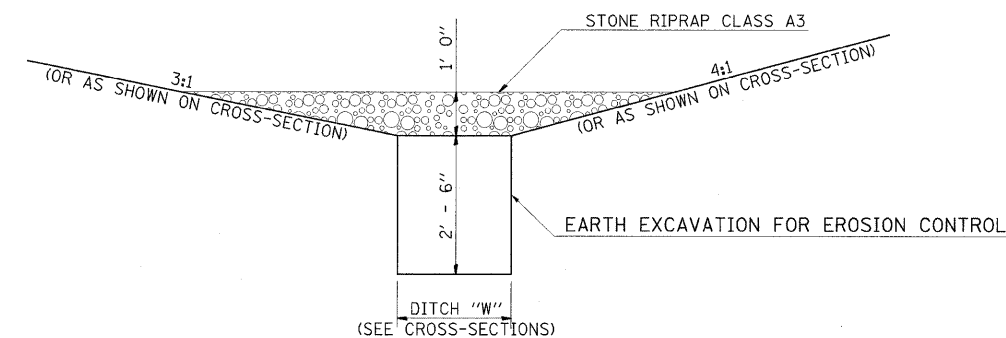
METAL END SECTIONS SHALL BE INSTALLED AT THE INLET END AND SHALL BE PAID FOR AT THE CONTRACT UNIT PRICE EACH FOR METAL END SECTIONS 8".

TEMPORARY RIPRAP AT THE OUTLET END MAY BE END DUMPED AND SHALL BE PAID FOR AT THE CONTRACT UNIT PRICE PER TON FOR AGGREGATE (EROSION CONTROL).

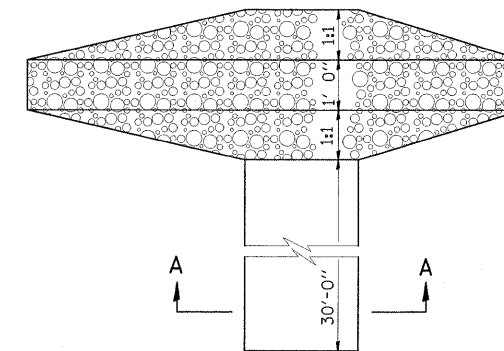
REVISIONS	
DRAWN	6-11-96
RESIZED	5-8-08

STD. 9-105

DETAIL OF TEMPORARY SEDIMENT BASIN



SECTION A-A



PLAN

NOTES

1. STONE RIPRAP CLASS A3 USED AS SHOWN WILL BE PAID FOR AS AGGREGATE (EROSION CONTROL), TON
2. THE AGGREGATE (EROSION CONTROL) MAY BE REUSED TO LINE DITCH AS DIRECTED BY THE ENGINEER AFTER ALL PERMANENT SEEDING IS IN PLACE.

STD. 9-117

REVISIONS	
DRAWN	8-09-07
RESIZED	5-8-08

FILE NAME = ...\\0978182-sht-details.dgn

USER NAME = Rob Heady

DESIGNED -

REVISED -

PLOT SCALE = 50.0000' / IN.

DRAWN -

REVISED -

PLOT DATE = 10/7/2011

CHECKED -

REVISED -

DATE = 10/07/11

REVISED -

STATE OF ILLINOIS
DEPARTMENT OF TRANSPORTATION

DISTRICT DETAILS
I-57 AND IL ROUTE 13

SCALE: N/A

SHEET NO. OF

SHEETS

STA.

TO STA.

F.A. RTE.

SECTION

COUNTY

TOTAL SHEETS

SHEET NO.

* (X1-6-2)HBK-2, HB-1,2; (IX-1)R-1

WILLIAMSON

968

722

* F.A.I. 57 AND F.A.P. 331

CONTRACT NO.

78182

ILLINOIS FED. AID PROJECT