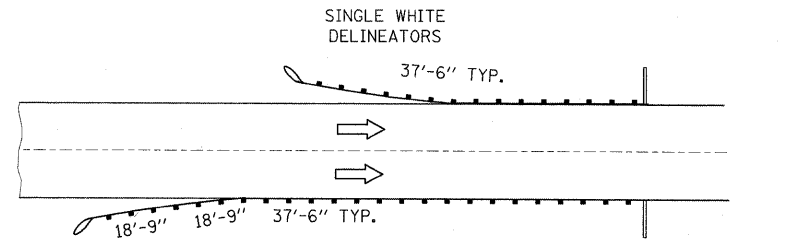
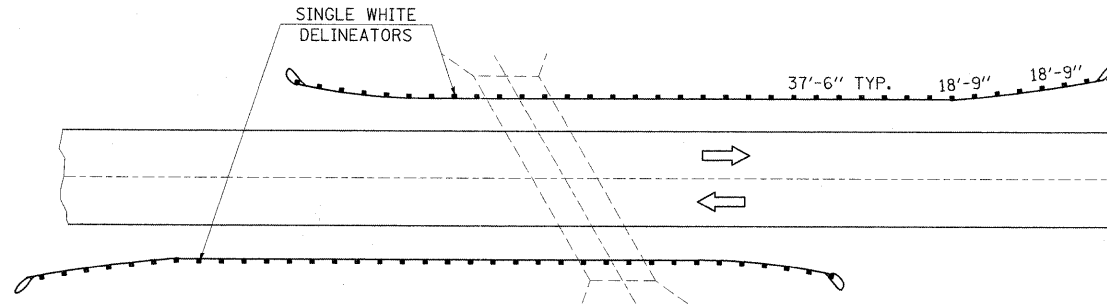


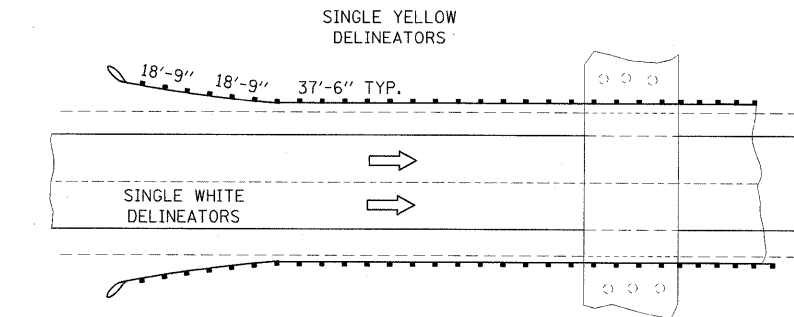
TYPICAL GUARDRAIL DELINEATION



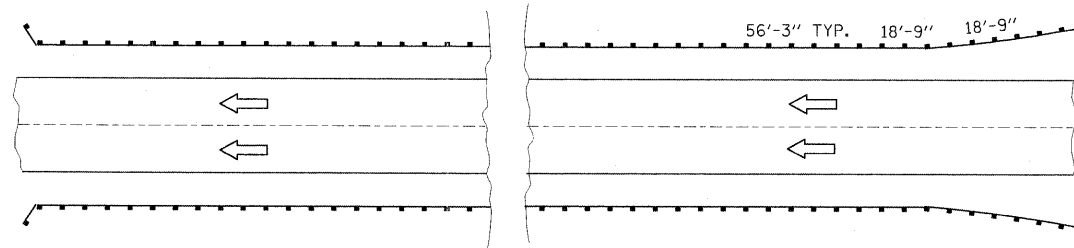
BRIDGE APPROACH INSTALLATION (TWO-WAY TRAFFIC)



ROADSIDE OBSTACLE INSTALLATION - LENGTH 250' OR LESS
(TWO WAY TRAFFIC)

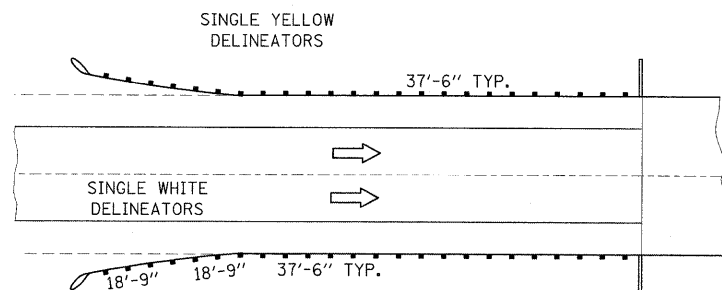


ROADSIDE OBSTACLE INSTALLATION - LENGTH 250' OR LESS
(ONE WAY TRAFFIC)

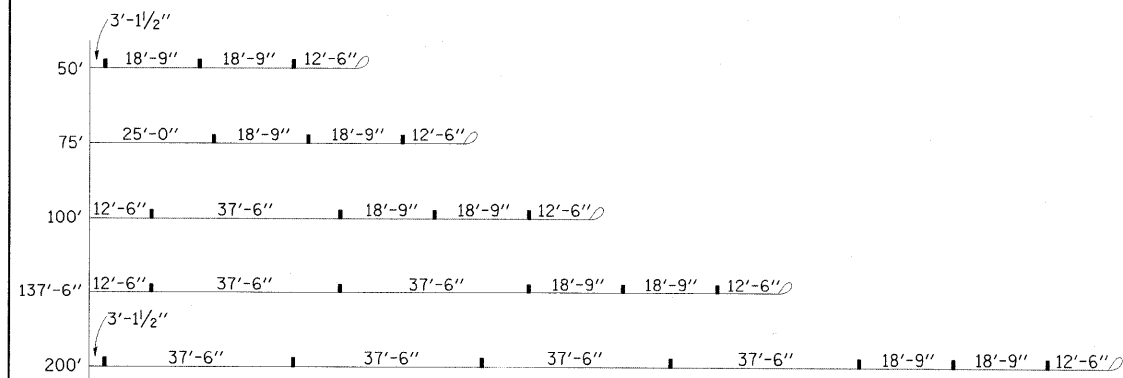


EMBANKMENT OR ROADSIDE OBSTACLE INSTALLATION-
LENGTH GREATER THAN 250'

(ONE-WAY TRAFFIC SHOWN DELINEATOR SPACING FOR TWO-TRAFFIC SIMILAR.
DELINEATOR COLOR WILL BE THE SAME AS THE ADJACENT PAVEMENT EDGE MARKING)

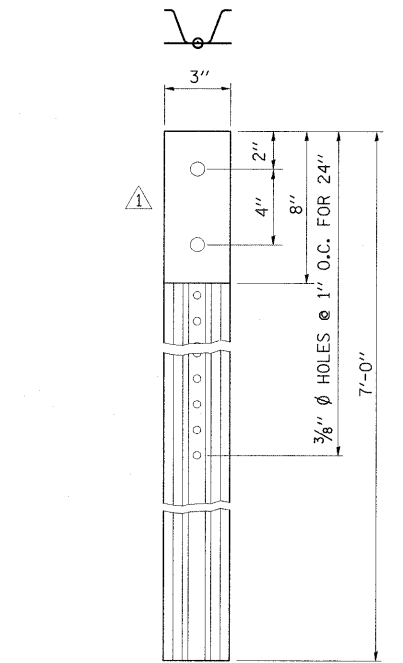


BRIDGE APPROACH INSTALLATION (ONE-WAY TRAFFIC)

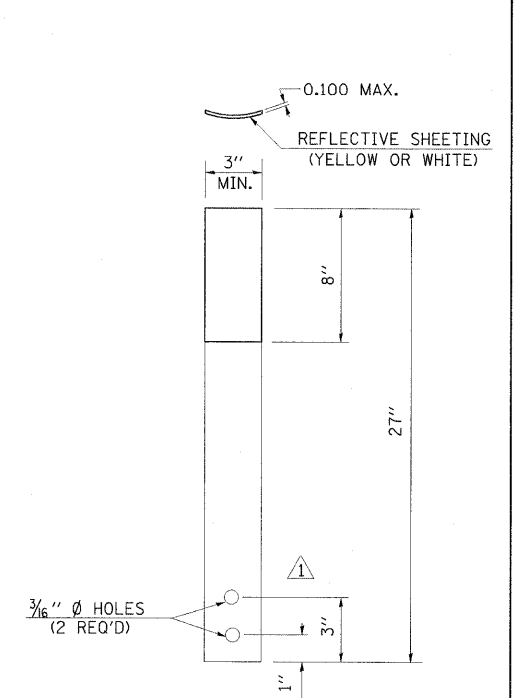


GRAPHICS SHOWING SPACING OF GUARDRAIL DELINEATORS
AT SOME COMMONLY USED BRIDGE APPROACHES

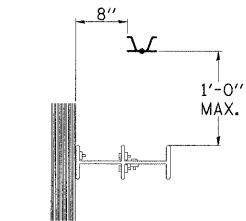
STANDARD 9-42
REVISIONS
DRAWN 5-11-97
REVISED 01-10-07
RESIZED 05-06-08



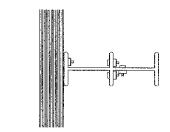
DETAIL OF A SINGLE
WHITE OR SINGLE YELLOW
DELINEATOR



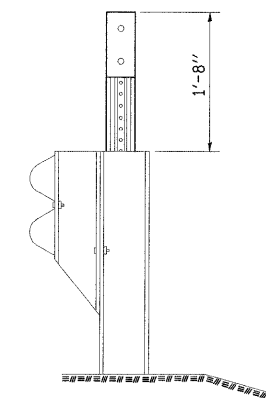
DETAIL OF FLEXIBLE
GUARDRAIL DELINEATOR



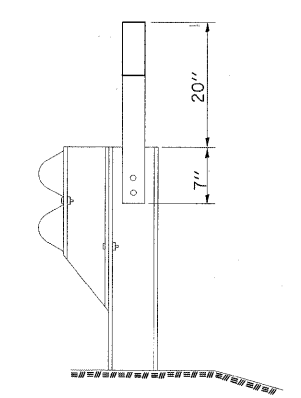
PLAN VIEW



PLAN VIEW



TYPICAL STEEL POST
GUARDRAIL DELINEATOR
INSTALLATION



TYPICAL FLEXIBLE
GUARDRAIL DELINEATOR
INSTALLATION

GENERAL NOTES

- THE UNIT PRICE OF DELINEATOR INCLUDES: COST(S) OF DELINEATOR FACE(S), POST, HARDWARE, AND INSTALLATION.
- DELINEATOR FACE WILL BE ENCAPSULATED LENS REFLECTIVE SHEETING.
- DELINEATORS ON STEEL POSTS
 - DELINEATOR FACE SHALL BE PLACED ON 0.06" SHEET ALUMINUM OR 14 GAGE GALVANIZED SHEET STEEL
 - DELINEATOR POSTS SHALL BE GALVANIZED STEEL U-SECTION POSTS (2.0 TO 2.5 LBS PER FT.). THE POSTS ARE TO BE FABRICATED BEFORE THE METAL IS GALVANIZED. RADIUS IN BENDS OF POST CROSS-SECTION NOT TO EXCEED 1/4" INCH FOR HOT ROLLED SECTION.
 - WHEN COVER OVER A DRAINAGE STRUCTURE IS LESS THAN THE NORMAL DELINEATOR POST DEPTH, THE DELINEATOR POSTS WILL BE FIELD CUT, DRILLED AND FASTENED TO THE BACK OF THE GUARDRAIL POSTS WITH (2) 1/4" LAG SCREWS.
- DELINEATORS ON FLEXIBLE POSTS
 - DELINEATOR POSTS SHALL BE WHITE IN COLOR.
 - THE DELINEATOR POSTS WILL BE SECURED TO METAL GUARDRAIL POSTS BY TWO HUCK RIVETS (PIN #CGLB-R6-7C; COLLAR #3LCW-2R6-6) OR EQUIVALENT. A 3/8" GALVANIZED FLANGED NUT WILL BE PLACED BETWEEN THE DELINEATOR POST AND GUARDRAIL POST ON EACH RIVET. HOLES IN THE STEEL GUARDRAIL POSTS SHALL BE 1/4" DIAMETER AND MAY BE SHOP FABRICATED OR FIELD DRILLED.

FILE NAME =
... \0978182-sht-details.dgn

USER NAME = Rob Heady
PLOT SCALE = 50.0000' / IN.
PLOT DATE = 10/7/2011

DESIGNED -
DRAWN -
CHECKED -
DATE - 10/07/11

REVISED -
REVISED -
REVISED -
REVISED -

STATE OF ILLINOIS
DEPARTMENT OF TRANSPORTATION

DISTRICT DETAILS
I-57 AND IL ROUTE 13

SCALE: N/A SHEET NO. OF SHEETS STA. TO STA.

F.A. RTE.	SECTION	COUNTY	TOTAL SHEETS	SHEET NO.
*	(X1-6-2)HBK-2, HB-1,2; (X-1)R-1	WILLIAMSON	968	725
* F.A.I. 57 AND F.A.P. 331			CONTRACT NO. 78182	
[ILLINOIS] FED. AID PROJECT				