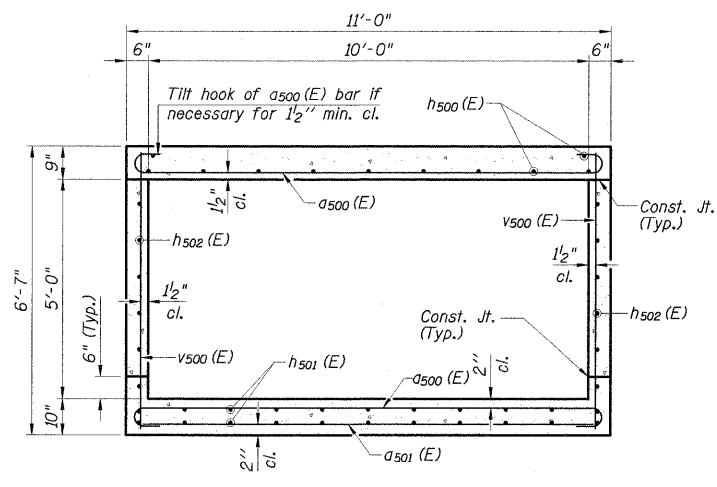


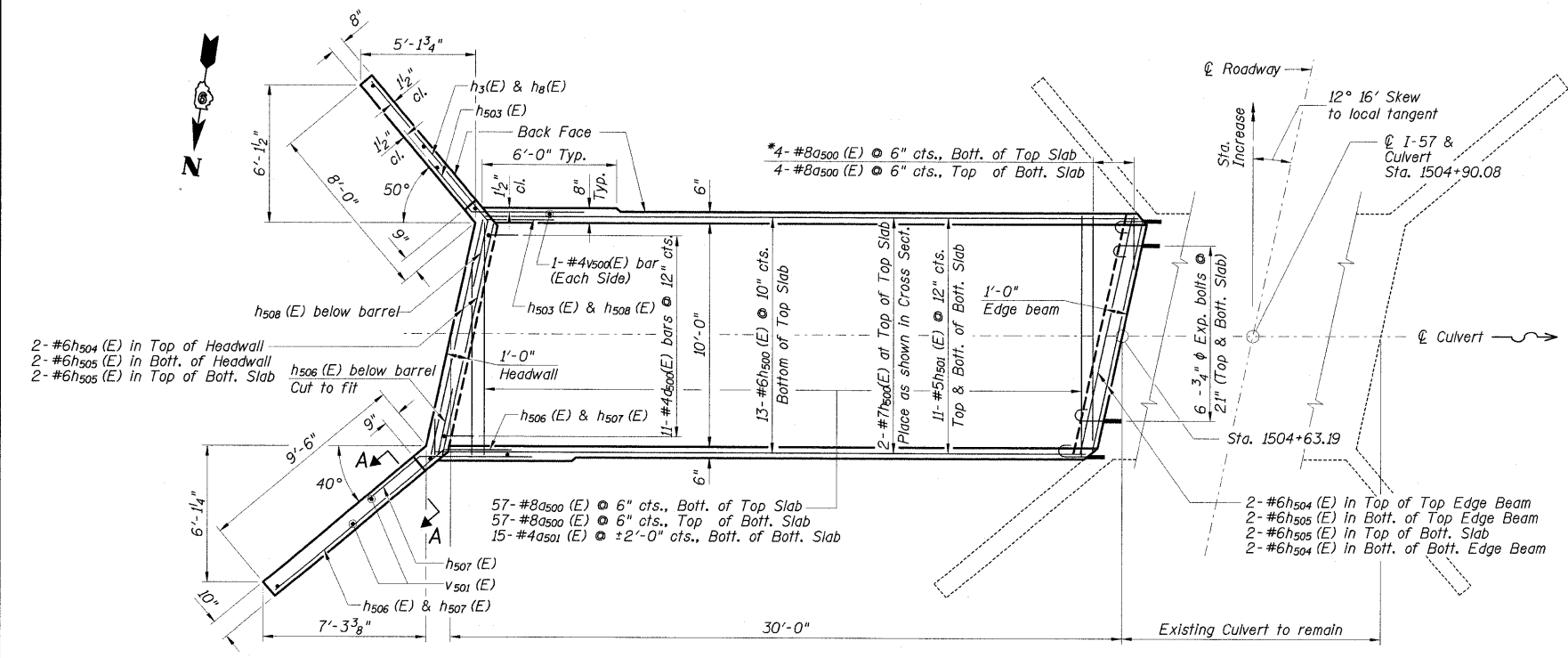
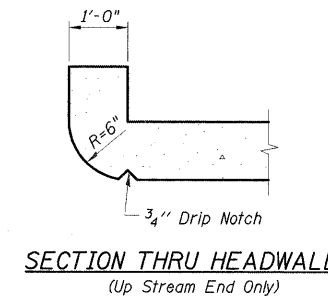
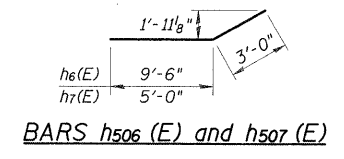
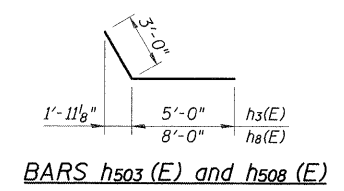
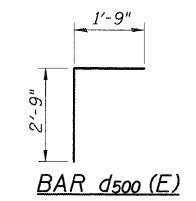
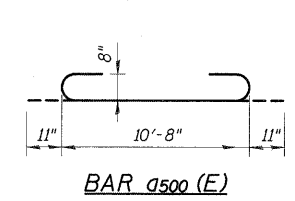
LONGITUDINAL SECTION



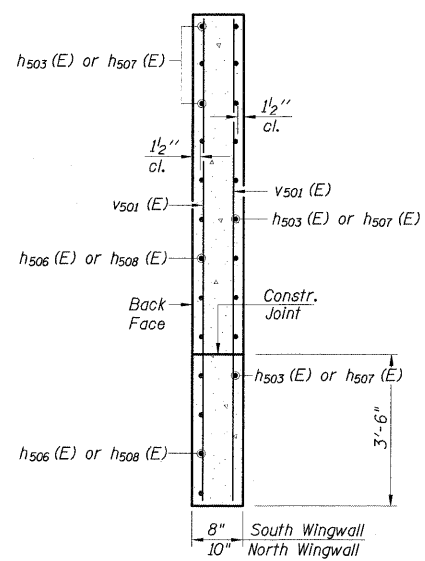
TYPICAL SECTION

**BILL OF MATERIAL**

Bar	No.	Size	Length	Shape
a500 (E)	122	#8	12'-6"	
a501 (E)	16	#4	10'-8"	
d (E)	11	#4	4'-6"	
h500 (E)	15	#6	29'-8"	
h501 (E)	22	#5	29'-8"	
h502 (E)	12	#5	29'-8"	
h503 (E)	8	#7	8'-0"	
h504 (E)	6	#6	10'-10"	
h505 (E)	8	#6	11'-0"	
h506 (E)	8	#7	12'-6"	
h507 (E)	8	#7	8'-0"	
h508 (E)	8	#7	11'-0"	
v500 (E)	84	#4	6'-3"	
v501 (E)	8	#4	9'-2"	
Concrete Box Culverts		Cu. Yd.	31.1	
Reinforcement Bars, Epoxy Coated		Pound	7,210	
Expansion Bolts 3/4" Inch		Each	18	



PLAN



- NOTES:**
1. Reinforcement bars shall conform to the requirements of ASTM A 706 Gr. 60. See Special Provisions.
  2. Reinforcement bars designated (E) shall be epoxy coated.
  3. Precast alternate is not allowed.
  4. A distance of half the length of the wingwall but not less than six feet of the barrel shall be poured monolithically with the wingwalls.
  5. All construction joints shall be bonded.
  6. Expansion bolts shall be 3/4" x 12" hooked bolts. Hooked bolts shall extend a minimum of 9" into new concrete and have a minimum certified proof load of 4,080 lbs.