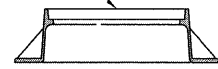
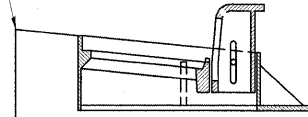


ELEVATION GIVEN IN SCHEDULE & PLANS



**TYPE 1 FRAME AND LID**

STATION, OFFSET AND ELEVATION GIVEN IN SCHEDULE & PLANS TO EDGE OF PAVEMENT



**TYPE 3 FRAME AND GRATE**

STATION AND OFFSET ARE NOT TO THE CENTER OF THE MANHOLE OR INLET.

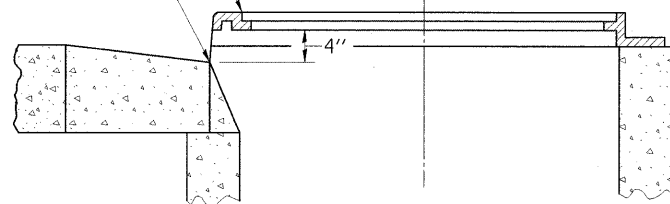
ELEVATION GIVEN IN SCHEDULE & PLANS



**TYPE 8 GRATE**

TOP OF INLET ELEVATION GIVEN IN SCHEDULE & PLANS

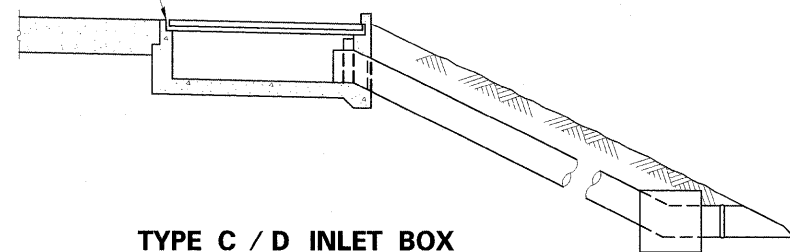
STATION, OFFSET, FLOWLINE GIVEN IN SCHEDULE & PLANS



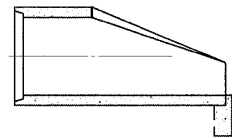
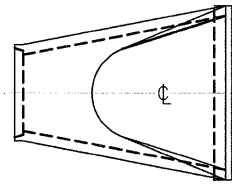
**TYPE 15 FRAME AND LID**

STATION AND OFFSET ARE NOT TO THE CENTER OF THE MANHOLE OR INLET.

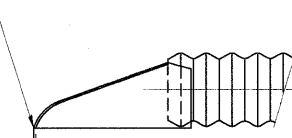
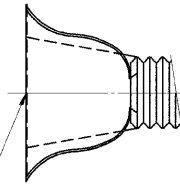
STATION, OFFSET & ELEV. GIVEN IN SCHEDULE & PLANS



**TYPE C / D INLET BOX**

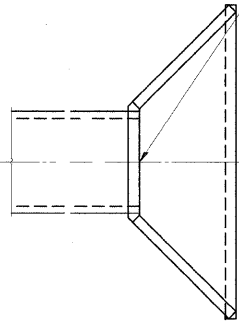
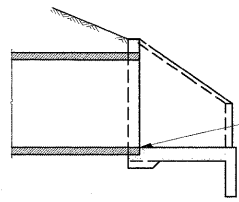


**CONC. END SECTIONS**



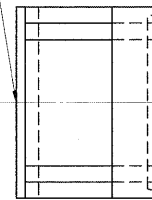
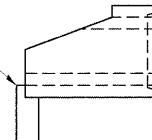
**METAL END SECTIONS**

STATION, OFFSET & INVERT GIVEN IN SCHEDULE & PLANS

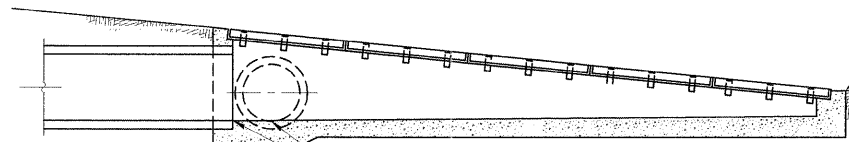


**BOX CULVERT END SECTIONS**

STATION, OFFSET & INVERT GIVEN IN SCHEDULE & PLANS

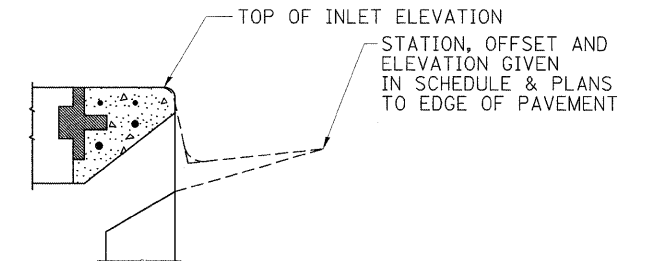
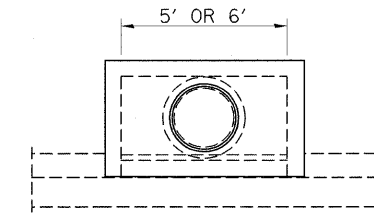


STATION, OFFSET & ELEV. GIVEN IN SCHEDULE & PLANS



INVERT ELEVATION

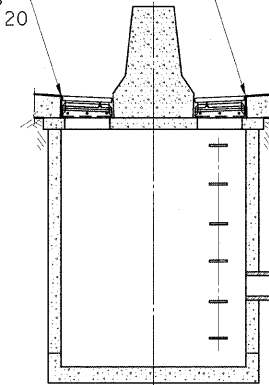
**INLET BOX STANDARD 542531 (TYPE 24 G)**



**DETAILS OF INLET, SPECIAL, NO. 1 (TYPE 3, 5 FEET AND 6 FEET)**

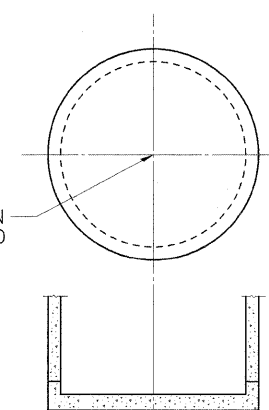
ELEVATION GIVEN IN SCHEDULE & PLANS TO EDGE OF TYPE 20 FRAME & GRATE

STATION, OFFSET GIVEN IN SCHEDULE & PLANS TO CENTER OF STRUCTURE



**DRAINAGE STRUCTURE TYPE 4 WITH TWO TYPE 20 FRAME AND GRATES**

STATION AND OFFSET GIVEN IN SCHEDULE AND PLANS TO CENTER OF STRUCTURE



**MANHOLES AND INLETS, TYPE A & B EXCEPT WHEN USED WITH TYPE 3 AND TYPE 15 CASTINGS**

FILE NAME =	USER NAME = Rob Heady	DESIGNED -	REVISED -	<b>STATE OF ILLINOIS DEPARTMENT OF TRANSPORTATION</b>	<b>DETAIL - DRAINAGE STRUCTURE REFERENCE POINTS I-57 AND IL ROUTE 13</b>				F.A. RTE.	SECTION	COUNTY	TOTAL SHEETS	SHEET NO.
...ND979182-sht-Det010-Drain_Struct.Ref.dgn		DRAWN -	REVISED -		SCALE: N.T.S.	SHEET NO.	OF	SHEETS	STA.	TO STA.	WILLIAMSON	968	736
		CHECKED -	REVISED -								F.A.I. 57 AND F.A.P. 331		
		DATE - 10/07/11	REVISED -								ILLINOIS FED. AID PROJECT		