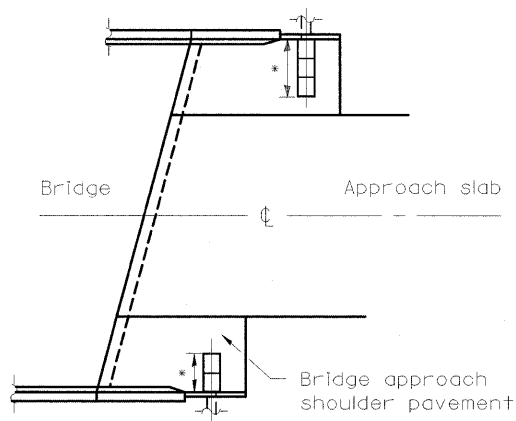
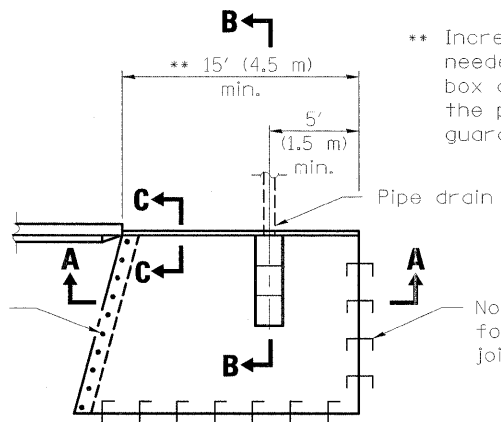


* Type C or D inlet box as required.



GENERAL PLAN

Tie bars at 12 (300) cts. (by Bridge Contractor)

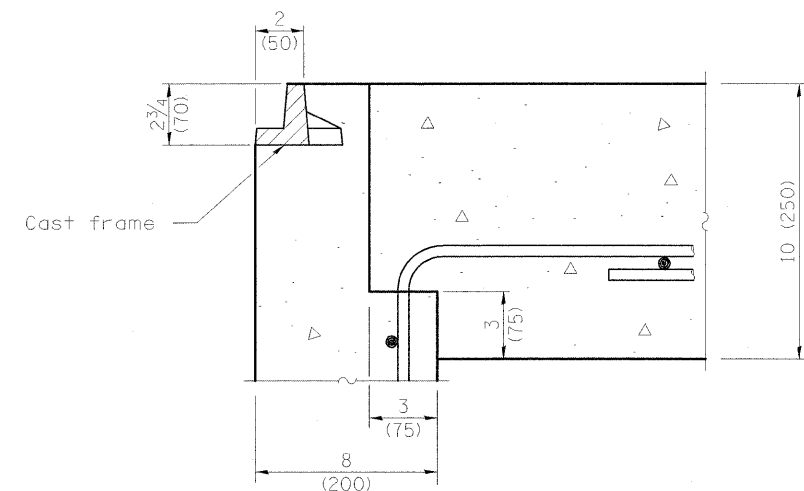


TYPICAL DETAIL PLAN

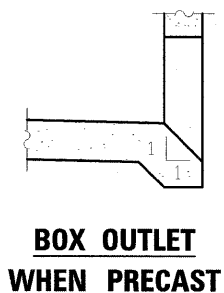
(W/O Wingwall)

** Increase this dimension as needed to position the inlet box and pipe drain between the proposed approach guard rail posts.

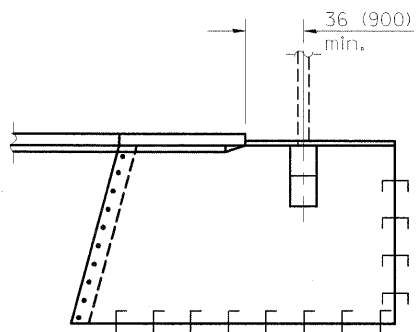
No. 6 (No. 19) tie bars as detailed for longitudinal construction joint on Standard 420001



DETAIL A



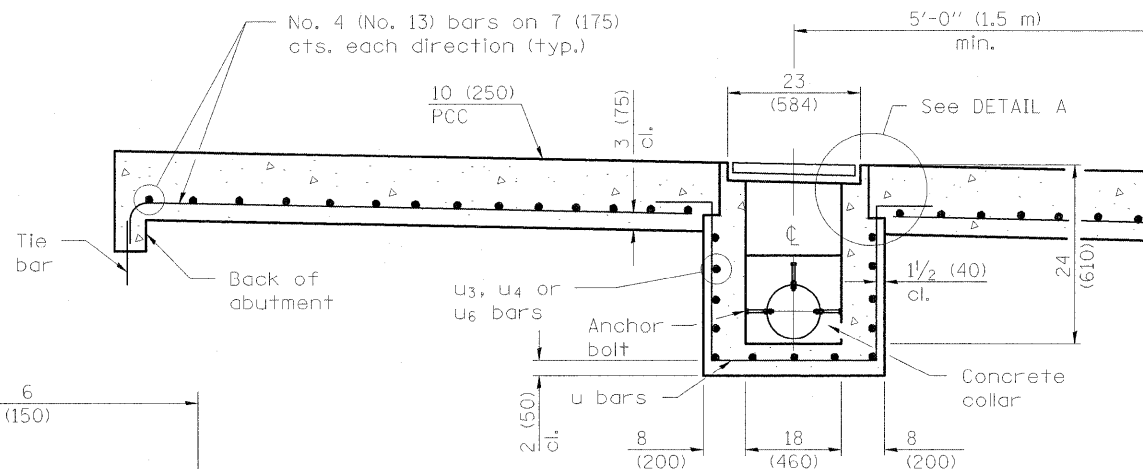
BOX OUTLET WHEN PRECAST



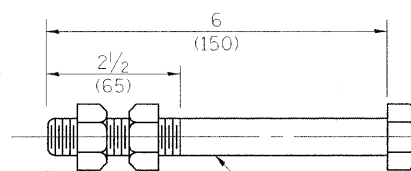
TYPICAL DETAIL PLAN

(With Wingwall)

Dimensions and notes not shown shall be the same as w/o wingwall detail plan above.

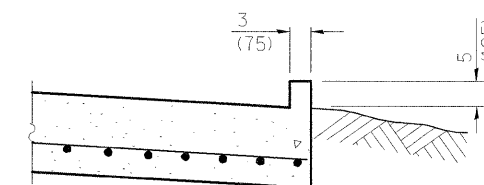


SEC. A-A

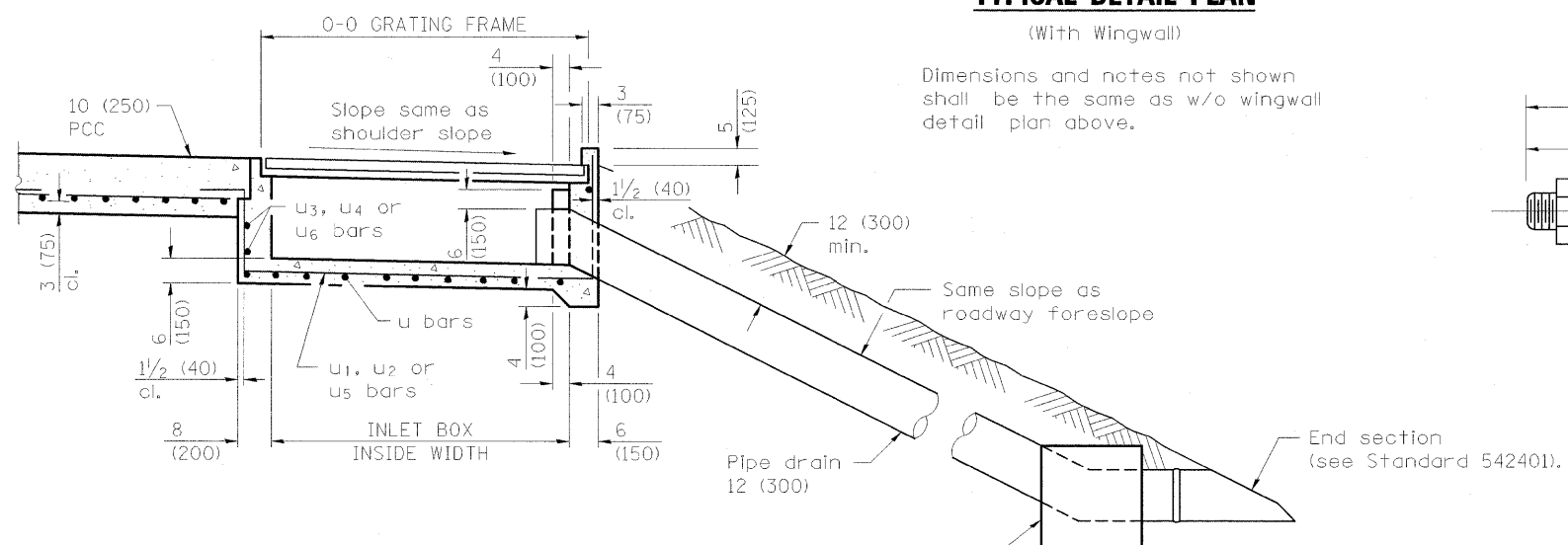


ANCHOR BOLT

(Used to tie pipe to concrete collar)



SEC. C-C



SEC. B-B

Cast in place concrete thrust block 24x24x24 (600x600x600).

| INLET TYPE | SHOULDER WIDTH | O-O GRATING FRAME | INLET BOX INSIDE WIDTH | INLET BOX INSIDE LENGTH |
|------------|-------------------------|-------------------|------------------------|-------------------------|
| Type C | 5' (1.5 m) - 6' (1.8 m) | 4'-4" (1.325 m) | 3'-11" (1.195 m) | 18 (460) |
| Type D | Greater than 6' (1.8 m) | 6'-5" (1.960 m) | 6'-0" (1.830 m) | 18 (460) |

| Station | to | Station | Location |
|---------------|-----|---------------|--------------------------------|
| I-57 | | | |
| APPROACH SLAB | --- | 1493+01.49 | LT, SE CORNER OF FAI 57 BRIDGE |
| RAMP I | | | |
| 13+29.74 | --- | APPROACH SLAB | RT, NW CORNER OF RAMP I BRIDGE |
| APPROACH SLAB | --- | 15+52.52 | RT, SW CORNER OF RAMP I BRIDGE |
| 23+23.10 | --- | APPROACH SLAB | RT, NW CORNER OF FAI 57 BRIDGE |
| APPROACH SLAB | --- | 28+15.98 | RT, SW CORNER OF FAI 57 BRIDGE |
| RAMP J | | | |
| APPROACH SLAB | --- | 4+01.13 | RT, NE CORNER OF FAI 57 BRIDGE |
| 8+38.29 | --- | APPROACH SLAB | RT, NE CORNER OF RAMP J BRIDGE |

GENERAL NOTES

All exposed edges of the inlet, except the upper perimeter, shall be beveled 3/4 (20).

For placement of approach shoulder pavement on existing construction substitute expansion anchor ties for bars. Omit tie bars for flexible approaches or bridge approach shoulder pavement constructed monolithically with shoulder pavement.

All dimensions are in inches (millimeters) unless otherwise shown.

(Sheet 1 of 2)