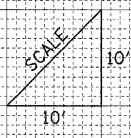
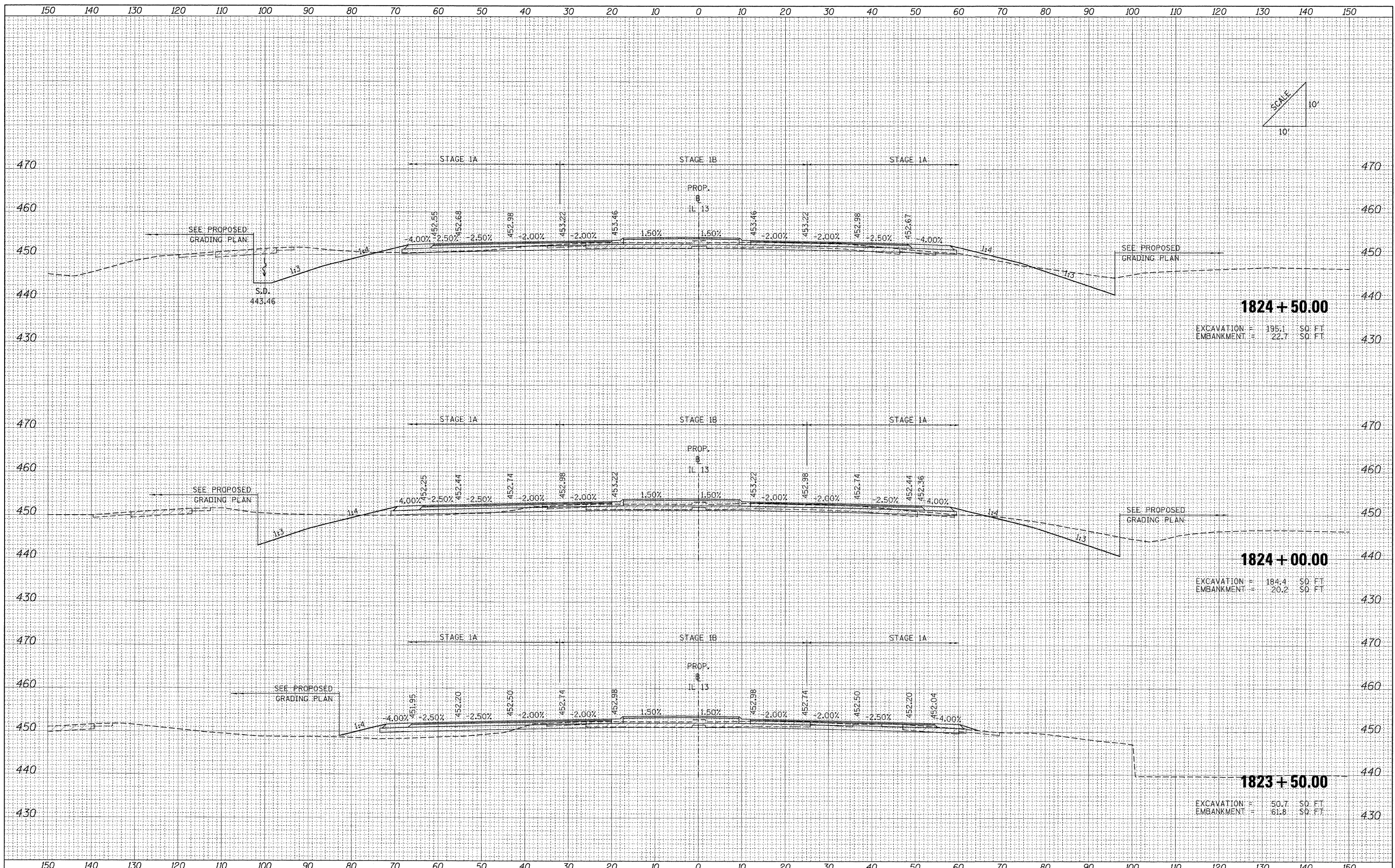


DATE	
BY	
SURVEYED	
PLOTTED	
REPLATE	
NOTE BOOK	
AREAS CHECKED	
NO.	

DATE	
BY	
SURVEYED	
PLOTTED	
REPLATE	
NOTE BOOK	
AREAS CHECKED	
NO.	



1824 + 50.00
 EXCAVATION = 195.1 SQ. FT.
 EMBANKMENT = 22.7 SQ. FT.

1824 + 00.00
 EXCAVATION = 184.4 SQ. FT.
 EMBANKMENT = 20.2 SQ. FT.

1823 + 50.00
 EXCAVATION = 50.7 SQ. FT.
 EMBANKMENT = 61.8 SQ. FT.

FILE NAME = ...D978182-sht-XCS_IL13.dgn

USER NAME = Rob Headly	DESIGNED - MJO	REVISED -
	DRAWN - MJO	REVISED -
PLOT SCALE = 10.0000' / IN.	CHECKED - BJD	REVISED -
PLOT DATE = 10/10/2011	DATE - 10/07/11	REVISED -

**STATE OF ILLINOIS
 DEPARTMENT OF TRANSPORTATION**

CROSS SECTIONS: F.A.P 331 (IL 13)

SCALE: SHEET NO. OF SHEETS STA. 1823+50.00 TO STA. 1824+50.00

F.A. RTE.	SECTION	COUNTY	TOTAL SHEETS	SHEET NO.
* 0X1-6-2HKB-2, HB-1,2; (1X-1R-1	WILLIAMSON	968	862	
* F.A.I. 57 AND F.A.P. 331	CONTRACT NO. 78182			
FED. ROAD DIST. NO.	ILLINOIS FED. AID PROJECT			