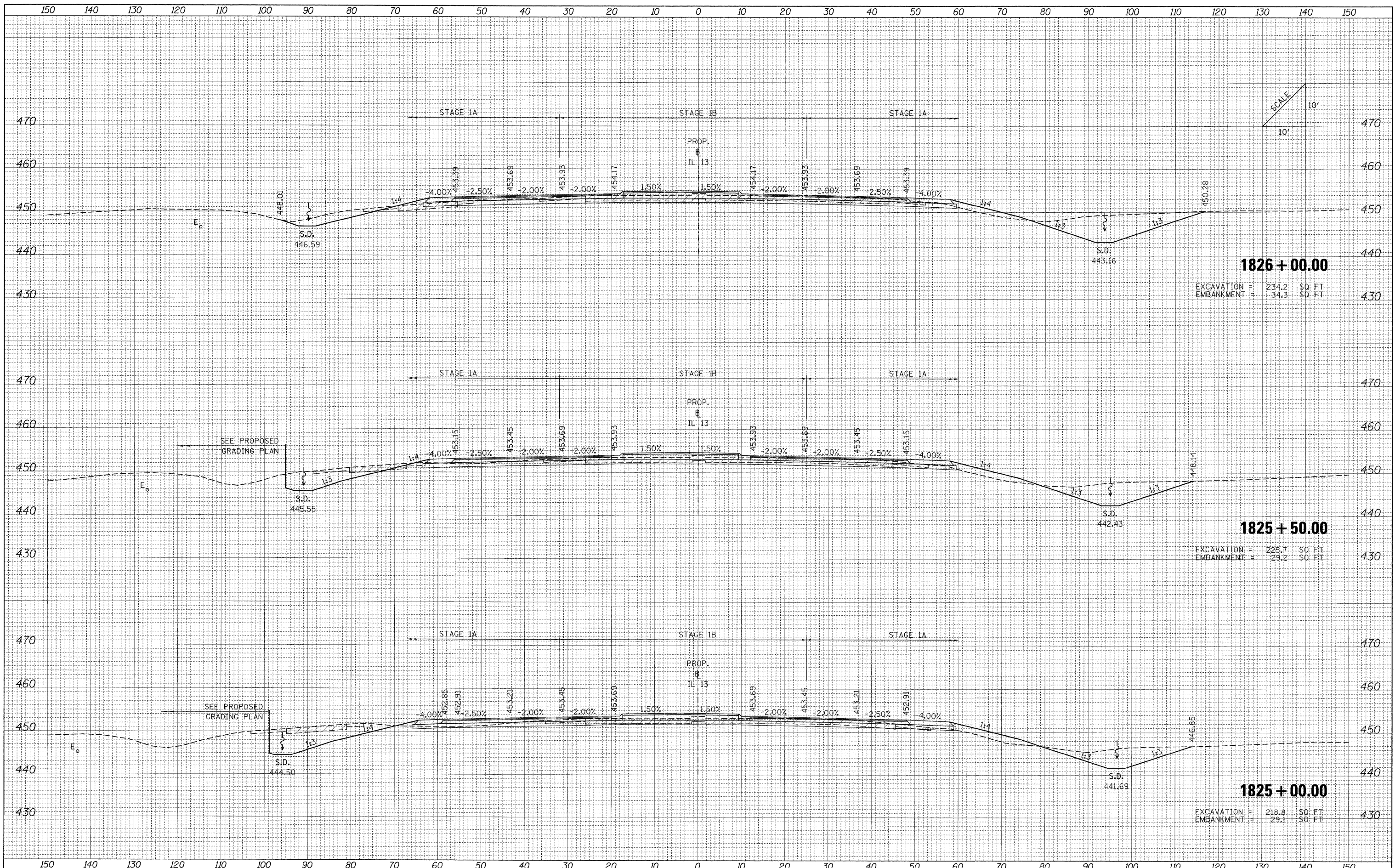


BY	DATE
SURVEYED	
PLOTTED	
EMPAI	
NOTE BOOK	
AREAS CHECKED	
NO.	

BY	DATE
SURVEYED	
PLOTTED	
EMPAI	
NOTE BOOK	
AREAS CHECKED	
NO.	



**1826 + 00.00**  
 EXCAVATION = 234.2 SO. FT.  
 EMBANKMENT = 34.3 SO. FT.

**1825 + 50.00**  
 EXCAVATION = 225.7 SO. FT.  
 EMBANKMENT = 23.2 SO. FT.

**1825 + 00.00**  
 EXCAVATION = 218.8 SO. FT.  
 EMBANKMENT = 29.1 SO. FT.

FILE NAME = ... \D978182-sht-XCS\_IL13.dgn

USER NAME = Rob Heady	DESIGNED - MJO	REVISED -
	DRAWN - MJO	REVISED -
PLOT SCALE = 10.0000" / 1"	CHECKED - BJD	REVISED -
PLOT DATE = 10/10/2011	DATE - 10/07/11	REVISED -

**STATE OF ILLINOIS  
 DEPARTMENT OF TRANSPORTATION**

<b>CROSS SECTIONS: F.A.P 331 (IL 13)</b>			
SCALE:	SHEET NO.	OF SHEETS	STA. 1825+00.00 TO STA. 1826+00.00

F.A. RTE.	SECTION	COUNTY	TOTAL SHEETS	SHEET NO.
• (X1-6-2)HBK-2, HB-1,2; (1X-1R-1	WILLIAMSON	968	863	
• F.A.I. 57 AND F.A.P. 331	CONTRACT NO. 78182			
FED. ROAD DIST. NO.	ILLINOIS FED. AID PROJECT			