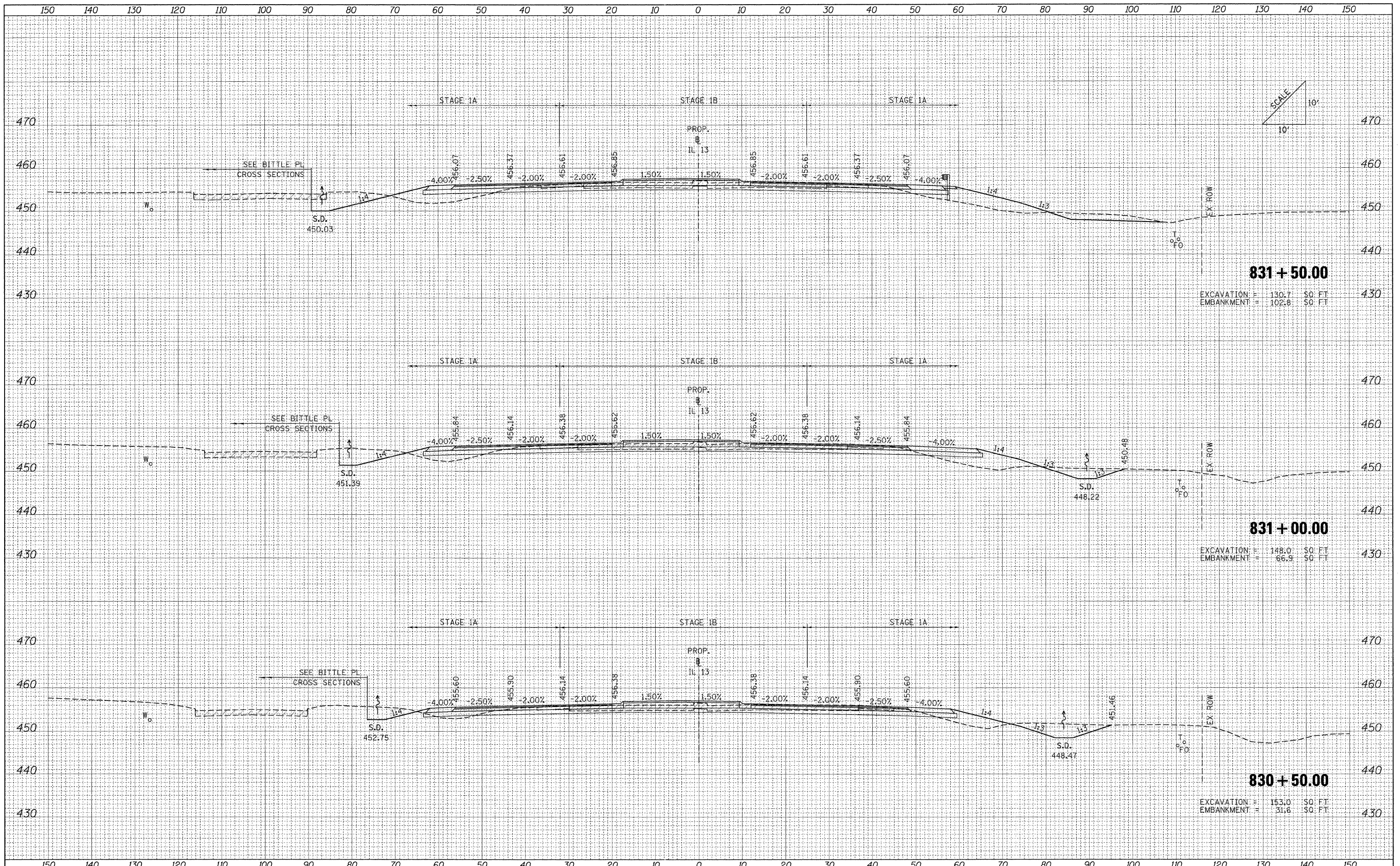


DATE	
BY	
FILE NO.	
SURVEYED	
PLOTTED	
NOTE BOOK	
AREAS CHECKED	

DATE	
BY	
FILE NO.	
SURVEYED	
PLOTTED	
NOTE BOOK	
AREAS CHECKED	



831 + 50.00
 EXCAVATION = 130.7 \$0 FT
 EMBANKMENT = 102.8 \$0 FT

831 + 00.00
 EXCAVATION = 148.0 \$0 FT
 EMBANKMENT = 66.9 \$0 FT

830 + 50.00
 EXCAVATION = 153.0 \$0 FT
 EMBANKMENT = 31.6 \$0 FT

FILE NAME = ...ND978182-ht-XCS_IL13.dgn	USER NAME = Rob Heady	DESIGNED - MJO	REVISED -	STATE OF ILLINOIS DEPARTMENT OF TRANSPORTATION	CROSS SECTIONS: F.A.P 331 (IL 13) SCALE: SHEET NO. OF SHEETS STA. 830+50.00 TO STA. 831+50.00	F.A. RTE.	SECTION	COUNTY	TOTAL SHEETS	SHEET NO.	
	PLOT SCALE = 10.0000' / IN.	DRAWN - MJO	REVISED -			* F.A.I. 57 AND F.A.P. 331	0X1-6-2HBK-2, HB-1.2; 1X-1R-1	WILLIAMSON	968	867	
	PLOT DATE = 10/10/2011	CHECKED - BJD	REVISED -					CONTRACT NO. 78182			
		DATE - 10/07/11	REVISED -					FED. ROAD DIST. NO. ILLINOIS FED. AID PROJECT			