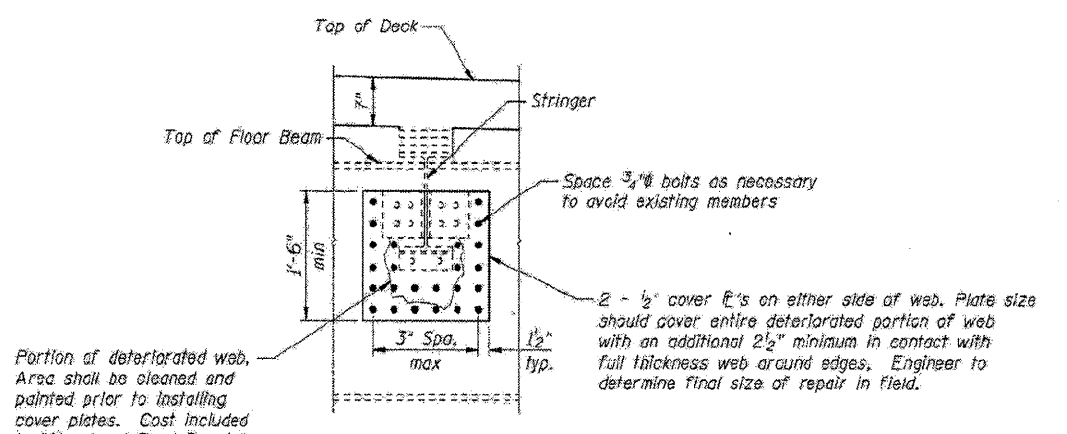
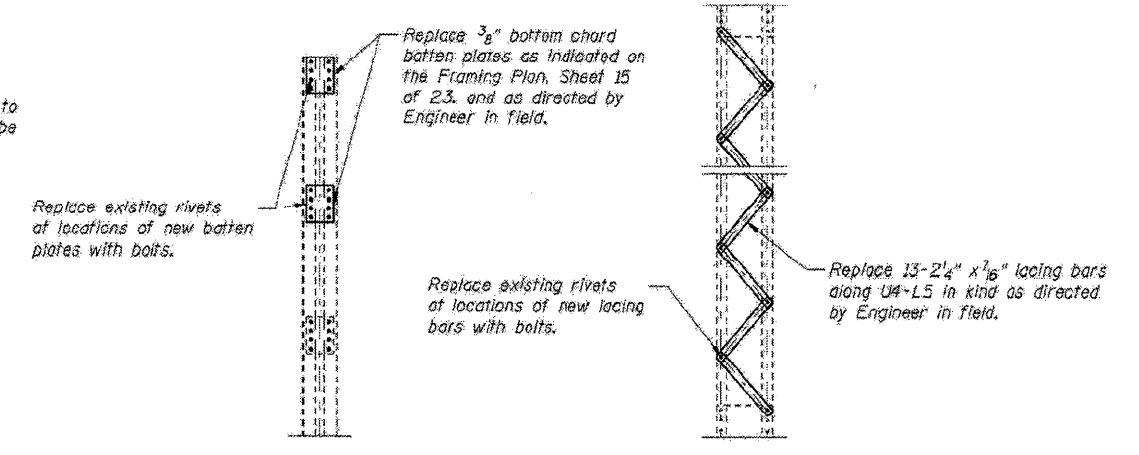


**STRINGER SEAT REPLACEMENT DETAIL**



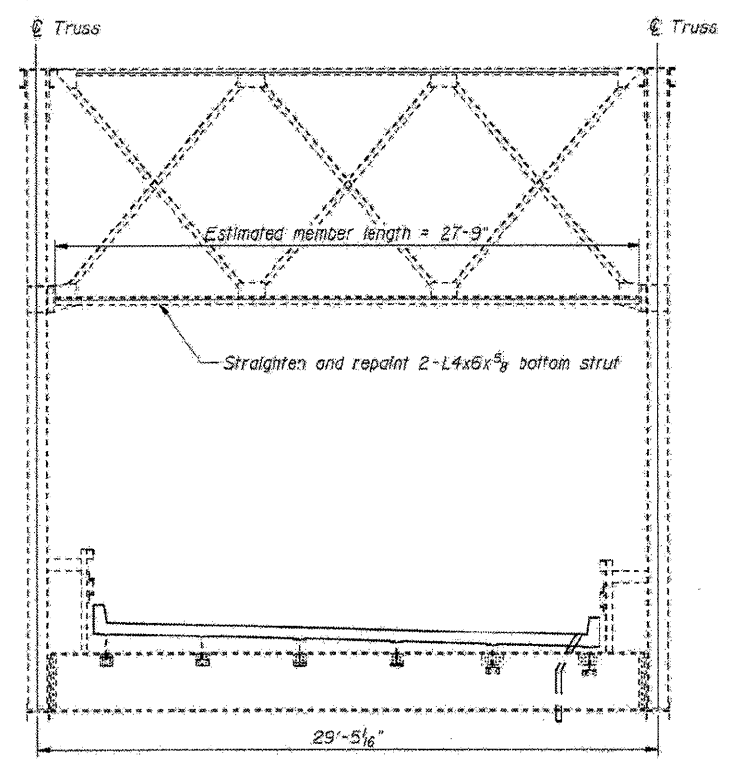
**FLOOR BEAM WEB REPAIR DETAIL**

NOTE: Existing stringer to be shortened as necessary to accommodate floor beam web repairs. Contractor shall be responsible for retrofitting stringer end connection as necessary as approved by Engineer.

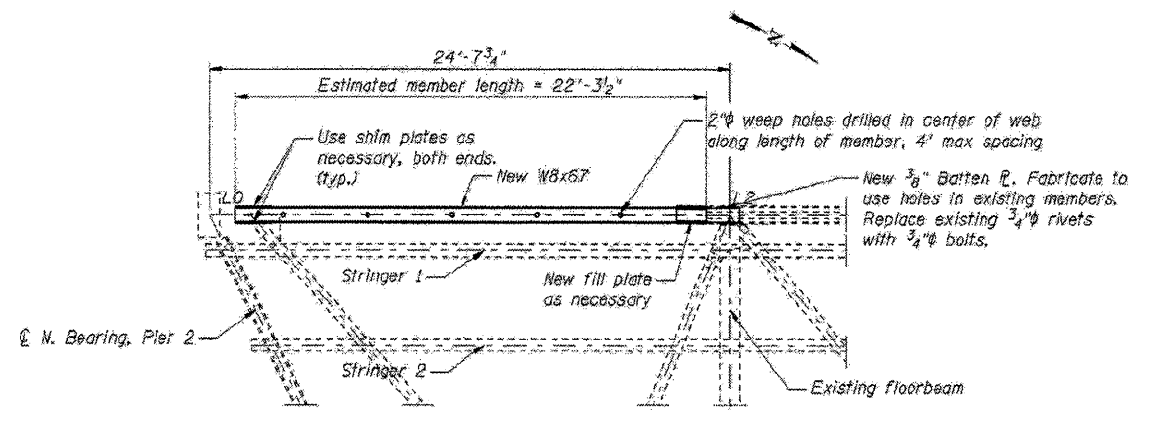


**PLAN DETAIL A**

**PLAN DETAIL B (Span 3)**



**SOUTH END PORTAL SPAN 2**



**BOTTOM CHORD REPLACEMENT SPAN 3**

**MEMBER SERVICE FORCES**

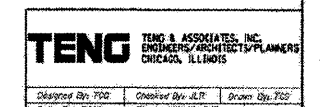
LOADING	AXIAL (kips)
Steel DL only	2.2
25 psf DL	1.2

**NOTES:**

- All steel repairs shown on this Sheet to be paid for under "Structural Steel Repair".
- Existing rivets in spans 1 and 3 are 3/4", existing rivets in span 2 are 3/8" according to record plans. Replace rivets with a bolt equal to existing rivet diameter.

**FOR INFORMATION ONLY**

ILLINOIS DEPARTMENT OF TRANSPORTATION  
**STEEL REPAIR DETAILS**  
 OLD ILLINOIS ROUTE 3  
 OVER SEXTON CREEK  
 S.B.I. ROUTE 150 - SECTION (133A)D,I  
 ALEXANDER COUNTY  
 STATION 1212+84.95  
 STRUCTURE NO. 002-0009



STATE OF ILLINOIS  
 DEPARTMENT OF TRANSPORTATION

S.N. 002-0009		RTE	SECTION	COUNTY	TOTAL SHEET SHEETS NO.
OLD IL ROUTE 3 OVER SEXTON CREEK		150C	133P-1	ALEXANDER	14 14
SCALE: SHEET NO. OF STA. TO		CONTRACT NO. 78269			
		ILLINOIS FED. AID. PROJECT			