

STATE OF ILLINOIS
DEPARTMENT OF TRANSPORTATION
DIVISION OF HIGHWAYS

S.B.I. RTE.	SECTION	COUNTY	TOTAL SHEETS	SHEET NO.
150C	133P-1	ALEXANDER	14	1
CONTRACT NO. 78269				

FOR INDEX OF SHEETS, SEE SHEET NO. 2

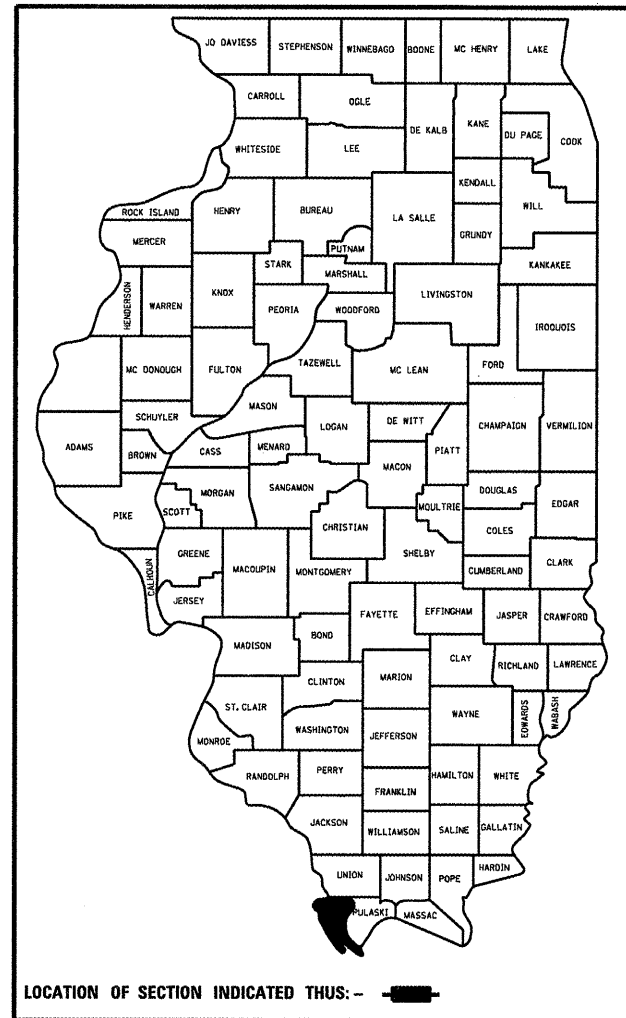
**PROPOSED
HIGHWAY PLANS**

S.B.I. 150C (OLD IL RTE. 3)
SECTION 133P-1

BRIDGE PAINTING
ALEXANDER COUNTY

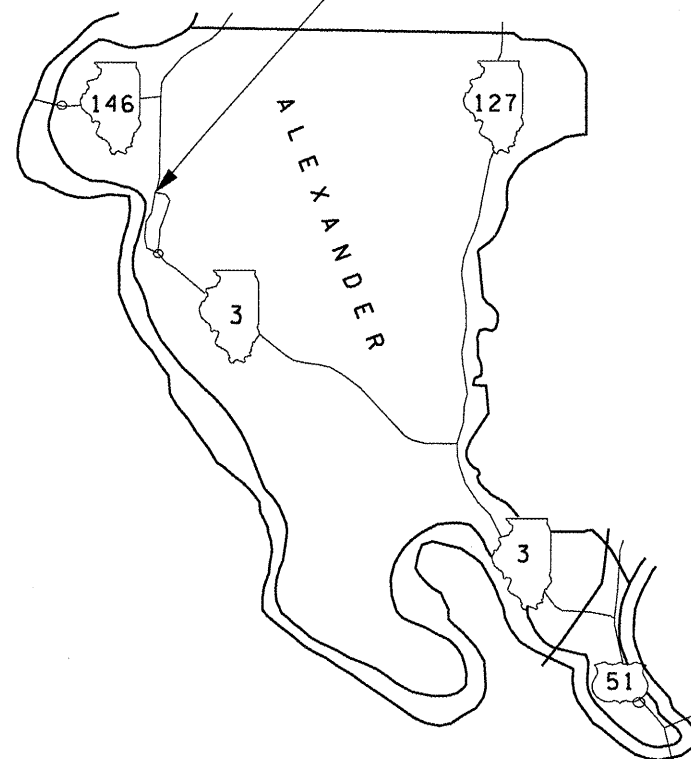
C-99-057-11

D-99-046-11



2007 ADT: 325
7% TRUCKS
INVENTORY RATING: 16.3
OPERATING RATING: 27.5
COUNTY UNIT ROAD DISTRICT

IMPROVEMENT LOCATION
STRUCTURE NO. 002-0009
S.B.I. 150C (OLD IL RTE. 3)
OVER SEXTON CREEK



J.U.L.I.E.
JOINT UTILITY LOCATION INFORMATION FOR EXCAVATION
1-800-892-0123
OR 811

PROJECT ENGINEER David Piche
DESIGNER Rita Gautney

CONTRACT NO. 78269

STATE OF ILLINOIS
DEPARTMENT OF TRANSPORTATION
DIVISION OF HIGHWAYS

SUBMITTED Oct 24 2011

Omer Asmussen
DEPUTY DIRECTOR OF HIGHWAYS, REGION ENGINEER

Dec 9 2011
Scott E. Stitt, P.E., PE
actng ENGINEER OF DESIGN AND ENVIRONMENT

Dec 9 2011
William R. Fleyer
Interim DIRECTOR OF HIGHWAYS, CHIEF ENGINEER

PRINTED BY THE AUTHORITY
OF THE STATE OF ILLINOIS

INDEX OF SHEETS

<u>SHEET NO.</u>	<u>DESCRIPTION</u>
1	COVER SHEET
2	INDEX OF SHEETS, STANDARDS, SIGNATURES, GENERAL NOTES
3	SUMMARY OF QUANTITIES
4	STRUCTURAL STEEL PAINTED BY OTHERS
5	MAINTENANCE OF TRAFFIC DETAIL
6-15	STRUCTURE PLANS FOR INFORMATION

GENERAL NOTES

Access must be maintained to all existing properties during construction per article 107.09 unless arrangements for short-term closures are made in writing by the Contractor with the property owners.

All type III Barricades shall be stabilized with a minimum of four sandbags.

The existing steel coatings contain lead. The Contractor should take appropriate precautions to deal with the presence of lead on this project.

Portions of the structure were painted in 2011 under Contract No. 98910. These areas include the bottom chord, and all structural steel within 5' of the deck joints over the piers and abutments. There were also several members replaced under this contract. The areas of previously painted and replaced members are shown on Sheet 4 of 14. Except for the structural steel painted or replaced in 2011 and as approved by the Engineer, all existing structural steel shall be cleaned per Near White Blast Cleaning - SSPC-SP10 and painted according to the requirements of Paint System 1 - OZ/E/U. See special provision "Cleaning and Painting Existing Steel Structures".

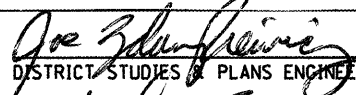

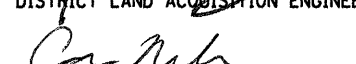



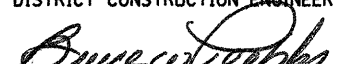
The color of the final finish coat for all steel surfaces shall be Gray, Munsell No. 5B 7/1.

A minimum of one air monitor will be required to monitor abrasive blasting operations at this site. See special provision "Containment and Disposal of Lead Paint Cleaning Residues".

Commitments: None as of October 14, 2011

STANDARDS

- BLR 21-9 ROAD CLOSURE ON RURAL LOCAL HIGHWAYS
- 701006-03 OFF-ROAD OPERATIONS ON 2L, 2W HIGHWAY
- 701901-02 TRAFFIC CONTROL DEVICES

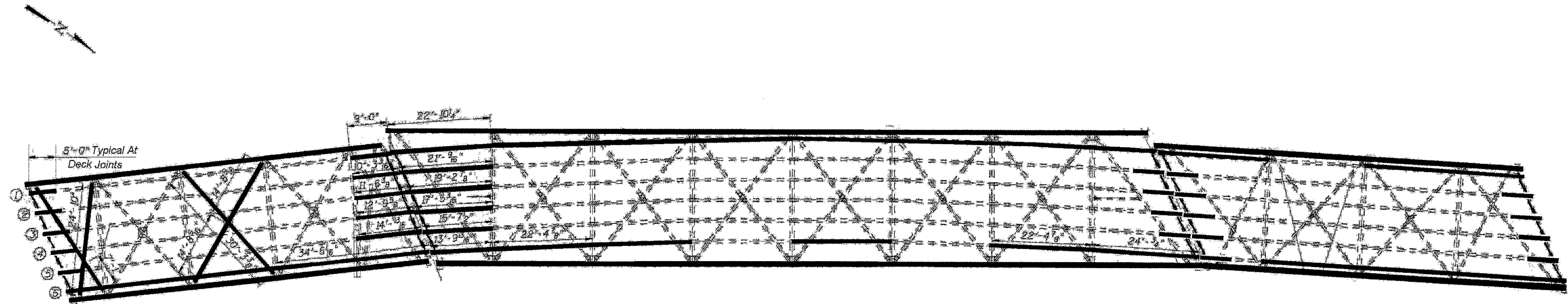
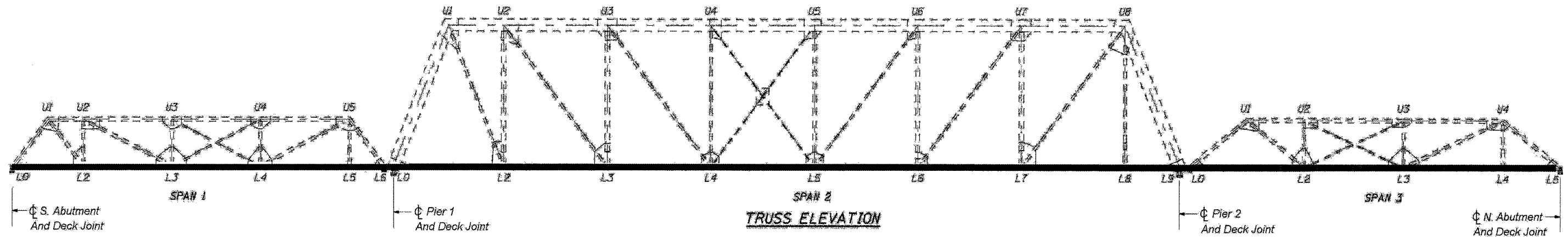
Prepared By:	 DISTRICT STUDIES & PLANS ENGINEER
Examined By:	 DISTRICT LAND ACQUISITION ENGINEER
Examined By:	 DISTRICT PROGRAM DEVELOPMENT ENGINEER
Examined By:	 DISTRICT OPERATIONS ENGINEER
Examined By:	 DISTRICT CONSTRUCTION ENGINEER
Examined By:	 DISTRICT MATERIALS ENGINEER
Approved By:	 DEPUTY DIRECTOR OF HIGHWAYS, REGION ENGINEER
	Oct 24 2011 DATE

FILE NAME =	USER NAME = gautneyrk	DESIGNED - RKG	REVISED -	STATE OF ILLINOIS DEPARTMENT OF TRANSPORTATION	S.N. 002-0009 OLD IL ROUTE 3 OVER SEXTON CREEK	S.B.I. RTE. 150C	SECTION 133P-1	COUNTY ALEXANDER	TOTAL SHEETS 14	SHEET NO. 2
at\pe_work\pwidot\gautneyrk\d0267843\78269-shr-plen.dgn		DRAWN - RKG	REVISED -					CONTRACT NO. 78269		
PLOT SCALE = 4915.2686' / in.		CHECKED -	REVISED -		SCALE: _____					
PLOT DATE = 10/24/2011		DATE -	REVISED -		SHEET NO. _ OF _ SHEETS					
					STA. _____ TO STA. _____					
										ILLINOIS FED. AID PROJECT

SUMMARY OF QUANTITIES

CONSTRUCTION TYPE CODE:	0014
FUNDING:	100% STATE
LOCATION:	RURAL
COUNTY:	ALEXANDER
ROUTE:	OLD IL 3

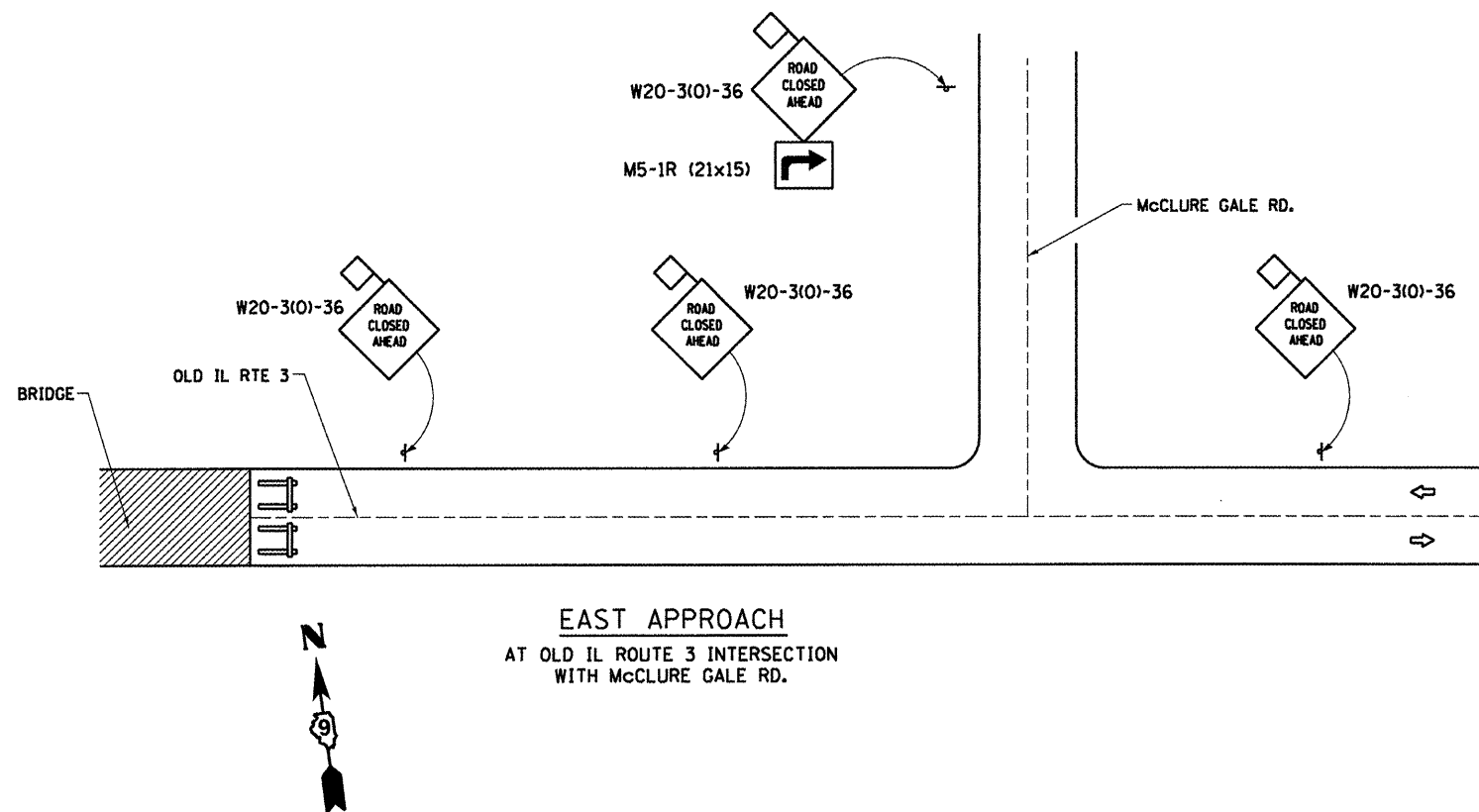
CODE NUMBER	ITEM DESCRIPTION	UNIT	QUANTITY
67100100	MOBILIZATION	L. SUM	1
70106800	CHANGEABLE MESSAGE SIGN	CAL. MO.	2
X7010222	TRAFFIC CONTROL AND PROTECTION, STANDARD BLR 21 (SPECIAL)	L. SUM	1
Z0007101	CONTAINMENT AND DISPOSAL OF LEAD PAINT CLEANING RESIDUES NO. 1	L. SUM	1
Z0010501	CLEANING AND PAINTING STEEL BRIDGE NO. 1	L. SUM	1



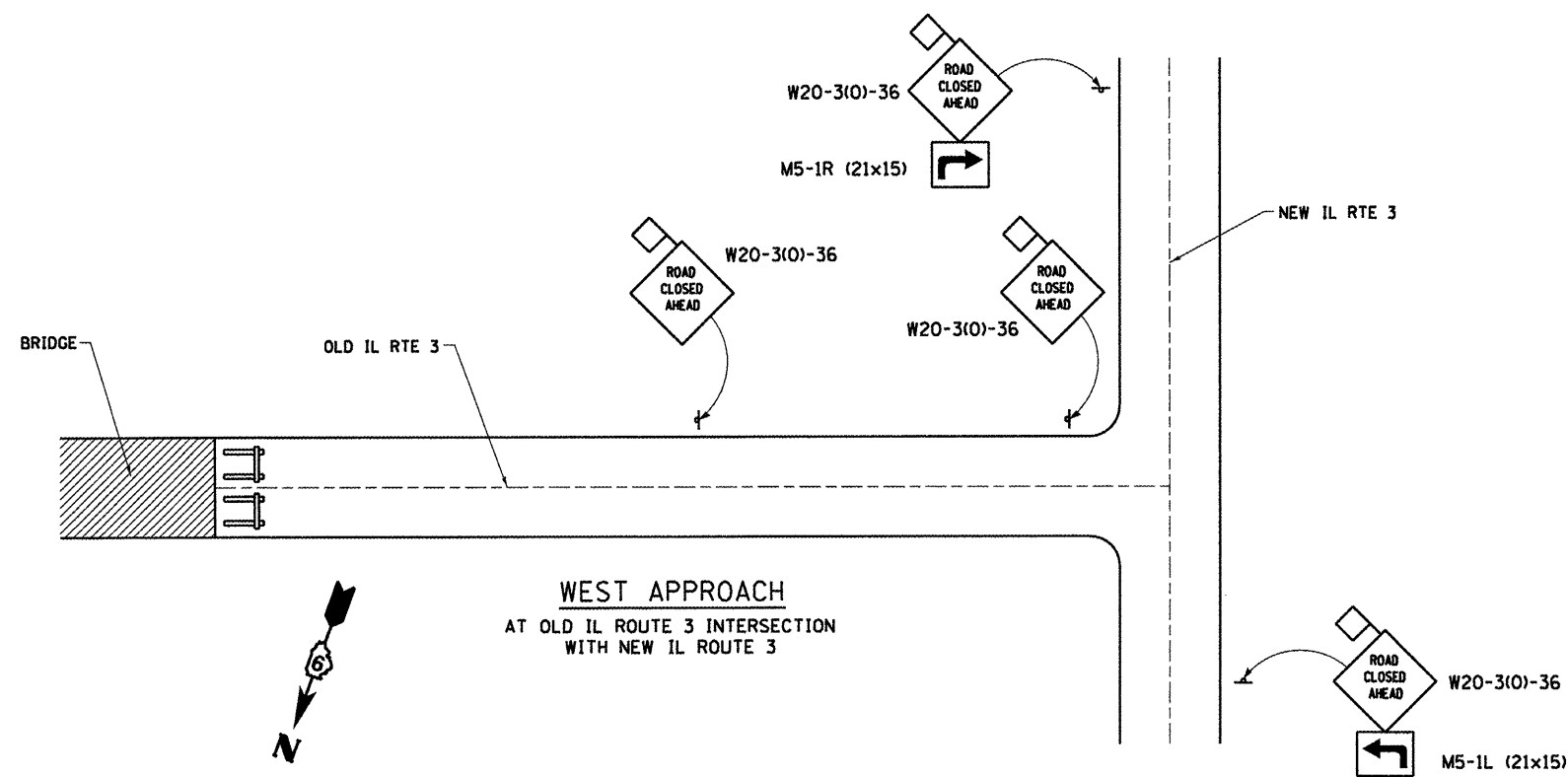
STATE OF ILLINOIS
DEPARTMENT OF TRANSPORTATION

	RTE.	SECTION	COUNTY	TOTAL SHEET
	150C	133P-1	ALEXANDER	SHEETS NO.
			CONTRACT NO. 78269	4
			ILLINOIS FED. AID. PROJECT	

SCALE: _____ SHEET NO. ____ OF ____ STA. _____ TO _____



EAST APPROACH
AT OLD IL ROUTE 3 INTERSECTION
WITH McCLURE GALE RD.


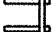



WEST APPROACH
AT OLD IL ROUTE 3 INTERSECTION
WITH NEW IL ROUTE 3

NOTES:

1. TRAFFIC CONTROL TO BE PROVIDED IN ACCORDANCE WITH HIGHWAY STANDARD B.L.R. 21-9 AND AS SPECIFIED HEREIN, AND SHALL BE PAID AT THE CONTRACT PRICE PER "LUMP SUM" FOR TRAFFIC CONTROL AND PROTECTION, STANDARD BLR 21 (SPECIAL).
2. SIGN LOCATIONS, INCLUDING PORTABLE CHANGEABLE MESSAGE SIGN, SHALL BE DETERMINED BY THE ENGINEER.
3. SEE HIGHWAY STANDARD B.L.R. 21-9 FOR DETAILS NOT SHOWN.

SYMBOLS

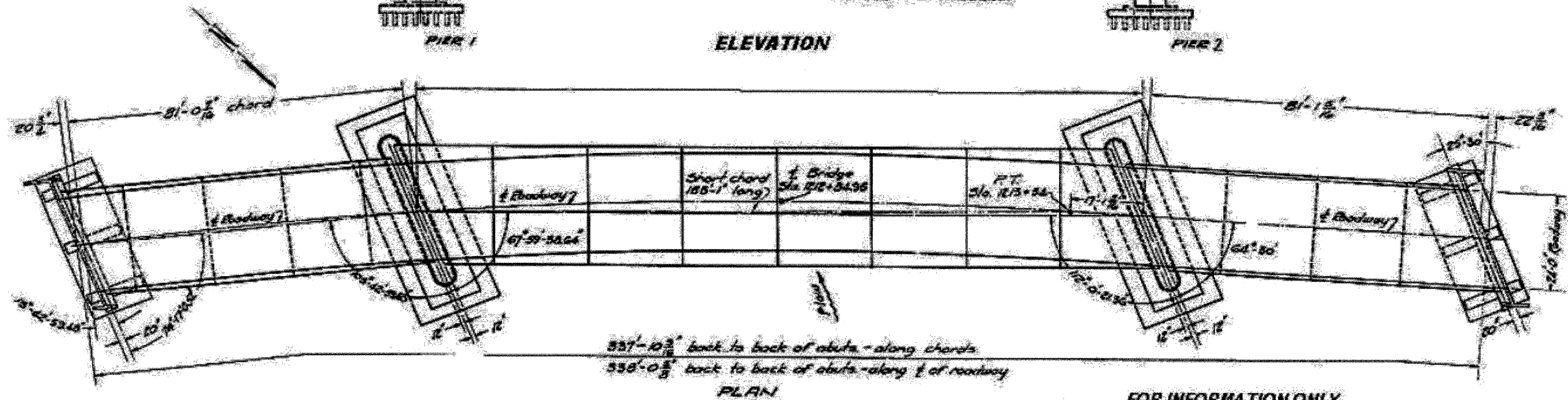
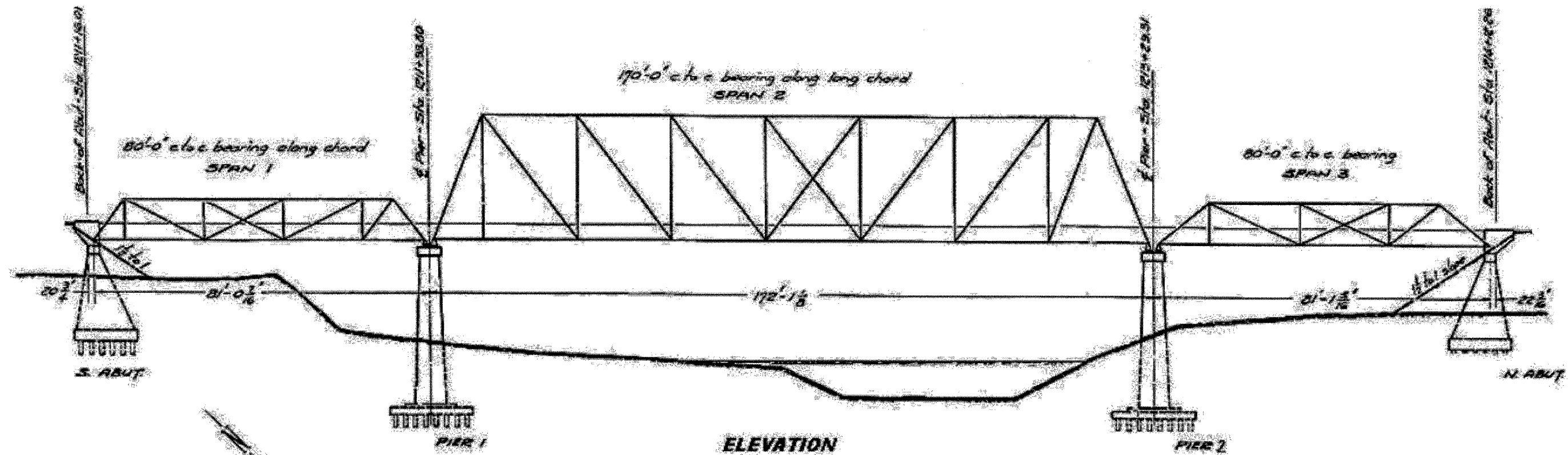
-  WORK AREA
-  TYPE III BARRICADE
-  SIGN WITH 18" BY 18" (MINIMUM) ORANGE FLAG ATTACHED

FILE NAME =	USER NAME = gautneyrk	DESIGNED - KHH	REVISED - RKG
c:\pwwork\pwwork\gautneyrk\d8267843\78269-sht-pln.dgn		DRAWN - KHH	REVISED -
	PLOT SCALE = 4668.7364' / in.	CHECKED - FML	REVISED -
	PLOT DATE = 10/24/2011	DATE - 11/2008	REVISED -

STATE OF ILLINOIS
DEPARTMENT OF TRANSPORTATION

SN 002-0009			
MAINTENANCE OF TRAFFIC DETAIL			
OLD IL ROUTE 3 OVER SEXTON CREEK			
SCALE: N.T.S.	SHEET NO. _ OF _ SHEETS	STA. TO STA.	

S.B.I. RTE. 150C	SECTION 133P-1	COUNTY ALEXANDER	TOTAL SHEETS 14	SHEET NO. 5
FED. ROAD DIST. NO. ILLINOIS		FED. AID PROJECT CONTRACT NO. 78269		

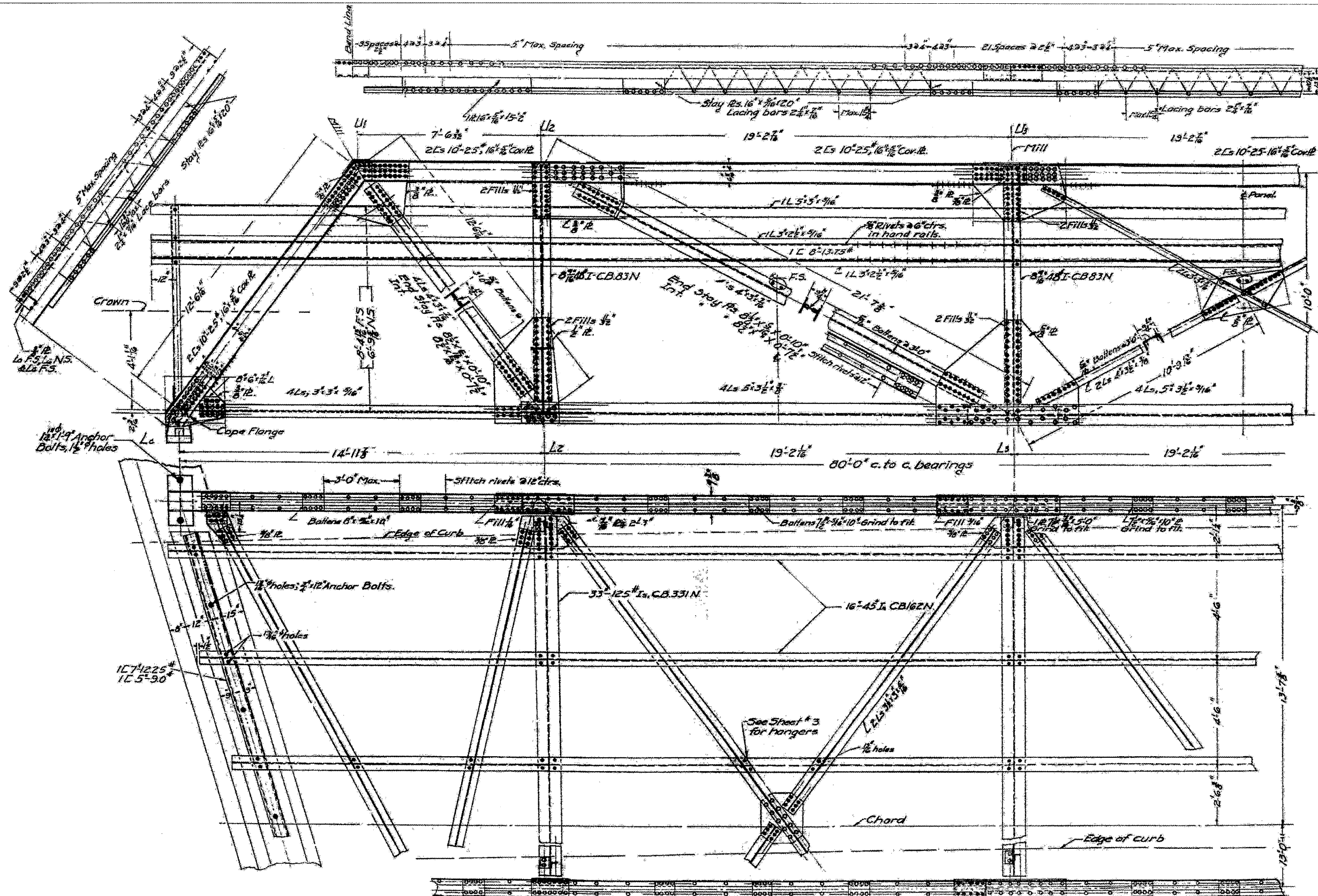


FOR INFORMATION ONLY
 S.B.I. ROUTE 150 SEC. 133-C
 ALEXANDER CO.
 STA. 1212+84.95

STATE OF ILLINOIS
 DEPARTMENT OF TRANSPORTATION

S.N. 002-0009
 OLD IL. ROUTE 3 OVER SEXTON CREEK

RTE.	SECTION	COUNTY	TOTAL SHEETS
150C	133P-1	ALEXANDER	14 6
CONTRACT NO. 78269			
ILL. 2029, FED. AID PROJECT			

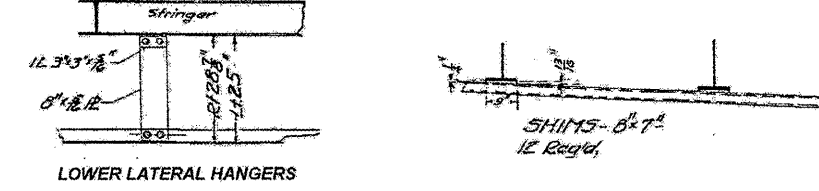
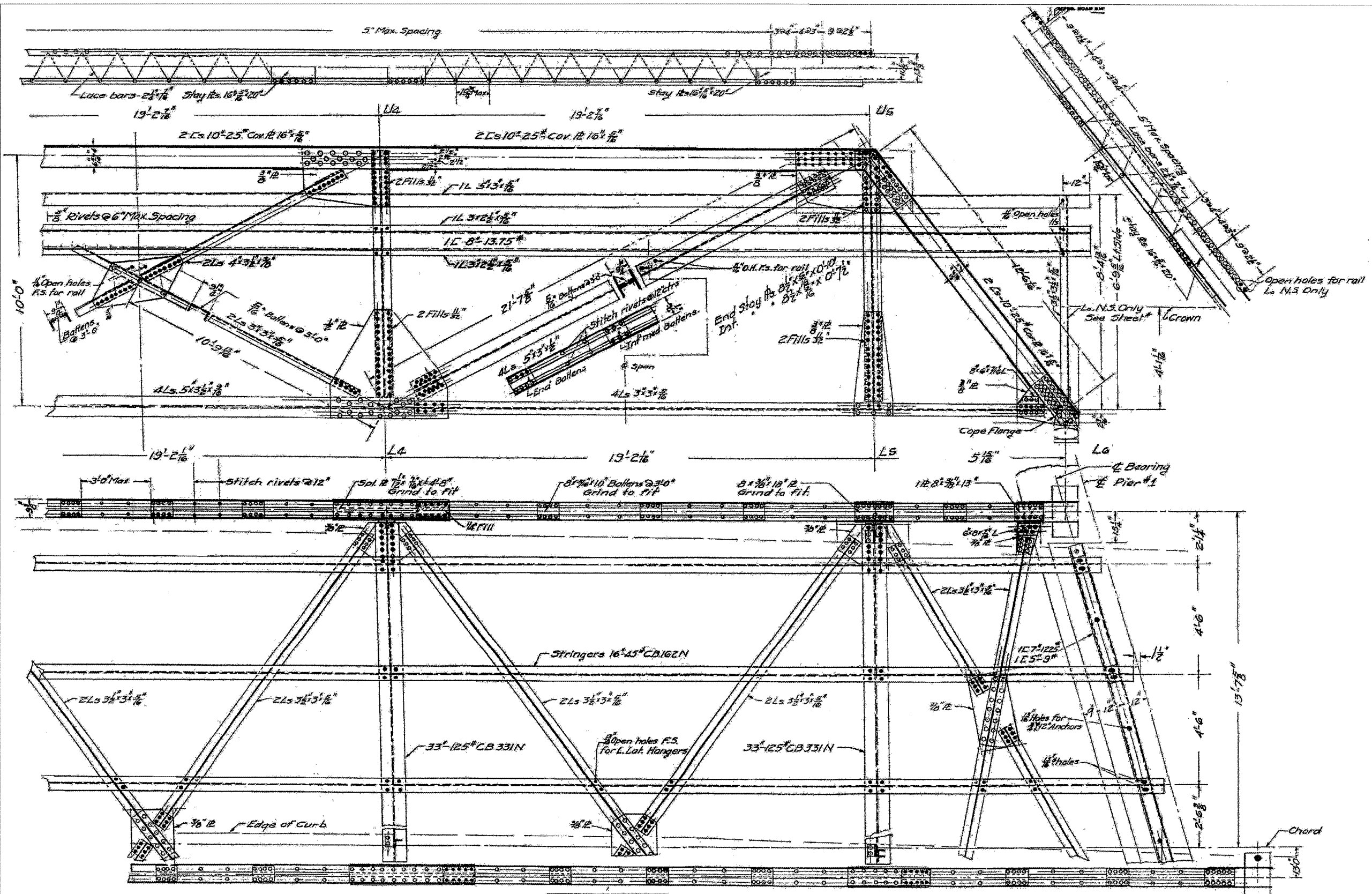


FOR INFORMATION ONLY
 SPAN 1
 S.B.I. ROUTE 150 - SEC. 133-C
 ALEXANDER CO.
 STA. 1212+84.95

STATE OF ILLINOIS
 DEPARTMENT OF TRANSPORTATION

S.N. 002-0009
 OLD IL ROUTE 3 OVER SEXTON CREEK
 SCALE: _____ SHEET NO. ____ OF ____ STA. ____ TO ____

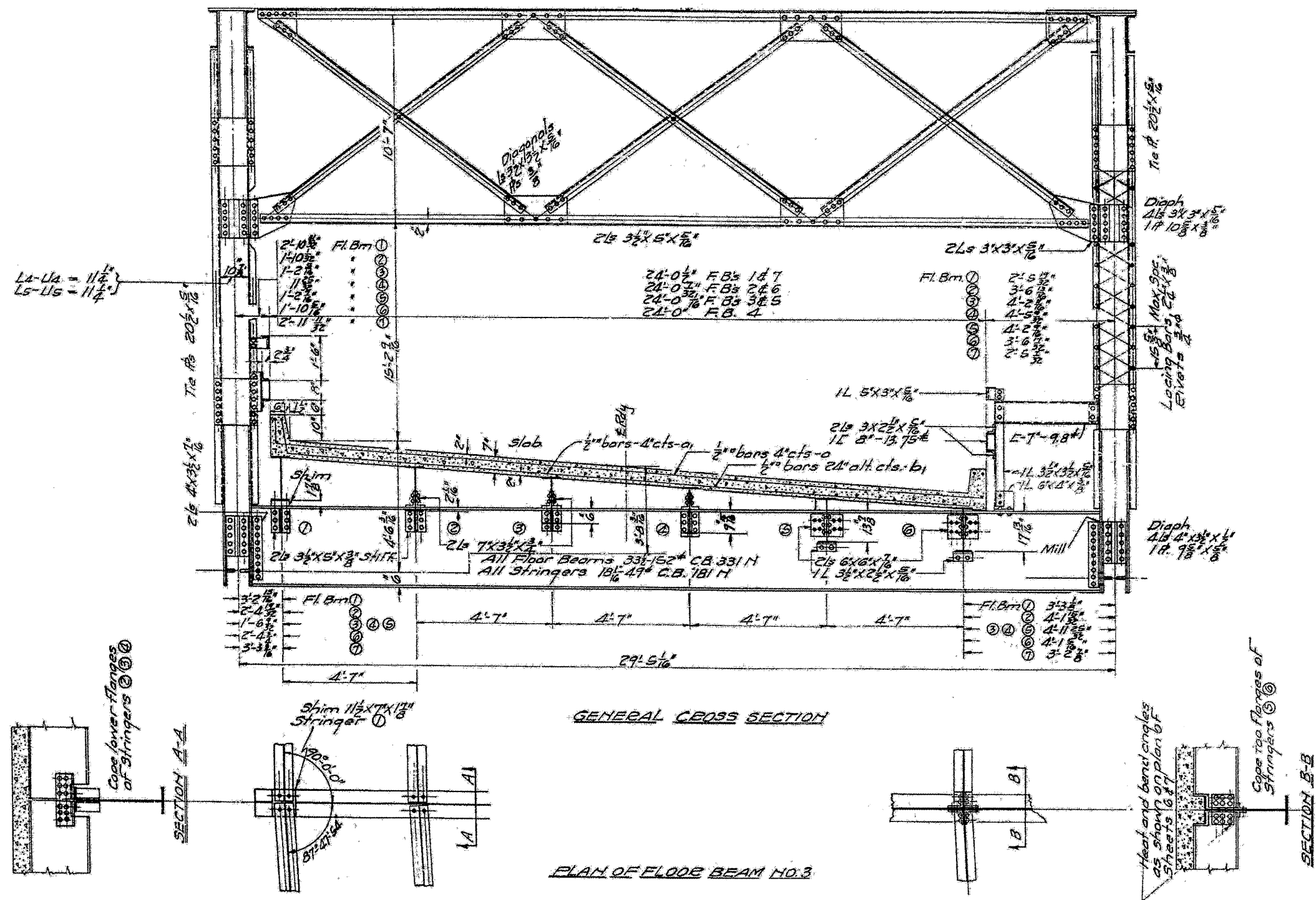
RTE.	SECTION	COUNTY	TOTAL SHEET SHEETS	NO.
150C	133P-1	ALEXANDER	14	7
CONTRACT NO. 78269			ILLINOIS FED. AID. PROJECT	



FOR INFORMATION ONLY
 SPAN 1
 S.B.I. ROUTE 150 - SEC. 133-C
 ALEXANDER CO.
 STA. 1212+84.95

STATE OF ILLINOIS
 DEPARTMENT OF TRANSPORTATION

S.N. 002-0009	RTE.	SECTION	COUNTY	TOTAL SHEET SHEETS NO.
OLD IL ROUTE 3 OVER SEXTON CREEK	150C	133P-1	ALEXANDER	14 8
SCALE: _____ SHEET NO. _____ OF _____ STA. _____ TO _____	CONTRACT NO. 78269			
ILLINOIS FED. AID. PROJECT				

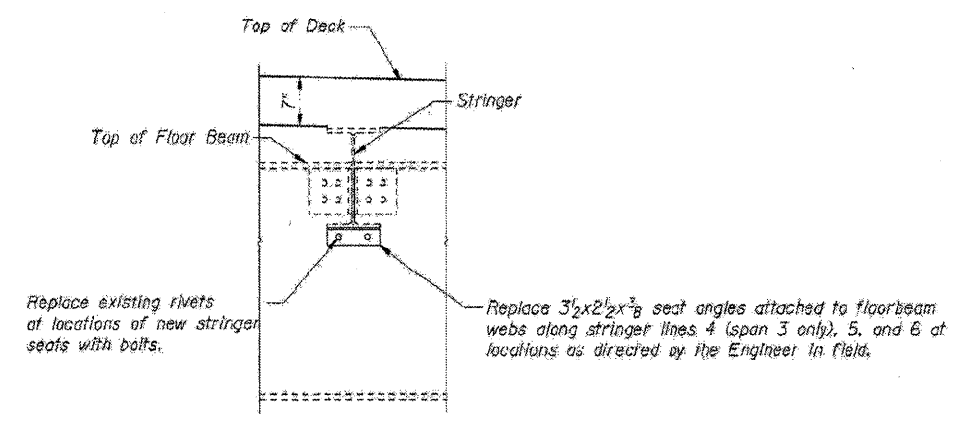


FOR INFORMATION ONLY
S.B.I. ROUTE 150-SEC. 133-C
ALEXANDER CO.
STA. 1212+84.95

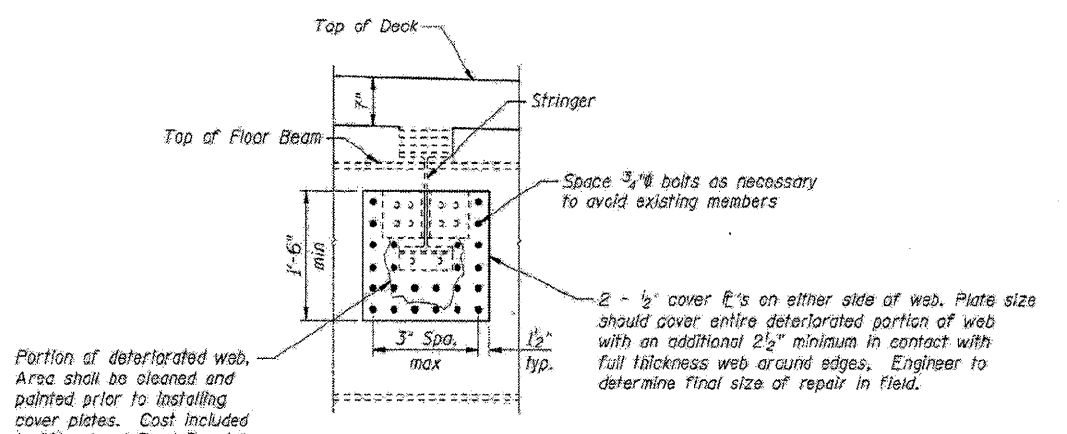
STATE OF ILLINOIS
DEPARTMENT OF TRANSPORTATION

S.N. 002-0009
OLD IL ROUTE 3 OVER SEXTON CREEK
SCALE: SHEET NO. OF STA. TO

RTE.	SECTION	COUNTY	TOTAL SHEET SHEETS NO.	
150C	133P-1	ALEXANDER	14	12
CONTRACT NO. 78269				
ILLINOIS FED. AID. PROJECT				

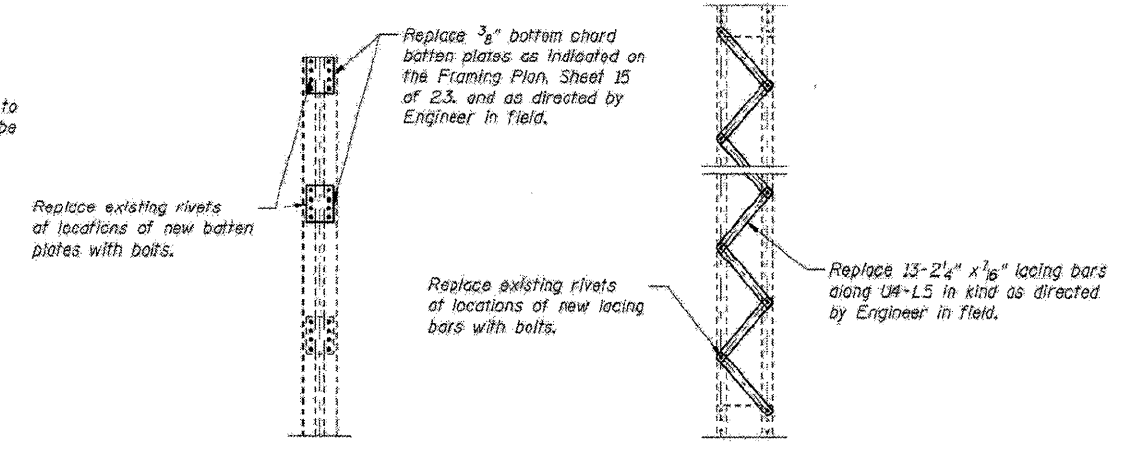


STRINGER SEAT REPLACEMENT DETAIL



FLOOR BEAM WEB REPAIR DETAIL

NOTE: Existing stringer to be shortened as necessary to accommodate floor beam web repairs. Contractor shall be responsible for retrofitting stringer end connection as necessary as approved by Engineer.

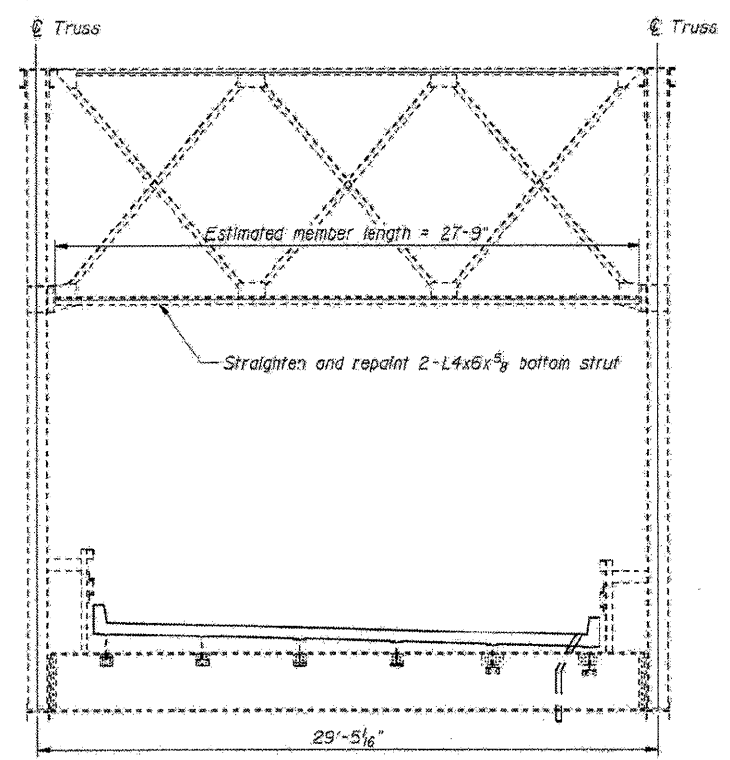


PLAN DETAIL A

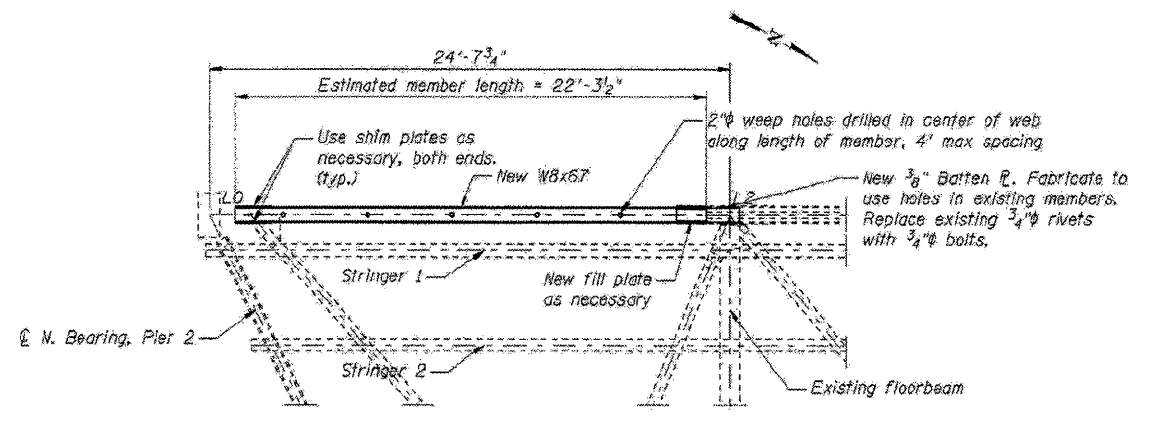
PLAN DETAIL B (Span 3)

NOTES:

- All steel repairs shown on this Sheet to be paid for under "Structural Steel Repair".
- Existing rivets in spans 1 and 3 are 3/4", existing rivets in span 2 are 3/8" according to record plans. Replace rivets with a bolt equal to existing rivet diameter.



SOUTH END PORTAL SPAN 2



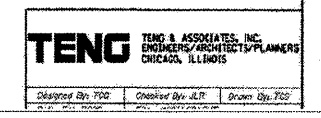
BOTTOM CHORD REPLACEMENT SPAN 3

MEMBER SERVICE FORCES

LOADING	AXIAL (kips)
Steel DL only	2.2
25 psf DL	1.2

FOR INFORMATION ONLY

ILLINOIS DEPARTMENT OF TRANSPORTATION
STEEL REPAIR DETAILS
 OLD ILLINOIS ROUTE 3
 OVER SEXTON CREEK
 S.B.I. ROUTE 150 - SECTION (133A)D,I
 ALEXANDER COUNTY
 STATION 1212+84.95
 STRUCTURE NO. 002-0009



STATE OF ILLINOIS
 DEPARTMENT OF TRANSPORTATION

S.N. 002-0009		RTE	SECTION	COUNTY	TOTAL SHEET SHEETS NO.
OLD IL ROUTE 3 OVER SEXTON CREEK		150C	133P-1	ALEXANDER	14 14
SCALE: SHEET NO. OF STA. TO		CONTRACT NO. 78269			
		ILLINOIS FED. AID. PROJECT			