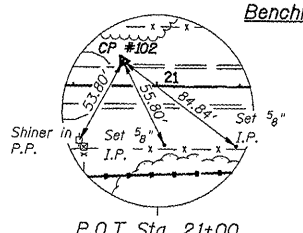
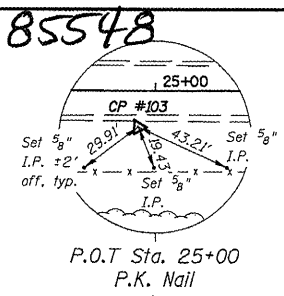


Benchmark: Rail Road Spike in 3rd Power Pole South of Structure; 33.7' Rt. of Sta. 15+43, El. 842.59

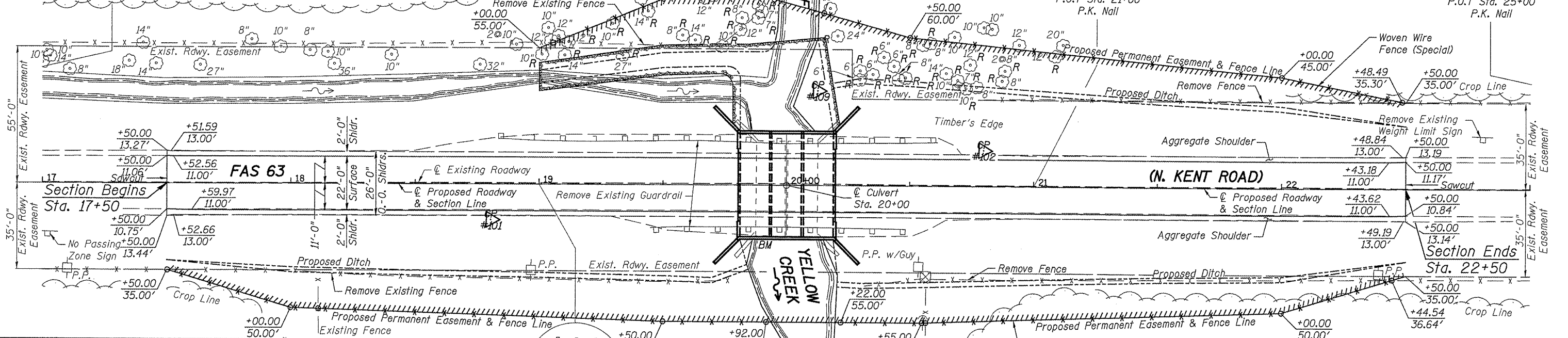
Benchmark: Chiseled "□" on the S/E Corner of Existing Culvert; 20.3' Rt. of Sta. 19+88, El. 840.96



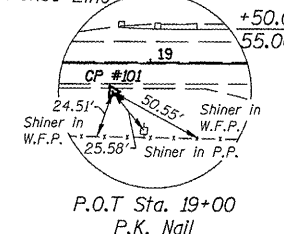
Benchmark: Rail Road Spike in 3rd Power Pole North of Existing Structure; 34.3' Rt. of Sta. 24+16, El. 843.81



85548



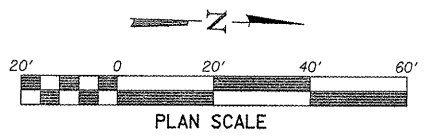
| F.A.S. 63 (NORTH KENT ROAD) - HORIZONTAL CONTROL POINTS | | | | | |
|---|------------------|------------|------------|--------|-------------|
| PT # | STA. | N | E | EL. | DESCRIPTION |
| 100 | 15.7' RT 14+83.6 | 2057575.88 | 2373312.29 | 845.40 | IP |
| 101 | 14.6' RT 18+80.6 | 2057972.72 | 2373300.38 | 843.31 | IP |
| 102 | 14.6' LT 20+79.8 | 2058171.02 | 2373265.67 | 843.25 | IP |
| 103 | 15.8' RT 24+92.6 | 2058584.53 | 2373284.84 | 845.92 | IP |
| 104 | 13.9' RT 16+92.5 | 2057784.68 | 2373304.78 | 843.77 | IP |
| 109 | 38.3' LT 20+12.6 | 2058103.21 | 2373243.88 | 835.32 | IP |



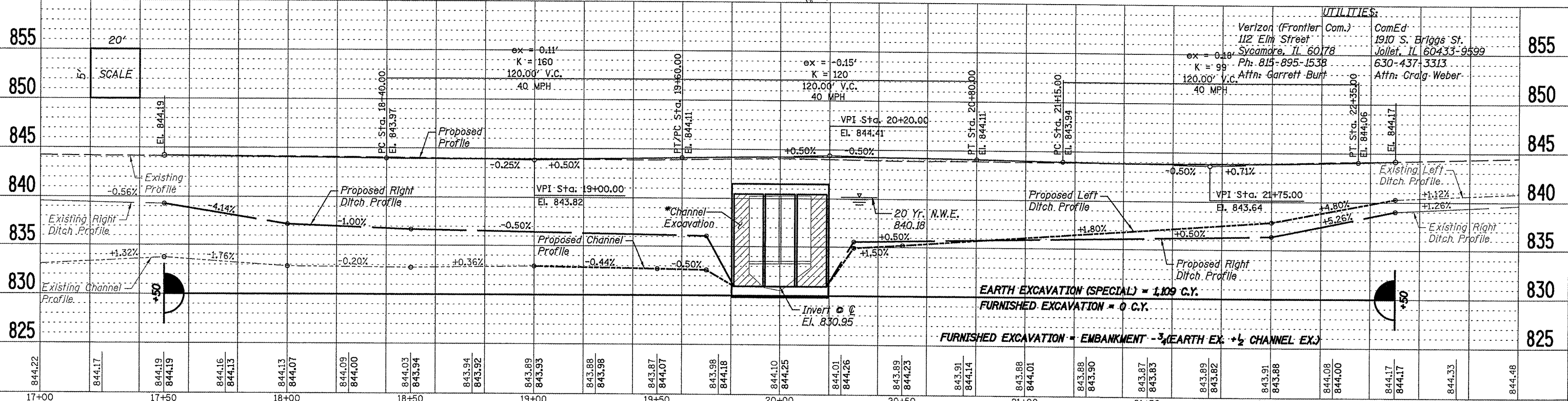
Existing Structure: S.N. 089-5011
A double barrel (12'-0"x7'-0") reinforced concrete box culvert at Sta. 20+00.
Skewed 0°.

*Channel Excavation shall be included in the price for Concrete Box Culverts. (See Special Provisions)

Proposed Structure: S.N. 089-5139
A triple barrel (12'-0"x9'-6") reinforced concrete box culvert at Sta. 20+00.
Skewed 0°.



Call Before You Dig
JULIE
ILLINOIS ONE-CALL SYSTEM
1-800-892-0123



| REVISION | DATE | BY | REMARKS | DRAWN | R.D.A. | CHECKED | B.S.K. | APPROVED | B.K.C. |
|----------|------|----|---------|-------|--------|---------|--------|----------|--------|
| | | | | | | | | | |

FAS 63 (NORTH KENT ROAD) OVER BRANCH OF YELLOW CREEK STATION 20+00

WILLET HOFMANN ASSOCIATES INC.
ENGINEERING ARCHITECTURE LAND SURVEYING
809 EAST 2ND STREET, DIXON, IL 61021-0367
T: 815-284-3381 DESIGN FIRM: #184-00918

STEPHENSON COUNTY

PLAN & PROFILE
STRUCTURE NO. 089-5139
STA. 17+50.00 - STA. 22+50.00

| F.A.S. RTE. | SECTION | COUNTY | TOTAL SHEETS | SHEET NO. |
|--|----------------|--------------------|--------------|-----------|
| 63 | 10-00177-00-BR | STEPHENSON | 15 | 6 |
| WHA# 1119D10 | | CONTRACT NO. 85548 | | |
| FED. ROAD DIST. NO. 7 ILLINOIS FED. AID PROJECT BRS-00631061 | | | | |

FILE = S:\PROJECTS\2010\1119D10_Stephenson_Co_M_Kent_Rd.DESIGN.STRUCT.1119D10_ppkEntRd.dgn