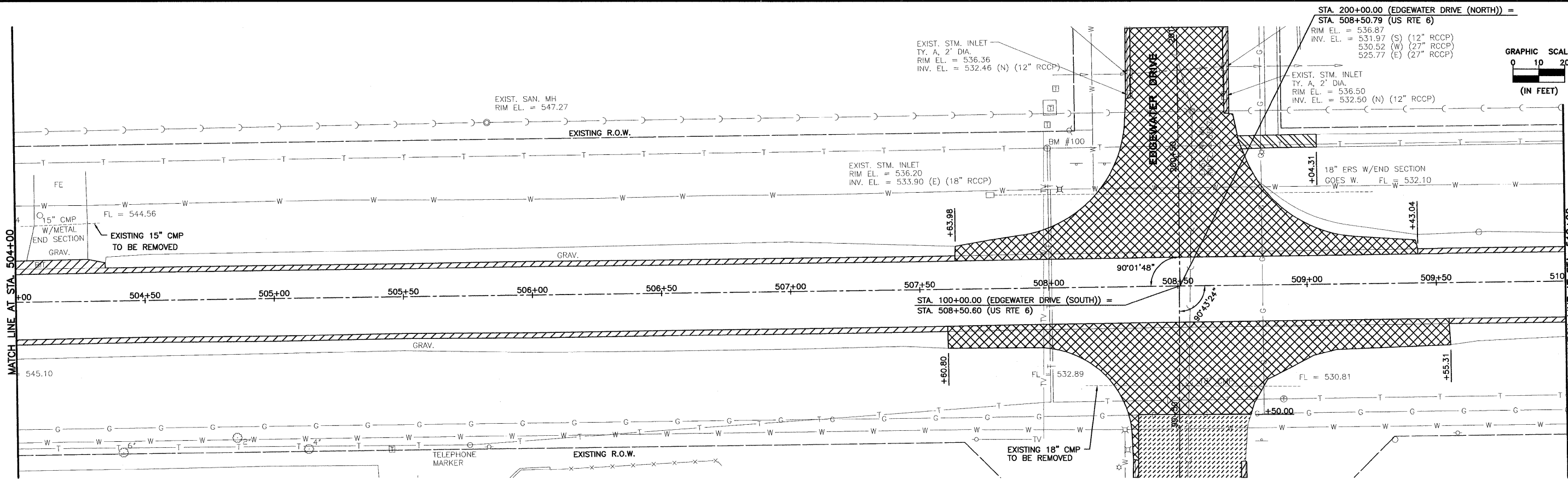
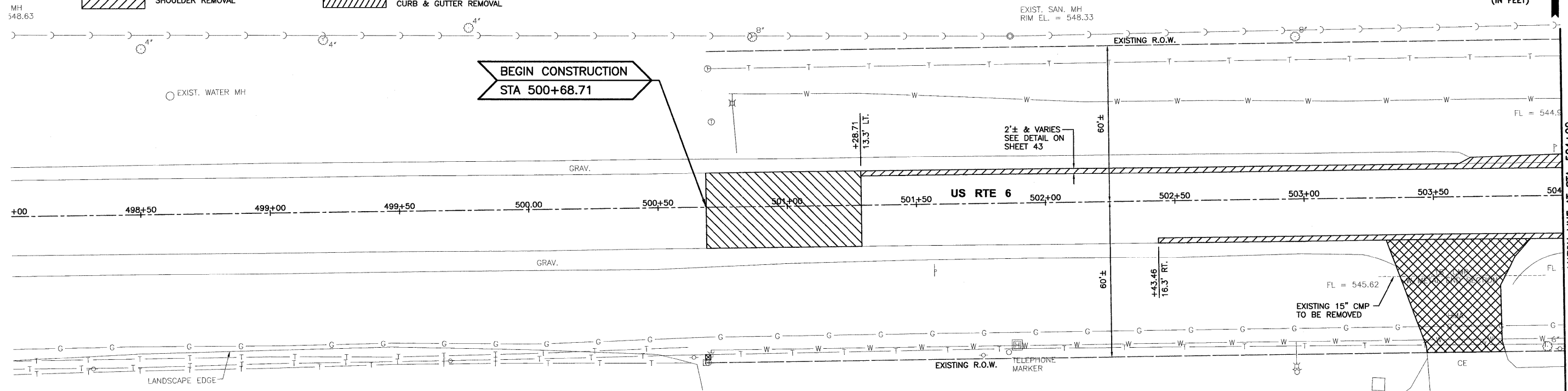
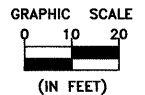


- HOT-MIX ASPHALT SURFACE REMOVAL, BUTT JOINT
- HOT-MIX ASPHALT SURFACE REMOVAL, 1 1/2"
- SHOULDER REMOVAL
- SIDEWALK REMOVAL
- PAVEMENT REMOVAL & DRIVEWAY PAVEMENT REMOVAL
- COMBINATION CONCRETE CURB & GUTTER REMOVAL



CHAMLIN & ASSOCIATES, INC. © 2010
Drawing Name: C:\Users\B\B669-00-Morris-Stu\CAD\PLANS-STU\008-HEM488-310.dwg, Last Modified: Oct 13, 2011 - 9:49am Plotted on: Oct 13, 2011 - 10:04am by nancy

DRAWN BY: CHAMS	REVISIONS			
CHECKED BY: JKC	LEVEL	BY	DATE	DESCRIPTION
DATE: 10/11				

CHAMLIN & ASSOCIATES
PERU MORRIS
ILLINOIS

FAU 5952 (US 6)
SECTION 10-00083-00-TL
CITY OF MORRIS
GRUNDY COUNTY

REMOVAL PLANS
US 6
STA. 500+68.71 TO STA. 510+00

CONTRACT NO. 87486

CURRENT AS OF: 10/11	
SCALE: AS NOTED	SHEET 8
FILE NO.: 6969.00 Y-	OF 70