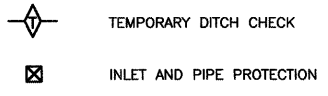
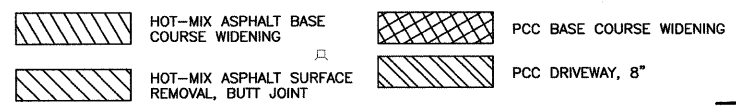
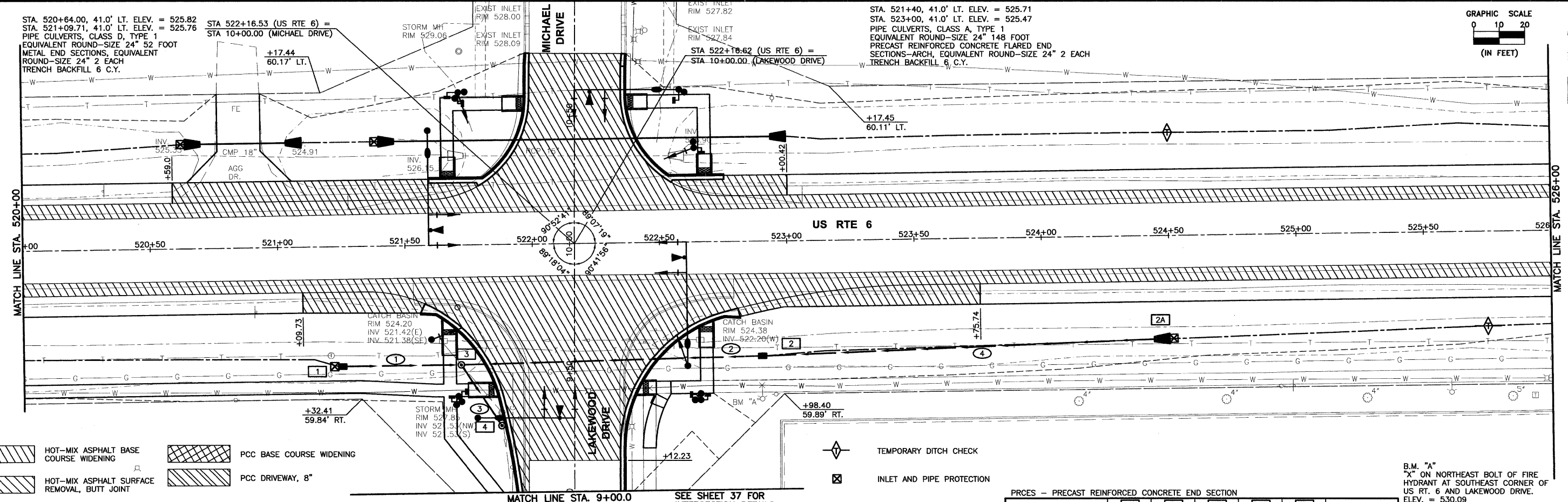
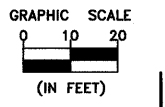


STA. 520+64.00, 41.0' LT. ELEV. = 525.82
 STA. 521+09.71, 41.0' LT. ELEV. = 525.76
 PIPE CULVERTS, CLASS D, TYPE 1
 EQUIVALENT ROUND-SIZE 24" 52 FOOT
 METAL END SECTIONS, EQUIVALENT
 ROUND-SIZE 24" 2 EACH
 TRENCH BACKFILL 6 C.Y.

STA 522+16.53 (US RTE 6) =
 STA 10+00.00 (MICHAEL DRIVE)

STA 522+16.62 (US RTE 6) =
 STA 10+00.00 (LAKEWOOD DRIVE)

STA. 521+40, 41.0' LT. ELEV. = 525.71
 STA. 523+00, 41.0' LT. ELEV. = 525.47
 PIPE CULVERTS, CLASS A, TYPE 1
 EQUIVALENT ROUND-SIZE 24" 148 FOOT
 PRECAST REINFORCED CONCRETE FLARED END
 SECTIONS-ARCH, EQUIVALENT ROUND-SIZE 24" 2 EACH
 TRENCH BACKFILL 6 C.Y.

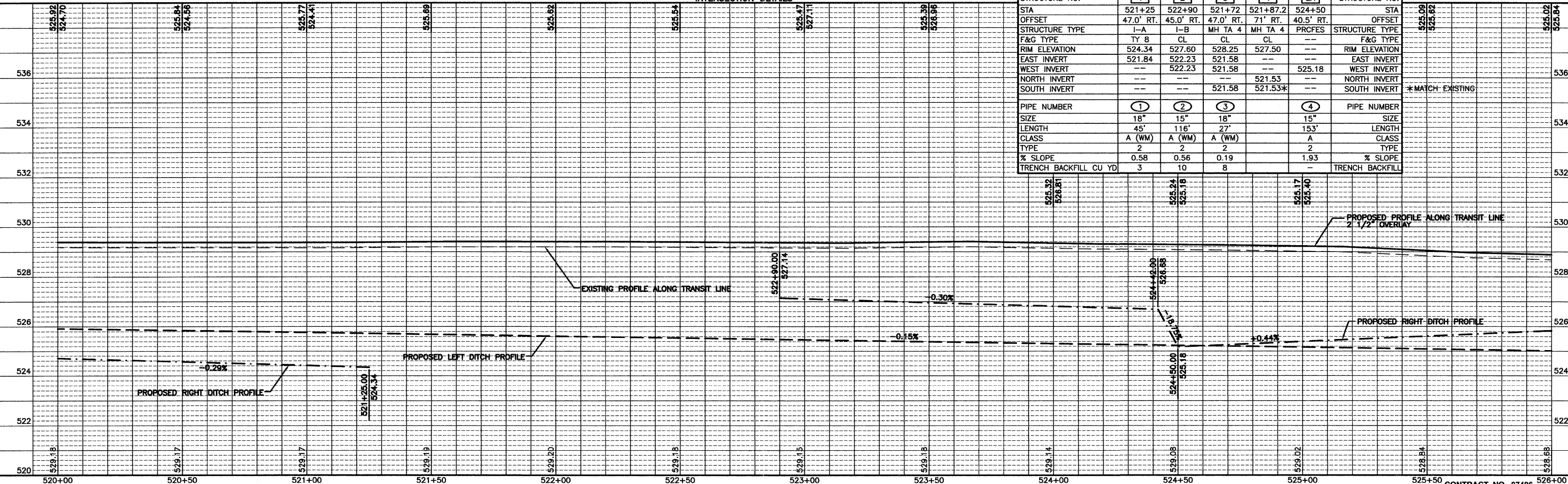


SEE SHEET 37 FOR INTERSECTION DETAILS

B.M. "A"
 "X" ON NORTHEAST BOLT OF FIRE
 HYDRANT AT SOUTHEAST CORNER OF
 US RT. 6 AND LAKEWOOD DRIVE.
 ELEV. = 530.09

PRCES - PRECAST REINFORCED CONCRETE END SECTION

STRUCTURE NO.	1	2	3	4	2A	STRUCTURE NO.
STA	521+25	522+90	521+72	521+87.2	524+50	STA
OFFSET	47.0' RT.	45.0' RT.	47.0' RT.	71' RT.	40.5' RT.	OFFSET
STRUCTURE TYPE	I-A	I-B	MH TA 4	MH TA 4	PRCFES	STRUCTURE TYPE
F&G TYPE	TY 8	CL	CL	CL	---	F&G TYPE
RIM ELEVATION	524.34	527.60	528.25	527.50	---	RIM ELEVATION
EAST INVERT	521.84	522.23	521.58	---	---	EAST INVERT
WEST INVERT	---	522.23	521.58	---	525.18	WEST INVERT
NORTH INVERT	---	---	---	521.53	---	NORTH INVERT
SOUTH INVERT	---	---	521.58	521.53*	---	SOUTH INVERT
PIPE NUMBER	1	2	3	4	---	PIPE NUMBER
SIZE	18"	15"	18"	15"	---	SIZE
LENGTH	45'	116'	27'	153'	---	LENGTH
CLASS	A (WM)	A (WM)	A (WM)	A	---	CLASS
TYPE	2	2	2	2	---	TYPE
% SLOPE	0.58	0.56	0.19	1.93	---	% SLOPE
TRENCH BACKFILL CU YD	3	10	8	---	---	TRENCH BACKFILL



CHAMLIN & ASSOCIATES, INC. © 2010
 Drawing Name: C:\Users\j\Documents\Projects\STUD\PLANS\STUD\PLANS\520-526.dwg Last Modified: Oct 13, 2011 10:30am Plotted on: Oct 14, 2011 8:47am by: jmc

DRAWN BY: CHAMS	LEVEL	BY	DATE	REVISIONS	DESCRIPTION
CHECKED BY: JKC					
DATE: 10/11					

CHAMLIN & ASSOCIATES
 PERU MORRIS ILLINOIS

FAU 5952 (US 6)
 SECTION 10-00083-00-TL
 CITY OF MORRIS
 GRUNDY COUNTY

PLAN AND PROFILE
 US 6
 STA. 520+00 TO STA. 526+00

CONSTRUCTION PLANS
 CURRENT AS OF: 10/11
 SCALE: AS NOTED SHEET 17
 FILE NO.: 6969.00 Y- OF 70
 CONTRACT NO. 87486