
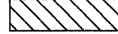
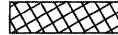



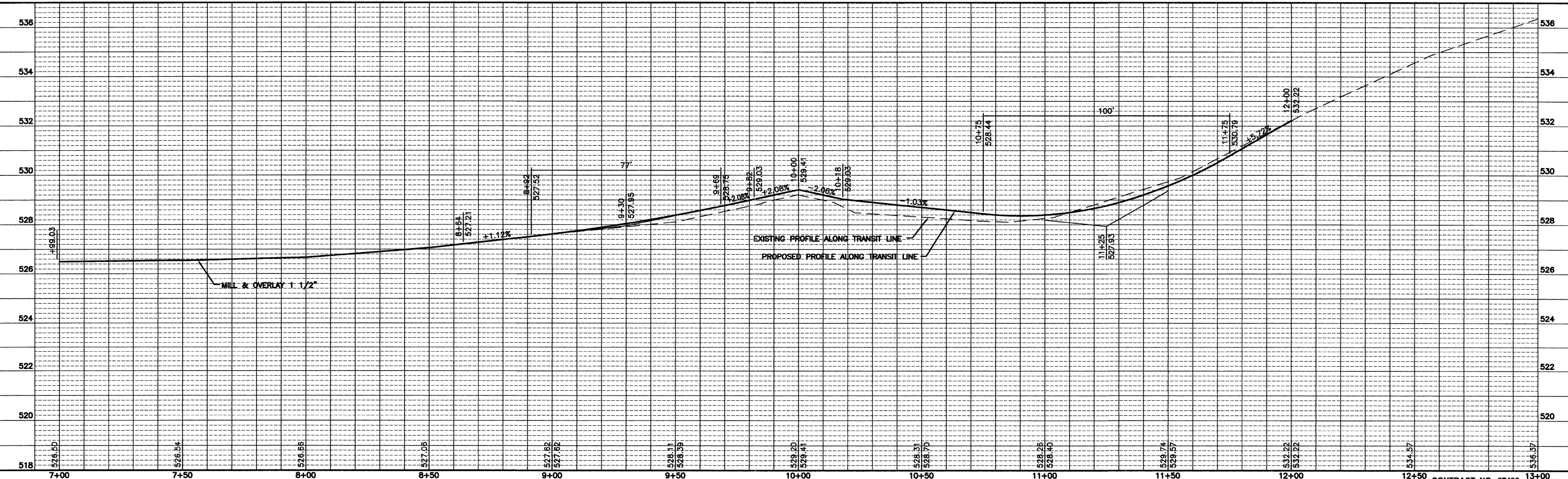
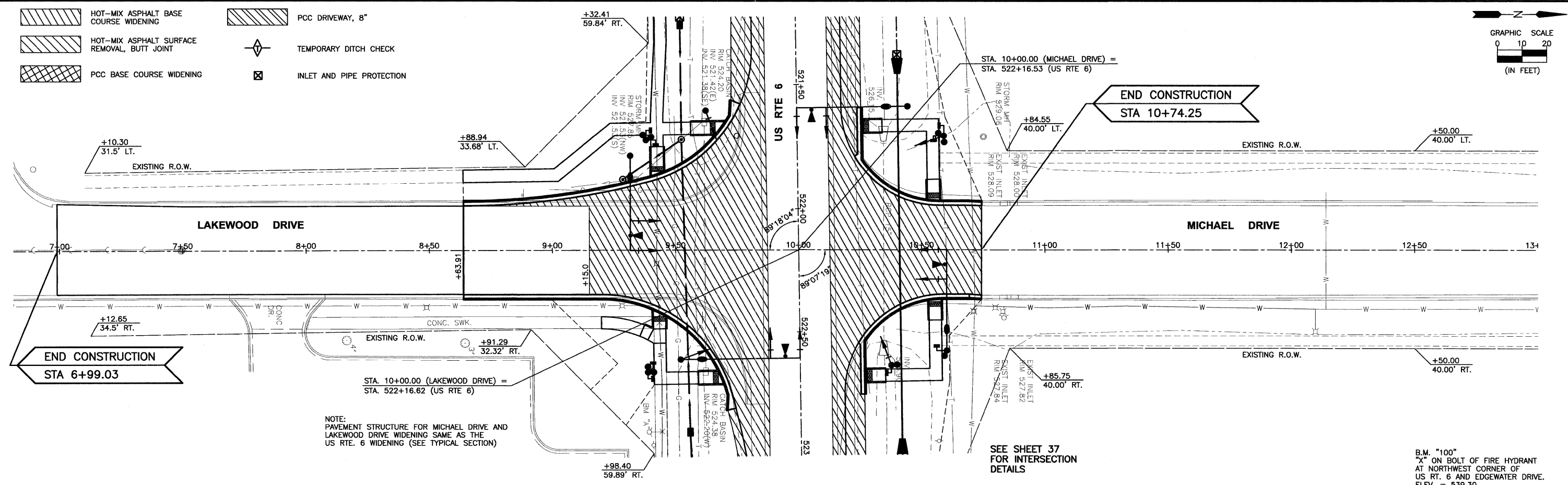
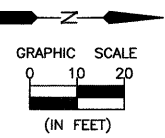


-  HOT-MIX ASPHALT BASE COURSE WIDENING
-  HOT-MIX ASPHALT SURFACE REMOVAL, BUTT JOINT
-  PCC BASE COURSE WIDENING
-  PCC DRIVEWAY, 8"
-  TEMPORARY DITCH CHECK
-  INLET AND PIPE PROTECTION



CHAMBLIN & ASSOCIATES, INC. © 2010
 Drawing Name: C:\Users\j\Documents\6969-10-Morris-Stu\LAKEWOOD.DWG Last Modified: Sep 22, 2011 - 9:39am Plotted on: Oct 13, 2011 - 10:46am by ranaq

DRAWN BY: CHAMS	REVISIONS		
CHECKED BY: JKC	LEVEL	BY	DATE
DATE: 10/11			

CHAMBLIN & ASSOCIATES

PERU MORRIS
ILLINOIS

FAU 5952 (US 6)
SECTION 10-00083-00-TL
CITY OF MORRIS
GRUNDY COUNTY

PLAN AND PROFILE
LAKEWOOD DRIVE

CONSTRUCTION PLANS

CURRENT AS OF: 10/11

SCALE: AS NOTED

FILE NO.: 6969.00 Y-

SHEET 21
OF 70

CONTRACT NO. 87486