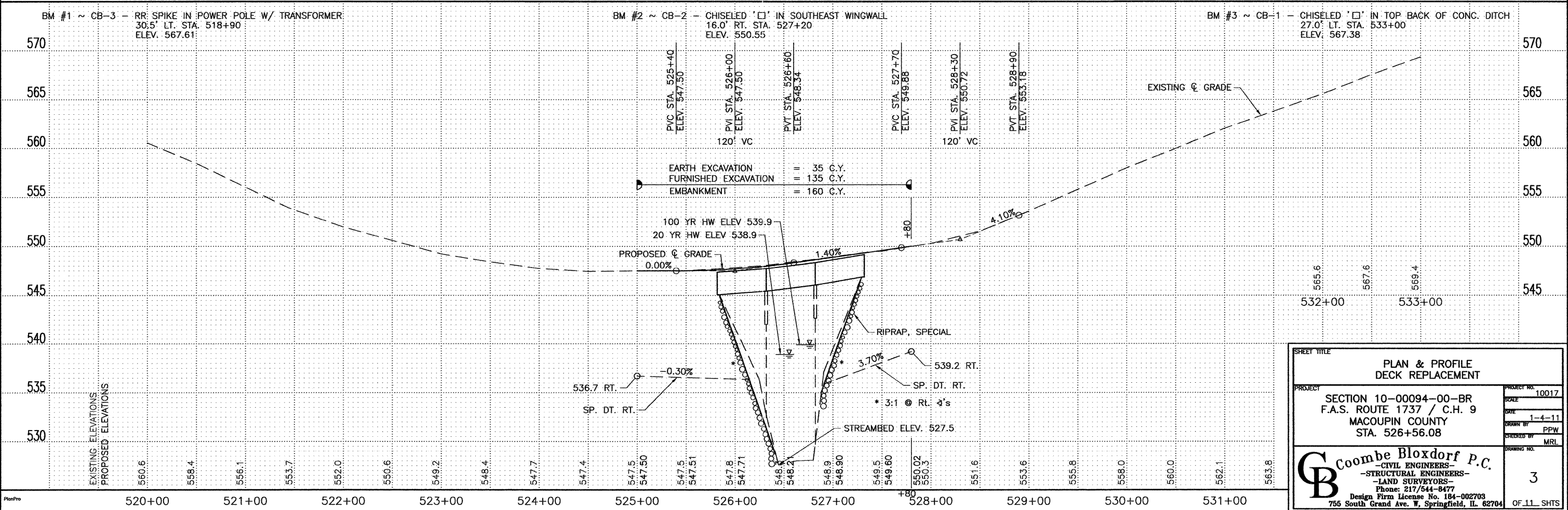
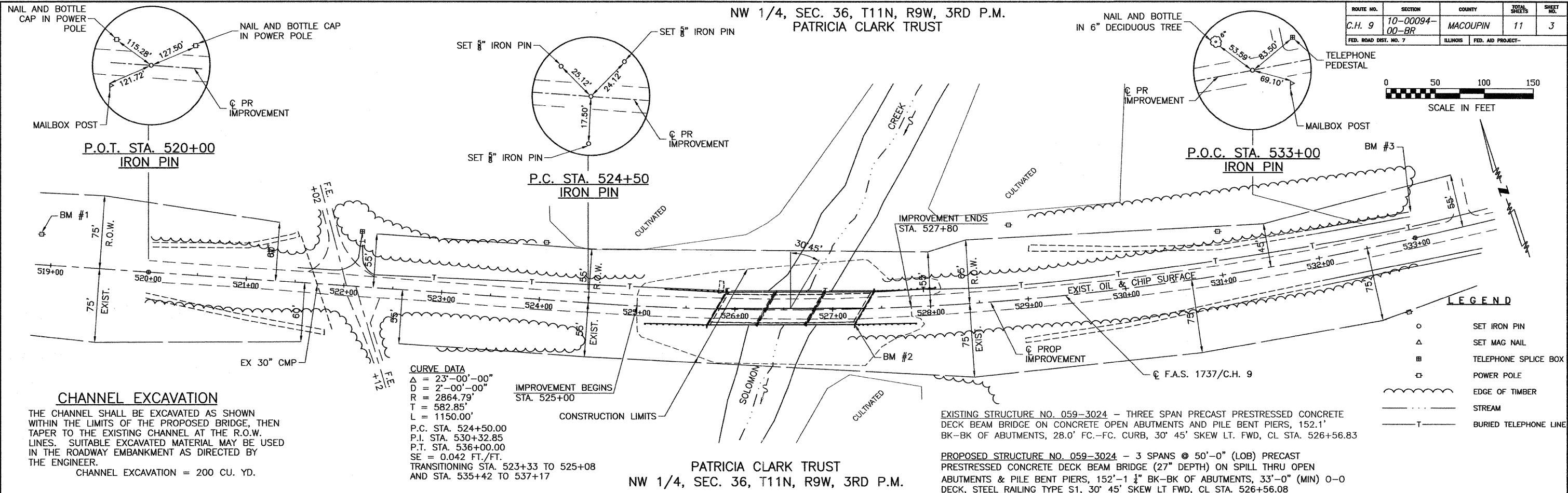
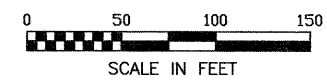


NW 1/4, SEC. 36, T11N, R9W, 3RD P.M.  
PATRICIA CLARK TRUST

ROUTE NO.	SECTION	COUNTY	TOTAL SHEETS	SHEET NO.
C.H. 9	10-00094-00-BR	MACOUPIN	11	3
FED. ROAD DIST. NO. 7		ILLINOIS	FED. AID PROJECT-	



**SHEET TITLE**  
 PLAN & PROFILE  
 DECK REPLACEMENT

**PROJECT**  
 SECTION 10-00094-00-BR  
 F.A.S. ROUTE 1737 / C.H. 9  
 MACOUPIN COUNTY  
 STA. 526+56.08

**PROJECT NO.** 10017  
**SCALE**  
**DATE** 1-4-11  
**DRAWN BY** PPW  
**CHECKED BY** MRL  
**DRAWING NO.** 3

**Coombe Bloxdorf P.C.**  
 CIVIL ENGINEERS-  
 STRUCTURAL ENGINEERS-  
 LAND SURVEYORS-  
 Design Firm License No. 184-002703  
 755 South Grand Ave. W. Springfield, IL 62704

OF 11 SHTS