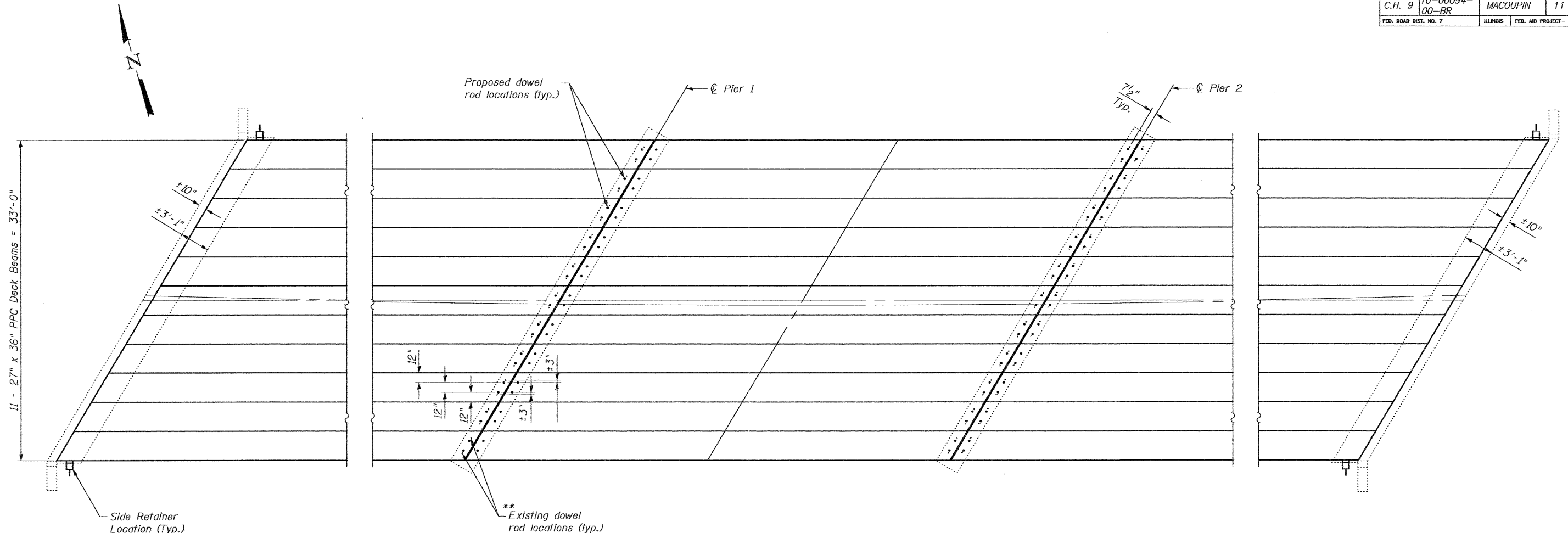


ROUTE NO.	SECTION	COUNTY	TOTAL SHEETS	SHEET NO.
C.H. 9	10-00094-00-BR	MACOUPIN	11	7
FED. ROAD DIST. NO. 7		ILLINOIS	FED. AID PROJECT-	



**PLAN**

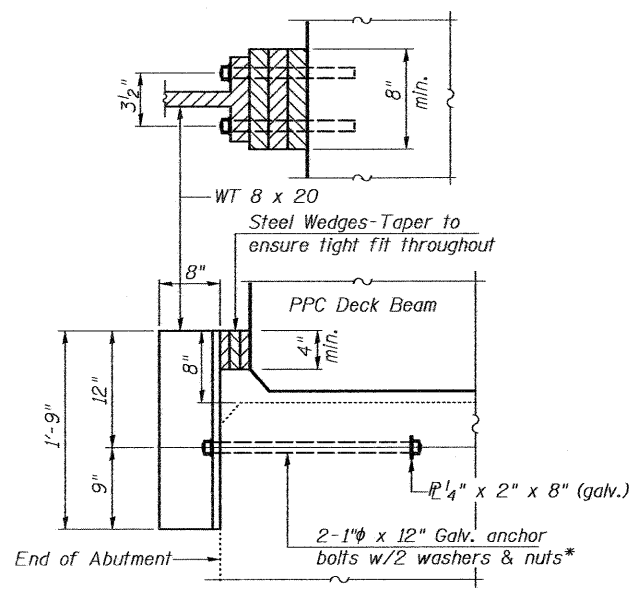
(Showing Existing Substructure and Proposed Deck Beams)

\*\*Burn off flush with existing bearing seat, grind smooth and seal with epoxy. Cost is included in Removal of Existing Superstructure.

**TOTAL BILL OF MATERIAL**

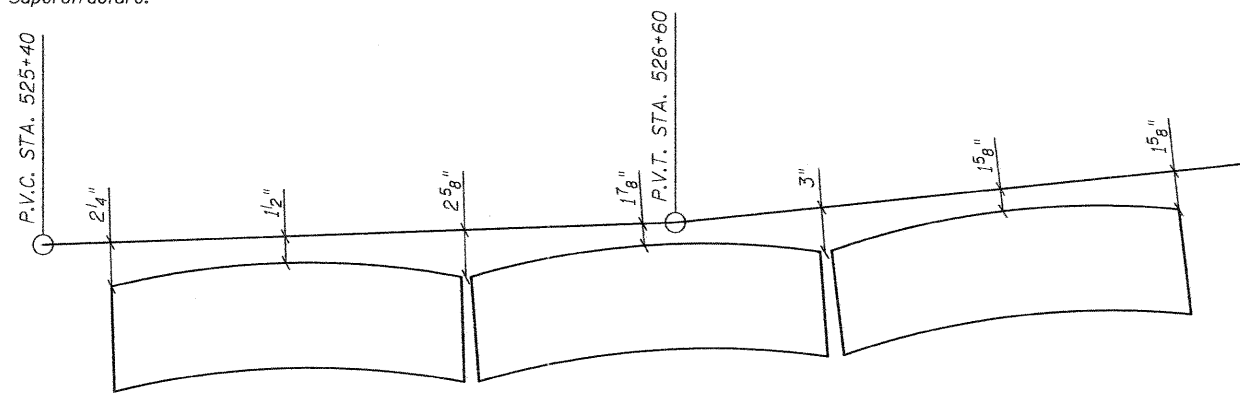
ITEM	UNIT	TOTAL
Asbestos Bearing Pad Removal	Each	22
Waterproofing Membrane System	Sq. Yd.	551

Notes:  
 See Plan View on Sheet 6 of 11 for bearing pad layout.  
 The side retainers and steel wedges shall have a tight fit against the side of the deck beams and shall be in place prior to grouting the shear keys.  
 Cost of anchor bolts and structural steel required for the side retainers shall be included in the cost of the Precast Prestressed Concrete Deck Beams. The side retainers shall be galvanized after shop fabrication according to AASHTO M 111 and ASTM 385. Anchor bolts, plate washers and nuts shall be galvanized according to AASHTO M 232.



**SIDE RETAINER DETAIL**

\*Anchor bolts shall be approved threaded rods placed in drilled holes and grouted in place.



**ANTICIPATED HMA WEARING SURFACE PROFILE**

(For Information Only)

PLOT DATE = 10/12/2011  
 FILE NAME = ..\bridge-neg\02-details.dgn  
 PLOT SCALE = 5/4000000 1" / 10'  
 USER NAME = JPL

SHEET TITLE		SUPERSTRUCTURE DETAILS	
PROJECT	F.A.S. ROUTE 1737 / C.H. 9 SECTION 10-00094-00-BR MACOUPIN COUNTY STATION 526+56.08	PROJECT NO.	10017
DATE	8/26/201	DESIGN BY	
DRAWN BY	CFC	CHECKED BY	MRL
DRAWING NO.	7		
Coombe-Bloxdorf P.C. -CIVIL ENGINEERS- -STRUCTURAL ENGINEERS- -LAND SURVEYORS- Design Firm License No. 184-002703		OF 11 SHTS	