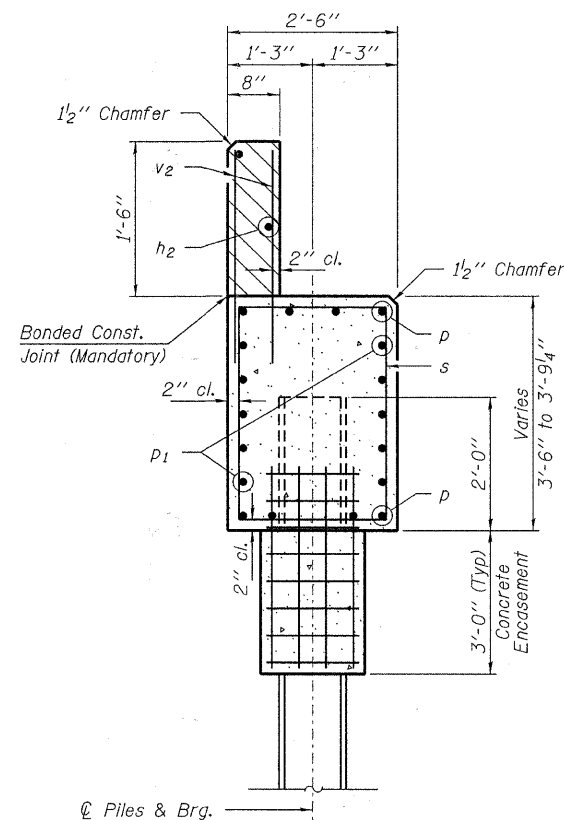
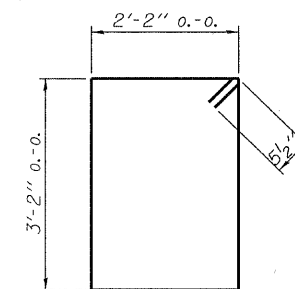


PLAN

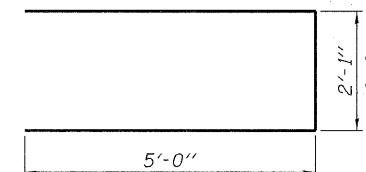


SECTION A-A

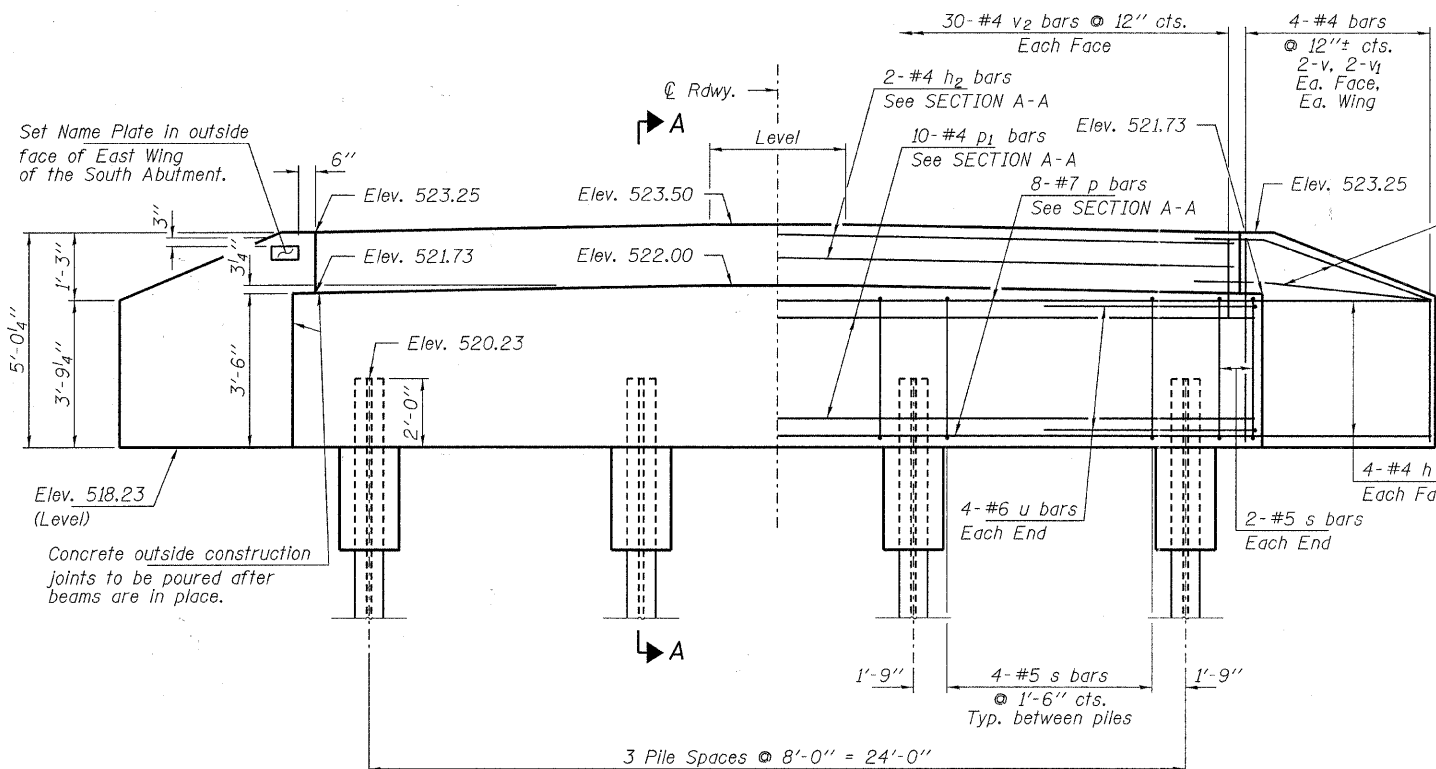
Hatched area to be poured after beams are in place.



BAR s



BAR u



ELEVATION

Note: Extend h bars into abutment cap.

Fan 2-#4 h bars (B.F.)
Fan 2-#4 h1 bars (F.F.)
Each Wing
Bend in field.

PILE DATA

Type ----- Steel HP10x42
No. Req'd. (2. Abuts.) ----- *8
Factored Resistance Available (Rf) ----- 184 Kips/Pile
Nominal Required Bearing (Rn) ----- 335 Kips/Pile
Est. Length ----- 25 Ft/Pile

Notes: * Includes one test pile to be driven in permanent a location at the North Abutment.

The Steel H-Piles shall be according to AASHTO M270 Grade 50.

The test piles shall be driven to 110 percent of the Nominal Required Bearing Indicated in the pile data information.

BILL OF MATERIAL - 2 ABUTS.

| BAR | NO. | SIZE | LENGTH | SHAPE |
|-------------------------|-----|------|---------|-------|
| h | 40 | #4 | 4'-9" | — |
| h1 | 8 | #4 | 3'-3" | — |
| h2 | 4 | #4 | 29'-2" | — |
| p | 16 | #7 | 29'-2" | — |
| p1 | 20 | #4 | 29'-2" | — |
| s | 32 | #5 | 11'-7" | □ |
| u | 16 | #6 | 12'-1" | — |
| v | 16 | #4 | 4'-6" | — |
| v1 | 16 | #4 | 3'-6" | — |
| v2 | 120 | #4 | 2'-4" | — |
| Concrete Structures | | | Cu. Yd. | 24.0 |
| Concrete Encasement | | | Cu. Yd. | 2.8 |
| Reinforcement Bars | | | Pound | 2,520 |
| Steel Piles HP10x42 | | | Foot | 175 |
| Test Pile Steel HP10x42 | | | Each | 1 |
| Name Plates | | | Each | 1 |

FILE NAME = 100098-sh4-bridge.dgn
USER NAME =
DESIGNED - A.S.L.
CHECKED - S.W.M.
DRAWN - D.A.B.
CHECKED - S.W.M.
PLOT SCALE =
PLOT DATE = 10/27/2011

DESIGNED - A.S.L.
CHECKED - S.W.M.
DRAWN - D.A.B.
CHECKED - S.W.M.
REVISOR -
REVISOR -
REVISOR -
REVISOR -

**STATE OF ILLINOIS
EFFINGHAM COUNTY HIGHWAY DEPARTMENT**

**ABUTMENTS
STRUCTURE NO. 025-3323**

SHEET NO. 6 OF 8 SHEETS

| | | | | |
|-----------------------------|----------------|-----------|--------------------|-----------|
| T.R. | SECTION | COUNTY | TOTAL SHEETS | SHEET NO. |
| 266 | 10-13112-00-BR | EFFINGHAM | 21 | 19 |
| UNION ROAD DISTRICT | | | CONTRACT NO. 95669 | |
| [ILLINOIS] FED. AID PROJECT | | | | |