

**GENERAL NOTES:**

THIS SECTION SHALL BE CONSTRUCTED IN ACCORDANCE WITH THE PLANS, SPECIAL PROVISIONS AND "STANDARD SPECIFICATIONS FOR ROAD AND BRIDGE CONSTRUCTION", ADOPTED JANUARY 1, 2012.

THE WORK INVOLVED ON THIS SECTION CONSISTS OF THE REMOVAL OF THE EXISTING STRUCTURE, THE CONSTRUCTION OF A 70 FOOT LONG SINGLE SPAN PRECAST, PRESTRESSED CONCRETE DECK BEAM BRIDGE, EARTH APPROACHES, AGGREGATE SURFACE COURSE AND OTHER MISCELLANEOUS ITEMS NECESSARY TO COMPLETE THIS SECTION.

ALL ELEVATIONS ARE BASED ON U.S.G.S. MEAN SEA LEVEL DATUM.

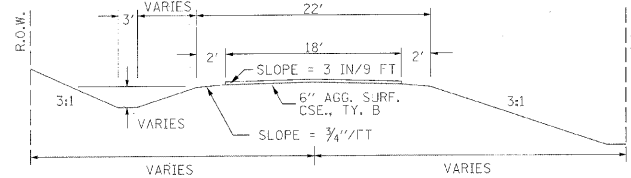
IT SHALL BE THE CONTRACTOR'S RESPONSIBILITY TO CONTACT ALL THE UTILITIES, AFFECTING THE PROJECT, PRIOR TO CONSTRUCTION.

**NOTE: CONSTRUCTION TRANSITION**  
 STA. 1+75 TO STA 2+25  
 STA 7+25 TO STA 7+75

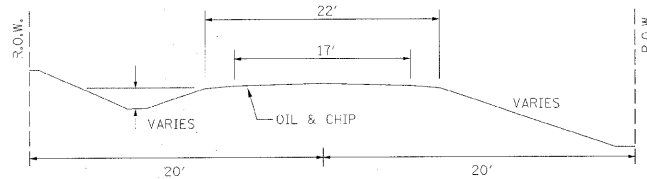
ALL QUANTITIES ARE INCLUDED IN THE PROPOSAL

TR	SECTION	COUNTY	TOTAL SHEETS	SHEET NO.
112	09-09126-00-BR	WHITE	12	2
FED. ROAD DIST. NO. 9		ILLINOIS		BROAD RUN
PROJECT # BROS-1930501		CONTRACT # 99445		
323 W. 3RD ST. P.O. BOX 160 MT. CARMEL, IL 62863 PHONE: (618)-262-8651 FAX: (618)-263-3327				
405 W. STATE ST SUITE 1 PRINCETON, IN 47670 PHONE: (812)-386-7611 FAX: (812)-385-2812				

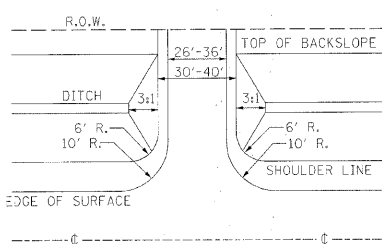
**TYPICAL CROSS SECTION PROPOSED**



**TYPICAL CROSS SECTION EXISTING**



**FIELD ENTRANCE DETAIL**



NOTE: CONSTRUCT SPECIAL DITCH

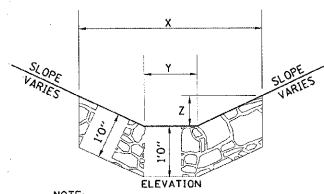
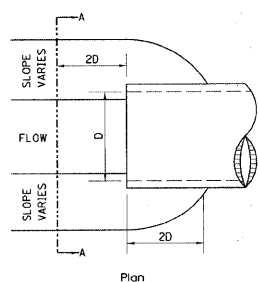
STA 2+00 TO STA 4+75 LT  
 STA 2+00 TO STA 4+32 RT  
 STA 5+70 TO STA 7+50 LT  
 STA 5+25 TO STA 7+50 RT

NOTE: CONSTRUCT STONE LINED DITCH

STA 4+25 TO STA 4+75 LT (0.62 TON/LIN FT)  
 STA 4+17 TO STA 4+32 RT (0.62 TON/LIN FT)  
 STA 5+70 TO STA 6+20 LT (0.62 TON/LIN FT)  
 STA 5+25 TO STA 5+59 RT (0.62 TON/LIN FT)  
 92 TON STONE LINED DITCH.

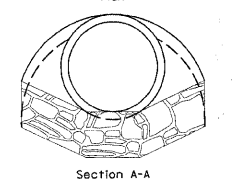
SEE STONE LINED DITCH DESIGN.

**STONE LINED DITCH DESIGN**

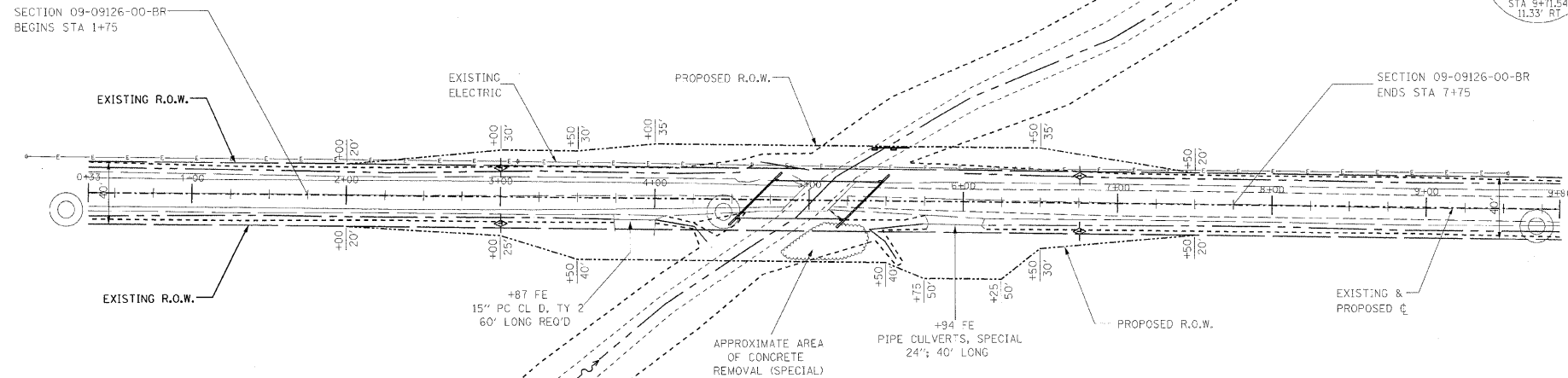
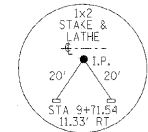
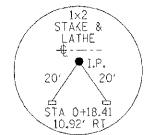


NOTE:

BOTTOM OF DITCH	SLOPE		
2 FT	1 1/2:1	2:1	3:1
X = 5 FT	6 FT	8 FT	
Y = 2 FT	2 FT	2 FT	
Z = 1 FT	1 FT	1 FT	
	0.40	0.48	0.62 TON/LIN. FT



NOTE: FOR PLACEMENT, QUALITY GRADATION AND OTHER MISCELLANEOUS REQUIREMENTS FOR STONE LINED DITCH-SEE SPECIAL PROVISIONS.

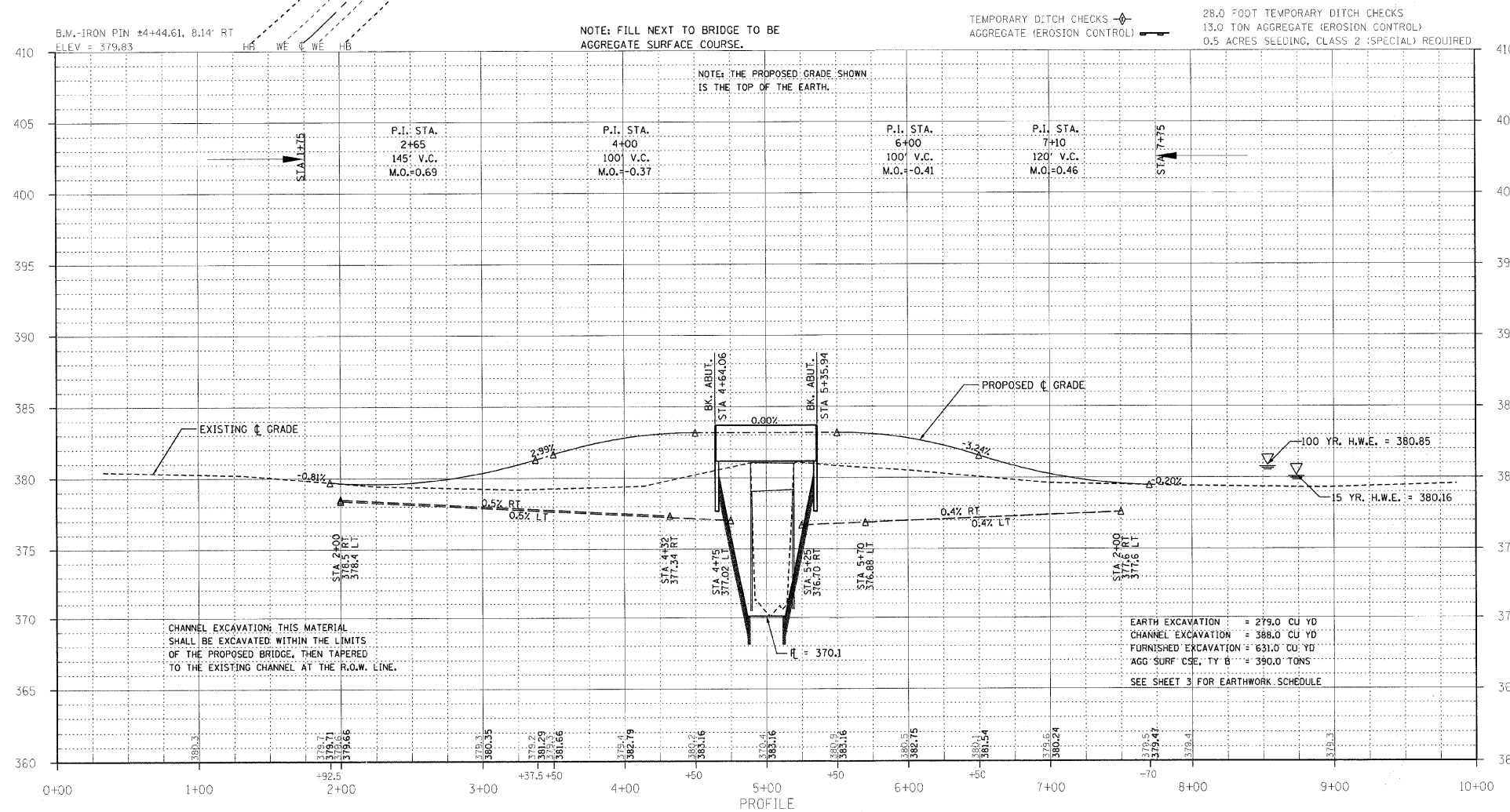


EXISTING BRIDGE STA 5+06.8; STRUCTURE NUMBER: 097-3057  
 22' LONG SINGLE SPAN CONCRETE DECK BEAM BRIDGE WITH WOOD CAPS, WOOD MIDWALLS, AND WOODEN PILING.

ONE (1) EACH-REMOVAL OF EXISTING STRUCTURES ALLOWED IN THIS PROPOSAL.

PROPOSED STRUCTURE: NO. 097-3270, STA 5+00,  
 A 70' LONG SINGLE SPAN P.P.C.D.B. BRIDGE WITH 27" DEPTH BEAMS, SPILL THROUGH TYPE ABUTMENTS, 24' WIDTH, 45° LT. FWD SKEW.

SEE SHEETS 5-12 FOR THE DESIGN AND BILL OF MATERIALS.



PROFESSIONAL DESIGN FIRM  
 LAND SURVEY &  
 PROFESSIONAL  
 ENGINEERING  
 CORPORATION



AARON M. MEFFORD  
 NAME  
 SIGNATURE  
 10-15-11  
 DATE  
 11-30-13  
 EXPIRES

T.R. 112  
 OVER BROAD RUN  
 WHITE COUNTY, ILLINOIS

SHEET TITLE:

PLAN & PROFILE

SCALE: VARIES

BY: AMM

DATE: 10/11

REV:

2 OF 12 SHEETS

SHEET NO.

2