

STATE OF ILLINOIS  
DEPARTMENT OF TRANSPORTATION  
DIVISION OF HIGHWAYS

**PROPOSED  
HIGHWAY PLANS**

VARIOUS ROUTE  
SECTION D4 WEED SPRAYING 2017 (OR)

TYPE of IMPROVEMENT: WEED SPRAYING  
VARIOUS COUNTIES

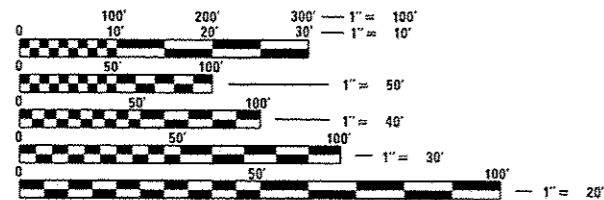
F.A.P. RTE.	SECTION	COUNTY	TOTAL SHEETS	SHEET NO.
	D4 WEED SPRAYING 2017 (OR)	VARIOUS	14	1
		ILLINOIS	CONTRACT NO. 68D33	

INDEX OF SHEETS:

- 1 COVER SHEET
- 2 SUMMARY OF QUANTITIES
- 3-5 LOCATION MAP
- 6-13 SCHEDULE OF QUANTITIES
- 14 HERBICIDE DOSAGE CHART

STANDARDS

- 701001-02      701301-04
- 701006-05      701311-03
- 701011-04      701426-09
- 701101-05      701428-01
- 701106-02      701901-06

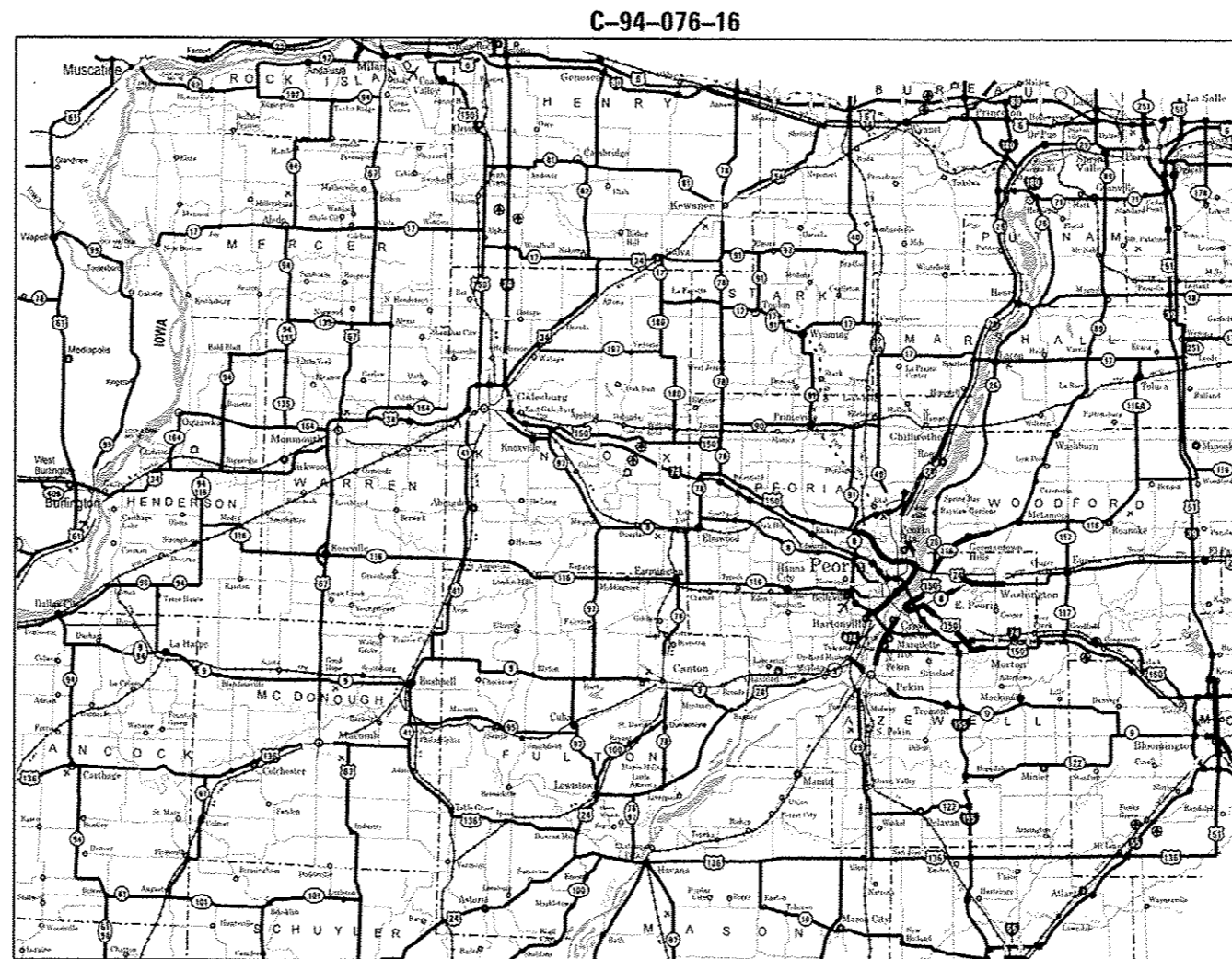


FULL SIZE PLANS HAVE BEEN PREPARED USING STANDARD ENGINEERING SCALES. REDUCED SIZED PLANS WILL NOT CONFORM TO STANDARD SCALES. IN MAKING MEASUREMENTS ON REDUCED PLANS, THE ABOVE SCALES MAY BE USED.

J.U.L.I.E.  
JOINT UTILITY LOCATION INFORMATION FOR EXCAVATION  
1-800-892-0123  
OR 811

PROJECT ENGINEER: CHRISTOPHER MAUSHARD (309) 671-3453  
PROJECT MANAGER: RAYMOND SAMARA (309) 671-3460  
LANDSCAPE ARCHITECT: JIM ALWILL (309) 264-1950

CONTRACT NO. 68D33



AREA TO BE SPRAYED: 3626 ACRES

D-94-044-16



LOCATION OF SECTION INDICATED THUS: -

IMPROVEMENT IS DISTRICT WIDE

STATE OF ILLINOIS  
DEPARTMENT OF TRANSPORTATION  
DIVISION OF HIGHWAYS

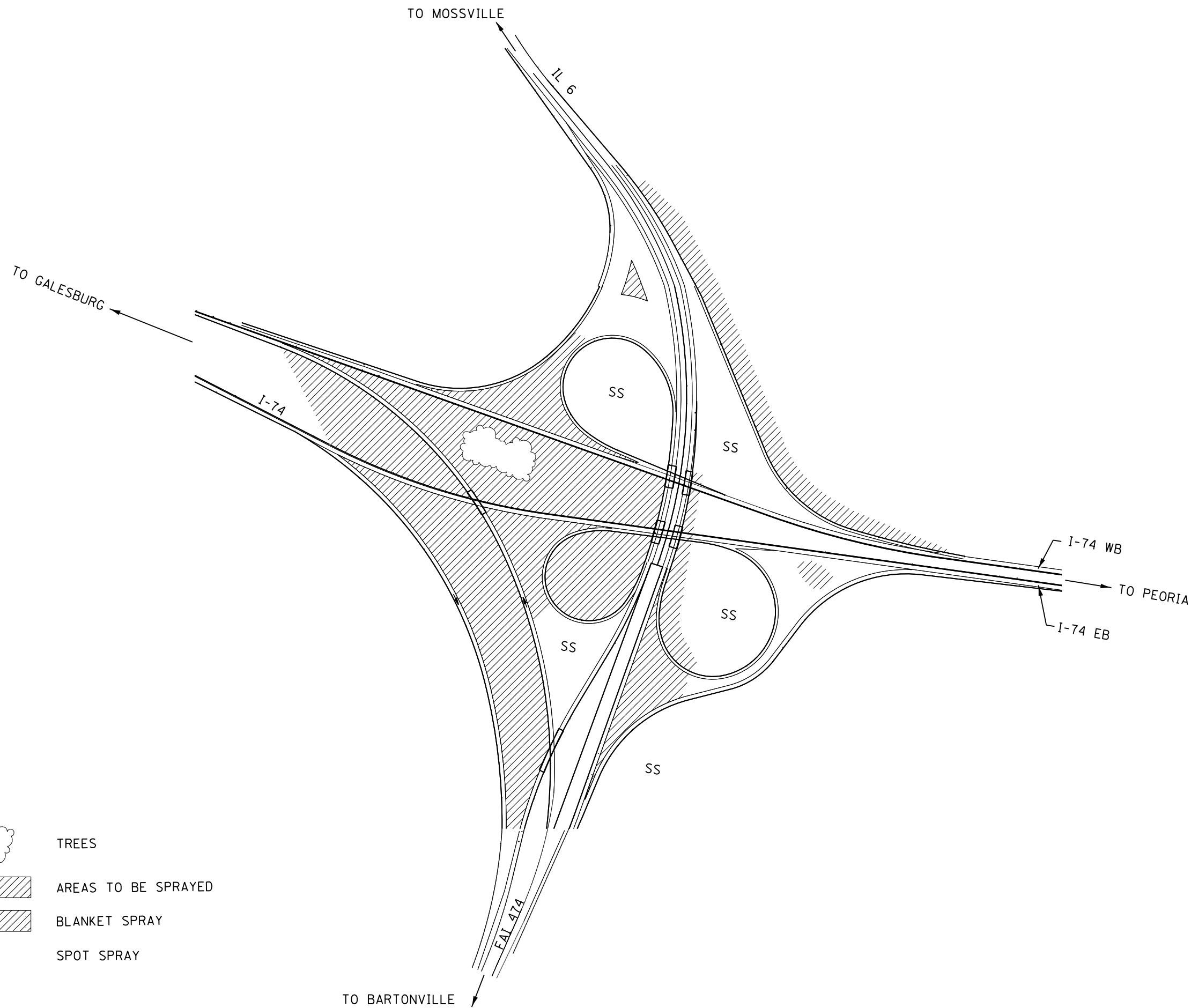
SUBMITTED *October 17 2016*  
*Paul A. James*  
DEPUTY DIRECTOR OF HIGHWAYS, REGION ENGINEER


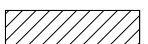
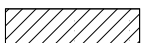
*Dec 9 2016*  
*Harmon M. Addis, PE*  
ENGINEER OF DESIGN AND ENVIRONMENT

*Dec 9 2016*  
*Overton, PE*  
DIRECTOR OF HIGHWAYS, CHIEF ENGINEER

PRINTED BY THE AUTHORITY  
OF THE STATE OF ILLINOIS





-  TREES
-  AREAS TO BE SPRAYED
-  BLANKET SPRAY
- SS SPOT SPRAY

NOT TO SCALE

FILE NAME = D468033-sheets.dgn	USER NAME = lababidism	DESIGNED -	REVISED -
		DRAWN -	REVISED -
	PLOT SCALE = 100.0000' / in.	CHECKED -	REVISED -
Default	PLOT DATE = 10/27/2016	DATE -	REVISED -

**STATE OF ILLINOIS  
DEPARTMENT OF TRANSPORTATION**

**LOCATION MAP  
I-74, I-474, IL 6 INTERCHANGE**

SCALE: SHEET OF SHEETS STA. TO STA.

F.A.P. RTE.	SECTION	COUNTY	TOTAL SHEETS	SHEET NO.
VAR.	D4 WEED SPRAYING 2017 (OR)	VARIOUS	14	3
CONTRACT NO. 68D33				
ILLINOIS FED. AID PROJECT				



DO NOT SPRAY IN THESE FOUR AREAS

FILE NAME =  
D468033-sheets.dgn  
Default

USER NAME = lababidism  
PLOT SCALE = 100.0000' / 1in.  
PLOT DATE = 10/27/2016

DESIGNED -  
DRAWN -  
CHECKED -  
DATE -

REVISED -  
REVISED -  
REVISED -  
REVISED -

**STATE OF ILLINOIS  
DEPARTMENT OF TRANSPORTATION**

**LOCATION MAP  
I-74 SPOON RIVER REST AREA**  
SCALE: SHEET OF SHEETS STA. TO STA.

F.A.P. RTE.	SECTION	COUNTY	TOTAL SHEETS	SHEET NO.
VAR.	D4 WEED SPRAYING 2017 (OR)	VARIOUS	14	4
ILLINOIS FED. AID PROJECT			CONTRACT NO. 68D33	



SPRAY EDGE  
OF BRUSH



I-74 / GALE AV. INTERCHANGE



TO PEORIA

CANADA THISTLE  
AND TEASLE  
VERY STEEP  
SPRAY BY HAND



US 150 / IL 116 INTERCHANGE

FILE NAME = D468033-sheets.dgn	USER NAME = lababidism	DESIGNED -	REVISED -
Default	PLOT SCALE = 100.0000' / 1in.	DRAWN -	REVISED -
	PLOT DATE = 10/27/2016	CHECKED -	REVISED -
		DATE -	REVISED -

STATE OF ILLINOIS  
DEPARTMENT OF TRANSPORTATION

LOCATION MAP				
I-74 / GALE AV. AND US 150 / IL 116 INTERCHANGES				
SCALE:	SHEET	OF	SHEETS	STA. TO STA.

F.A.P. RTE.	SECTION	COUNTY	TOTAL SHEETS	SHEET NO.
VAR.	D4 WEED SPRAYING 2017 (OR)	VARIOUS	14	5
CONTRACT NO. 68D33				
ILLINOIS FED. AID PROJECT				

ROUTE	TEAM SECTION	LOCATION		COUNTY	APPROX. MILES	APPROX. ACRES		APPROX. OUNCES		NOTES
						ON-RD. *	OFF-RD.	ON-RD. *	OFF-RD.	
US 24	441	US 24	Washington Bypass to 5 Mi. W of IL 117	TAZEWELL	15		10		60	SS, PR **
US 24	441	WB US 24	RR Br. To Tazewell Co. Line	TAZEWELL			3		18	SS, PR + +
US 24	441	WB US 24	Tazewell Co. Line to Dee-Mack Rd.	TAZEWELL			5		30	SS
US 24	441	WB US 24	EW Main St.	TAZEWELL			5		30	SS
US 24	441	WB US 24	E of Nofsinger Rd.	TAZEWELL			3		18	SS
US 24	441	WB US 24	0.5 Mi. W of Cummings	TAZEWELL			2		12	SS
US 24	441	WB US 24	Cummings to Spring Creek	TAZEWELL			2		12	SS
US 24	441	WB US 24	Bus. Rtes. 8/24 ( and overpass)	TAZEWELL			30		180	SS/BS(HEAVY)
BUS. 24/8	441	SB BUS. 24	McClugage Rd.	TAZEWELL			20		120	BS
24/8	441	Washington RD.	School St. to N.Cummnings Ln.	TAZEWELL			40		240	BS
US 24	441	WB US 24	Rt. 8 to Grange Rd.	TAZEWELL			10		70	SS, CANADA THSL
US 24	441	EB US 24	US 150 to I.C.C.	TAZEWELL			40		240	SS
US 24	441	EB US 24	College Dr. to Rt. 8	TAZEWELL			10		12	SS
US 24	441	EB US 24	Rt. 8 to Spring Creek Rd.	TAZEWELL			5		30	SS
US 24	441	EB US 24	Spring Creek Rd. to Cummings	TAZEWELL			10		60	SS
US 24	441	EB US 24	Cummings to Nofsinger	TAZEWELL			5		30	SS
US 24	441	EB US 24	Nofsinger to Main St.	TAZEWELL			10		60	SS, PR + +
US 24	441	EB US 24	Main to Dieble	TAZEWELL			10		60	SS, PR + +
US 24	441	EB US 24	Dieble to Dee-Mack	TAZEWELL			10		60	SS, PR + +
US 24	441	EB US 24	Woodford Co. Line to Cruger Rd.	TAZEWELL			5		30	SS, PR + +
US 24	441	150 /116	Interchange US 150 /IL 116	TAZEWELL	Brush		80		480	BS, TSL, THSL
I-155	441		At I-74 MM 100	TAZEWELL			110		660	SS
I-155	441		MM 31.5 SB	TAZEWELL			1		6	SS
I-155	441		At MM 31 Exit	TAZEWELL			20		120	SS, PR
I-155	441		MM 30.9-0 SB	TAZEWELL			1		6	SS
I-155	441		MM 28 Exit	TAZEWELL						NS
I-155	441		MM 27.5-26.1 SB	TAZEWELL						NS
I-155	441		At MM 25 Exit	TAZEWELL						NS
I-155	441		MM 24.5-22.5 SB	TAZEWELL						SS, PR
<b>SUB-TOTAL</b>									<b>2644</b>	

\*\* Area has very good prairie planting. Spot spray teasle colonies and individual prouts only. Absolutely NO blanket spray

+ + Engineer must be present during spray

### Legend

SS = Spot Spraying	NS = No Spray
BR = Brush	Wet = Area is Seasonally Wet
BS = Blanket Spraying	PR = Prairie - Consult with R.E.
SS* = May Require Hand Spray /Back Pack	Edges = Spray mowed edge only & consult with R.E.
TSL = Teasle	Heavy = Heavy Infestation
THSL = Thistle	SRRA = Spoon River Rest Area
CV = Crown Vetch	STP = Steep Hillside
FL = Fence Line	(*) = For Information Only

### Notes:

1. Areas not accessible by spraying will be hand-sprayed with spray gun reaching at least 125 feet.
2. Approximate acres of hand-spraying equals 25 acres.
3. Spray rigs shall be equipped with high-flotation tires to access soft infields.
4. Non-working equipment shall be repaired immediately with no additional time allotted to the contractor for repairs.



ROUTE	TEAM SECTION	LOCATION	COUNTY	APPROX. MILES	APPROX. ACRES		APPROX. OUNCES		NOTES
					ON-RD. *	OFF-RD.	ON-RD. *	OFF-RD.	
I-155	441	MM 11-11.5 SB	TAZEWELL			1		6	SS
I-155	441	At Exit 10	TAZEWELL			4		24	SS
I-155	441	MM 10.1 NB Ramp	TAZEWELL			3		8	SS, FL
I-155	441	MM 10.2-10.7 NB	TAZEWELL			5		30	SS
I-155	441	MM 11.5-11.8 NB	TAZEWELL			3		18	SS
I-155	441	MM 12-14.9 NB	TAZEWELL			10		60	SS
I-155	441	MM 15-16 NB	TAZEWELL	1		10		60	SS
I-155	441	MM 16.1-17 NB	TAZEWELL	1		5		30	SS
I-155	441	MM 18-19 NB	TAZEWELL	1		10		60	SS, FL
I-155	441	MM 19.1-20 NB	TAZEWELL	1		15		90	SS
I-155	441	MM 20-22 NB	TAZEWELL	2		1		6	SS, FL
I-155	441	MM 22.5-25.1 NB	TAZEWELL	3		NO SPRAY MM 22-29 (NB & SB)			NS
I-155	441	MM 26-27.9 NB	TAZEWELL	2					NS
I-155	441	At Exit 29	TAZEWELL			10		60	STP, SS
I-155	441	MM 30.1-30.9 NB	TAZEWELL	1		20		120	BS EXIT
I-155	441	BRICH WOOD EXIST INFIELD	TAZEWELL	1		5		30	BS
I-155	441	MM 31 Entrance Ramp	TAZEWELL			5		30	SS
IL 117	441	IL 117 NB 1 Mile N of US 150	WOODFORD			1		6	
IL 117	441	IL 117 NB House No. 729	WOODFORD			0.5		3	
I-155	441	MM 10-22 ; 29-32 (Median)	TAZEWELL	22		150		900	SS, Median, *
I-74	441	I-74 MM 94 (Underpass) East Peoria**	TAZEWELL	Underpass		2		12	SS, THSL
I-74	441	I-74 MM 95-96***	TAZEWELL			20		120	BS
I-74	441	I-74 MM 96 Exit 96 (Infield)	TAZEWELL	Exit Infield		8		48	Infield Exit
I-74	441	I-74 MM 96-96.5	TAZEWELL			1		6	EDGES, BR
I-74	441	I-74 MM 98-97 EB/WB	TAZEWELL	2		5		30	
I-74	441	I-74 MM 98 Pinecrest	TAZEWELL			10		60	Ramps, FL
I-74	441	I-74 MM 98-99	TAZEWELL	1		1		6	SS
I-74	441	I-74 MM 100 NS N of Ramps	TAZEWELL			40		260	Wet
I-74	441	I-74 MM 99-101	TAZEWELL			120		720	BS
I-74	441	I-74 IL 8 Exit	TAZEWELL			5		30	SS
<b>SUB-TOTAL</b>								<b>2767</b>	

\* No spray MM 22-29 (Median)

\*\* Head down river on ramp to get to Camp st.

\*\*\* Colonies of THSL and TSL /brush in front of Bass Pro and behind shop malls

### Legend

SS = Spot Spraying	NS = No Spray
BR = Brush	Wet = Area is Seasonally Wet
BS = Blanket Spraying	PR = Prairie - Consult with R.E.
SS* = May Require Hand Spray /Back Pack	Edges = Spray mowed edge only & consult with R.E.
TSL = Teasle	Heavy = Heavy Infestation
THSL = Thistle	SRRA = Spoon River Rest Area
CV = Crown Vetch	STP = Steep Hillside
FL = Fence Line	(*) = For Information Only

### Notes:

1. Areas not accessible by spraying will be hand-sprayed with spray gun reaching at least 125 feet.
2. Approximate acres of hand-spraying equals 25 acres.
3. Spray rigs shall be equipped with high-flotation tires to access soft infields.
4. Non-working equipment shall be repaired immediately with no additional time allotted to the contractor for repairs.



ROUTE	TEAM SECTION	LOCATION	COUNTY	APPROX. MILES	APPROX. ACRES		APPROX. OUNCES		NOTES
					ON-RD. *	OFF-RD.	ON-RD. *	OFF-RD.	
I-74	441	I-74	MM 101 (I-155)	TAZEWELL		1		6	Edges
I-74	441	I-74	MM 102 Morton (SS)	TAZEWELL	Exit Infield	10		60	Ramps, THSL
I-74	441	I-74	MM 103-104 (Exit Infield)	TAZEWELL		1		6	SS
I-74	441	I-74	MM 104-106 (Median)	TAZEWELL	Median	1		6	SS
I-74	441	I-74	MM 112 (IL 117)	TAZEWELL	Exit Infield	8		48	Wet, Ramp
I-74	441	I-74	MM 112-117 (Median)	TAZEWELL	Median	1		6	Median
I-74	441	I-74	MM 120 (Ramps/Infield)	TAZEWELL		20		120	STP
I-74	441	I-74	MM 95-120 (EB/WB)	TAZEWELL	25	15		90	
I-74	441	I-74	MM 115-118 (Median)	TAZEWELL	3	6		36	Median
I-74	441	I-74	MM 118-114 WB (S of Lagoon)	TAZEWELL		15		90	
I-74	441	I-74	MM 112-108 WB	TAZEWELL		5		30	SS
I-474	441	I-474	MM 15- MM 2 (Median)	TAZEWELL	6	100		600	SS
I-474	441	I-474	MM 15 (Infields)	TAZEWELL	Infields	8		48	Wet, STP
I-474	441	I-474	MM 13-9 WB	TAZEWELL	4	3		19	
I-474	441	I-474	MM 12 (NR Overpass)	TAZEWELL		4		24	NS, SS
I-474	441	I-474	MM 9.9-14.5	TAZEWELL	5	5		30	
I-474	441	I-474	MM 9.5 NS	TAZEWELL		2		12	Steep
I-474	441	I-474	Exit 9	TAZEWELL		5		30	STP, Wet
I-474	432	I-474	MM 7-8.25	PEORIA	1.25	10		60	
I-474	432	I-474	MM 8.5-6 (Median Shoulders)	PEORIA	2.5	5		30	Med. Shldrs.
I-474	432	I-474	MM 7-6 WB	PEORIA	1	10		60	
I-474	432	I-474	Exit 6**	PEORIA		20		120	Wet, SS, PR
I-474	432	I-474	MM 3.9-4	PEORIA	0.1	1		6	
I-474	432	I-474	Exit 5	PEORIA		24		144	
I-474	432	I-474	Exit 3	PEORIA		20		120	
I-474	432	I-474	MM 1.5-3 EB/WB	PEORIA	4	10		60	
I-474	432	I-474	MM 0-8.25	PEORIA	8.25	5		30	
I-474	432	I-474	I-74 Infields	PEORIA		10		60	Steep
I-474	432	I-474	Median IL River to I-74	PEORIA	7	100		600	SS
IL 91	432	IL 91	1 Mi. N of Orange Prairie Rd.	PEORIA	1	60		360	SS
IL 8	432	IL 8	IL 116 - IL 78	PEORIA	34	100		600	SS, STP
IL 116	432	IL 116	I-474 - Hanna City	PEORIA	12	70		360	SS
SUB-TOTAL								3871	

\*\* Very good prairie NW quadrant. Spray TSL colonies only. No blanket spray

**Legend**

- |   |   |
|---|---|
| SS = Spot Spraying                      | NS = No Spray                                     |
| BR = Brush                              | Wet = Area is Seasonally Wet                      |
| BS = Blanket Spraying                   | PR = Prairie - Consult with R.E.                  |
| SS* = May Require Hand Spray /Back Pack | Edges = Spray mowed edge only & consult with R.E. |
| TSL = Teasle                            | Heavy = Heavy Infestation                         |
| THSL = Thistle                          | SRRA = Spoon River Rest Area                      |
| CV = Crown Vetch                        | STP = Steep Hillside                              |
| FL = Fence Line                         | (*) = For Information Only                        |

**Notes:**

1. Areas not accessible by spraying will be hand-sprayed with spray gun reaching at least 125 feet.
2. Approximate acres of hand-spraying equals 25 acres.
3. Spray rigs shall be equipped with high-flotation tires to access soft infields.
4. Non-working equipment shall be repaired immediately with no additional time allotted to the contractor for repairs.

ROUTE	TEAM SECTION	LOCATION		COUNTY	APPROX. MILES	APPROX. ACRES		APPROX. OUNCES		NOTES
						ON-RD. *	OFF-RD.	ON-RD. *	OFF-RD.	
IL 6	432	IL 6/1-74	I-74	PEORIA			60		360	Steep, SS
IL 6	432	IL 6	MM 0-5 (Median)	PEORIA	5		5		30	SS
IL 6 SB	432	IL 6 SB	MM 2.2 SB	PEORIA			1		6	SS
IL 6 SB	432	IL 6 SB	MM 1.5 SB	PEORIA			1		6	SS
IL 6 SB	432	IL 6 SB	MM 0.9	PEORIA			1		6	SS
IL 6 SB	432	IL 6 SB	MM 2-4 NB/SB	PEORIA			10		60	SS
IL 6 SB	432	IL 6 SB	Exit 5	PEORIA			5		30	Edges
IL 6 SB	432	IL 6 SB	MM 5-6	PEORIA			10		60	SS
IL 6 SB	432	IL 6 SB	Exit 6	PEORIA			5		30	Edges + +
IL 40	432	IL 40 (NB, SB)	IL 6 - US 150	PEORIA			20		120	SS (very spotty) edges
IL 6 SB	432	IL 6 SB	MM 7-8	PEORIA			4		24	Steep, SS*
IL 6 SB	432	IL 6 SB	MM 9	PEORIA			60		360	SS
I-74	421	I-74	Pope Creek	KNOX			40		240	SS
I-74	421	I-74	Henderson Creek	KNOX			60		360	SS
I-74	421	I-74	At US 34	KNOX			40		240	SS
US 34	421	US 34	Seminary Street Exit	KNOX			40		240	SS
US 34	421	US 34	Henderson Street Exit	KNOX			20		120	SS + +
US 34	421	US 34	West Main Street Exit	KNOX			40		240	SS
US 34	421	US 34	MM 0-8	KNOX			80		480	BS
US 34	421	US 34	MM 15	WARREN			1		6	SS
I-74	421	I-74	MM 44-48	KNOX			25		150	SS
I-74	421	I-74	Exit 48	KNOX			20		120	SS
I-74	421	I-74	Exit 54, Median, NE Quadrant	KNOX			60		360	THSL, TSL
I-74	421	I-74	MM 62 (SRRA) EB/WB	KNOX	0.5		10		70	PR, SS + + (SEE DETAIL SHEET)
US 150	432	US 150	Glen St.-Willow Knolls Dr.	PEORIA	6		20		140	SS
US 150	432	US 150	IL 78 - Kickapoo Rd.	PEORIA			60		360	SS
US 24	432	US 24	N/O IL 6 - IL 29	PEORIA	20		5		35	
US 24	432	US 24	2 Mi. N. of IL 9 to Banner, Median	PEORIA	17		100		600	BR, SS
IL 9	432	IL 9	US 24-IL River (near Bridges)	PEORIA	5		20		140	SS; edges
IL 6	432	IL 6	Exit 2 (US 150)	PEORIA			5		35	Edges
IL 6	432	IL 6	MM 2-5 (Median)	PEORIA	3 Median		10		70	Median
IL 6	432	IL 6	MM 2-5 EB/WB	PEORIA	EB/WB		9		63	SS
IL 6	432	IL 6	At IL 29	PEORIA			20		140	BS
IL 29	432	IL 29	Peoria to Chillicothe	PEORIA	NB/SB		10		70	SS
IL 29	432	IL 29	Chillicothe to Henry	PEORIA			100		600	SS
IL 29	432	IL 29	IL 6 to US 150	PEORIA	NB/SB		10		70	SS
<b>SUB-TOTAL</b>									<b>6041</b>	

+ + Engineer must be present during spray

**Legend**

- |   |   |
|---|---|
| SS = Spot Spraying                      | NS = No Spray                                     |
| BR = Brush                              | Wet = Area is Seasonally Wet                      |
| BS = Blanket Spraying                   | PR = Prairie - Consult with R.E.                  |
| SS* = May Require Hand Spray /Back Pack | Edges = Spray mowed edge only & consult with R.E. |
| TSL = Teasle                            | Heavy = Heavy Infestation                         |
| THSL = Thistle                          | SRRA = Spoon River Rest Area                      |
| CV = Crown Vetch                        | STP = Steep Hillside                              |
| FL = Fence Line                         | (*) = For Information Only                        |

**Notes:**

1. Areas not accessible by spraying will be hand-sprayed with spray gun reaching at least 125 feet.
2. Approximate acres of hand-spraying equals 25 acres.
3. Spray rigs shall be equipped with high-flotation tires to access soft infields.
4. Non-working equipment shall be repaired immediately with no additional time allotted to the contractor for repairs.

ROUTE	TEAM SECTION	LOCATION	COUNTY	APPROX. MILES	APPROX. ACRES		APPROX. OUNCES		NOTES
					ON-RD. *	OFF-RD.	ON-RD. *	OFF-RD.	
IL 6	432	IL 6	MM 4 WB (S of RR Bridge)	PEORIA		10		60	Wet Ditch
IL 6	432	IL 6	Exit 5 (Allen Rd.)	PEORIA		25		150	Edges, PR
IL 6	432	IL 6	Exit 6 (Knoxville Ave.)**	PEORIA		8		48	Edges, PR + +
IL 6	432	IL 6	MM 7.5***	PEORIA		5		30	STP HLSD
IL 6	432	IL 6	MM 8, Ramps	PEORIA		60		360	Wet
I-74	432	I-74	Exit 92 /MM 92.5	PEORIA	0.5	5		30	BR, Steep
I-74	432	I-74	MM 92 EB****	PEORIA		1		6	SS
I-74	432	I-74	Exit 91 (University)	PEORIA		40		240	CV, THSL, STP
I-74	432	I-74	MM 90-92	PEORIA		10		60	
I-74	432	I-74	Exit 90 (Gale Ave.)(paved gutters)	PEORIA		10		60	BRSH, SS* (See Detail)
I-74	432	I-74	MM 90-89*****	PEORIA		1		6	SS, HVY
I-74	432	I-74	Exit 89	PEORIA		10		60	Steep
I-74	432	I-74	MM 89-91 EB	PEORIA		10		60	
I-74	432	I-74	Exit 87-88 (Ramps)	PEORIA		20		120	PR, STP
I-74	432	I-74	MM 87-88 (Median)	PEORIA		1		6	SS
I-74	432	I-74	MM 85	PEORIA		No spray under high tension power line + +			PR No Spray + +
I-74	432	I-74	MM 88-84 WB	PEORIA	4	12		72	Edges
I-74	432	I-74	Spray brush on Gilles Rd.&Heinz Ln overpasses	PEORIA		10		60	
I-74	432	I-74	MM 87-86 (Median)	PEORIA		10		60	Wet, Median
I-74	432	I-74	MM 82-80 EB	PEORIA	2	5		30	
I-74	432	I-74	Exit 82	PEORIA		8		48	PR, SS, Edges + +
I-74	432	I-74	MM 76-82 (Median)	PEORIA	8	20		120	SS, Median edges
I-74	432	I-74	MM 75-82	PEORIA	7	10		60	BR, SS, FL
I-74	432	I-74	Exit 75	PEORIA		10		60	SS
I-74	432	I-74	MM 71-75	PEORIA	4	10		60	SS, Edges
I-74	432	I-74	MM 71-68 (Median Shoulder)	PEORIA	10	20		120	SS
I-74	432	I-74	EB MM 74 WB (CA, THSTL)	PEORIA		3		18	Hillside (by sign)
I-74	432	I-74	EB Exit 71 (Ramps/Edges)	PEORIA		8		48	SS Ramps/Edges, PR infields + +
I-74	421	I-74	MM 67-69 (Median)	KNOX/PEORIA	3	8		48	Median
<b>SUB-TOTAL</b>								<b>2100</b>	

+ + Engineer must be present during spray

\*\* No spray prairie in center of infields

\*\*\* Very steep; pull 350 ft. of hose and hand spray

\*\*\*\* No spray above retaining walls shrubs on sound walls. No spray mm 92.5-93 EB & WB

\*\*\*\*\* Large amount of TSL and brush in NE Quadrant. Will require hand spraying

### Legend

SS = Spot Spraying

BR = Brush

BS = Blanket Spraying

SS\* = May Require Hand Spray /Back Pack

TSL = Teasle

THSL = Thistle

CV = Crown Vetch

FL = Fence Line

NS = No Spray

Wet = Area is Seasonally Wet

PR = Prairie - Consult with R.E.

Edges = Spray mowed edge only & consult with R.E.

Heavy = Heavy Infestation

SRRA = Spoon River Rest Area

STP = Steep Hillside

(\*) = For Information Only

### Notes:

1. Areas not accessible by spraying will be hand-sprayed with spray gun reaching at least 125 feet.

2. Approximate acres of hand-spraying equals 25 acres.

3. Spray rigs shall be equipped with high-flotation tires to access soft infields.

4. Non-working equipment shall be repaired immediately with no additional time allotted to the contractor for repairs.

FILE NAME = D468033-sheets.dgn	USER NAME = lababidism	DESIGNED -	REVISED -	<b>STATE OF ILLINOIS DEPARTMENT OF TRANSPORTATION</b>	<b>SCHEDULE OF QUANTITIES</b>				F.A.P. RTE.	SECTION	COUNTY	TOTAL SHEETS	SHEET NO.			
Default	PLOT SCALE = 100.0000' / 1in.	DRAWN -	REVISED -		SCALE:	SHEET	OF	SHEETS	STA.	TO	STA.	VAR.	D4 WEED SPRAYING 2017 (OR)	VARIOUS	14	11
	PLOT DATE = 10/27/2016	CHECKED -	REVISED -		ILLINOIS FED. AID PROJECT											
		DATE -	REVISED -		CONTRACT NO. 68D33											

ROUTE	TEAM SECTION	LOCATION		COUNTY	APPROX. MILES	APPROX. ACRES		APPROX. OUNCES		NOTES
						ON-RD. *	OFF-RD.	ON-RD. *	OFF-RD.	
I-74	421	I-74	MM 62-71	KNOX/PEORIA	9		40		246	BR, FL
I-74	421	I-74	MM 64.5 WB	KNOX			1		6	
I-74	421	I-74	MM 62 WB SRRRA** (See Detail)	KNOX			20			TSL, STP + +
I-74	421	I-74	Rest Area Ramp EB	KNOX			5			THSL
I-74	421	I-74	WB MM 62	KNOX			10		60	
I-74	421	I-74	WB MM 61	KNOX			1		6	
I-74	421	I-74	WB MM 60	KNOX			1		6	
I-74	421	I-74	MM 59.5-56.2	KNOX	3		8		48	
I-74	421	I-74	MM 54.8	KNOX			1		6	
I-74	421	I-74	Exit 54	KNOX			20		120	THS, TSL
I-74	421	I-74	MM 54-50 (Median)	KNOX	4		8		48	SS, Median
I-74	421	I-74	MM 51.9	KNOX			1		6	
I-74	421	I-74	Exit 51	KNOX			40		240	
I-74	421	I-74	Exit 48	KNOX			10		60	Median
I-74	421	I-74	MM 51-45 (Median)	KNOX	1		60		360	
I-74	421	I-74	MM 47-47.5	KNOX	0.5		3		18	
I-74	421	I-74	Exit 46 & Ramps	KNOX			40		240	Exit/Ramps
I-74	421	I-74	MM 46-40 (Median)	KNOX	6		120		720	SS/Medians
I-74	421	I-74	MM 40	KNOX			3		18	SS
I-74	421	I-74	MM 39.2	KNOX			3		18	Hillside
I-74	421	I-74	MM 40-39 (Median)	KNOX	1		20		120	SS/Medians
I-74	421	I-74	MM 38.5-34.9	KNOX	4		10		60	
I-74	421	I-74	MM 36-34.5 (Median)	KNOX	1.5		40		240	SS/Medians
I-74	421	I-74	MM 33.5	KNOX			1		6	Hillside
I-74	421	I-74	Exit 32 *** + +	HENRY			30		180	SS, PR + +
IL 97	411	IL 94	S. of Aledo high school; A distance of 2 miles; NB & SB	MERCER	2		20		120	Heavy Rosettes
I-74	421	I-74	MM 32.5-33.1	KNOX	1.5		5		30	SS
I-74	421	I-74	MM 35-36 EB (Median)	KNOX			10		60	Median
I-74	421	I-74	MM 36.1	KNOX			2		12	SS
<b>SUB-TOTAL</b>									<b>3054</b>	

+ + Prairie; Engineer must be present during spray  
 \*\* No spray NW quadrant of WB SRRRA good prairie  
 \*\*\* Spot spray TSL Rosette patches

**Legend**

SS = Spot Spraying	NS = No Spray
BR = Brush	Wet = Area is Seasonally Wet
BS = Blanket Spraying	PR = Prairie - Consult with R.E.
SS* = May Require Hand Spray /Back Pack	Edges = Spray mowed edge only & consult with R.E.
TSL = Teasle	Heavy = Heavy Infestation
THSL = Thistle	SRRRA = Spoon River Rest Area
CV = Crown Vetch	STP = Steep Hillside
FL = Fence Line	(*) = For Information Only

**Notes:**

1. Areas not accessible by spraying will be hand-sprayed with spray gun reaching at least 125 feet.
2. Approximate acres of hand-spraying equals 25 acres.
3. Spray rigs shall be equipped with high-flotation tires to access soft infields.
4. Non-working equipment shall be repaired immediately with no additional time allotted to the contractor for repairs.



HERBICIDE DOSAGE CHART				
WATER	MILESTONE VM*	DRIFT CONTROL**	NON-IONIC SURFACTANT***	ACRES OF R.O.W.
(GALLONS)	(OZ.)	(OZ.)	(PINTS)	ACRE
40	6	3.2	0.8	1
50	7.5	4	1	1.25
100	15	8	2	2.5
200	30	16	4	5
300	45	24	6	7.5
400	60	32	8	10
500	75	40	10	12.5
600	90	48	12	15
700	105	56	14	17.5
800	120	64	16	20
900	135	72	18	22.5
1000	150	80	20	25
1100	165	88	22	27.5
1200	180	96	24	30
1300	195	104	26	32.5
1400	210	112	28	35
1500	225	120	30	37.5

\* BASED ON 6 OUNCES OF MILESTONE VM FOR EACH 1.0 ACRE  
 \*\* BASED ON 8 OUNCES OF DRIFT CONTROL AGENT PER 100 GALLONS  
 \*\*\* BASED ON 2 PINTS OF NON-IONIC SURFACTANT FOR EACH 100 GALLONS OF WATER

**Notes:**

1. Suggested rate of water per acre. Refer to product label for verification
2. Use 6 oz of milestone per acre
3. Spraying machine shall be calibrated to deliver 6 oz per acre
4. spot checks will be performed to check for herbicide delivery accuracy