

STATE OF ILLINOIS
DEPARTMENT OF TRANSPORTATION
DIVISION OF HIGHWAYS

F.A.P. RTE.	SECTION	COUNTY	TOTAL SHEETS	SHEET NO.
322	(26,27,28)RS-3	MARION	14	1
		ILLINOIS	CONTRACT NO. 76H18	

FOR INDEX OF SHEETS, SEE SHEET NO. 2

RESURFACING OMISSIONS

SN	M.S.	LENGTH	FEATURE CROSSED
061-0005	128.03	100	EAST FORK KASKASKIA
061-0004	128.40	100	EAST FORK KASKASKIA OVF
061-0003	129.84	26	LOUSE RUN

TRAFFIC DATA

LOCATION	US 50 - FERRYDALE RD.	FERRYDALE RD. - BRITT RD.
2015 ADT (CURRENT)	3750 (ACTUAL)	3250 (ACTUAL)
2017 ADT	3800 (ESTIMATED)	3300 (ESTIMATED)
2037 ADT	4300 (ESTIMATED)	3800 (ESTIMATED)
MUZ:	7.3	8.5
SUZ:	7.3	11.5

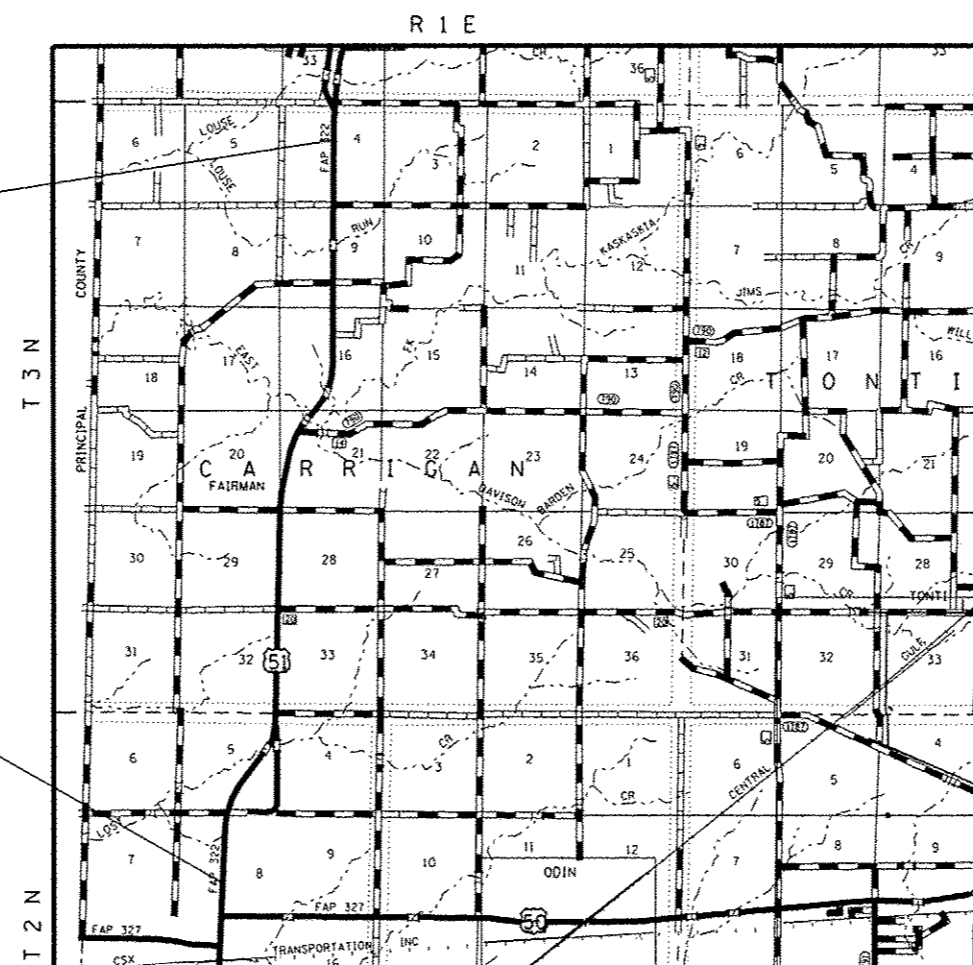
PROPOSED HIGHWAY PLANS

FAP ROUTE 322 (US 51)
SECTION (26,27,28)RS-3
PROJECT ACNHPP-0322(300)
PATCHING, MILLING AND RESURFACING
MARION COUNTY

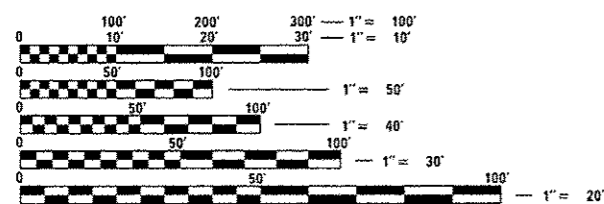
C-98-051-14



END PROJECT
M.S. 131.11
LONG: -89.095714
LAT: 38.734686



BEGIN PROJECT
M.S. 123.05
LONG: -89.114232
LAT: 38.620985



FULL SIZE PLANS HAVE BEEN PREPARED USING STANDARD ENGINEERING SCALES. REDUCED SIZED PLANS WILL NOT CONFORM TO STANDARD SCALES. IN MAKING MEASUREMENTS ON REDUCED PLANS, THE ABOVE SCALES MAY BE USED.

J.U.L.I.E.
JOINT UTILITY LOCATION INFORMATION FOR EXCAVATION
1-800-892-0123
OR 811

PROJECT ENGINEER: TIM PADGETT (618) 346-3325
PROJECT MANAGER: DIANA MURRAY (618) 346-3207

CONTRACT NO. 76H18

GROSS LENGTH = 42,557 FT. = 8.06 MILE
NET LENGTH = 42,333 FT. = 8.02 MILE
TOWNSHIPS: CARRIGAN, TONTI & ODIN
NOT TO SCALE

STATE OF ILLINOIS
DEPARTMENT OF TRANSPORTATION
DIVISION OF HIGHWAYS

SUBMITTED Oct 7 20 16
Jeffrey Z. Kern REGION ENGINEER
Dec 9 20 16
Mawlem M. Addis ENGINEER OF DESIGN AND ENVIRONMENT
Dec 7 20 16
DIRECTOR OF PROGRAM DEVELOPMENT

PRINTED BY THE AUTHORITY
OF THE STATE OF ILLINOIS

INDEX OF SHEETS

- 1 COVER
- 2 INDEX OF SHEETS, GENERAL NOTES, & LIST OF STANDARDS
- 3-5 SUMMARY OF QUANTITIES
- 6 TYPICAL SECTIONS
- 7 PATCHING SCHEDULES
- 8 RESURFACING & TEMPORARY RAMP SCHEDULES
- 9 PAVEMENT MARKING & GUARDRAIL SCHEDULES
- 10 LOCATION MAP
- 11 STEEL RAILING, TYPE 2399 DETAILS
- 12-14 GUARDRAIL DETAILS AT STRUCTURES

LIST OF STANDARDS

- 000001-06 STANDARD SYMBOLS, ABBREVIATIONS AND PATTERNS
- 001006 DECIMAL OF AN INCH AND OF A FOOT
- 442201-03 CLASS C AND D PATCHES
- 630001-11 STEEL PLATE BEAM GUARDRAIL
- 630301-07 SHOULDER WIDENING FOR TYPE 1 (SPECIAL) GUARDRAIL TERMINALS
- 631032-09 TRAFFIC BARRIER TERMINAL, TYPE 6A
- 667101-02 PERMANENT SURVEY MARKERS
- 701006-05 OFF-RO OPERATIONS, 2L, 2W, 15' (4.5M) TO 24" (600MM) FROM PAVEMENT EDGE
- 701011-04 OFF-RO MOVING OPERATIONS, 2L, 2W, DAY ONLY
- 701201-04 LANE CLOSURE, 2L, 2W, DAY ONLY, FOR SPEEDS ≥ 45 MPH
- 701301-04 LANE CLOSURE, 2L, 2W SHORT TERM OPERATIONS
- 701306-03 LANE CLOSURE, 2L, 2W, SLOW MOVING OPERATIONS DAY ONLY, FOR SPEEDS ≥ 45 MPH
- 701311-03 LANE CLOSURE, 2L, 2W, MOVING OPERATIONS - DAY ONLY
- 701336-06 LANE CLOSURE, 2L, 2W WORK AREAS IN SERIES, FOR SPEEDS ≥ 45 MPH
- 701901-06 TRAFFIC CONTROL DEVICES
- 780001-05 TYPICAL PAVEMENT MARKINGS
- 781001-04 TYPICAL APPLICATIONS RAISED REFLECTIVE PAYMENT MARKERS

GENERAL NOTE

1. THE STANDARDS AND REVISION NUMBERS SHALL APPLY TO THIS PROJECT.
2. ILLINOIS STATE LAW REQUIRES A 48 HOUR NOTICE TO BE GIVEN TO ALL UTILITIES BEFORE DIGGING. FIELD MARKING OF FACILITIES MAY BE OBTAINED BY CONTACTING J.U.L.I.E. OR FOR NON MEMBERS, THE UTILITY COMPANY DIRECTLY. AGENCIES KNOWN TO HAVE FACILITIES WITHIN THE PROJECT AREA ARE AS FOLLOWS:

UTILITY	ABOVE GROUND	BELOW GROUND
•AMEREN ILLINOIS (GAS & ELECTRIC)	X	X
•FRONTIER NORTH, INC.	X	X
•FAIRPOINT COMMUNICATIONS	X	X
•CITY OF CENTRALIA (WATER & SANITARY SEWER)		X
•EXXON MOBIL PIPELINE COMPANY		X
•GATEWAY REGIONAL WATER COMPANY		X
•ENABLE - MISSISSIPPI RIVER TRANSMISSION LLC		X
• FMC WATER COMPANY		X
•KINDER MORGAN (PIPELINE)		X
•VERIZON BUSINESS	X	X
•MCLEOD TELECOMMUNICATIONS SERVICES, LLC	X	X
•CITY OF SALEM (WATER & SANITARY SEWER)		X
•CITY OF SALEM (GAS)		X
•VILLAGE OF SANDOVAL		X
•TRI-COUNTY ELECTRIC COOPERATIVE, INC.	X	X

MEMBERS OF J.U.L.I.E. (800-892-0123) ARE INDICATED BY AN *. NON-JULIE MEMBERS MUST BE NOTIFIED INDIVIDUALLY.

3. THE THICKNESS OF THE HMA MIXTURE SHOWN ON THE PLANS IS THE NOMINAL THICKNESS. DEVIATIONS FROM THE NOMINAL THICKNESS WILL BE PERMITTED WHEN SUCH DEVIATIONS OCCUR DUE TO IRREGULARITIES IN THE EXISTING SURFACE OR BASE ON WHICH THE HMA MIXTURE IS PLACED.
4. AN ESTIMATED 17785 TONS OF HMA WILL BE REMOVED.
5. ALL AREAS DISTURBED FOR ANY REASON SHALL BE PERMANENTLY SEEDED AS DIRECTED BY THE ENGINEER. ALL AREAS DISTURBED BY THE CONTRACTOR OUTSIDE THE PROPOSED CONSTRUCTION LIMITS SHALL BE SEEDED AT THE CONTRACTOR'S EXPENSE.
6. THE CONTRACTOR SHALL VERIFY ALL DIMENSIONS AND CONDITIONS IN THE FIELD PRIOR TO CONSTRUCTION AND ORDERING OF MATERIALS.

7. "ROAD CONSTRUCTION AHEAD" SIGNS SHALL BE PLACED AT THE BEGINNING OF THE PROJECT PLUS ALL INTERSECTING SIDE ROADS AND WILL BE INCLUDED IN THE TRAFFIC CONTROL PAY ITEMS. ALL CONSTRUCTION SIGNS SHALL BE 48" FLUORESCENT ORANGE.
8. THE PORTABLE CHANGEABLE MESSAGE SIGNS SHALL BE PLACED AS DIRECTED BY THE ENGINEER. NO ADDITIONAL COMPENSATION SHALL BE ALLOWED FOR RELOCATION OF THESE SIGNS.
9. THE QUALITY CONTROL FOR PERFORMANCE ITEMS AND QUANTITIES ARE AS FOLLOWS:
HMA POLY SURFACE COURSE - 14228 TONS
10. EXCAVATED DIRT FROM HMA SHOULDER SHALL BE PLACED BEHIND CURB AND SEEDED ACCORDING TO ARTICLE 250.04. SEEDING SHALL BE INCLUDED IN THE COST OF EARTH EXCAVATION.
11. THE INTENT OF GUARDRAIL INSTALLATION IN THIS CONTRACT IS TO LOCATE THE FACE OF THE GUARDRAIL AT THE EDGE OF THE AGGREGATE SHOULDER WHILE PROVIDING A MINIMUM OF 2' FLAT AREA BEHIND THE GUARDRAIL POST.
12. ALL EARTHWORK REQUIRED TO MEET STANDARD 63031-06 SHALL BE INCLUDED IN THE COST OF TRAFFIC BARRIER TERMINAL, TYPE 1 (SPECIAL), TANGENT.
13. SHORT TERM PAVEMENT MARKING SHALL BE APPLIED TO MILLED, PRIMED, AND FINAL SURFACE. ONLY REMOVAL FROM FINAL SURFACE SHALL BE PAID FOR AS WORK ZONE PAVEMENT MARKING REMOVAL.
14. THE PROPOSED PAVEMENT MARKING SHALL MATCH THE LOCATIONS OF THE EXISTING PAVEMENT MARKING, AS DIRECTED BY THE ENGINEER.
15. FLAGGERS SHALL BE REQUIRED AT ALL TIMES DURING PATCHING OPERATIONS.
16. NO OVERNIGHT LANE CLOSURES WILL BE PERMITTED.
17. TWO CHANGEABLE MESSAGE SIGNS ARE INCLUDED TO BE PLACED AT BOTH ENDS OF THE PROJECT AS DIRECTED BY THE ENGINEER.

COMMITMENTS

NONE

SURVEY MONUMENT LOCATIONS

MONUMENT #1	127.06
-------------	--------

MIXTURE REQUIREMENTS

ROUTE	FAP 322 (US 51)
SECTION	(26,27,28)RS-3
COUNTY	MARION
CONTRACT	76H18

DESCRIPTION:	3P - MILLING AND RESURFACING ON US-51 FROM 0.1 MILES NORTH OF US-50 TO 0.1 MILES SOUTH OF BRITT ROAD.
--------------	---

MIXTURE USE	SURFACE	PATCHING	SHOULDERS ≥ 2.25"
AC/PG	PG 64-22	PG 64-22	PG 64-22
RAP % (MAX)	SEE SPEC.	SEE SPEC.	SEE SPEC.
DESIGN AIR VOIDS	4.0% @ Ndes=70	4.0% @ Ndes=70	**2.0% @ Ndes=30
MIX COMPOSITION (GRADATION MIXTURE)	IL 9.5	IL 19.0 FG	NMAS 3/4"
FRICTION AGG	MIXTURE "C"	MIXTURE "B"	
QUALITY MGMT PROGRAM	QCP	QC/OA	QC/OA

** TOP LIFT SHOULDERS - DESIGN THIS MIX AT 2.0% VOIDS AND ADD ASPHALT TO REDUCE VOIDS 1.5%

PLAN QUANTITIES FOR HMA ITEMS ARE CALCULATED USING A UNIT WEIGHT OF 112 LB/SO YD/IN (59.8 KC/SO M/25 MM THICKNESS).

CODE NO.	ITEM	UNIT	TOTAL QUANTITY	CONSTRUCTION CODE			
				ROADWAY		BRIDGE	
				0005		0014	
				S.N. 061-0003	S.N. 061-0004	S.N. 061-0005	
20200100	EARTH EXCAVATION	CU YD	14	14			
28100805	STONE DUMPED RIPRAP, CLASS A3	TON	8	8			
40600290	BITUMINOUS MATERIALS (TACK COAT)	POUND	63519	63519			
40600990	TEMPORARY RAMP	SQ YD	797	797			
40603315	HOT-MIX ASPHALT SURFACE COURSE, MIX "C", N70	TON	14228	14228			
44000158	HOT-MIX ASPHALT SURFACE REMOVAL, 2 1/4"	SQ YD	141151	141151			
44201827	CLASS D PATCHES, TYPE II, 15 INCH	SQ YD	531	531			
44201831	CLASS D PATCHES, TYPE III, 15 INCH	SQ YD	200	200			
44201833	CLASS D PATCHES, TYPE IV, 15 INCH	SQ YD	420	420			
48102100	AGGREGATE WEDGE SHOULDER, TYPE B	TON	1891	1891			
48203029	HOT-MIX ASPHALT SHOULDERS, 8"	SQ YD	45	45			
48203100	HOT-MIX ASPHALT SHOULDERS	TON	3557	3557			
50102400	CONCRETE REMOVAL	CU YD	2		2		
50104000	BRIDGE RAIL REMOVAL	FOOT	490			200	290

80% FED
20% STATE

14

CODE NO.	ITEM	UNIT	TOTAL QUANTITY	CONSTRUCTION CODE			
				ROADWAY		BRIDGE	
				0005		0014	
				RURAL	S.N. 061-0003	S.N. 061-0004	S.N. 061-0005
50900200	STEEL RAILING, TYPE 2399	FOOT	542		52	200	290
60600605	CONCRETE CURB, TYPE B	FOOT	187	187			
* 63000001	STEEL PLATE BEAM GUARDRAIL, TYPE A, 6 FOOT POSTS	FOOT	950	950			
* 63100087	TRAFFIC BARRIER TERMINAL, TYPE 6A	EACH	12	12			
* 63100167	TRAFFIC BARRIER TERMINAL, TYPE 1 (SPECIAL) TANGENT	EACH	12	12			
63200310	GUARDRAIL REMOVAL	FOOT	1650	1650			
64200108	SHOULDER RUMBLE STRIPS, 8 INCH	FOOT	84691	84691			
67000400	ENGINEER'S FIELD OFFICE, TYPE A	CAL MO	10	10			
67100100	MOBILIZATION	L SUM	1	1			
70100450	TRAFFIC CONTROL AND PROTECTION, STANDARD 701201	L SUM	1	1			
70100460	TRAFFIC CONTROL AND PROTECTION, STANDARD 701306	L SUM	1	1			
70100600	TRAFFIC CONTROL AND PROTECTION, STANDARD 701336	L SUM	1	1			
70106800	CHANGEABLE MESSAGE SIGN	CAL MO	10	10			
70300100	SHORT TERM PAVEMENT MARKING	FOOT	11549	11549			

80% FED
20% STATE

14

* SPECIALTY ITEM

FILE NAME : p:\11\08\4010\INT\EG-11\0111.gpr\PI00110	USER NAME : murrayda	DESIGNED -	REVISED -	STATE OF ILLINOIS DEPARTMENT OF TRANSPORTATION	SUMMARY OF QUANTITIES				F.A. RTE. : 322	SECTION : (26,27,28)RS-3	COUNTY : MARION	TOTAL SHEETS : 14	SHEET NO. : 4
	PLOT SCALE : 100.0000 / in.	CHECKED -	REVISED -		SCALE: _____	SHEET OF _____	SHEETS STA. _____	TO STA. _____	ILLINOIS FED. AID PROJECT				
	PLOT DATE : 10/7/2010	DATE -	REVISED -		76H18								

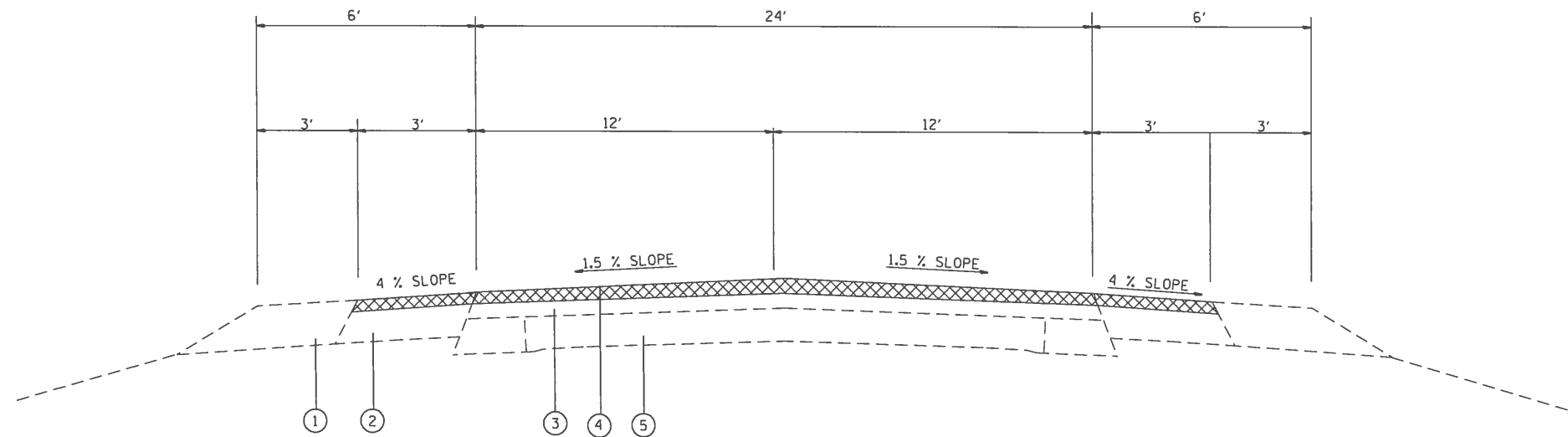
00000000

80% FED
20% STATE


CONSTRUCTION CODE

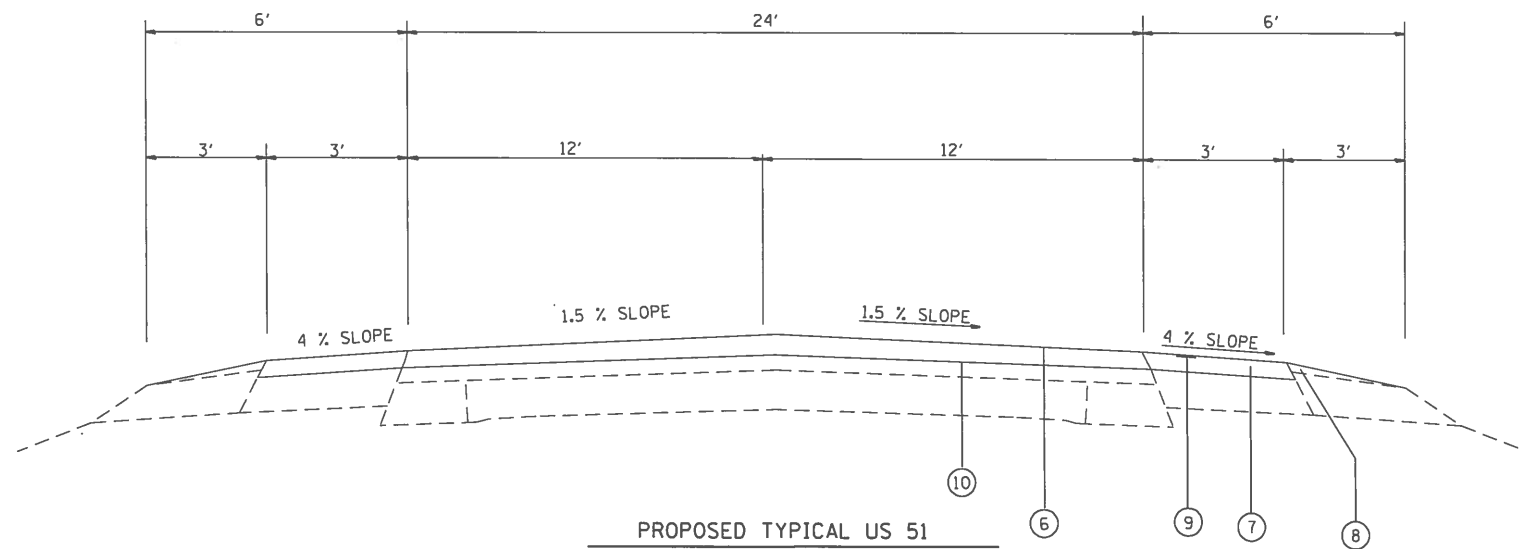
CODE NO.	ITEM	UNIT	TOTAL QUANTITY	CONSTRUCTION CODE		
				ROADWAY 0005 RURAL	BRIDGE 0014 S.N. 061-0003	S.N. 061-0004 S.N. 061-0005
70300150	SHORT TERM PAVEMENT MARKING REMOVAL	SQ FT	1283	1283		
70300220	TEMPORARY PAVEMENT MARKING - LINE 4"	FOOT	96598	96598		
* 72501000	TERMINAL MARKER - DIRECT APPLIED	EACH	12	12		
* 78004210	PREFORMED PLASTIC PAVEMENT MARKING, TYPE B - INLAID - LINE 4	FOOT	96598	96598		
* 78100100	RAISED REFLECTIVE PAVEMENT MARKER	EACH	529	529		
* 78200005	GUARDRAIL REFLECTORS, TYPE A	EACH	38	38		
78300200	RAISED REFLECTIVE PAVEMENT MARKER REMOVAL	EACH	529	529		
X0327980	PAVEMENT MARKING REMOVAL - WATER BLASTING	SQ FT	32200	32200		
Z0070100	SURVEY MONUMENT COVER ASSEMBLY	EACH	1	1		
φ Z0076604	TRAINEES TRAINING PROGRAM GRADUATE	Hour	1500	1500		
φ Z0076600	TRAINEES	Hour	1500	1500		

* SPECIALTY ITEM
φ 0042



EXISTING TYPICAL US 51
MILE STATION 123.05 TO MILE STATION 131.11

- LEGEND**
- ① EXISTING AGGREGATE SHOULDER TYPE B, 6"
 - ② EXISTING BITUMINOUS SHOULDER, 6"
 - ③ EXISTING LEVELING BINDER, 3/4"
 - ④ EXISTING RESURFACING, 5 1/4"
 - ⑤ EXISTING PAVEMENT
 - ⑥ PROPOSED HMA SURFACE COURSE MIX "C" N70, 2 1/4"
 - ⑦ PROPOSED HMA SHOULDER, 2 1/4"
 - ⑧ PROPOSED AGGREGATE WEDGE SHOULDER, TYPE B
 - ⑨ PROPOSED 8" RUMBLE STRIP
 - ⑩ PROPOSED BITUMINOUS MATERIALS (TACK COAT)
-  HMA SURFACE REMOVAL 2 1/4"



PROPOSED TYPICAL US 51
MILE STATION 123.05 TO MILE STATION 131.11

FILE NAME =	USER NAME = murrayda	DESIGNED -	REVISED -	STATE OF ILLINOIS DEPARTMENT OF TRANSPORTATION	TYPICAL SECTIONS				F.A.P. RTE.	SECTION	COUNTY	TOTAL SHEETS	SHEET NO.
pw:\IL\084EBID\INTEG.illinois.gov\PI\DOT\Documents\IDOT Offices\District 8\Projects\0876\Drawings\60\Sheets\0876h18-sht-plan.dwg	PLLOT SCALE = 100.0000' / in.	CHECKED -	REVISED -		322	(26,27,28) RS-3	MARION	14	6				
PLLOT DATE = 10/7/2016	DATE -	REVISED -	REVISED -		CONTRACT NO. 76H18				FED. ROAD DIST. NO. - ILLINOIS FED. AID PROJECT				

FULL DEPTH PATCHING SCHEDULE						
DIR	STATION	DIMENSIONS		CLASS D PATCHES, 15"		
		LTH	WTH	TY-II	TY-III	TY-IV
		FT	FT	SQ YDS	SQ YDS	SQ YDS
NB	123.01	12	12		16	
NB	124.70	6	12	8		
NB	124.96	4	12	5		
NB	125.30	4	12	5		
NB	125.46	12	12		16	
NB	125.51	4	12	5		
NB	125.60	4	12	5		
NB	125.78	4	12	5		
NB	126.24	4	12	5		
NB	126.51	12	12		16	
NB	126.69	12	12		16	
NB	126.91	4	12	5		
NB	126.93	4	12	5		
NB	127.04	4	12	5		
NB	127.53	4	12	5		
NB	127.53	4	12	5		
NB	127.56	4	12	5		
NB	127.84	12	12		16	
NB	128.00	4	12	5		
NB	128.02	4	12	5		
NB	128.04	4	12	5		
NB	128.04	40	12			53
NB	128.06	4	12	5		
NB	128.07	4	12	5		
NB	128.09	4	12	5		
NB	128.27	20	12			27
NB	128.38	4	12	5		
NB	128.39	6	12	8		
NB	128.58	20	12			27
NB	128.60	8	12	11		
NB	128.61	4	12	5		
NB	128.63	4	12	5		
NB	128.63	4	12	5		
NB	128.67	4	12	5		
NB	128.67	4	12	5		
NB	128.68	4	12	5		
NB	128.69	20	12			27
NB	128.86	4	12	5		
NB	128.91	4	12	5		
NB	128.99	4	12	5		
NB	129.01	6	12	8		
NB	129.10	4	12	5		
NB	129.14	4	12	5		
NB	129.69	4	12	5		
NB	129.70	4	12	5		
NB	129.70	12	12		16	
NB	129.74	6	12	8		
NB	129.78	4	12	5		
NB	130.19	4	12	5		
NB	130.26	12	12		16	
SUBTOTAL NB				213	112	134

FULL DEPTH PATCHING SCHEDULE							
DIR	STATION	DIMENSIONS		CLASS D PATCHES, 15"			
		LTH	WTH	TY-II	TY-III	TY-IV	
		FT	FT	SQ YDS	SQ YDS	SQ YDS	
SB	123.38	4	12	5			
SB	123.69	4	12	5			
SB	123.70	4	12	5			
SB	124.70	6	12	8			
SB	124.73	4	12	5			
SB	124.81	12	12		16		
SB	124.84	4	12	5			
SB	125.00	4	12	5			
SB	125.01	4	12	5			
SB	125.12	4	12	5			
SB	125.40	4	12	5			
SB	125.41	8	12	11			
SB	125.51	8	12	11			
SB	125.65	4	12	5			
SB	126.24	4	12	5			
SB	126.31	12	12		16		
SB	126.45	8	12	11			
SB	126.51	20	12			27	
SB	126.53	4	12	5			
SB	126.58	4	12	5			
SB	126.60	4	12	5			
SB	126.69	4	12	5			
SB	126.79	6	12	8			
SB	127.04	4	12	5			
SB	127.14	8	12	11			
SB	127.17	40	4		18		
SB	127.20	4	12	5			
SB	127.22	40	12			53	
SB	127.36	20	12			27	
SB	127.45	4	12	5			
SB	128.00	4	12	5			
SB	128.02	4	12	5			
SB	128.04	4	12	5			
SB	128.04	40	12			53	
SB	128.06	4	12	5			
SB	128.07	4	12	5			
SB	128.07	4	12	5			
SB	128.08	4	12	5			
SB	128.09	4	12	5			
SB	128.21	4	12	5			
SB	128.27	20	12			27	
SB	128.38	4	12	5			
SB	128.39	6	12	8			
SB	128.41	4	12	5			
SB	128.58	4	12	5			
SB	128.61	4	12	5			
SB	128.63	4	12	5			
SB	128.67	4	12	5			
SB	128.68	4	12	5			
SB	128.69	20	12			27	
SUBTOTAL SB1					238	50	214

FULL DEPTH PATCHING SCHEDULE						
DIR	STATION	DIMENSIONS		CLASS D PATCHES, 15"		
		LTH	WTH	TY-II	TY-III	TY-IV
		FT	FT	SQ YDS	SQ YDS	SQ YDS
SB	128.71	20	12			27
SB	128.86	4	12	5		
SB	128.91	4	12	5		
SB	129.06	12	12		16	
SB	129.74	6	12	8		
SB	129.78	4	12	5		
SUBTOTAL SB2				23	16	27
SUBTOTAL (SB1+SB2)				261	66	241
SUBTOTAL (NB+SB1+SB2)				474	178	375
12% SUBTOTAL (NB+SB1+SB2)*				57	22	45
TOTAL				531	200	420

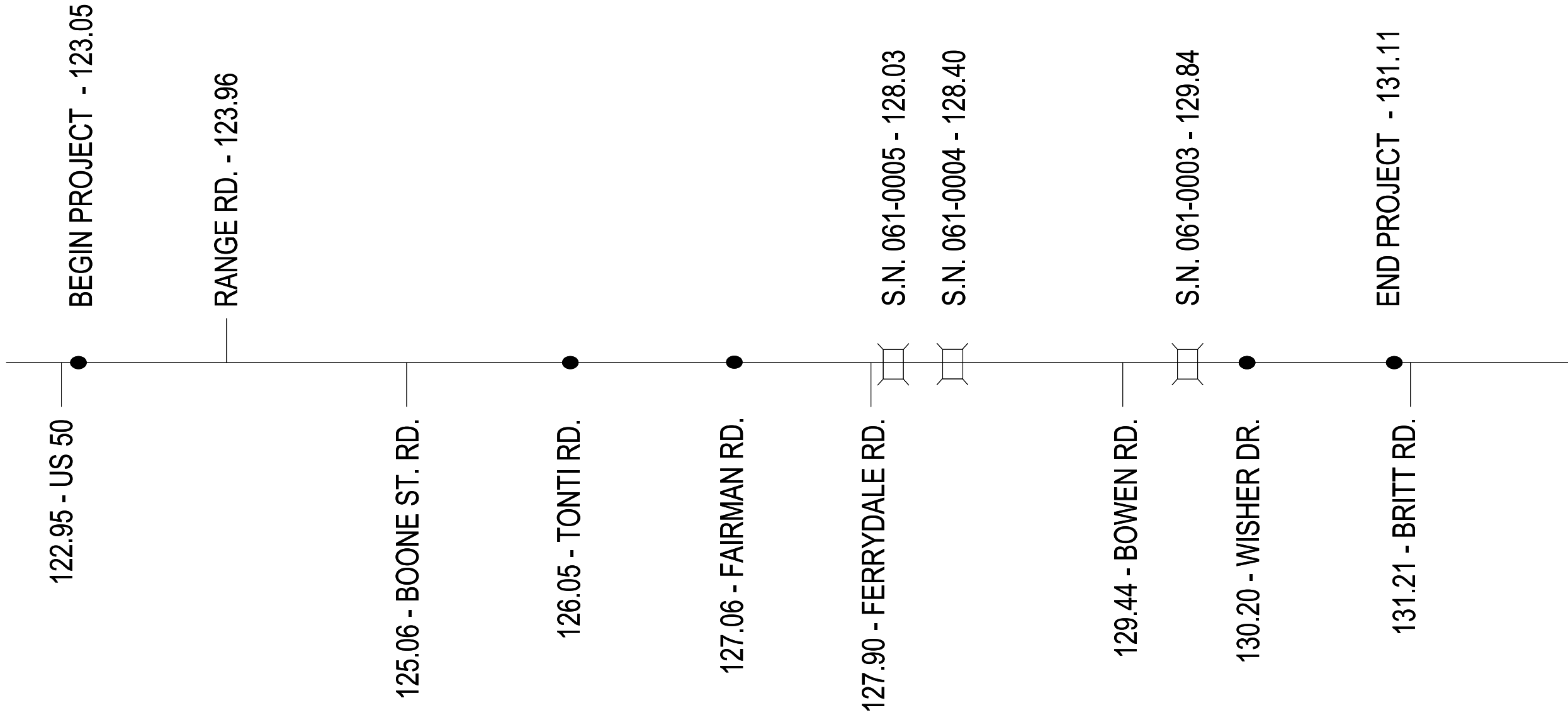
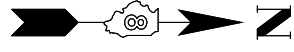
*NOTE: AN ADDITIONAL 12% HAS BEEN ADDED TO THE FINAL PATCHING QUANTITY TO ALLOW FOR WINTER DAMAGE.

RESURFACING SCHEDULE									
STATION TO STATION			LENGTH	HMA SURFACE REMOVAL 2.25"	BITUMINOUS MATERIALS TACK COAT	HMA SURFACE COURSE MIX "C" N70	HMA SHOULDER	AGGREGATE WEDGE SHOULDER, TYPE B	SHOULDER RUMBLE STRIP 8"
			MILES	SQ YDS	POUND	TON	TON	TON	FOOT
MAINLINE									
123.050	-	128.021	4.97	69992	31496	8819			
128.039	-	128.391	0.35	4956	2230	624			
128.409	-	129.838	1.43	20120	9054	2535			
129.842	-	131.110	1.27	17853	8034	2250			
SHOULDERS									
123.050	-	128.021	4.97	17498	7874		2205	1148	52494
128.039	-	128.391	0.35	1239	558		156	81	3717
128.409	-	129.838	1.43	5030	2264		634	330	15090
129.842	-	131.110	1.27	4463	2009		562	293	13390
TOTAL:				141151	63519	14228	3557	1852	84691

TEMPORARY RAMP SCHEDULE				
LOCATION	STATION	LTH	WTH	AREA
		FT	FT	SQ YD
BEGIN PROJECT	123.05			
NB		8	12	11
SB		8	12	11
RANGE RD	123.96			
EB		8	88	78
WB		8	81	72
BOONE ST. RD	125.06			
EB		8	52	46
TONTI RD	126.05			
EB		8	56	50
WB		8	48	43
FAIRMAN RD	127.06			
EB		8	53	47
WB		8	60	53
FERRYDALE RD	127.90			
EB		8	70	62
SN 061-0005	128.03			
NB		8	12	11
NB		8	12	11
SB		8	12	11
SB		8	12	11
SN 061-0004	128.4			
NB		8	12	11
NB		8	12	11
SB		8	12	11
SB		8	12	11
BOWEN RD	129.44			
EB		8	71	63
SN 061-0003	129.84			
NB		8	12	11
NB		8	12	11
SB		8	12	11
SB		8	12	11
WISHER DR	130.20			
EB		8	56	50
WB		8	70	62
END PROJECT	131.11			
NB		8	12	11
SB		8	12	11
TOTAL				797

PAVEMENT MARKING SCHEDULE																	
STATION TO STATION			LTH	SHORT TERM PAVEMENT MARKING	TEMPORARY PAVEMENT MARKING				RAISED REFLECTIVE PAVEMENT MARKER REMOVAL	RAISED REFLECTIVE PAVEMENT MARKERS CRYSTAL	PERFORMED PLASTIC PAVEMENT MARKING TY. B, INLAID				SHORT TERM PAVEMENT MARKING REMOVAL	PAVEMENT MARKING REMOVAL WATER BLASTING	
				4" SKIP-DASH YELLOW	4" SOLID WHITE	4" SKIP-DASH YELLOW	4" SOLID YELLOW				4" SOLID WHITE	4" SKIP-DASH YELLOW	4" SOLID YELLOW				
			FT	FOOT	FOOT	FOOT	DIR	FOOT	EACH	EACH	FOOT	FOOT	DIR	FOOT	SQ FT	SQ FT	
123.050	-	128.021	4.97	7158	52494	6562			328	328	52494	6562			795	19685	
128.039	-	128.391	0.35	507	3717	465			23	23	3717	465			56	1394	
128.409	-	129.838	1.43	2058	15090	1886			94	94	15090	1886			229	5659	
129.842	-	131.110	1.27	1826	13390	1674			84	84	13390	1674			203	5021	
NO PASSING ZONE																	
123.050	-	123.110	0.06					SB	320				SB	320		107	
129.310	-	129.410	0.10					NB	500				NB	500		167	
129.500	-	129.600	0.10					SB	500				SB	500		167	
SUBTOTAL				11549	84691	10587			1320	529	529	84691	529		1320	1283	32200
TOTAL						96598				529	529		96598			1283	32200

GUARDRAIL SCHEDULE																
LOCATION	STRUCTURE NUMBER	RT/LT	STEEL PLATE BEAM GUARDRAIL, TYPE A, 6 FOOT POSTS	TRAFFIC BARRIER TERMINAL, TYPE 1, (SPECIAL) TANGENT	TRAFFIC BARRIER TERMINAL, TYPE 6A	STEEL RAILING, TYPE 2399	GUARDRAIL REFLECTORS, TYPE A	TERMINAL MARKERS DIRECT APPLIED	HMA SHOULDERS, 8"	AGGREGATE WEDGE SHOULDER, TYPE B	CONCRETE CURB, TYPE B	EARTH EXCAVATION	GUARDRAIL REMOVAL	BRIDGE RAIL REMOVAL	CONCRETE REMOVAL	STONE DUMPED RIPRAP, CLASS A3
STA			FOOT	EACH	EACH	FOOT	EACH	EACH	SQ YD	TON	FOOT	CU YD	FOOT	FOOT	CU YD	TON
128.02	061-0005	RT	125.0	1	1		3	1			15.6	0.3	212.5			2
128.02		LT	62.5	1	1		2	1			15.6	0.3	100			
128.03		RT				145	2							145		
128.03		LT				145	2							145		
128.04	061-0004	RT	62.5	1	1		2	1			15.6	0.3	100			
128.04		LT	125.0	1	1		3	1			15.6	0.3	212.5			
128.39		RT	137.5	1	1		3	1			15.6	0.3	225			
128.39		LT	62.5	1	1		2	1			15.6	0.3	112.5			2
128.40	061-0004	RT				100	2							100		
128.40		LT				100	2							100		
128.41	061-0003	RT	62.5	1	1		2	1			15.6	0.3	112.5			
128.41		LT	137.5	1	1		3	1			15.6	0.3	225			
129.83		RT	62.5	1	1		2	1	11.3	11.2	15.6	2.8	100			1
129.83		LT	25.0	1	1		2	1	11.3	8.2	15.6	2.8	75			1
129.84	061-0003	RT				26	1								1	
129.84		LT				26	1								1	
129.85	061-0003	RT	25.0	1	1		2	1	11.3	8.2	15.6	2.8	75			1
129.85		LT	62.5	1	1		2	1	11.3	11.2	15.6	2.8	100			1
TOTAL			950	12	12	542	38	12	45	39	187	14	1650	490	2	8



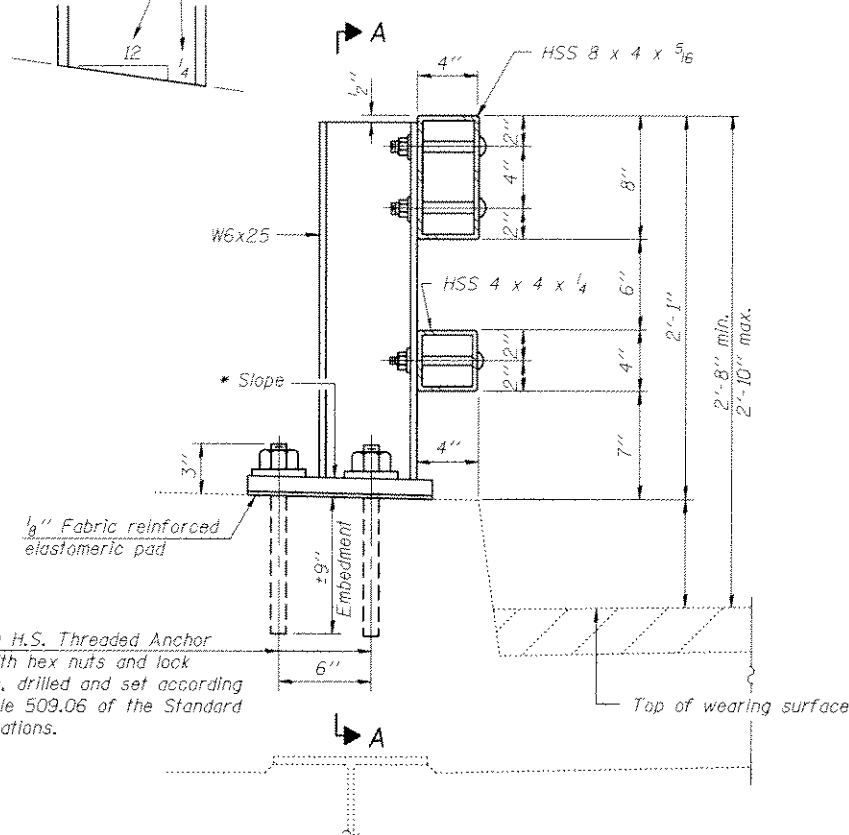
FILE NAME = e:\p\work\p\dot\murrayd\0382778\d876h18-sht-plan.dgn	USER NAME = DEFAULT	DESIGNED -	REVISED -
		DRAWN -	REVISED -
	PLOT SCALE = 100.0000' / in.	CHECKED -	REVISED -
	PLOT DATE = 5/16/2014	DATE -	REVISED -

**STATE OF ILLINOIS
DEPARTMENT OF TRANSPORTATION**

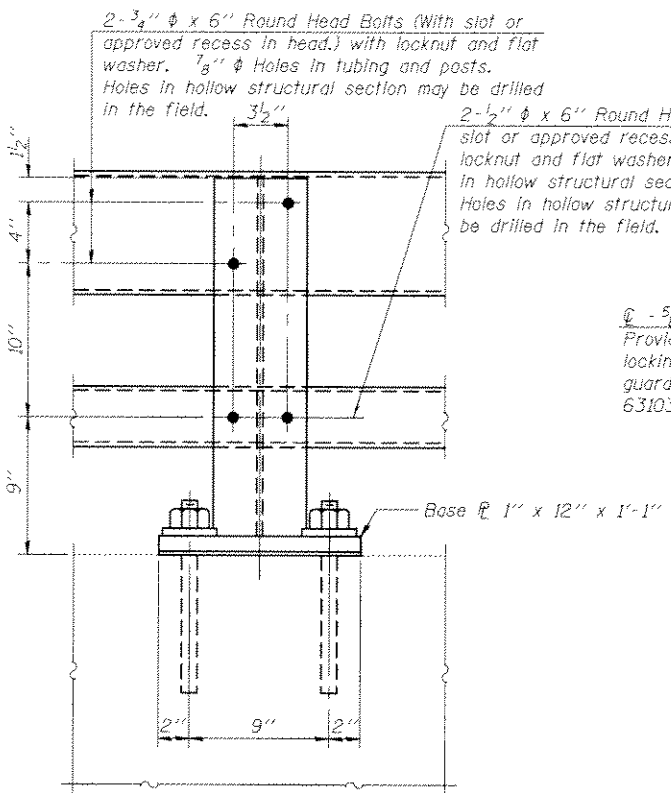
LOCATION MAP			
SCALE:	SHEET NO.	OF SHEETS	STA. TO STA.

F.A. RTE.	SECTION	COUNTY	TOTAL SHEETS	SHEET NO.
322	(26,27,28)RS-3	MARION	14	10
FED. ROAD DIST. NO. ILLINOIS FED. AID PROJECT			76H18	

* Cuf bottom end of post to curb slope.



SECTION AT RAIL POST

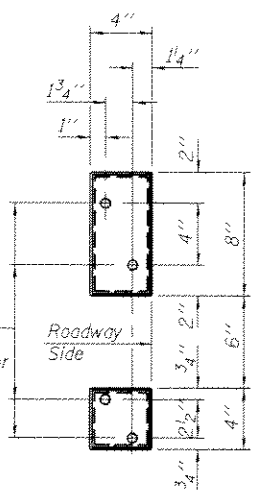


SECTION A-A

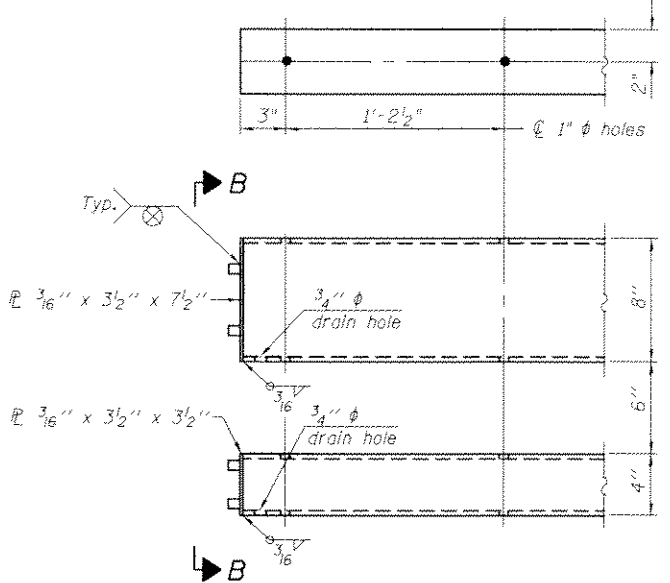
2- 3/4" ϕ x 6" Round Head Bolts (With slot or approved recess in head.) with locknut and flat washer. 7/8" ϕ Holes in tubing and posts. Holes in hollow structural section may be drilled in the field.

2- 1/2" ϕ x 6" Round Head Bolts (With slot or approved recess in head.) with locknut and flat washer. 5/8" ϕ Holes in hollow structural section and post. Holes in hollow structural section may be drilled in the field.

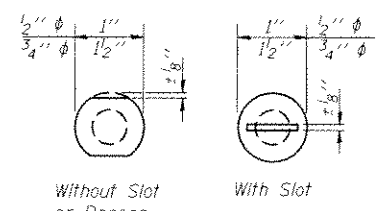
4- 5/8" reduced base welded studs. Provide 4- 5/8" washers and self-locking nuts or nuts and jam nuts for guardrail connection shown on Std. 631032.



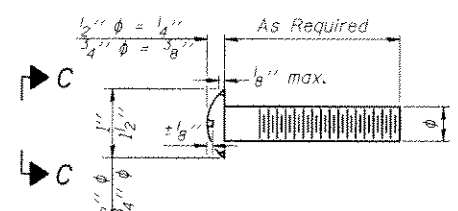
VIEW B-B



END OF RAIL DETAILS

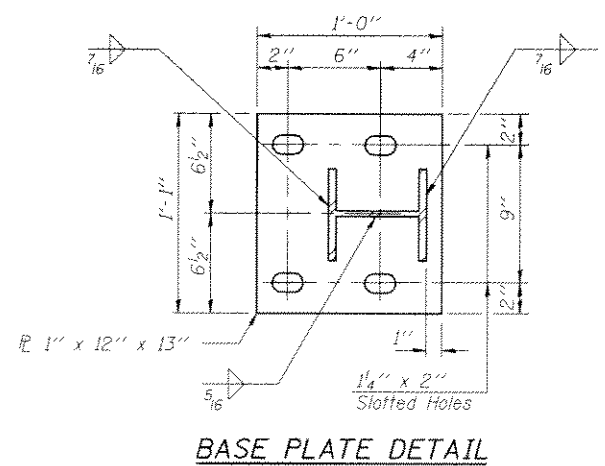


VIEW C-C

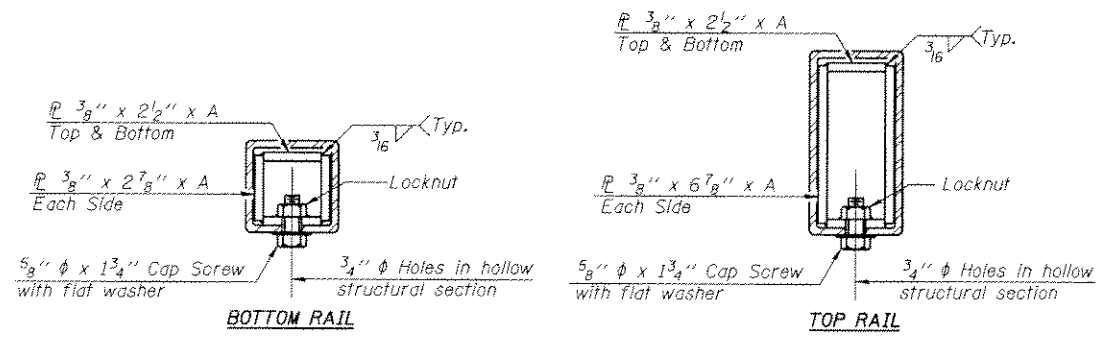


DETAIL OF 1/2" ϕ & 3/4" ϕ ROUND HEAD BOLTS

4- 1" ϕ H.S. Threaded Anchor Rods with hex nuts and lock washers, drilled and set according to Article 509.06 of the Standard Specifications.

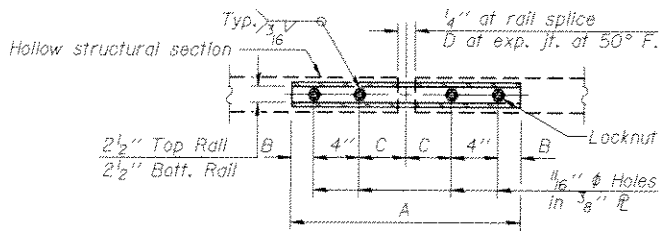


BASE PLATE DETAIL

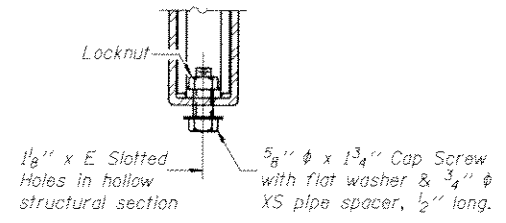


SECTIONS AT RAIL SPLICE

Notes:
 All field drilled holes shall be coated with an approved zinc rich paint before erection.
 Posts shall not be located closer than 1'-3" to an existing bridge expansion joint or end of bridge.
 Steel Bridge Rail expansion joint shall be provided between any two (2) posts which span a bridge expansion joint. Bolts located at expansion joint shall be provided with locknuts and shall be tightened only to a point that will allow ralling movement.
 Provide one 1/8" and two 1/16" steel shims for 25% of the posts. Shims shall be similar to base plates in size and holes.
 All steel rail elements shall be galvanized according to Article 509.05 of the Standard Specifications.



PLAN-BOTT. SPLICE TYPICAL



RAIL SPLICE CONNECTION AT EXPANSION JT.

SPLICE DIMENSIONS

T	D	A	B	C	E
≤ 4"	2 1/2"	1'-8"	2"	4"	2 1/2"
> 4" ≤ 6 1/2"	3 3/4"	2'-0"	2 1/2"	5 1/2"	3 1/2"
> 6 1/2" ≤ 9"	5"	2'-4"	3 1/2"	6 1/2"	9"
> 9" ≤ 13"	7"	2'-10"	4 1/2"	8 1/2"	11"
Rail Splice	1/4"	1'-8"	2"	4"	---

T = Total movement at expansion joint as shown on the design plans.

BILL OF MATERIAL

Item	Unit	Quantity
Steel Railing, Type 2399	Foot	542

R-31

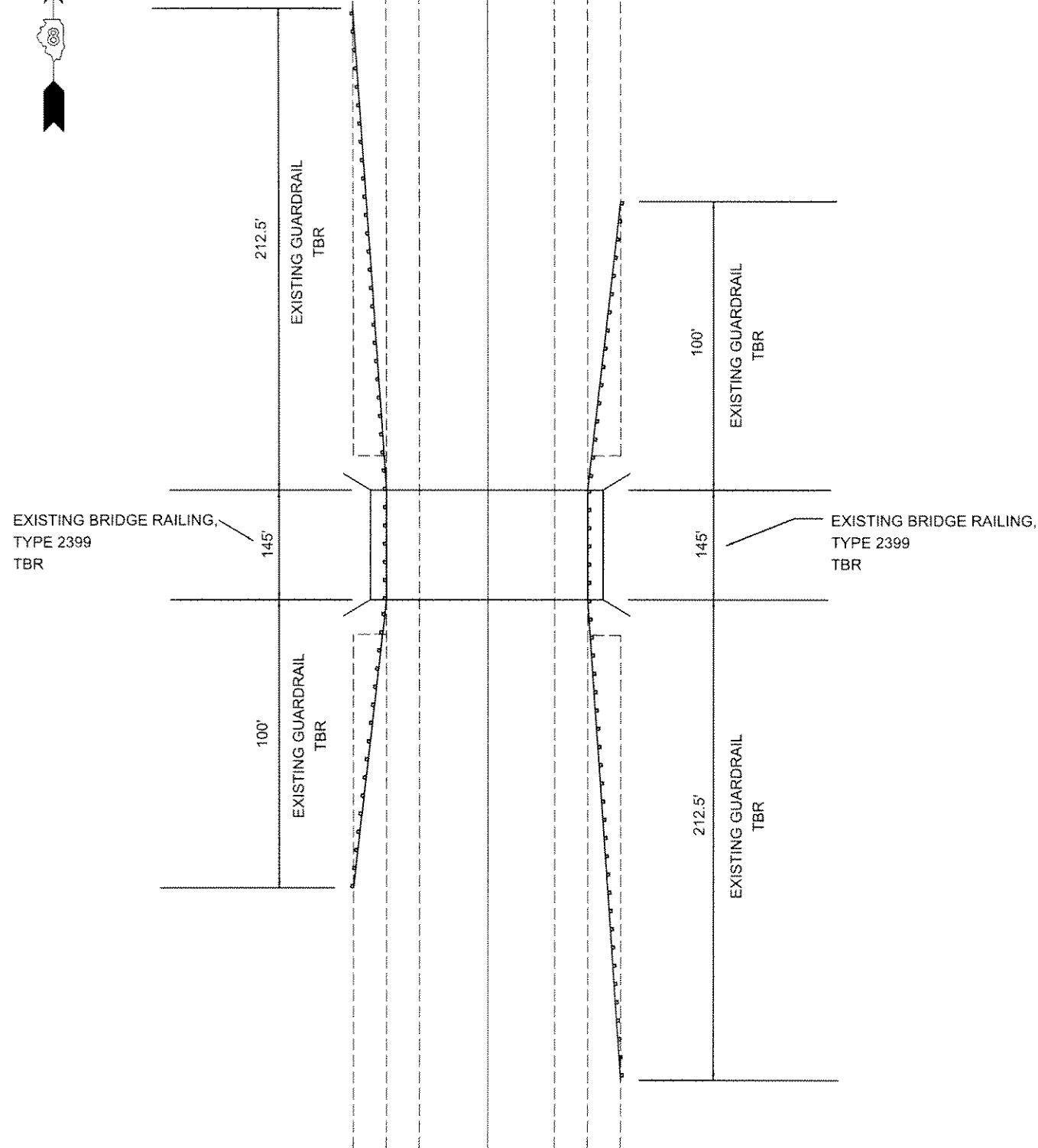
7-1-10

(16'-3" Maximum Post Spacing)

FILE NAME *	USER NAME *	DESIGNED -	REVISED	STATE OF ILLINOIS DEPARTMENT OF TRANSPORTATION	STEEL RAILING, TYPE 2399 STRUCTURE NO. 061-0003, 0004, 0005	F.A. RTE.	SECTION	COUNTY	TOTAL SHEETS	SHEET NO.	OF	SHEETS		
		CHECKED -	REVISED			322	(26,27,28)RS-3	Marion	14	11				
		DRAWN -	REVISED											
		CHECKED -	REVISED											
										CONTRACT NO. 76H18				
										ILLINOIS FED. AID PROJECT				

NOT TO SCALE

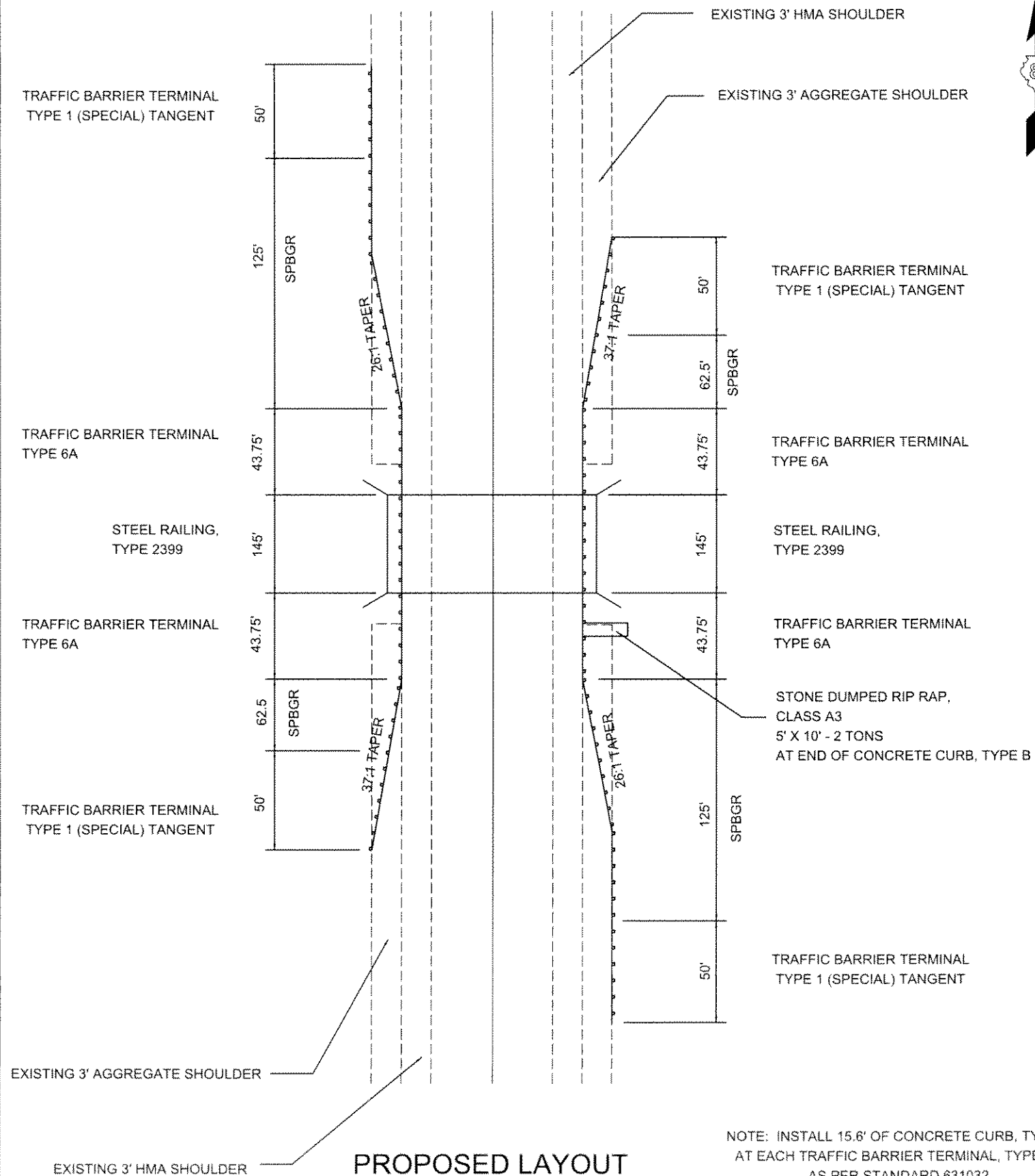
S.N. 061-0005 - 128.03



EXISTING LAYOUT

NOT TO SCALE

S.N. 061-0005 - 128.03



PROPOSED LAYOUT

FILE NAME =	USER NAME = DEFAULT	DESIGNED -	REVISED -
ci:\pwwork\pwwork\murr\egde\08382778\d87	DNB-ahf.plandgn	DRAWN -	REVISED -
	PLOT SCALE = 99.9691' / in.	CHECKED -	REVISED -
	PLOT DATE = 5/21/2014	DATE -	REVISED -

STATE OF ILLINOIS
DEPARTMENT OF TRANSPORTATION

GUARDRAIL DETAIL

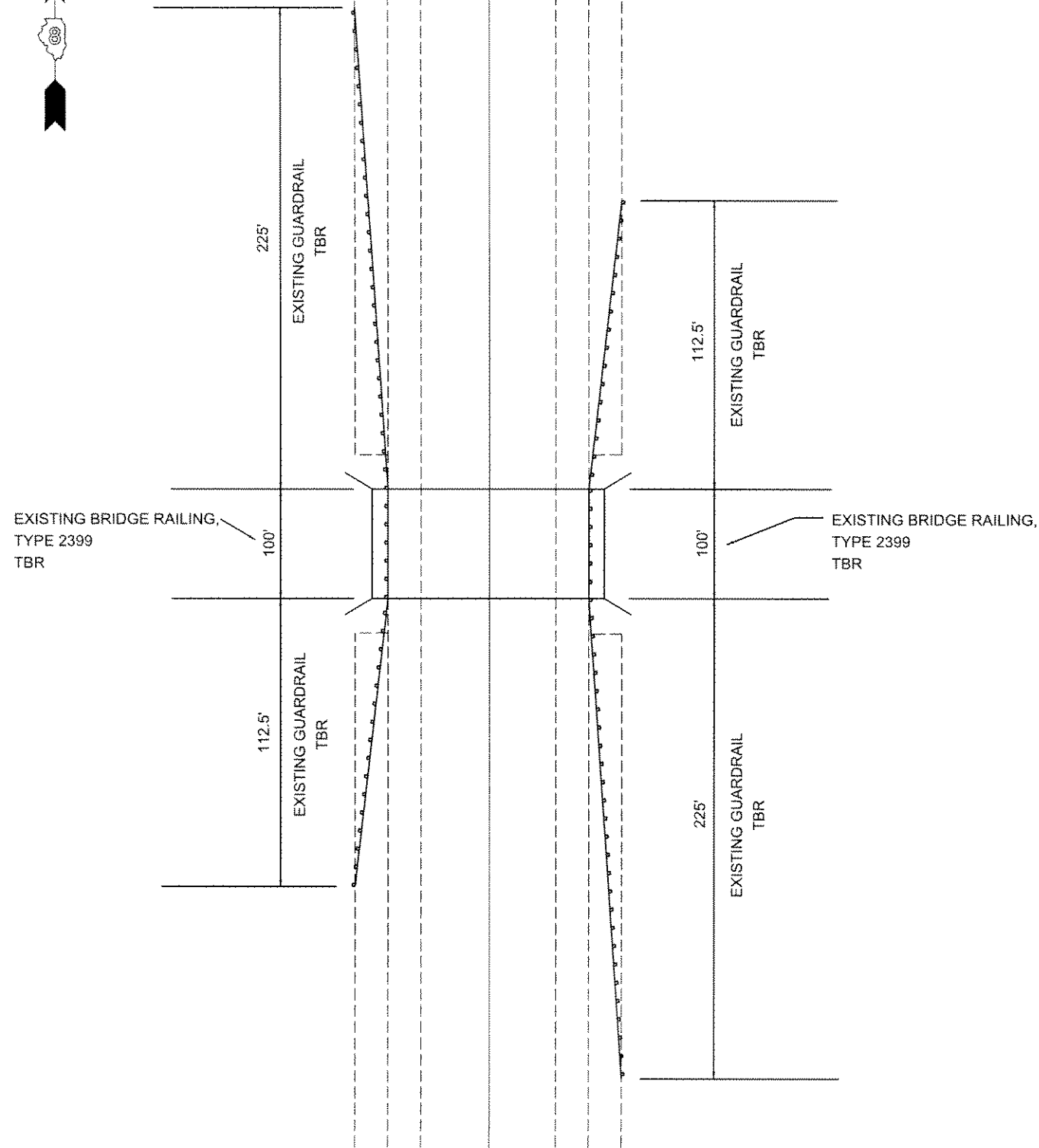
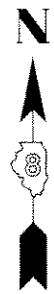
SCALE: _____ SHEET NO. ____ OF _____ SHEETS STA. _____ TO STA. _____

F.A. RTE.	SECTION	COUNTY	TOTAL SHEETS	SHEET NO.
322	(26,27,28)RS-3	MARION	14	12
T6H18				

FED. ROAD DIST. NO. _____ ILLINOIS FED. AID PROJECT

NOT TO SCALE

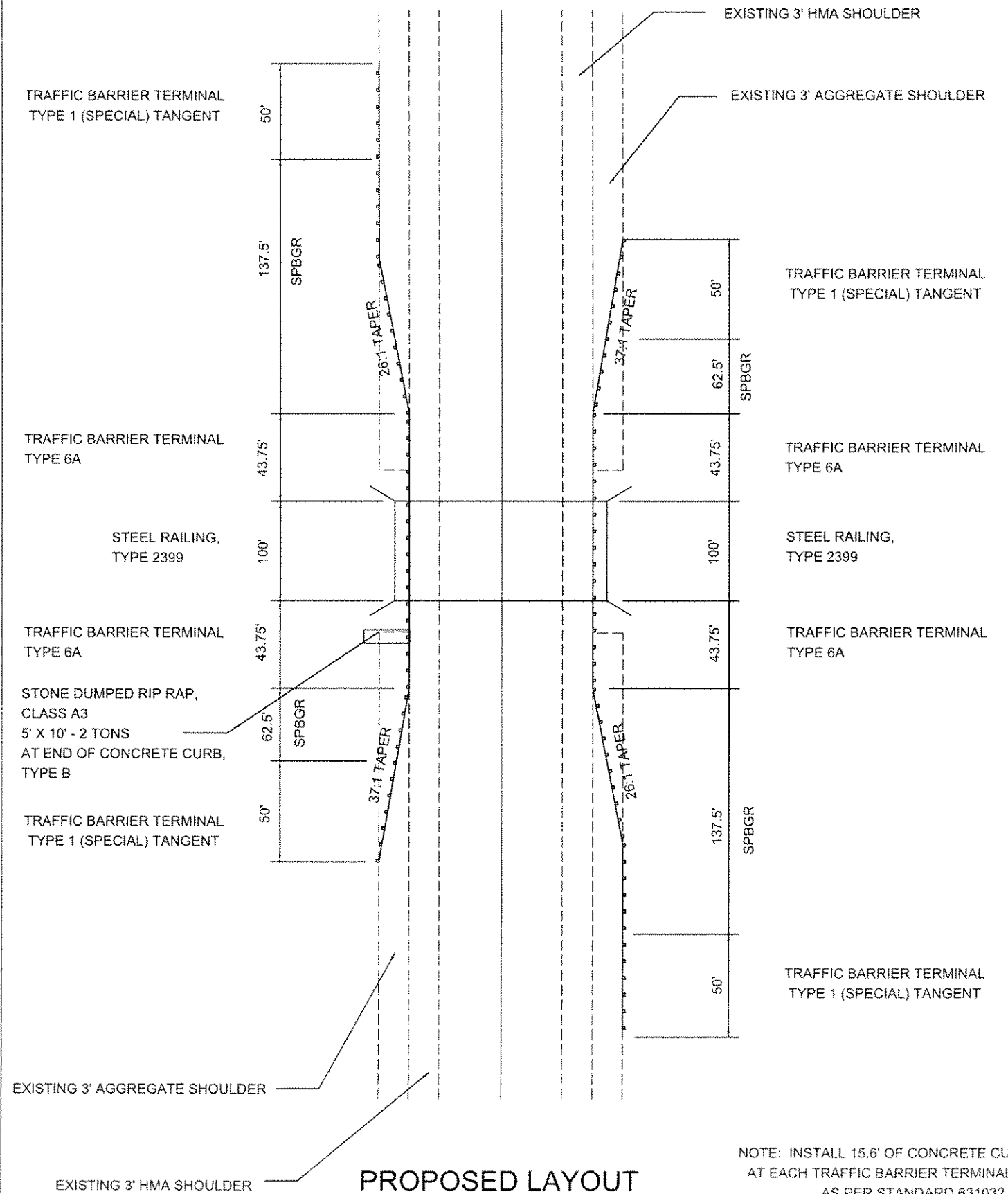
S.N. 061-0004 - 128.40



EXISTING LAYOUT

NOT TO SCALE

S.N. 061-0004 - 128.40



PROPOSED LAYOUT

NOTE: INSTALL 15.6' OF CONCRETE CURB, TYPE B AT EACH TRAFFIC BARRIER TERMINAL, TYPE 6A AS PER STANDARD 631032

FILE NAME :	USER NAME : DEFAULT	DESIGNED -	REVISED -
c:\pwork\pwidot\murray\ad0382778\ad0382778-1818-sht-plandgn		DRAWN -	REVISED -
PLOT SCALE = 99.8354' / in.		CHECKED -	REVISED -
PLOT DATE = 5/21/2014		DATE -	REVISED -

STATE OF ILLINOIS
DEPARTMENT OF TRANSPORTATION

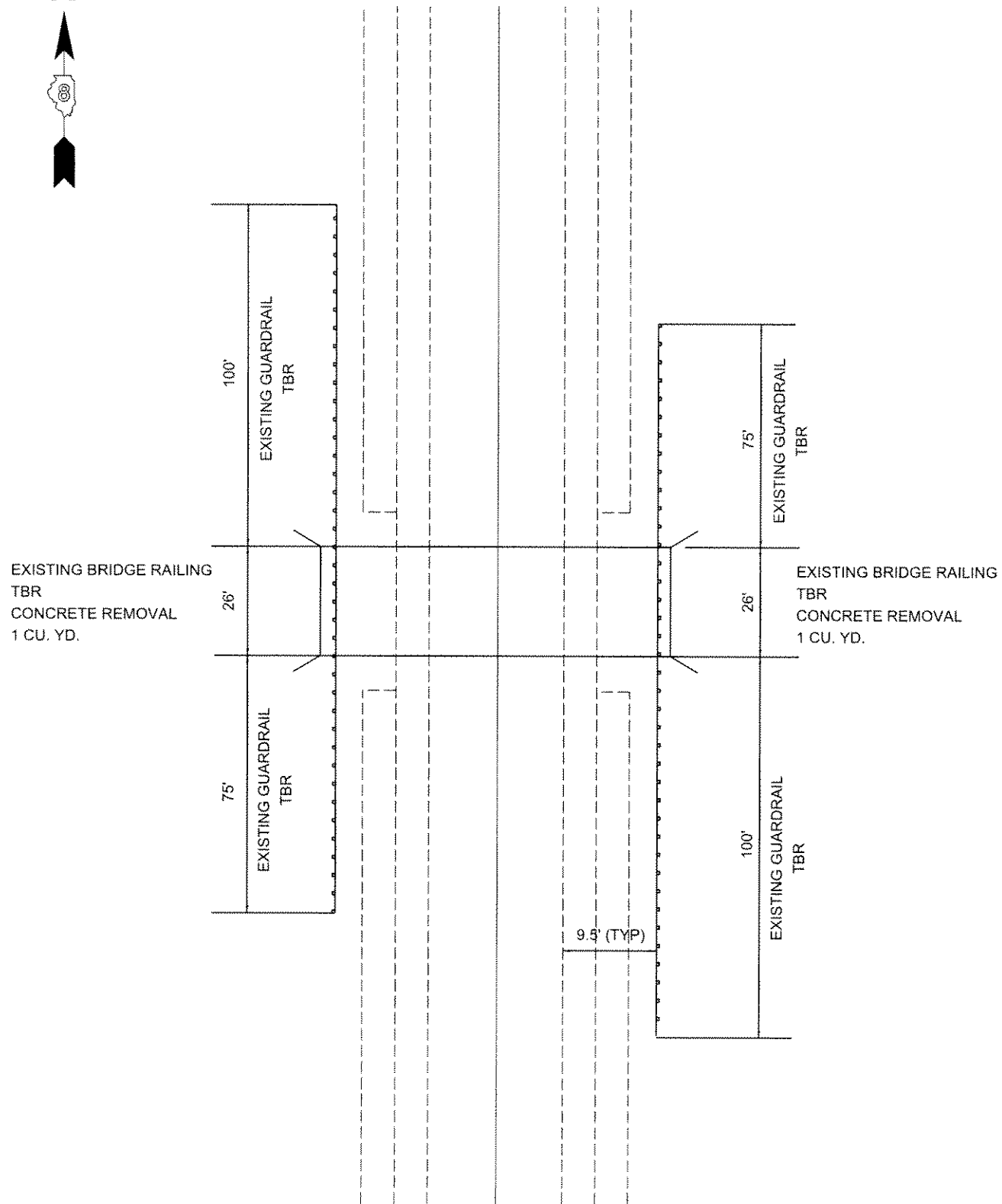
GUARDRAIL DETAIL

SCALE: _____ SHEET NO. ____ OF ____ SHEETS STA. _____ TO STA. _____

F.A. RTE.	SECTION	COUNTY	TOTAL SHEETS	SHEET NO.
322	(26,27,28)RS-3	MARION	14	13
CONTRACT NO. 76H18				
FED. ROAD DIST. NO. . ILLINOIS FED. AID PROJECT				

NOT TO SCALE

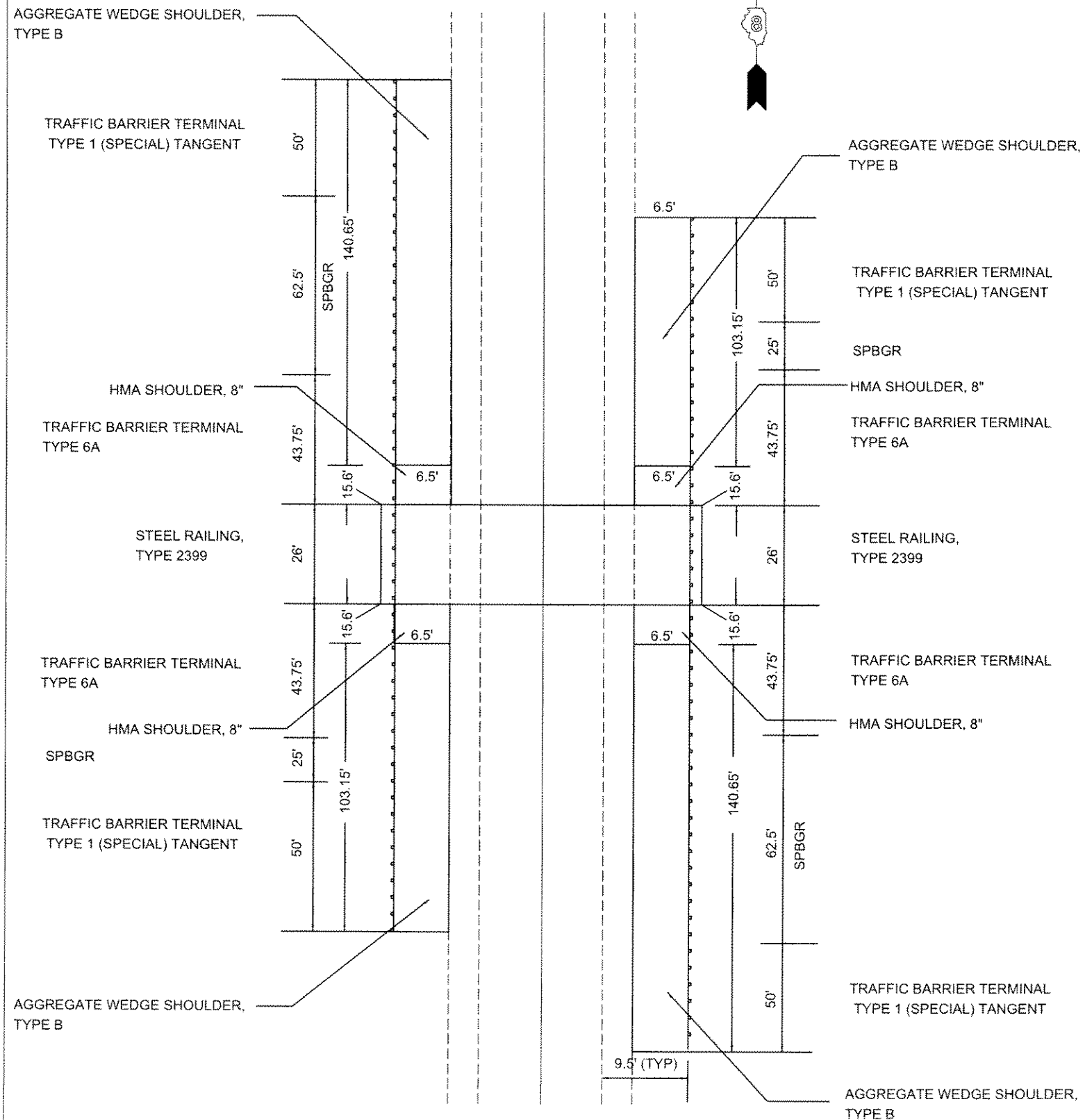
S.N. 061-0003 - 129.84



EXISTING LAYOUT

S.N. 061-0003 - 129.84

NOT TO SCALE



PROPOSED LAYOUT

NOTE: INSTALL STONE DUMPED RIP RAP CLASS A3 BEHIND PROPOSED HMA SHOULDER 1 TON EACH QUADRANT

NOTE: INSTALL 15.6' OF CONCRETE CURB, TYPE B AT EACH TRAFFIC BARRIER TERMINAL, TYPE 6A AS PER STANDARD 631032

FILE NAME	USER NAME	DESIGNED	REVISED
01\pw\work\paw\murray\da\838277\B.dgn	DEFAULT		
	PH18-shr-plan.dgn	DRAWN	REVISED
		CHECKED	REVISED
		DATE	REVISED

STATE OF ILLINOIS
DEPARTMENT OF TRANSPORTATION

GUARDRAIL DETAIL

SCALE: SHEET NO. OF SHEETS STA. TO STA.

F.A. RTE.	SECTION	COUNTY	TOTAL SHEETS	SHEET NO.
322	126,27,28/RS-3	MARION	14	14
CONTRACT NO. 76H18				

FED. ROAD DIST. NO. ILLINOIS FED. AID PROJECT