

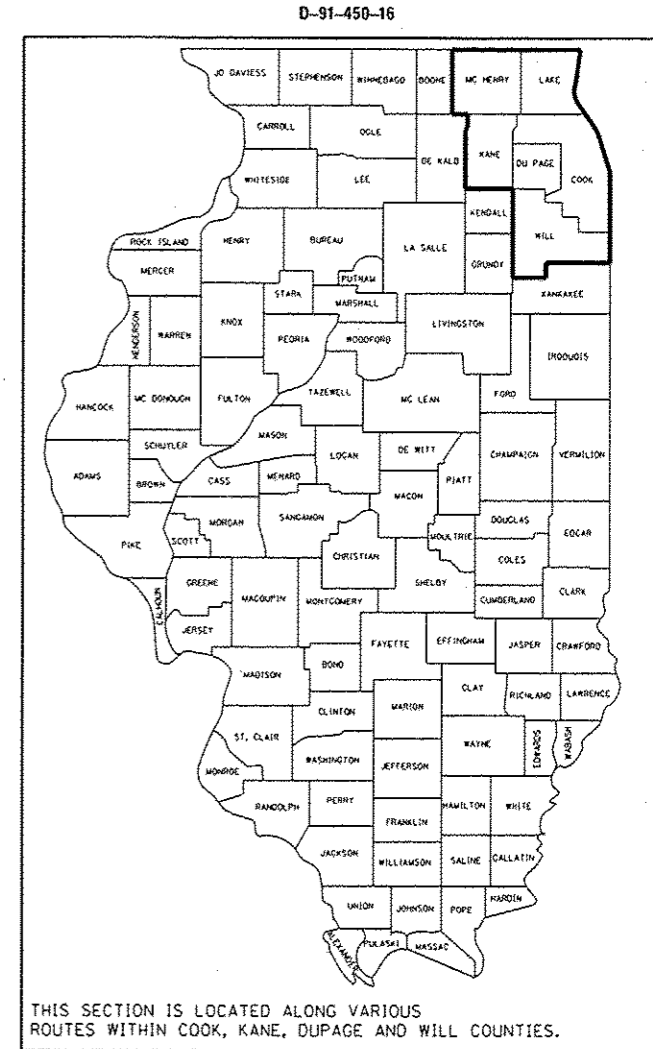
STATE OF ILLINOIS  
DEPARTMENT OF TRANSPORTATION

F.A. RTE.	SECTION	COUNTY	TOTAL SHEETS	SHEET NO.
VAR.	2016-046GRR	VARIOUS	29	1
FED. ROAD DIST. NO.	ILLINOIS	CONTRACT NO. 62D27		

FOR INDEX OF SHEETS, SEE SHEET NO. 2

# PROPOSED HIGHWAY PLANS

**ROUTE: VARIOUS EXPRESSWAYS AND ARTERIAL  
HIGHWAYS – SOUTHERN PART, DISTRICT ONE  
GUARDRAIL REPAIR  
SECTION: 2016-046GRR  
COUNTY: VARIOUS  
C-91-450-16**



**SEE LOCATION MAPS  
SHEETS 5 THRU 13**

C.U.A.N.  
CHICAGO UTILITY ALERT NETWORK  
1-312-744-7000

J.U.L.I.E.  
JOINT UTILITY LOCATION INFORMATION FOR EXCAVATION  
1-800-892-0123  
OR 811

PROJECT ENGINEER: J. ALAIN MIDY (847) 221-3056  
PROJECT MANAGER: ISSAM RAYYAN (847)705-4178

CONTRACT NO. 62D27

STATE OF ILLINOIS  
DEPARTMENT OF TRANSPORTATION

SUBMITTED June 29 2016

John E. [Signature]  
REGIONAL ENGINEER

Aug 12 2016  
Marion M. [Signature] P.E.  
ENGINEER OF DESIGN AND ENVIRONMENT

Aug 12 2016  
[Signature]  
DIRECTOR OF PROGRAM DEVELOPMENT 2

**PRINTED BY THE AUTHORITY  
OF THE STATE OF ILLINOIS**

**INDEX OF SHEETS**

1. TITLE SHEET
2. INDEX OF SHEETS  
LIST OF APPLICABLE STATE STANDARDS  
GENERAL NOTES
- 3-4. SUMMARY OF QUANTITIES
5. SOUTH COOK COUNTY LOCATION MAP
6. SOUTH KANE COUNTY LOCATION MAP
7. SOUTH DUPAGE COUNTY LOCATION MAP
8. WILL COUNTY LOCATION MAP
9. MCHENRY COUNTY LOCATION MAP
10. LAKE COUNTY LOCATION MAP
11. NORTH KANE COUNTY LOCATION MAP
12. NORTH DUPAGE COUNTY LOCATION MAP
13. NORTH COOK COUNTY LOCATION MAP
14. TYPICAL DETAIL TO ANCHOR STEEL PLATE BEAM  
GUARDRAIL ON CONCRETE (BM-02)
15. TYPICAL DETAIL FOR GUARDRAIL ANCHOR BLOCK REPAIR (BM-03)
16. TYPICAL DETAILS FOR STEEL PLATE BEAM  
GUARDRAIL ANCHORAGE REPAIR (BM-04)
17. DETAIL FOR CENTER LONGITUDINAL GUARDRAIL JOINT (BM-05)
18. DETAIL OF STEEL PLATE BEAM GUARDRAIL SPECIAL (BM-06)
19. DETAIL OF GUARDRAIL SUPPORT AND END ANCHORAGE (BM-07)
20. DETAIL OF THRIE-BEAM GUARDRAIL WITH MODIFIED OFFSET BLOCK
21. STEEL PLATE BEAM GUARDRAIL STEEL BLOCK-OUT DETAIL
22. CURB REMOVAL (PARTIAL) AND SHOULDER WIDENING  
FOR TRAFFIC BARRIER TERMINAL, TYPE 1, SPECIAL
23. STEEL BRIDGE RAIL DETAIL
- 24-26. T6 TERMINAL FOR USE WITH 21" HIGH SPBGR (BM-22)
27. EXIT AND ENTRANCE RAMP CLOSURE DETAILS (TC-08)
28. TRAFFIC CONTROL DETAIL FOR SHOULDER CLOSURE AND PARTIAL  
RAMP CLOSURE (TC-17)
29. SIGNING FOR FLAGGING OPERATIONS AT WORK ZONE  
OPENINGS (TC-18)

**LIST OF STATE STANDARDS**

- |           |   |
|-----------|---|
| 630001-11 | STEEL PLATE BEAM GUARDRAIL  |
| 630301-07 | SHOULDER WIDENING FOR TYPE 1 (SPECIAL) GUARDRAIL TERMINALS                      |
| 631006-08 | TRAFFIC BARRIER TERMINAL, TYPE 1B   |
| 631011-10 | TRAFFIC BARRIER TERMINAL, TYPE 2  |
| 631026-06 | TRAFFIC BARRIER TERMINAL, TYPE 5  |
| 631031-15 | TRAFFIC BARRIER TERMINAL, TYPE 6  |
| 701006-05 | OFF-RD OPERATIONS, 2L, 2W, 15' TO 24" FROM PAVEMENT EDGE                        |
| 701011-04 | OFF-RD MOVING OPERATIONS, 2L, 2W, DAY ONLY                                      |
| 701201-04 | LANE CLOSURE, 2L, 2W, DAY ONLY, FOR SPEEDS $\geq$ 45 MPH                        |
| 701301-04 | LANE CLOSURE, 2L, 2W, SHORT TIME OPERATIONS                                     |
| 701311-03 | LANE CLOSURE, 2L, 2W, MOVING OPERATIONS, DAY ONLY                               |
| 701400-09 | APPROACH TO LANE CLOSURE, FREEWAY/EXPRESSWAY                                    |
| 701401-10 | LANE CLOSURE, FREEWAY/EXPRESSWAY  |
| 701411-09 | LANE CLOSURE, MULTILANE, AT ENTRANCE OR EXIT RAMP, FOR SPEED $\geq$ 45 MPH      |
| 701421-08 | LANE CLOSURE, MULTILANE, DAY OPERATIONS ONLY FOR SPEEDS $\geq$ 45 MPH TO 55 MPH |
| 701427-05 | LANE CLOSURE, MULTILANE, INTERMITTANT OR MOVING OPERATIONS $\leq$ 40 MPH        |
| 701428-01 | TRAFFIC CONTROL SETUP AND REMOVAL FREEWAY/EXPRESSWAY                            |
| 701501-06 | URBAN LANE CLOSURE, 2L, 2W, UNDIVIDED   |
| 701601-09 | URBAN LANE CLOSURE, MULTILANE, 1W OR 2W, WITH NONTRAVERSABLE MEDIAN             |
| 701606-10 | URBAN LANE CLOSURE, MULTILANE, 2W WITH MOUNTABLE MEDIAN                         |
| 701701-10 | URBAN LANE CLOSURE, MULTILANE INTERSECTION                                      |
| 701801-06 | LANE CLOSURE MULTILANE 1W OR 2W CROSSWALK OR SIDEWALK CLOSURE                   |
| 701901-06 | TRAFFIC CONTROL DEVICES   |
| 720011-01 | METAL POSTS FOR SIGNS, MARKERS & DELINEATORS                                    |

**GENERAL NOTES**

BEFORE STARTING ANY EXCAVATION, THE CONTRACTOR SHALL CALL "J.U.L.I.E." AT (800) 892-0123 OR 811 OR "C.U.A.N." AT (312) 744-700 FOR FIELD LOCATIONS OF BURIED ELECTRIC, TELEPHONE AND GAS UTILITIES. 48 HOUR NOTIFICATION IS REQUIRED

ALL WORK IS TO BE REPLACED IN KIND OR AS INDICATED ON THE CONTRACT QUANTITY SHEET.

GUARDRAIL WORK WILL INCLUDE ALIGNMENT AS NECESSARY TO RESTORE THE RAIL TO THE ORIGINAL CONDITIONS.

REMOVAL OF DAMAGED MATERIALS WILL INCLUDE DISMANTLING, LOADING, HAULING AND DISPOSAL. THE WORK SITE WILL BE LEFT IN A SAFE AND ORDERLY CONDITION.

NO MATERIAL SHOULD BE LEFT ON OR NEAR THE ROADWAY DURING NON-WORKING HOURS.

ANY NECESSARY TRAFFIC CONTROL WILL BE PROVIDED BY THE CONTRACTOR; APPROPRIATE STANDARDS ARE HEREWITH ATTACHED.

THE LIMITS OF THE DAMAGED GUARDRAIL WILL BE MARKED WITH PAINT. THE REPLACEMENT PARTS AND THE QUANTITIES INDICATED ARE WITHIN THESE LIMITS AS MARKED.

REMOVED GUARDRAIL THAT IS NOT REPLACED ON THE SAME DAY MUST BE DELINEATED WITH LIGHTED BARRICADES. NO LOCATIONS WILL BE LEFT WITHOUT EITHER LIGHTED BARRICADES OR RESTORED GUARDRAIL AT ANY TIME.

GUARDRAIL MARKERS SHALL NOT BE ATTACHED TO TERMINAL SECTIONS.

THE CONTRACTOR SHALL TELEPHONE THE IDOT BUREAU OF TRAFFIC OPERATIONS, ELECTRICAL MAINTENANCE SECTION AT 708-524-2145 TO REQUEST THE LOCATE FOR INDERGROUND ELECTRICAL AND/OR FIBER CABLE PRIOR TO ANY DIGGING AS PER THE CONTRACT.

THE CONTRACTOR SHALL CONTACT THE TRAFFIC CONTROL SUPERVISOR AT (847) 705-4470 A MINIMUM OF 72 HOURS IN ADVANCE OF BEGINNING WORK.

REMOVAL OF EXISTING TERMINAL SECTIONS INCLUDED IN COST OF NEW TERMINAL SECTIONS

*Rev. Sheet 8-31-16*

FILE NAME =	USER NAME = pyranovskrb	DESIGNED -	REVISED -	<b>STATE OF ILLINOIS DEPARTMENT OF TRANSPORTATION</b>	<b>INDEX OF SHEETS, STATE STANDARDS AND GENERAL NOTES</b>	F.A. RTE.	SECTION	COUNTY	TOTAL SHEETS	SHEET NO.		
p:\11\084EBID\INTEG.illinois.gov\IDOT\Documents\IDOT Offices\District 1\Projects\0145\DRW\0145\0145016-shr-pln.dgn	DRW DATE = 7/14/2016	CHECKED -	REVISED -			VAR.	2016-046GRR	VARIOUS	29	2		
PLOT SCALE = 99.9998 // in.	DATE -	REVISED -	SCALE:			SHEET NO.	OF	SHEETS	STA.	TO STA.	FED. ROAD DIST. NO.	ILLINOIS FED. AID PROJECT
PLOT DATE = 7/14/2016	DATE -	REVISED -								CONTRACT NO. 62027		

SUMMARY OF QUANTITIES			URBAN CONSTRUCTION TYPE CODE 0021			
CODE NO	ITEM	UNIT	TOTAL QUANTITIES	CONT. MAIN. 100% STATE 0021	100% MCHD 0021	
63000001	STEEL PLATE BEAM GUARDRAIL, TYPE A, 6 FOOT POSTS	FOOT	87	70	17	
63100041	TRAFFIC BARRIER TERMINAL, TYPE 1B	EACH	2	1	1	
63100045	TRAFFIC BARRIER TERMINAL, TYPE 2	EACH	6	4	2	
63100070	TRAFFIC BARRIER TERMINAL, TYPE 5	EACH	2	1	1	
63100085	TRAFFIC BARRIER TERMINAL, TYPE 6	EACH	2	1	1	
63100167	TRAFFIC BARRIER TERMINAL, TYPE 1 (SPECIAL) TANGENT	EACH	33	26	7	
63100169	TRAFFIC BARRIER TERMINAL, TYPE 1 (SPECIAL) FLARED	EACH	6	5	1	
78200410	GUARDRAIL MARKERS, TYPE A	EACH	350	280	70	
72501000	TERMINAL MARKER - DIRECT APPLIED	EACH	9	7	2	
X0321563	REPAIR TRAFFIC BARRIER TERMINAL TYPE 1 SPECIAL	EACH	219	175	44	
X2300001	MISSING OR FAILED ANCHOR CABLES	EACH	10	8	2	
X2300002	MISSING OR FAILED LAG BOLTS	EACH	10	8	2	
X4402302	CURB REMOVAL (PARTIAL)	FOOT	87	70	17	
X6300210	GUARDRAIL BLOCKS	EACH	1049	839	210	
X6300215	RAIL ELEMENT PLATES	EACH	1311	1049	262	
X6300217	RAIL ELEMENT PLATES (RADIUS)	EACH	87	70	17	

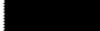
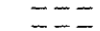

SUMMARY OF QUANTITIES			URBAN CONSTRUCTION TYPE CODE 0021			
CODE NO	ITEM	UNIT	TOTAL QUANTITIES	CONT. MAIN. 100% STATE 0021	100% MCHD 0021	
X6300222	CONNECTING END SECTION	EACH	2	1	1	
X6300224	RETURN END SECTION	EACH	2	1	1	
X6300225	SINGLE END SECTION	EACH	7	6	1	
X6300230	STEEL POSTS	EACH	874	699	175	
X6300310	REMOVE AND REPLACE GUARDRAIL CHANNEL	EACH	52	42	10	
X6300610	THREE BEAM GUARDRAIL ELEMENT PLATES	EACH	3	2	1	
X6300620	THREE-BEAM MODIFIED BLOCKS	EACH	3	2	1	
X6300630	THREE-BEAM POSTS	EACH	3	2	1	
X6300640	THREE BEAM RADIUS ELEMENT PLATES	EACH	3	2	1	
X6310163	TRAFFIC BARRIER TERMINAL, TYPE 1, NOSE	EACH	6	5	1	
X6310177	TRAFFIC BARRIER TERMINAL, TYPE 3 (SPECIAL)	EACH	3	2	1	
X6310203	TRAFFIC BARRIER TERMINAL, TYPE 3 SPECIAL, NOSE	EACH	2	1	1	
X6330800	GUARDRAIL POST VERTICAL ADJUSTMENT	EACH	17	14	3	
X6331105	STEEL POSTS, MODIFIED	EACH	14	11	3	
X6331110	STEEL POSTS, SPECIAL	EACH	13	10	3	
Z0007124	STEEL RAILING (SPECIAL)	FOOT	44	35	9	

16





### DISTRICT NO. 1

-  STATE HIGHWAYS & EXPRESSWAYS WITHIN STATE JURISDICTION. (EXCEPT TOLLWAYS) AND CITY MAINTENANCE AGREEMENTS UNDER STATE JURISDICTION
-  FUTURE HIGHWAYS
-  VARIOUS AGENCIES HIGHWAYS

STATE OF ILLINOIS  
DEPARTMENT OF TRANSPORTATION

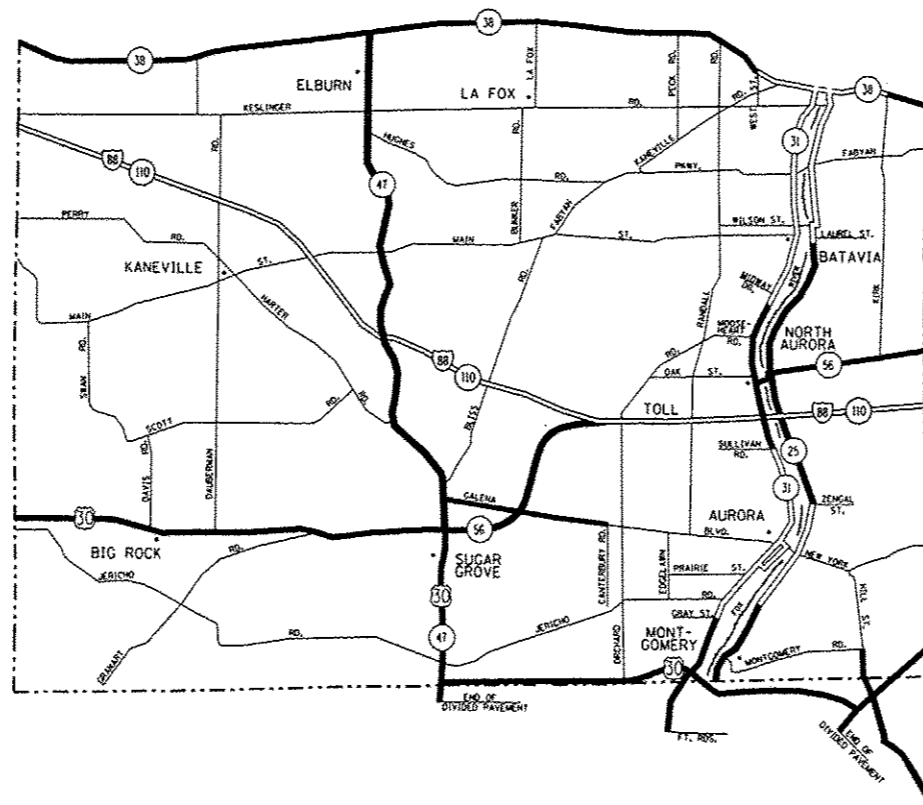
GUARDRAIL REPAIR LOCATION MAP COOK COUNTY  
SOUTH OF IL RTE 38

FILE NAME =	USER NAME = pjrzenowski-b	DESIGNED -	REVISED -
p:\1\1084EBIDINTEG.illinois.gov\PIDOT\Documents\DOT Offices\District 1\Projects\DI38\Drawings\Design\DI38415-sht-plan.dgn		CHECKED -	REVISED -
		DATE -	REVISED -

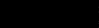


DESIGNED -	REVISED -
CHECKED -	REVISED -
DATE -	REVISED -

SCALE:	SHEET NO. OF SHEETS	STA. TO STA.
--------	---------------------	--------------

F.A. RTE.	SECTION	COUNTY	TOTAL SHEETS	SHEET NO.
VAR.	2016-046GRR	VARIOUS	29	5
CONTRACT NO. 62027				
FED. ROAD DIST. NO. ILLINOIS FED. AID PROJECT				



**DISTRICT NO. 1**

-  STATE HIGHWAYS & EXPRESSWAYS WITHIN STATE JURIDICITION. (EXCEPT TOLLWAYS) AND CITY MAINTENANCE AGREEMENTS UNDER STATE JURIDICITION
-  FUTURE HIGHWAYS
-  VARIOUS AGENCIES HIGHWAYS

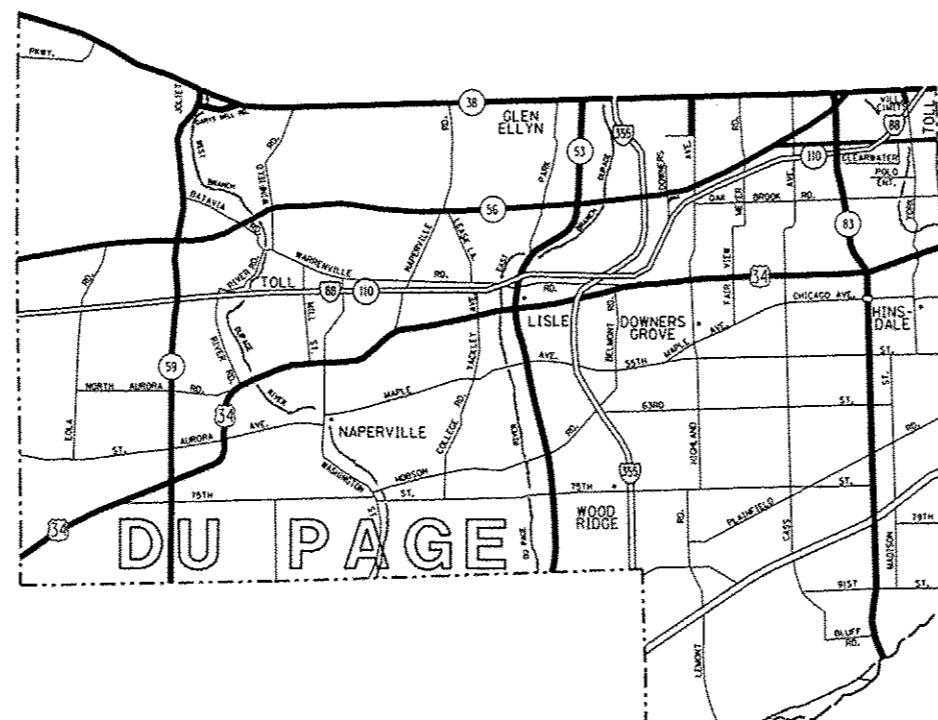
STATE OF ILLINOIS  
DEPARTMENT OF TRANSPORTATION

GUARDRAIL REPAIR LOCATION MAP KANE COUNTY  
SOUTH OF IL RTE 38



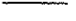
FILE NAME	USER NAME	DESIGNED	REVISED
p:\11\884EBIDINTEC\illinois.gov\PI\1001\Documents\1001 Offices\District 1\Projects\0138415\0138415-shr-plan.dgn	pyzhenovskirb	BRUNO	REVISED
		CHECKED	REVISED
		DATE	REVISED

SCALE:	SHEET NO.	OF	SHEETS	STA.	TO	STA.

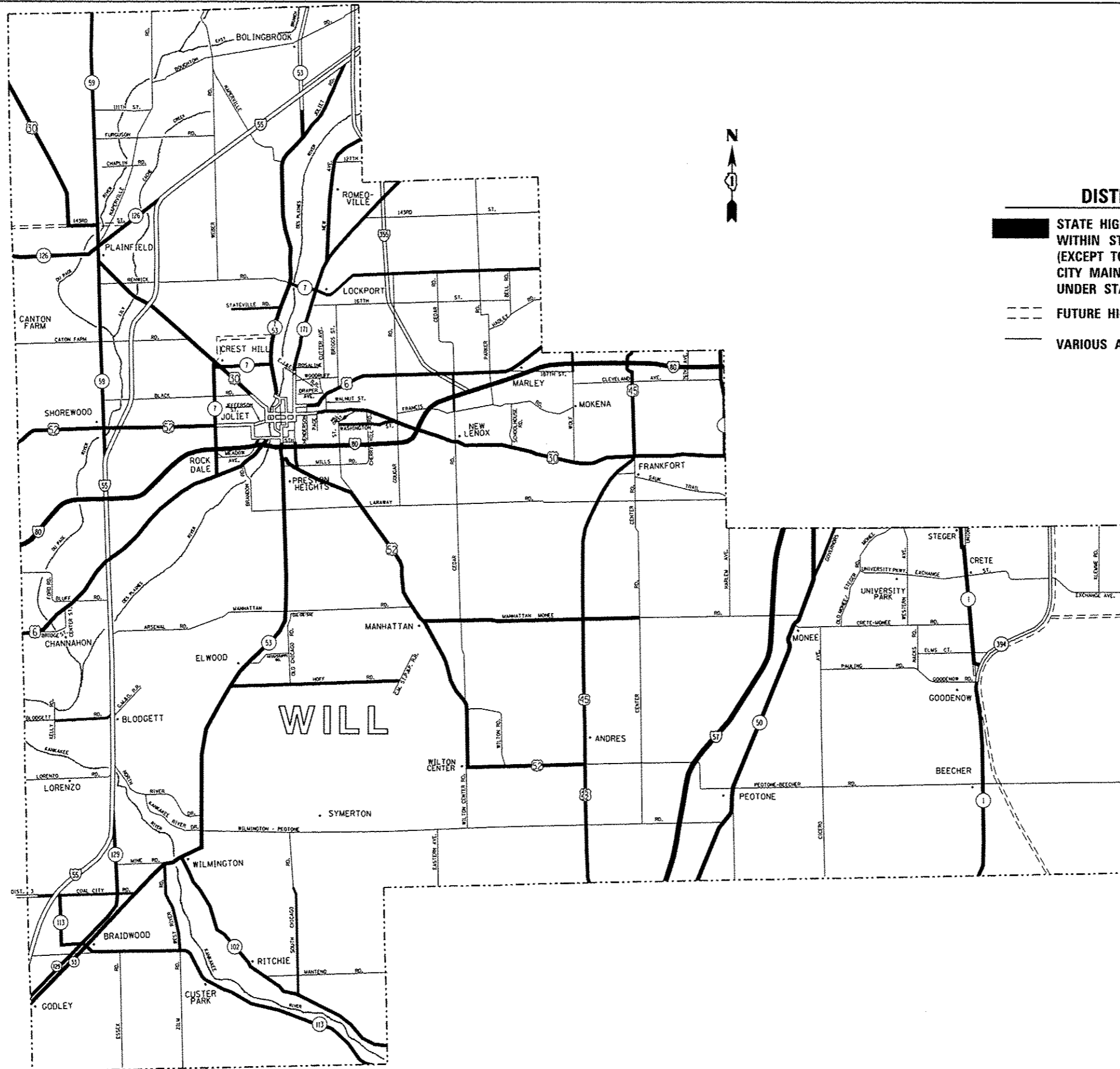
F.A. RTE.	SECTION	COUNTY	TOTAL SHEETS	SHEET NO.
VAR.	2016-046RRR	VARIOUS	29	6
FED. ROAD DIST. NO.		ILLINOIS FED. AID PROJECT		
		CONTRACT NO. 62D27		



**DISTRICT NO. 1**

-  STATE HIGHWAYS & EXPRESSWAYS WITHIN STATE JURISDICTION. (EXCEPT TOLLWAYS) AND CITY MAINTENANCE AGREEMENTS UNDER STATE JURISDICTION
-  FUTURE HIGHWAYS
-  VARIOUS AGENCIES HIGHWAYS

FILE NAME * p:\1\084E6ID\INTEG\Illinois.gov\PKIDOT\Documents\100T\Office\District 1\Projects\DI384\Drawings\Design\DI38415-shr-plan.dgn	USER NAME * pyrzanowski	DESIGNED - pyrzanowski	REVISED - pyrzanowski	<b>STATE OF ILLINOIS DEPARTMENT OF TRANSPORTATION</b>	<b>GUARDRAIL REPAIR LOCATION MAP DuPAGE COUNTY SOUTH OF IL RTE 38</b>	F.A. RTE.	SECTION	COUNTY	TOTAL SHEETS	SHEET NO.
	PLOT SCALE * 1/80,000	CHECKED - pyrzanowski	REVISED - pyrzanowski			VAR.	2016-046GRR	VARIOUS	29	7
PLOT DATE * 6/15/2016	DATE - 6/15/2016	REVISED - pyrzanowski	REVISED - pyrzanowski	SCALE:	SHEET NO. OF SHEETS	STA.	TO STA.	FED. ROAD DIST. NO.	ILLINOIS FED. AID PROJECT	CONTRACT NO. 62D27



**DISTRICT NO. 1**

- STATE HIGHWAYS & EXPRESSWAYS WITHIN STATE JURISDICTION. (EXCEPT TOLLWAYS) AND CITY MAINTENANCE AGREEMENTS UNDER STATE JURISDICTION**
- FUTURE HIGHWAYS**
- VARIOUS AGENCIES HIGHWAYS**

**STATE OF ILLINOIS  
DEPARTMENT OF TRANSPORTATION**

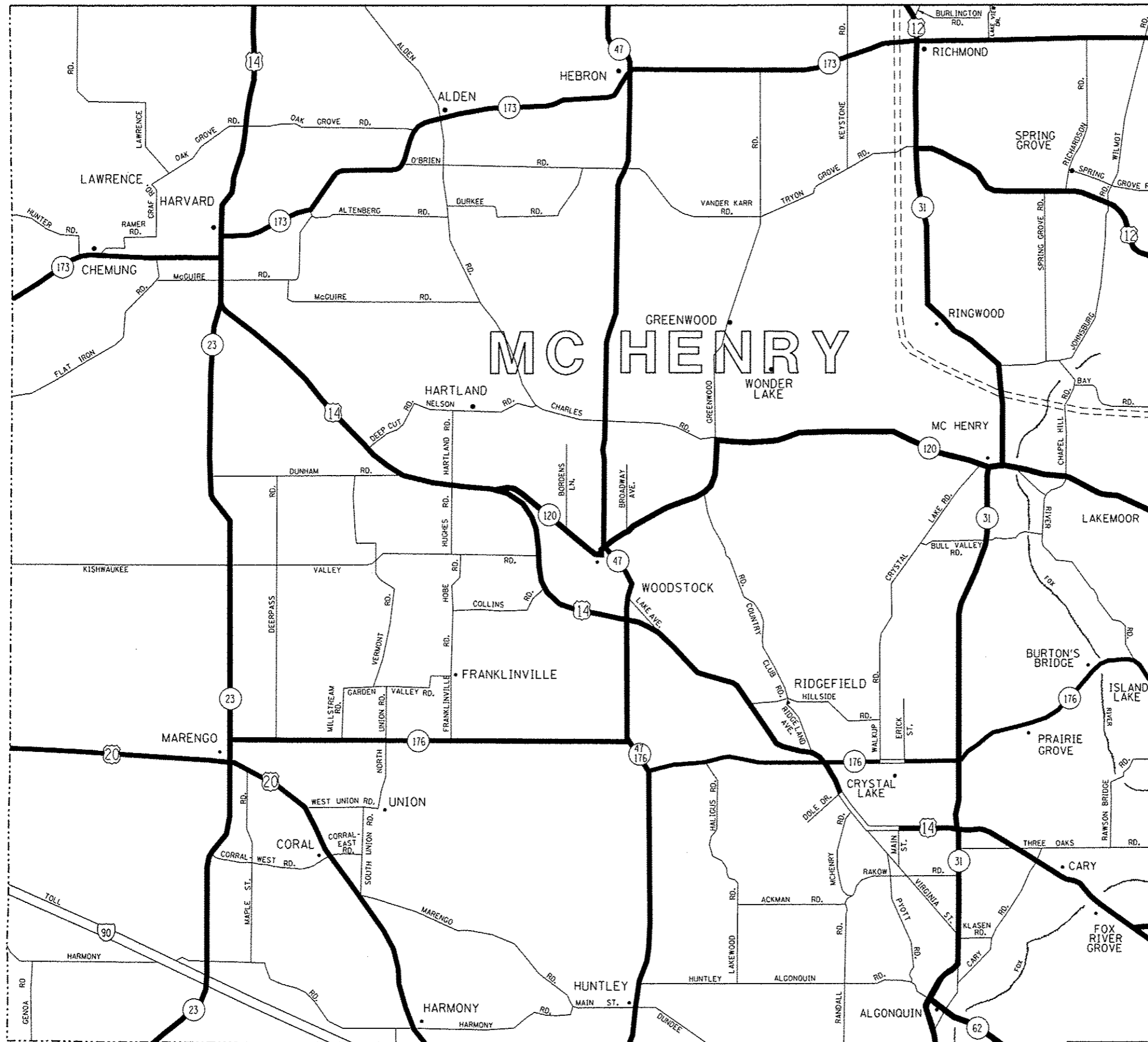
**GUARDRAIL REPAIR LOCATION MAP  
WILL COUNTY**

FILE NAME =	USER NAME = pgrzanawshrb	DESIGNED -	REVISED -
PH:\IL084E810\INTEC\illinois.gov\PWID01\Documents\1007_01\Files\District 1\Projects\013845\013845\Design\013845-shr-plan.dgn		REVISED -	REVISED -
		CHECKED -	REVISED -
PLOT SCALE = 100.0000 / in.		DATE -	REVISED -
PLOT DATE = 6/15/2016			

SCALE: SHEET NO. OF SHEETS STA. TO STA.

F.A. RTE.	SECTION	COUNTY	TOTAL SHEETS	SHEET NO.
VAR.	2016-046GRR	VARIOUS	29	8
FED. ROAD DIST. NO.		ILLINOIS FED. AID PROJECT		
		CONTRACT NO. 62D27		

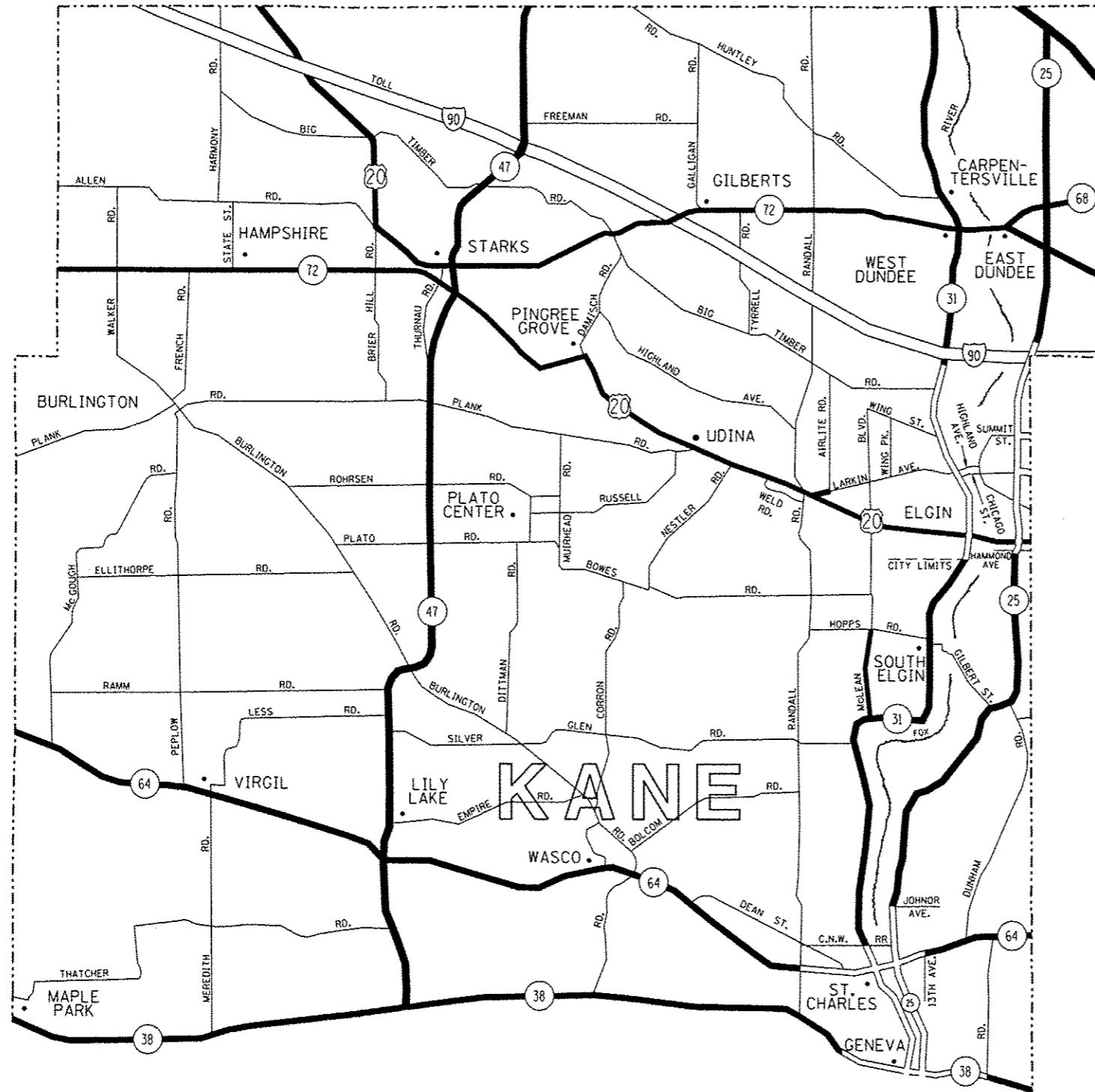




- DISTRICT NO. 1**
- STATE HIGHWAYS & EXPRESSWAYS WITHIN STATE JURISDICTION. (EXCEPT TOLLWAYS) AND CITY MAINTENANCE AGREEMENTS UNDER STATE JURISDICTION
  - FUTURE HIGHWAYS
  - VARIOUS AGENCIES HIGHWAYS

FILE NAME =	USER NAME = pyznowskjrb	DESIGNED -	REVISED -	<b>STATE OF ILLINOIS DEPARTMENT OF TRANSPORTATION</b>	<b>GUARDRAIL REPAIR LOCATION MAP McHENRY COUNTY</b>	F.A. RTE.	SECTION	COUNTY	TOTAL SHEETS	SHEET NO.	
p:\1108\EBID\INTEG\Illinois.gov\11001\Documents\1001\Offices\District 1\Projects\0136\0136\0136\Design\013615-shr-plan.dgn		REVISED -	REVISED -			VAR.	2016-046CRR	ILLINOIS	29	9	
PLOT SCALE = 100,0000 / 1"		CHECKED -	REVISED -			CONTRACT NO. 62D27					
PLOT DATE = 6/15/2016		DATE -	REVISED -			FED. ROAD DIST. NO. ILLINOIS FED. AID PROJECT					
					SCALE:		SHEET NO. OF SHEETS		STA. TO STA.		





**DISTRICT NO. 1**

- STATE HIGHWAYS & EXPRESSWAYS WITHIN STATE JURISDICTION. (EXCEPT TOLLWAYS) AND CITY MAINTENANCE AGREEMENTS UNDER STATE JURISDICTION**
- FUTURE HIGHWAYS**
- VARIOUS AGENCIES HIGHWAYS**

**STATE OF ILLINOIS  
DEPARTMENT OF TRANSPORTATION**

**GUARDRAIL REPAIR LOCATION MAP KANE COUNTY  
NORTH OF AND INCLUDING IL RTE 38**

FILE NAME :	USER NAME :	DESIGNED -	REVISED -
p:\11884EBIGINTEC\illinois.gov\PIWIDOT\Documents\DOT Offices\District 1\Projects\0138415\ht-plan.dgn	pyzonenavkirb	01/15/2016	01/15/2016
PLOT SCALE = 100,0000 / 1 in.	CHECKED -	REVISED -	REVISED -
PLOT DATE = 6/15/2016	DATE -	REVISED -	REVISED -

SCALE: SHEET NO. OF SHEETS STA. TO STA.

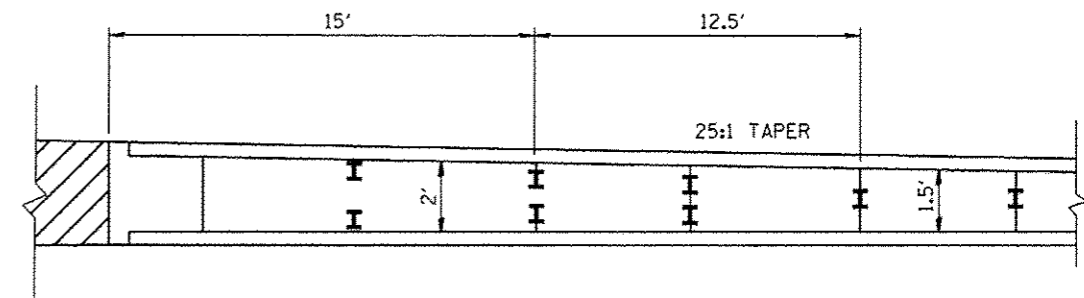
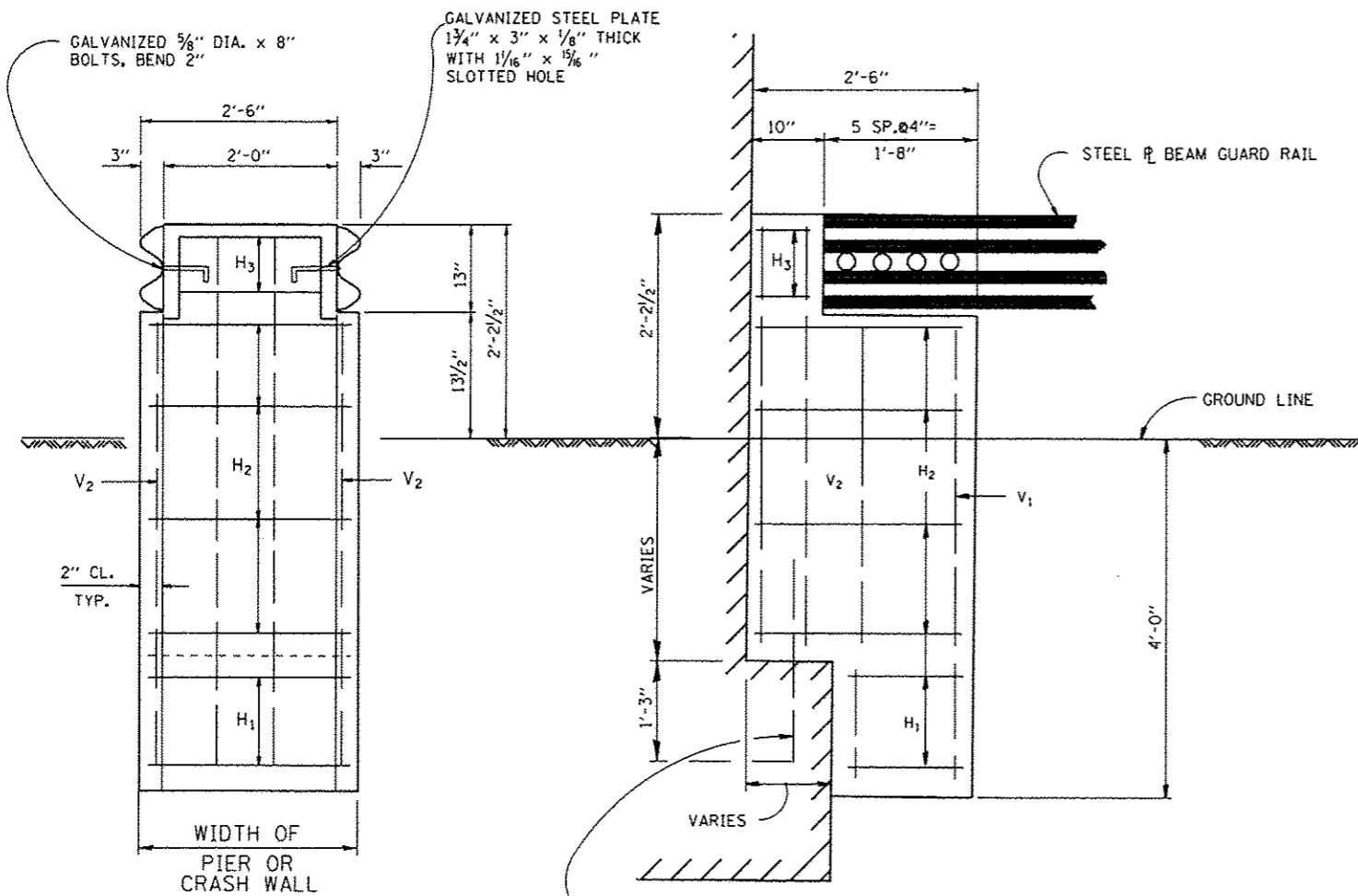
F.A. RTE.	SECTION	COUNTY	TOTAL SHEETS	SHEET NO.
VAR.	2016-046GRR	VARIOUS	29	11
FED. ROAD DIST. NO.		ILLINOIS FED. AID PROJECT		
		CONTRACT NO. 62D27		





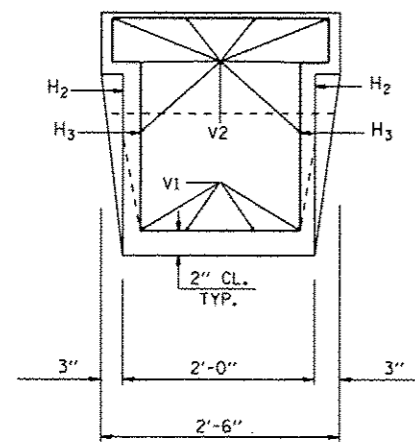




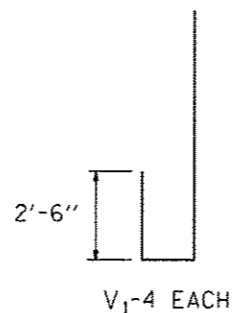
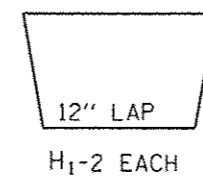
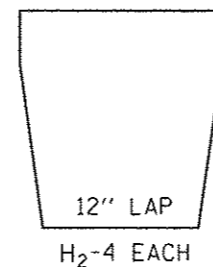
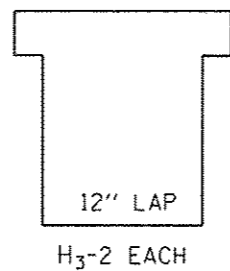


GUARD RAIL TRANSITIONS

NOTES: CLASS X CONCRETE SHALL BE USED THROUGHOUT REINFORCEMENT TO BE SIZE #4 UNLESS OTHERWISE NOTED



#6 DOWEL BARS DRILL AND GROUT ON ROW OF THREE BARS



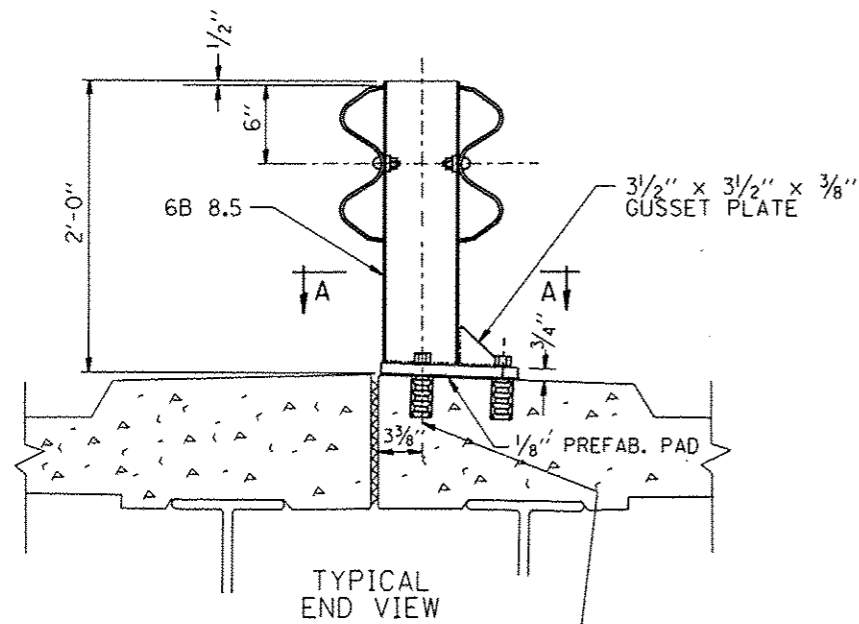
FILE NAME =	USER NAME = pyzonoekirb	DESIGNED -	REVISED - R, RITCHIE 05-02-00
p:\1\1084EBIDINTEG\Illinois.gov\PIDOT\Documents\DOT Offices\District 1\Projects\0138\DRW\2016\Design\2016-04-15-shr-plot.dgn		CHECKED -	REVISED -
PLOT SCALE = 100.0000' / in.		DATE - 10-31-88	REVISED -
PLOT DATE = 6/15/2016			

STATE OF ILLINOIS  
DEPARTMENT OF TRANSPORTATION

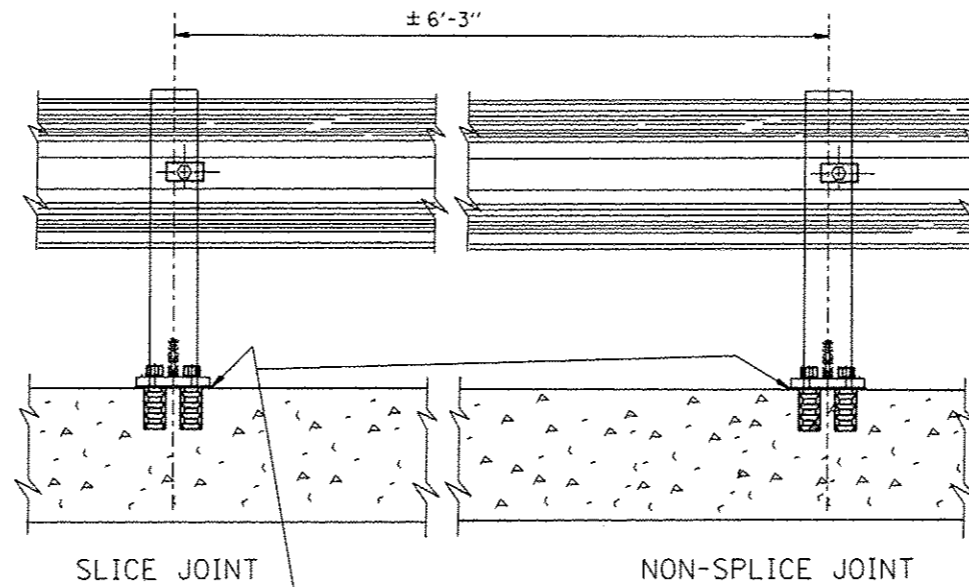
TYPICAL DETAILS FOR STEEL PLATE BEAM GUARDRAIL ANCHORAGE REPAIR  
SCALE: NONE SHEET NO. 1 OF 1 SHEETS STA. TO STA.

F.A. RTE.	SECTION	COUNTY	TOTAL SHEETS	SHEET NO.
VAR.	2016-046GRR	VARIOUS	29	16
	BM-04		CONTRACT NO. 62D27	
FED. ROAD DIST. NO. 1 ILLINOIS FED. AID PROJECT				

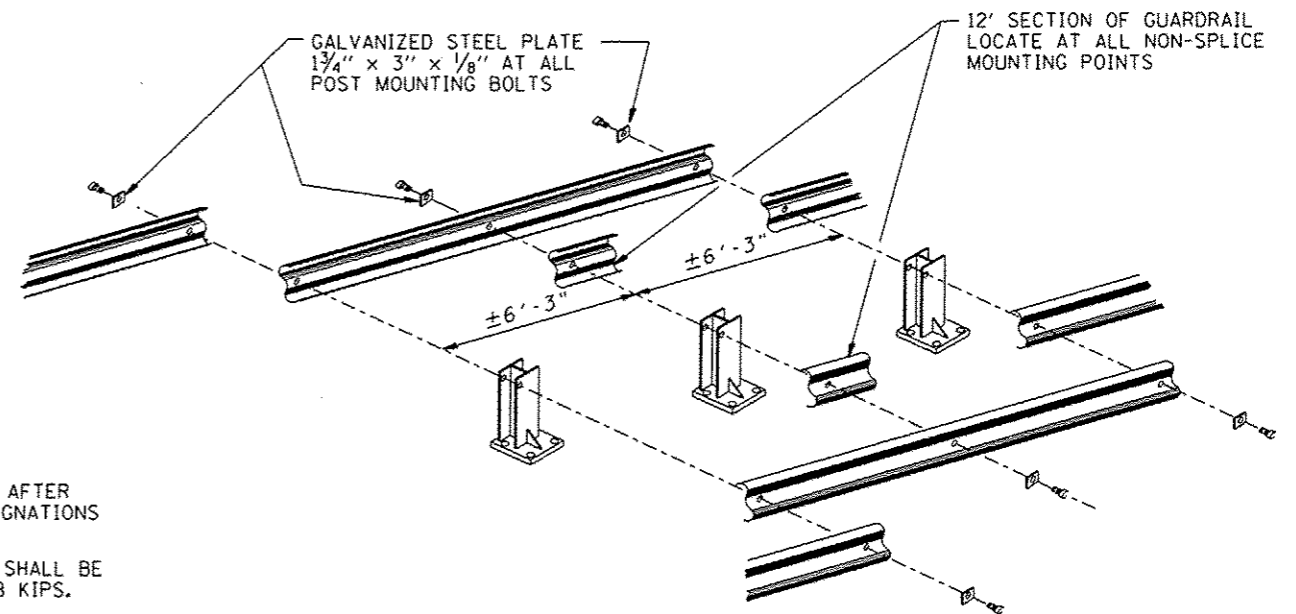




7/8" GALVANIZED ANCHOR BOLTS AND SELF DRILLING EXPANSION SHELLS OR MULTI UNIT TYPE ANCHORS 1/8" HOLES THRU BASE PLATE

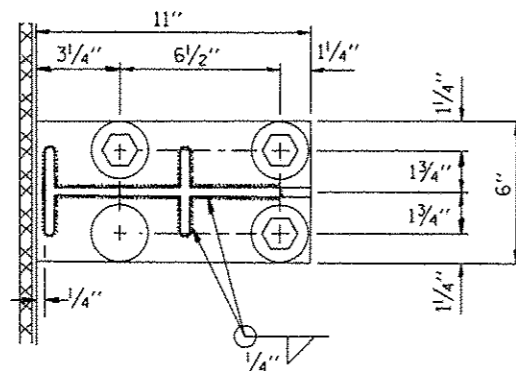


SEAL PERIMETER OF BASE OF POST TO MEDIAN WITH TWO COMPONENT NON-STAINING GRAY SEALING COMPOUND WITH POLYSULFIDE LIQUID POLYMERS - GUN GRADE WITH PRIMER



NOTE:

DIAMOND TIPPED DRILL SHALL BE USED TO DRILL THRU REINFORCEMENT BARS



SEC. A-A

NOTE:

POSTS SHALL BE HOT DIPPED GALVANIZED AFTER FABRICATION IN ACCORDANCE WITH ASTM DESIGNATIONS A-123 AND A-385.

TWO PERCENT (2%) OF ALL ANCHOR BOLTS SHALL BE TEST LOADED IN PLACE. MIN. TEST LOAD = 8 KIPS.

ALL BOLTS, NUTS AND WASHERS SHALL BE GALVANIZED IN ACCORDANCE WITH ASTM DESIGNATION A-153.

FOR MATERIAL COMPOSITION OF PREFABRICATED PAD, SEE ARTICLE 54.9(F), (BEARING AND ANCHORAGE), OF THE STANDARD SPECIFICATIONS.

PROVIDE 1-1/8" AND 2-1/16" GALVANIZED STEEL SHIMS FOR 25% OF THE POSTS.

IF ONE ANCHOR BOLT FAILS DURING TEST, TWO OTHER ANCHOR BOLTS SHALL BE TESTED. TESTING EQUIPMENT CAN BE OBTAINED FROM BOLT COMPANIES.

THIS SHEET IS FOR INFORMATION ONLY

FILE NAME =	USER NAME = pyzenawskirb	DESIGNED -	REVISED - R. RITCHIE 05-02-00
pw\ll884EBID\INTEG\Illinois.gov\PIDOT\Documents\DOT Offices\District 1\Projects\DISC\BMD\BMD-108415-ah-1-plan.dgn		CHECKED -	REVISED -
PLOT SCALE = 100.0000' / in.		DATE - 10-31-88	REVISED -
PLOT DATE = 6/15/2016			REVISED -

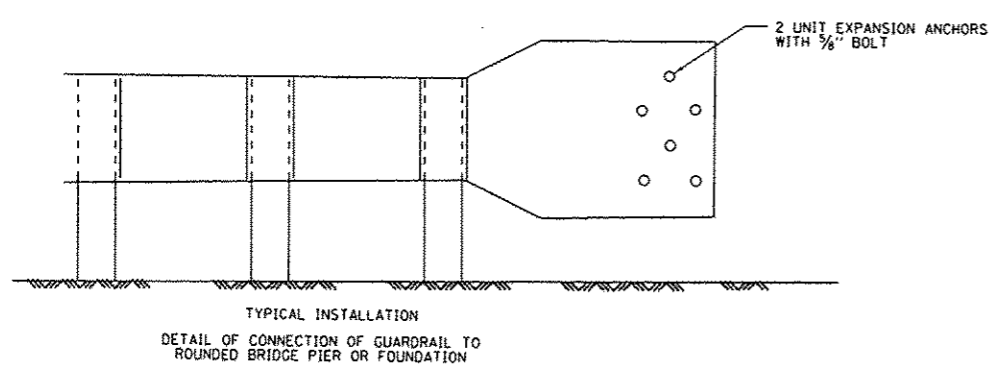
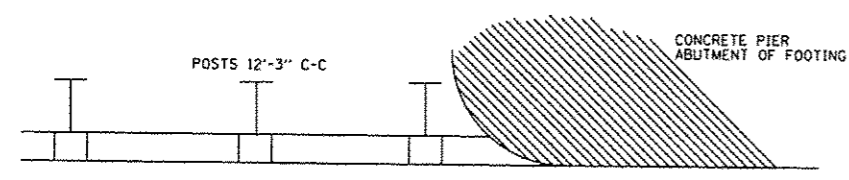
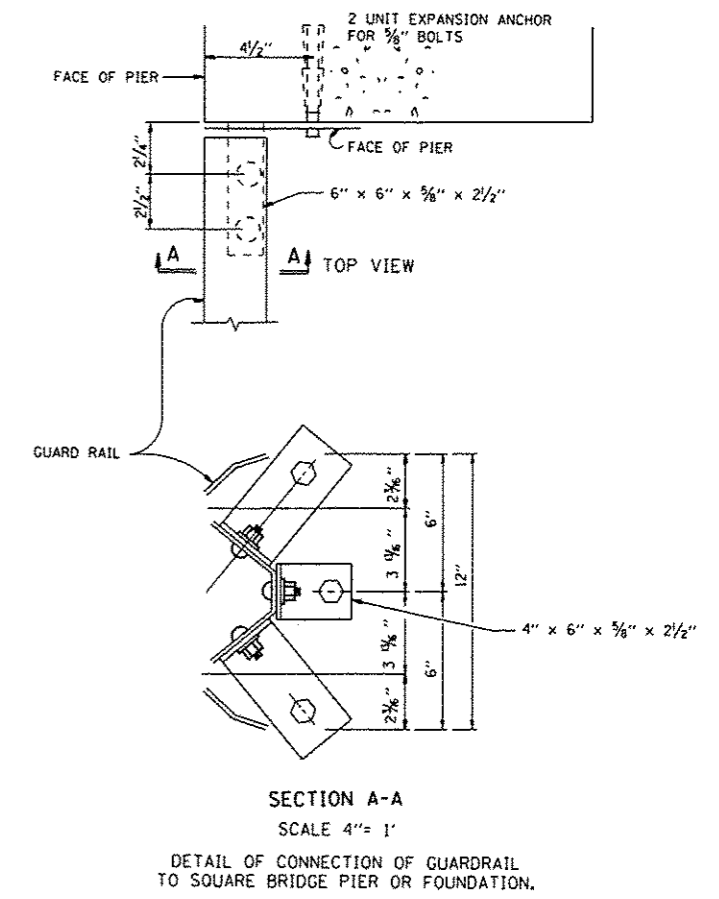
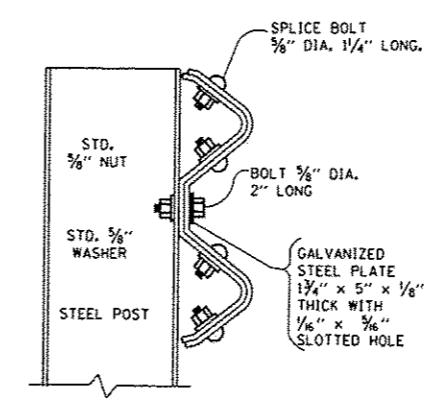
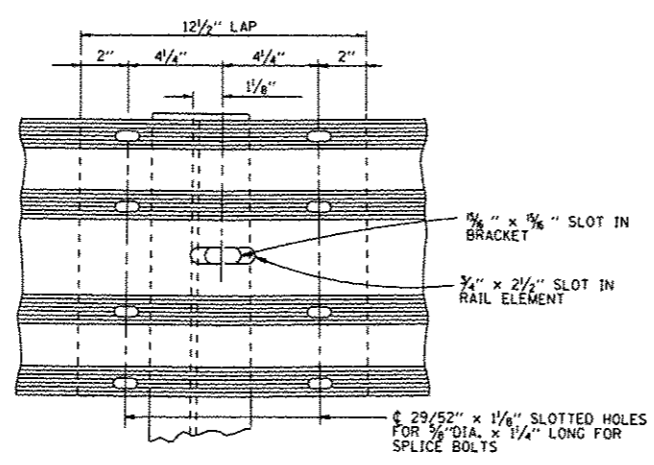
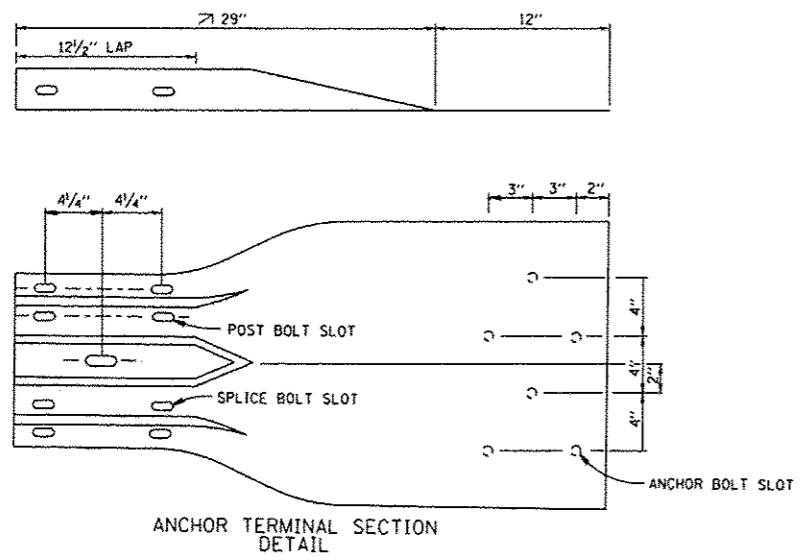
STATE OF ILLINOIS  
DEPARTMENT OF TRANSPORTATION

TYPICAL DETAIL FOR CENTER LONGITUDINAL JOINT  
GUARDRAIL JOINT

SCALE: NONE SHEET NO. 1 OF 1 SHEETS STA. TO STA.

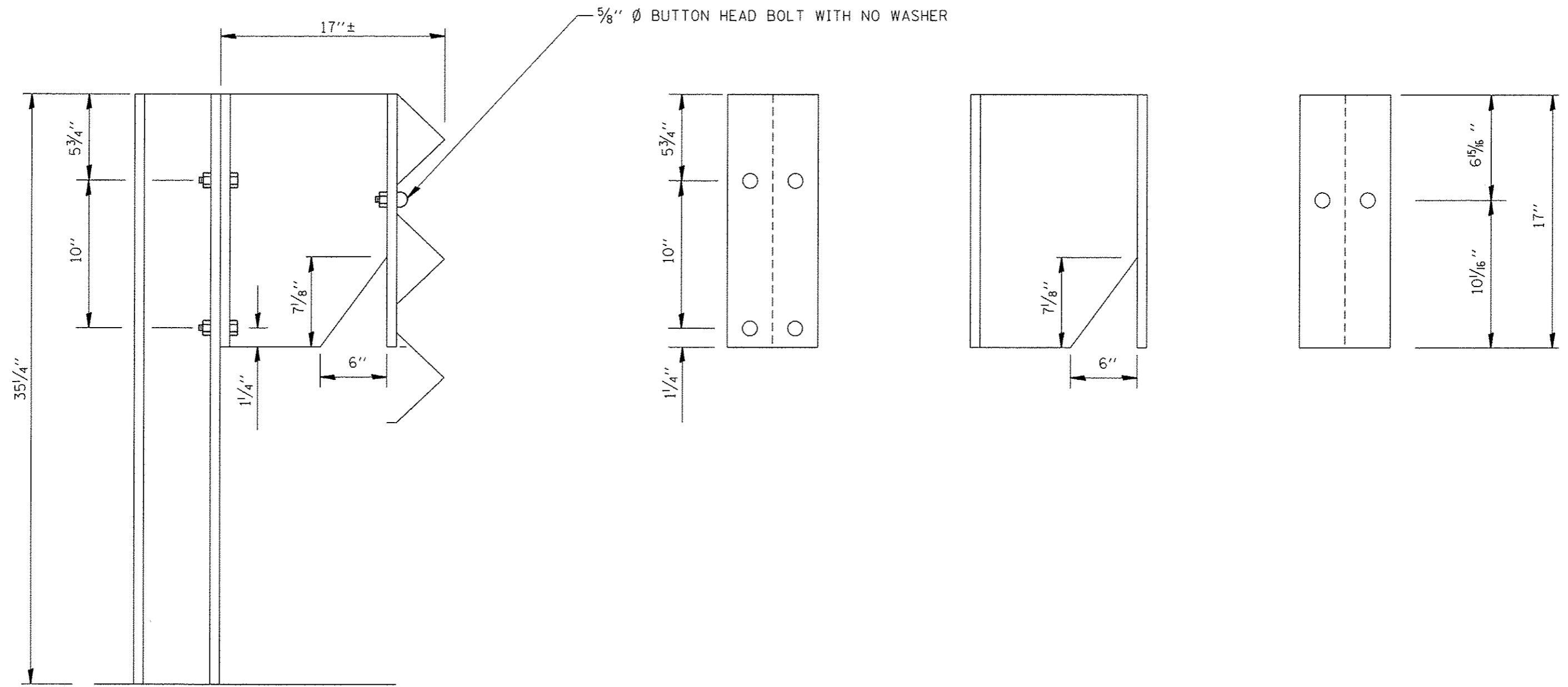
F.A. RTE.	SECTION	COUNTY	TOTAL SHEETS	SHEET NO.
VAR.	2016-046CRR	VARIOUS	29	17
BM-05		CONTRACT NO. 62D27		
FED. ROAD DIST. NO. 1 ILLINOIS FED. AID PROJECT				





THIS SHEET IS FOR INFORMATION ONLY

FILE NAME = p:\11884EBID\INTEG.Illinois.gov\PI\DOT\Documents\DOT Offices\District 1\Projects\0138\Browns\Design\08415-shr-plan.dgn	USER NAME = pyzenovskirb	DESIGNED -	REVISED - R. RITCHIE 05-02-00	<b>STATE OF ILLINOIS DEPARTMENT OF TRANSPORTATION</b>	<b>DETAIL OF GUARDRAIL SUPPORT AND END ANCHORAGE</b>		F.A. RTE.	SECTION	COUNTY	TOTAL SHEETS	SHEET NO.		
PLOT SCALE = 100,0000 1' = 100'	CHECKED -	DATE - 10-31-88	REVISED -		SCALE: NONE	SHEET NO. 1 OF 1 SHEETS	STA.	TO STA.	VAR.	2016-046GRR	VARIOUS	29	19
PLOT DATE = 6/15/2016			REVISED -							BM-07			
										CONTRACT NO. 62D27			
							FED. ROAD DIST. NO. 1 ILLINOIS FED. AID PROJECT						



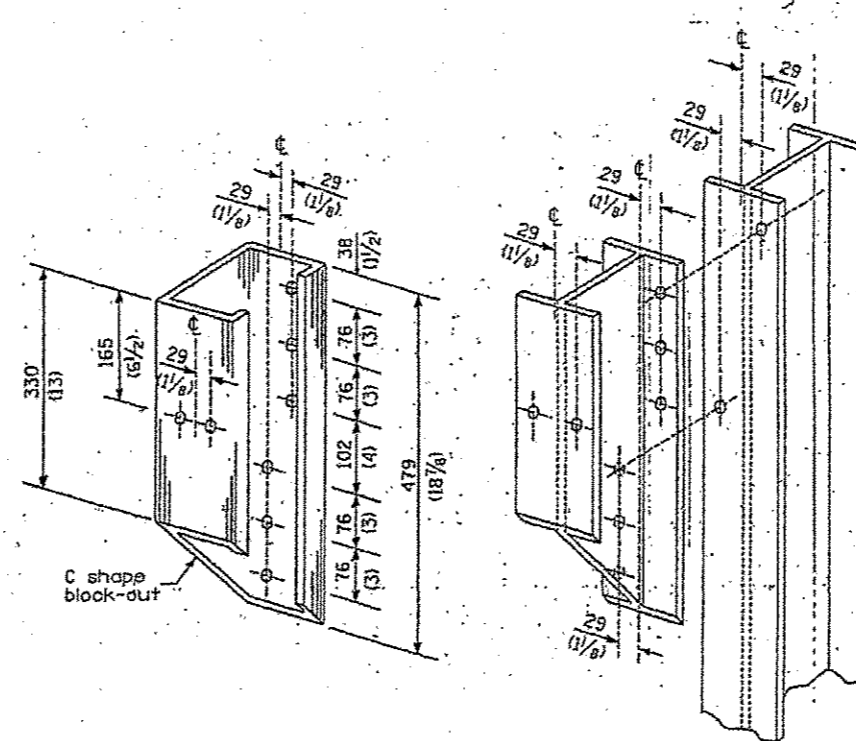
5/8" Ø BUTTON HEAD BOLT WITH NO WASHER

FILE NAME =	USER NAME = pyzanoski	DESIGNED -	REVISED -
pw\11.084EBIG\TEG\illinois.gov\PW1001\Documents\1007 Offices\District 1\Projects\0138415\0138415-shu-plan.dgn		CHECKED -	REVISED -
		DATE -	REVISED -

**STATE OF ILLINOIS  
DEPARTMENT OF TRANSPORTATION**

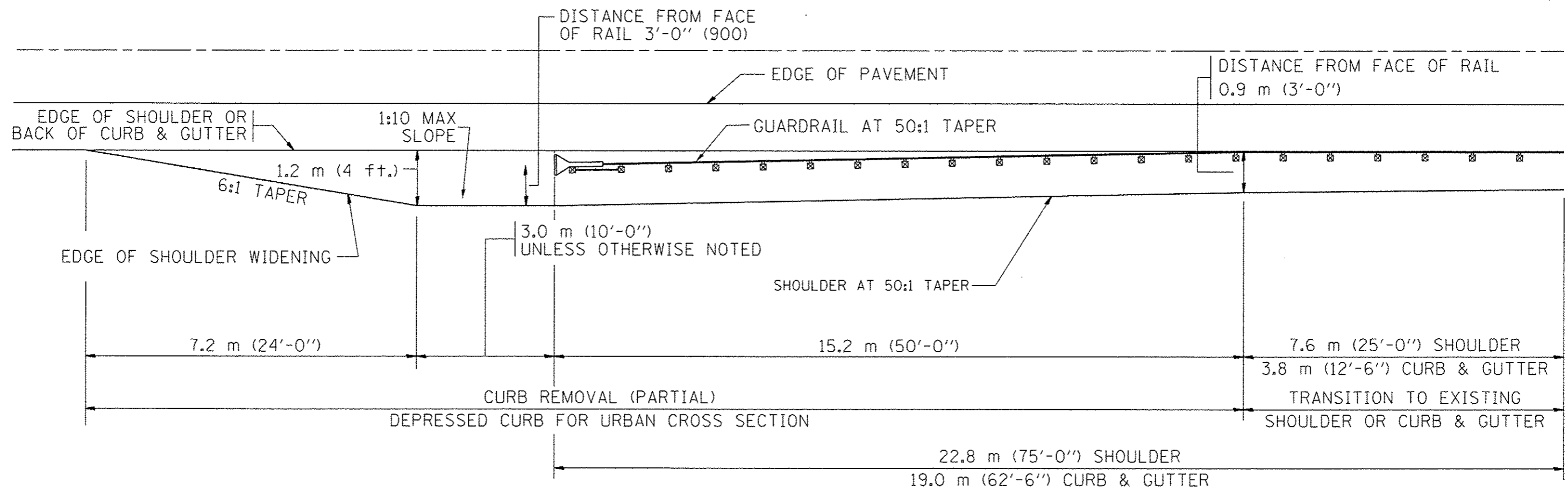
<b>DETAIL THREE BEAM GUARDRAIL WITH MODIFIED OFFSET BLOCK</b>			
SCALE:	SHEET NO.	OF SHEETS	STA. TO STA.

F.A. RTE.	SECTION	COUNTY	TOTAL SHEETS	SHEET NO.
VAR.	2016-046RR	VARIOUS	29	20
FED. ROAD DIST. NO. ILLINOIS FED. AID PROJECT			CONTRACT NO. 62027	



STEEL BLOCK-OUT AND  
STEEL POST DETAILS

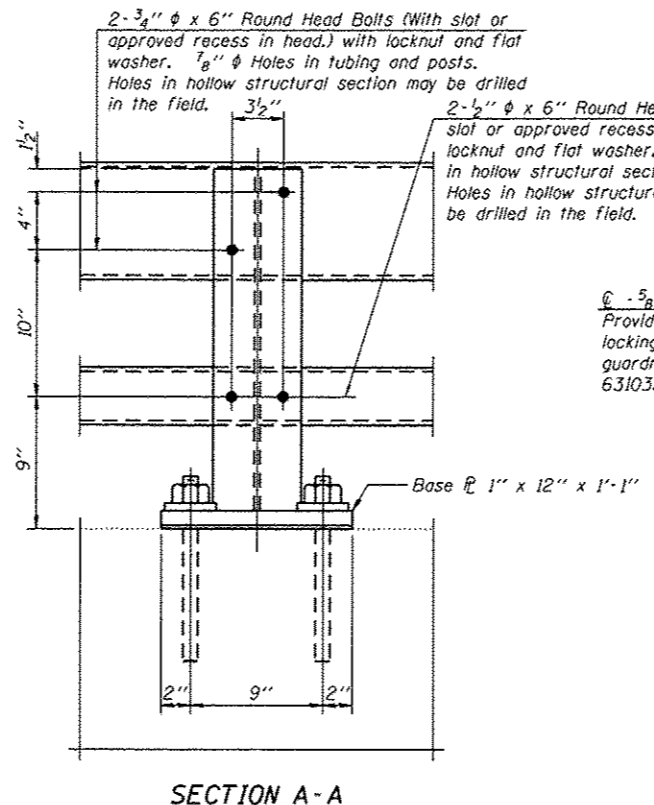
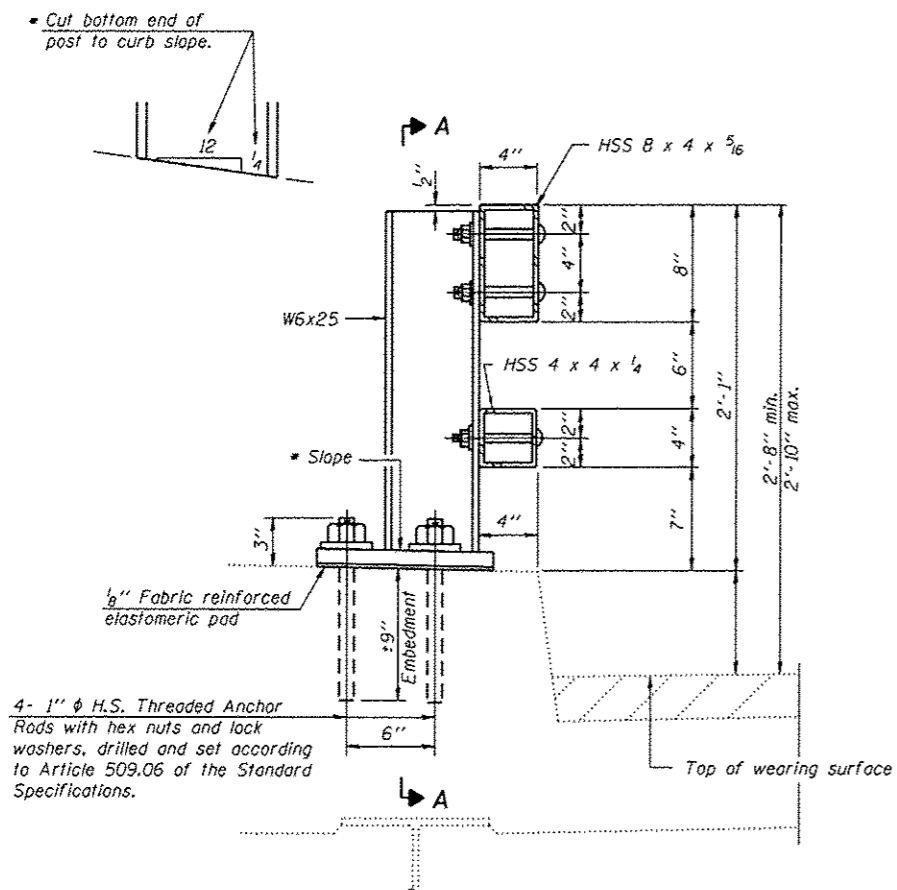
FILE NAME *	USER NAME *	DESIGNED -	REVISED -	<b>STATE OF ILLINOIS DEPARTMENT OF TRANSPORTATION</b>	<b>STEEL PLATE BEAM GUARDRAIL STEEL BLOCK-OUT DETAIL</b>		F.A. RTE.	SECTION	COUNTY	TOTAL SHEETS	SHEET NO.
pw\N\084EBID\INTEG\Illinois.gov\PI\DOT\Documents\DOT Offices\District 1\Projects\01384\Drawings\Design\0138415-shr-plan.dgn	pyrzanowski	CHECKED -	REVISED -				VAR.	2016-046GRR	VARIOUS	29	21
PLOT SCALE * 100.0000 / in.		DATE -	REVISED -		SCALE: SHEET OF SHEETS STA. TO STA.		CONTRACT NO. 62027				
PLOT DATE * 6/15/2016					ILLINOIS FED. AID PROJECT						



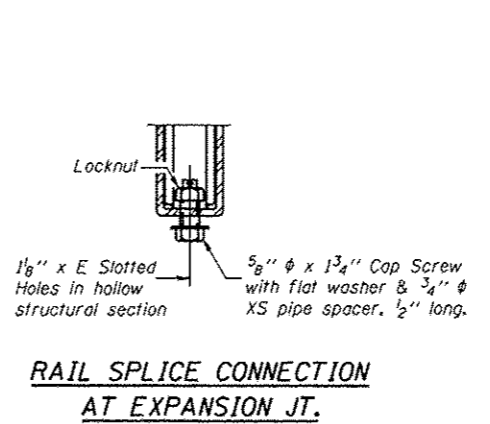
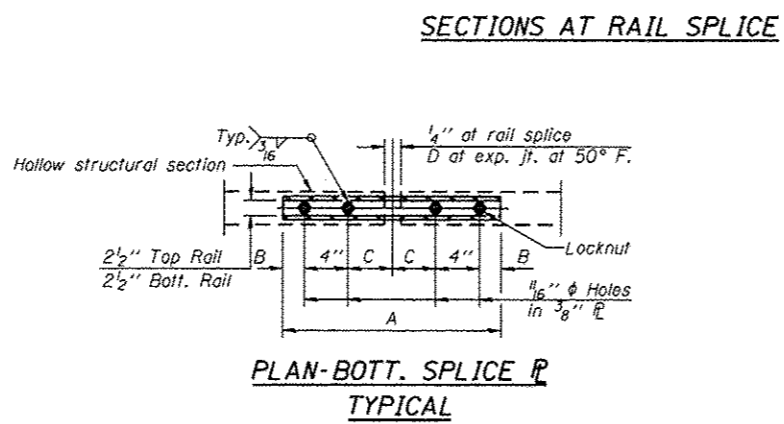
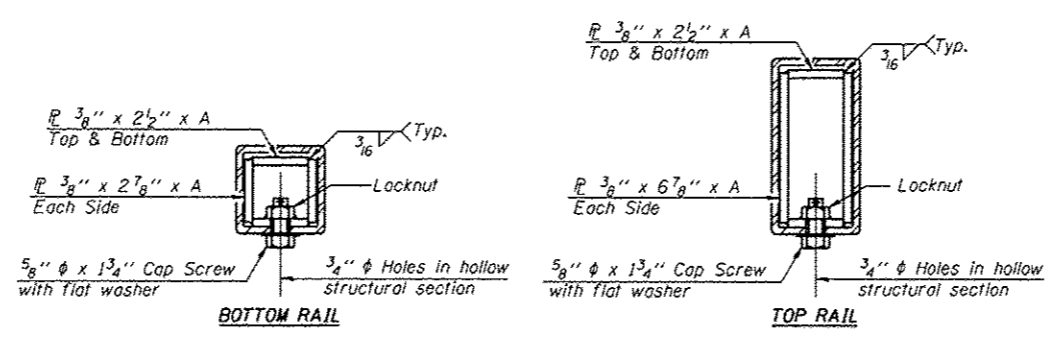
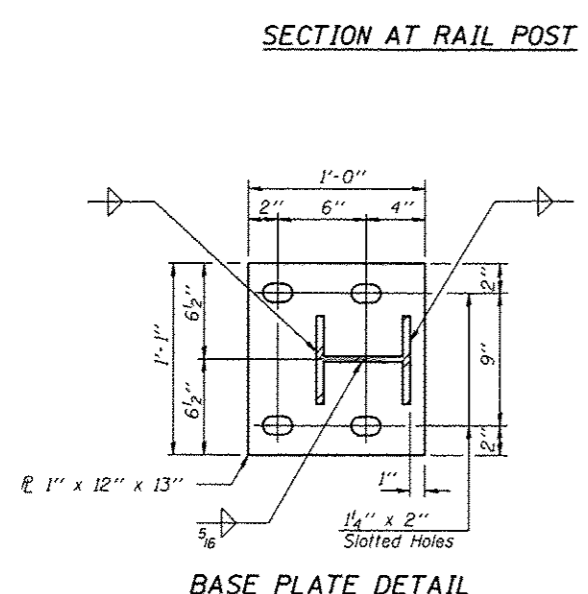
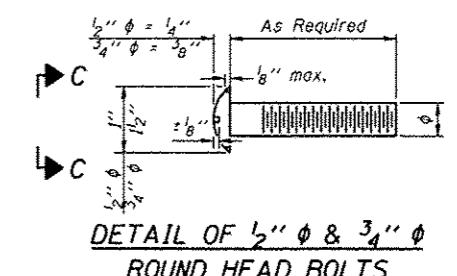
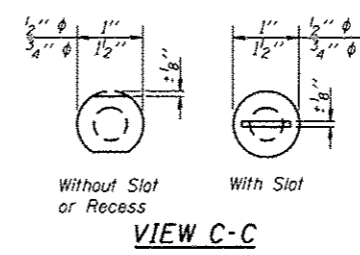
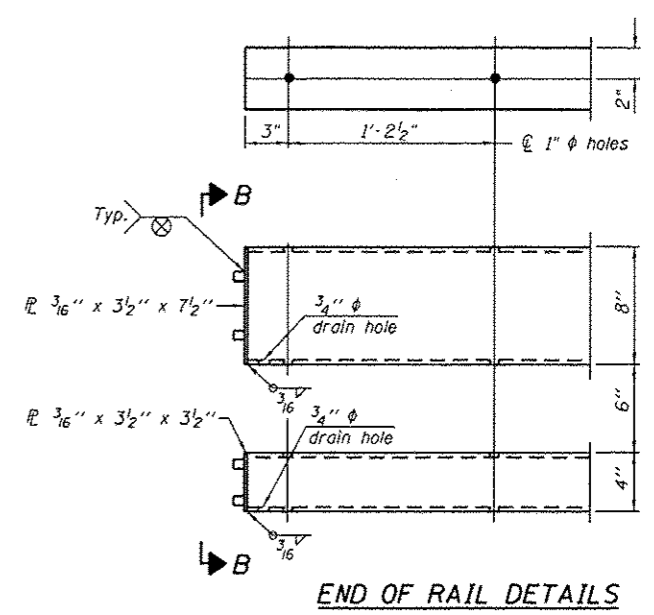
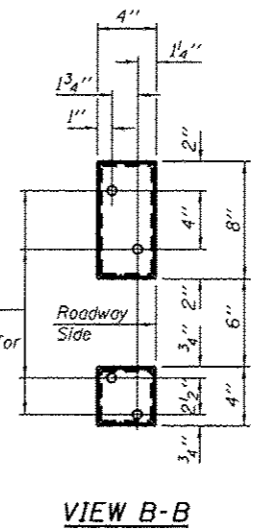
NOTES: THE CONTRACTOR SHALL VERIFY THE TYPE/HEIGHT OF GUARDRAIL IN-PLACE BEFORE ORDERING THE NEW TERMINAL SECTION. COST INCLUDED WITH THE COST OF THE TERMINAL. THE TERMINAL SECTION HEIGHT TO BE PLACED MUST MATCH THE HEIGHT OF THE IN-PLACE GUARDRAIL.

SHOULDER WIDENING SHALL BE IN ACCORDANCE WITH STATE STANDARD 630301

FILE NAME =	USER NAME = pyzzenovskirb	DESIGNED -	REVISED -	<b>STATE OF ILLINOIS DEPARTMENT OF TRANSPORTATION</b>	<b>CURB REMOVAL (PARTIAL) FOR TRAFFIC BARRIER TERMINAL, TYPE 1 SPECIAL</b>	F.A. RTE.	SECTION	COUNTY	TOTAL SHEETS	SHEET NO.
p:\11\084EBIDINTEG\illinois.gov\PI\007\Documents\1007 Offices\District 1\Projects\01384\01384\0138415-shr-pln.dgn	DRAWN BY	CHECKED -	REVISED -			VAR.	2016-046GRR	VARIOUS	29	22
PLOT SCALE = 100.0000' / in.	DATE -	REVISED -	REVISED -			CONTRACT NO. 62D27		ILLINOIS FED. AID PROJECT		
Default	PLOT DATE = 6/15/2016	DATE -	REVISED -			SCALE:	SHEET	OF	SHEETS	STA.



$\phi$  - 5/8" reduced base welded studs. Provide 4 - 5/8" washers and self-locking nuts or nuts and jam nuts for guardrail connection shown on Std. 631032.



Notes:  
 All field drilled holes shall be coated with an approved zinc rich paint before erection.  
 Posts shall not be located closer than 1'-3" to an existing bridge expansion joint or end of bridge.  
 Steel Bridge Rail expansion joint shall be provided between any two (2) posts which span a bridge expansion joint. Bolts located at expansion joint shall be provided with locknuts and shall be tightened only to a point that will allow railing movement.  
 Provide one 1/8" and two 1/16" steel shims for 25% of the posts. Shims shall be similar to base plates in size and holes.  
 All steel rail elements shall be galvanized according to Article 509.05 of the Standard Specifications.

SPLICE DIMENSIONS

T	D	A	B	C	E
≤ 4"	2 1/2"	1'-8"	2"	4"	2 1/2"
> 4" ≤ 6 1/2"	3 3/4"	2'-0"	2 1/2"	5 1/2"	3 1/2"
> 6 1/2" ≤ 9"	5"	2'-4"	3 1/2"	6 1/2"	9"
> 9" ≤ 13"	7"	2'-10"	4 1/2"	8 1/2"	11"
Rail Splice	1/4"	1'-8"	2"	4"	—

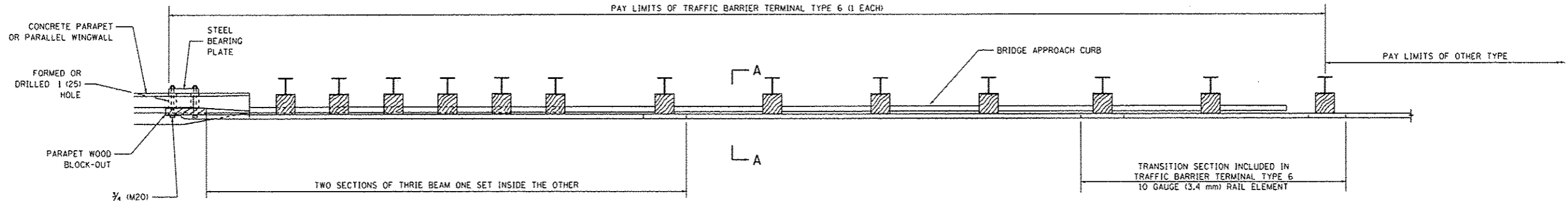
T = Total movement at expansion joint as shown on the design plans.

R-31 7-1-10 (6'-3" Maximum Post Spacing)

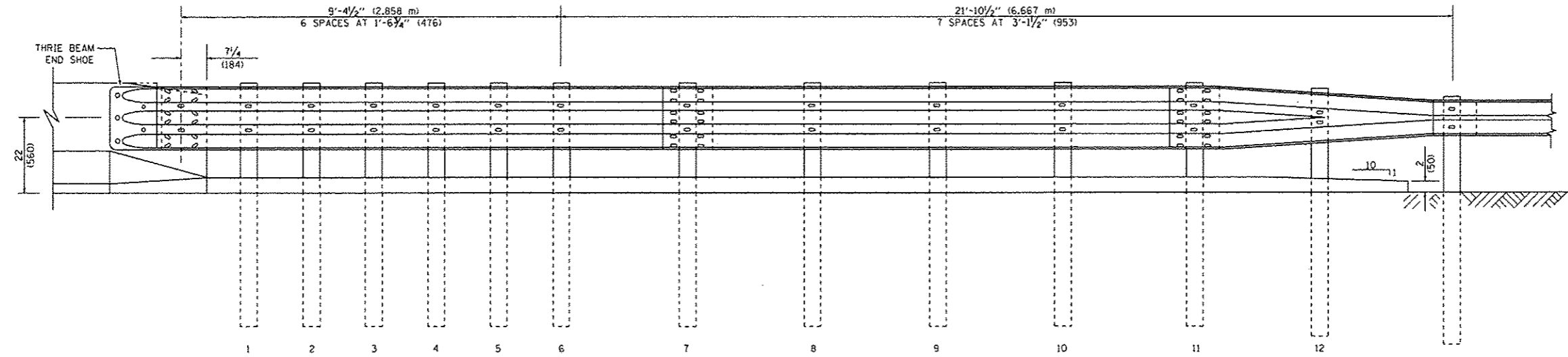
STEEL RAILING, TYPE 2399  
 STRUCTURE NO.

PARAPET OR WINGWALL

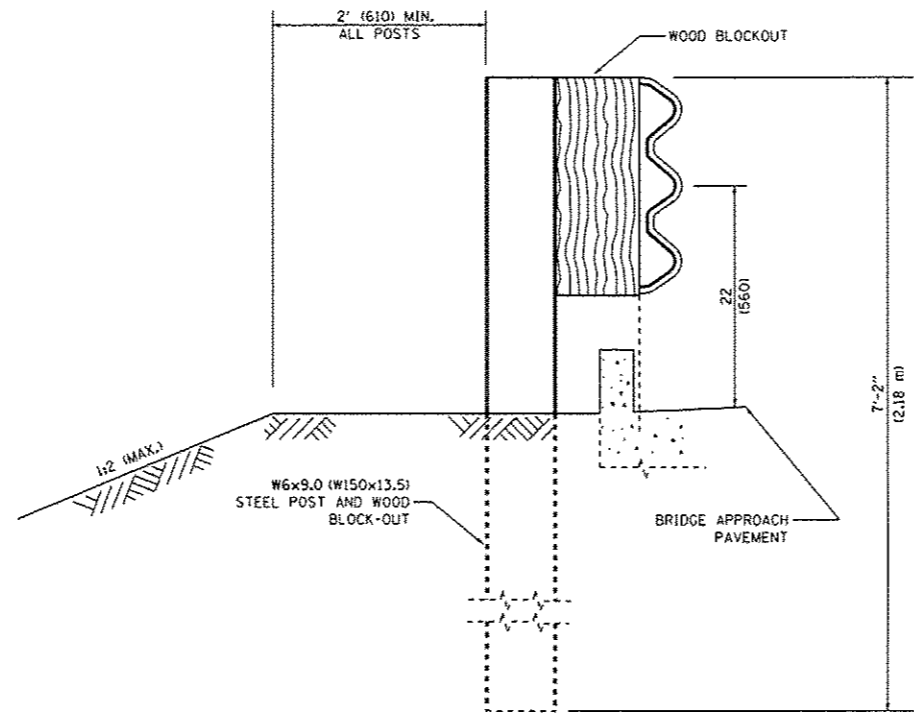
PAY LIMITS OF TRAFFIC BARRIER TERMINAL TYPE 6 (1 EACH)



PLAN



ELEVATION



SECTION A-A

GENERAL NOTES

- TO BE USED WHEN CONNECTING TO EXISTING GUARD RAILING PRIOR TO THE MIDWEST GUARDRAIL SYSTEM.
- SEE STANDARD 630001 FOR DETAILS OF GUARDRAIL NOT SHOWN.
- THRIE BEAM RAIL SHALL BE BOLTED TO BLOCK-OUT AT ALL POSTS.
- SEE STANDARD 420401 FOR DETAILS OF BRIDGE APPROACH PAVEMENT.
- ALL SLOPE RATIOS ARE EXPRESSED AS UNITS OF VERTICAL DISPLACEMENT TO UNITS OF HORIZONTAL DISPLACEMENT (V:H).
- ALL DIMENSIONS ARE IN INCHES (MILLIMETERS) UNLESS OTHERWISE SHOWN.

FILE NAME =	USER NAME = pyzono-wk/rb	DESIGNED -	REVISED - STATE STANDARD:	<b>STATE OF ILLINOIS DEPARTMENT OF TRANSPORTATION</b>	<b>TYPE 6 TERMINAL FOR USE WITH 21" HIGH SPBGR</b>			F.A. RTE.	SECTION	COUNTY	TOTAL SHEETS	SHEET NO.	
pw\11084EBIDINTEG.illinois.gov\PWIDOT\Documents\DOT Offices\District 1\Projects\013845\013845-shr-plandgn	ORW\Date\Design\0138415-shr-plandgn	631031-05 - 02/19/2008	REVISED -		SCALE: NONE	SHEET NO. 1 OF 3 SHEETS	STA.	TO STA.	VAR.	2016-0460RR	VARIOUS	29	24
PLOT SCALE = 100.0000 / / in.	CHECKED -	REVISED -	DATE -					<b>BM 22</b>		CONTRACT NO. 62027			
PLOT DATE = 6/15/2016	DATE -	REVISED -					FED. ROAD DIST. NO. 1 ILLINOIS FED. AID PROJECT						



OTHER CONCRETE STRUCTURE

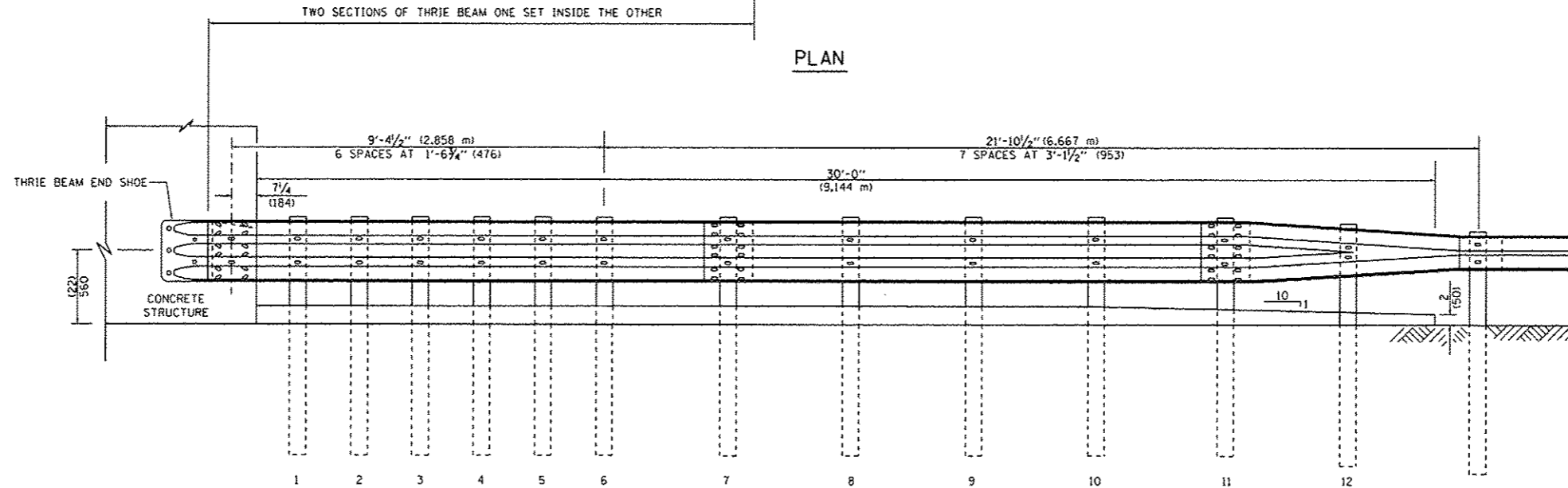
5 EPOXY GROUTED 3/4 (M20) ANCHOR BOLTS WITH STANDARD WASHERS. AFTER TIGHTENING, CUT THE ANCHOR BOLTS FLUSH WITH NUTS, AND DAMAGE THE NUT TO PREVENT IT FROM LOOSENING.

PAY LIMITS OF TRAFFIC BARRIER TERMINAL TYPE 6 (1 EACH)

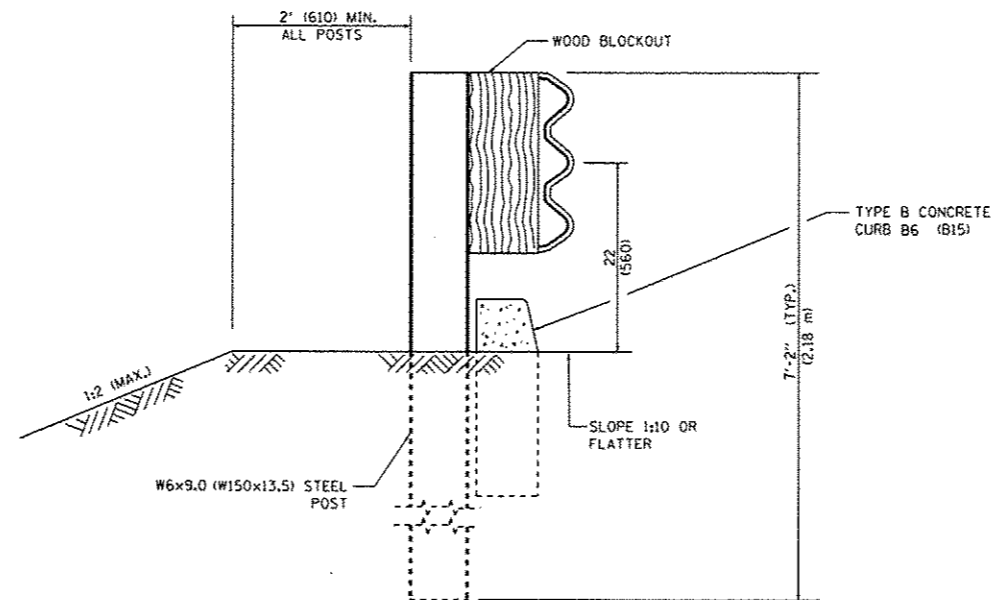
TYPE B CONCRETE CURB

PAY LIMITS OF OTHER TYPE

PLAN



ELEVATION



SECTION B-B

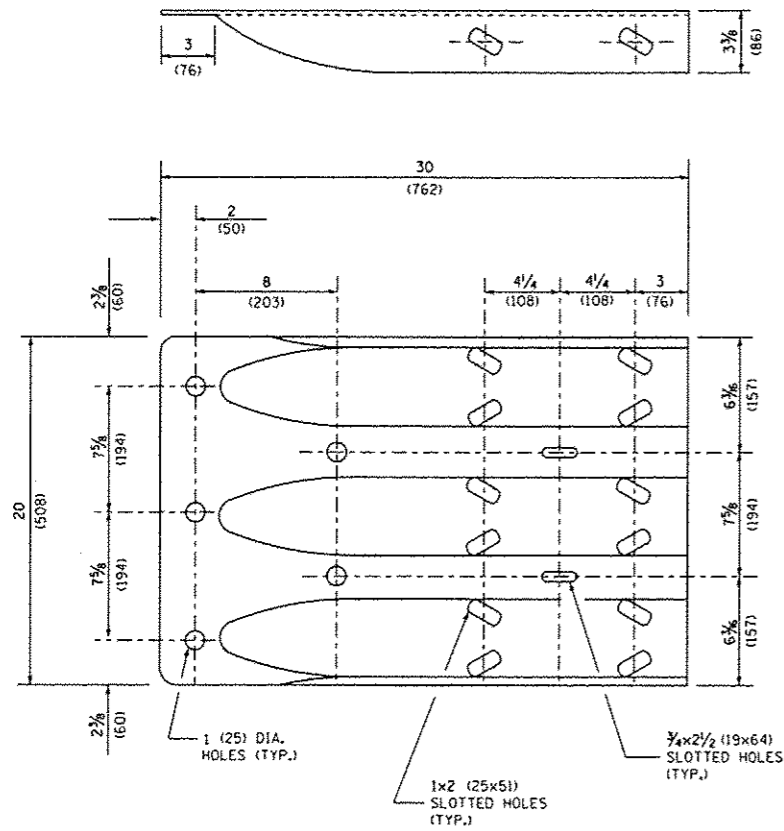
FILE NAME :	USER NAME : pyzhenovskrb	DESIGNED -	REVISED - STATE STANDARD:
p:\11\084EBID\INTEC\Illinois.gov\PI\001\Documents\1001 Offices\District 1\Projects\0138415\0138415-ehc-plan.dgn		6/15/2016	6/31/03-05 - 02/19/2008
PLOT SCALE : 100,0000 1/1 in.	CHECKED -	DATE -	REVISED -
PLOT DATE : 6/15/2016			

STATE OF ILLINOIS  
DEPARTMENT OF TRANSPORTATION

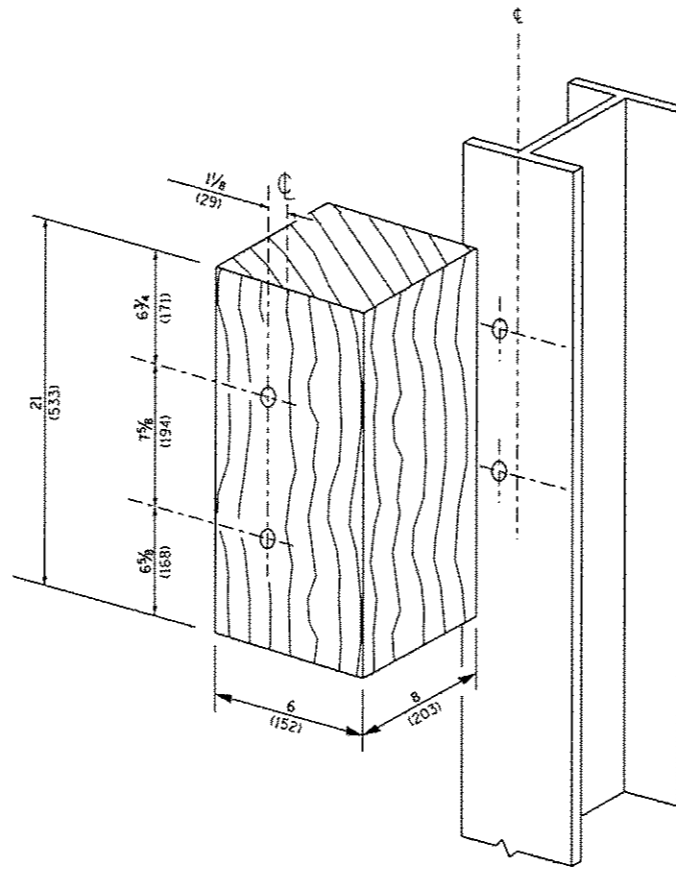
TYPE 6 TERMINAL  
FOR USE WITH 21" HIGH SPBGR

SCALE: NONE SHEET NO. 2 OF 3 SHEETS STA. TO STA.

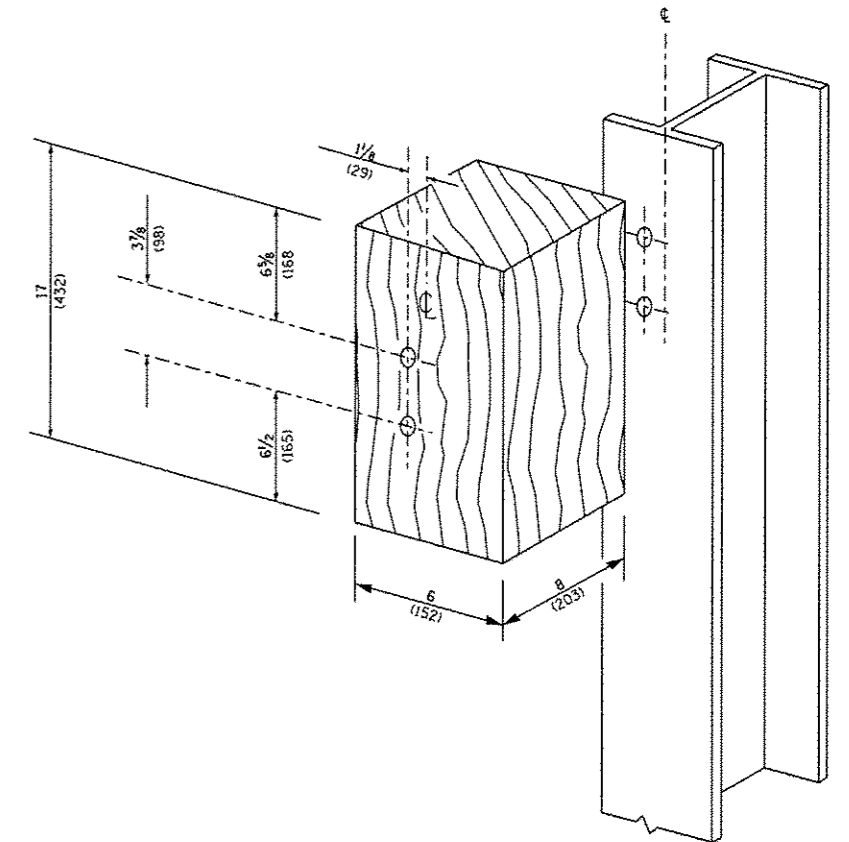
F.A. RTE.	SECTION	COUNTY	TOTAL SHEETS	SHEET NO.
VAR.	2016-046GRR	VARIOUS	29	25
BM 22		CONTRACT NO. 62D27		
FED. ROAD DIST. NO. 1 ILLINOIS FED. AID PROJECT				



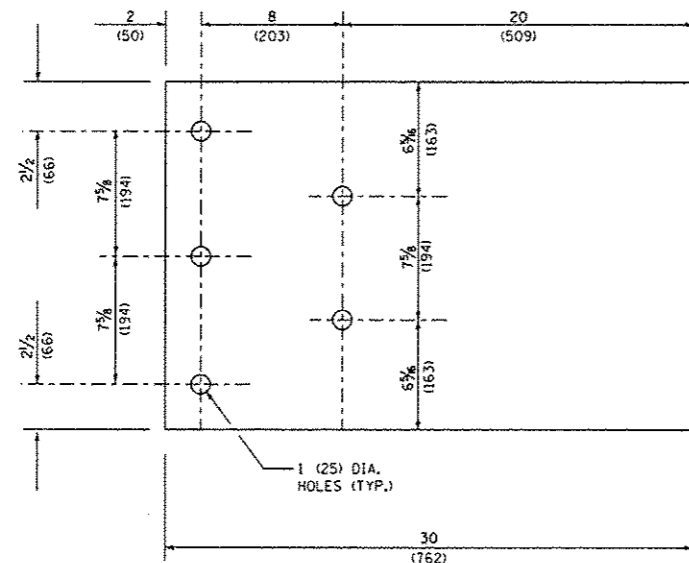
THRIE BEAM END SHOE DETAIL



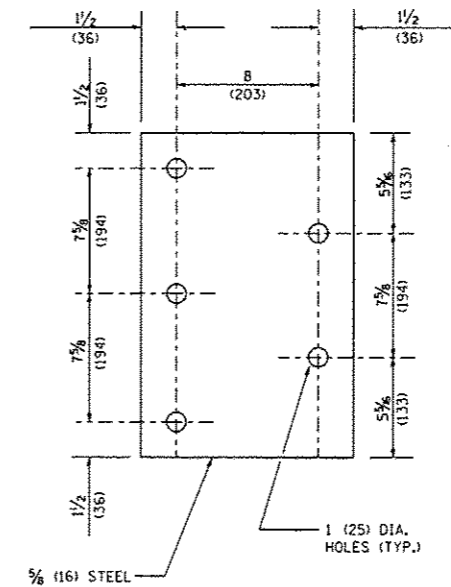
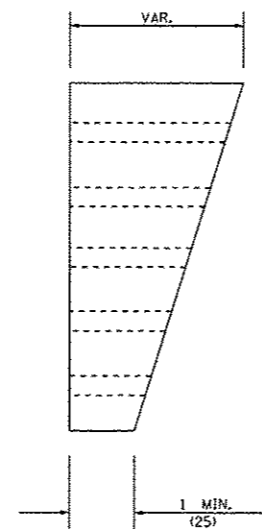
POSTS 1-11 WOOD BLOCKOUT DETAIL



POST 12 WOOD BLOCKOUT DETAIL



PARAPET WOOD BLOCK-OUT DETAIL



PARAPET STEEL BEARING PLATE DETAIL

(5 EACH INDIVIDUAL 5x5x5/8 (125x125x16) STEEL PLATES WITH CENTERED 1 (25) HOLES MAY BE SUBSTITUTED FOR THE PLATE SHOWN.)

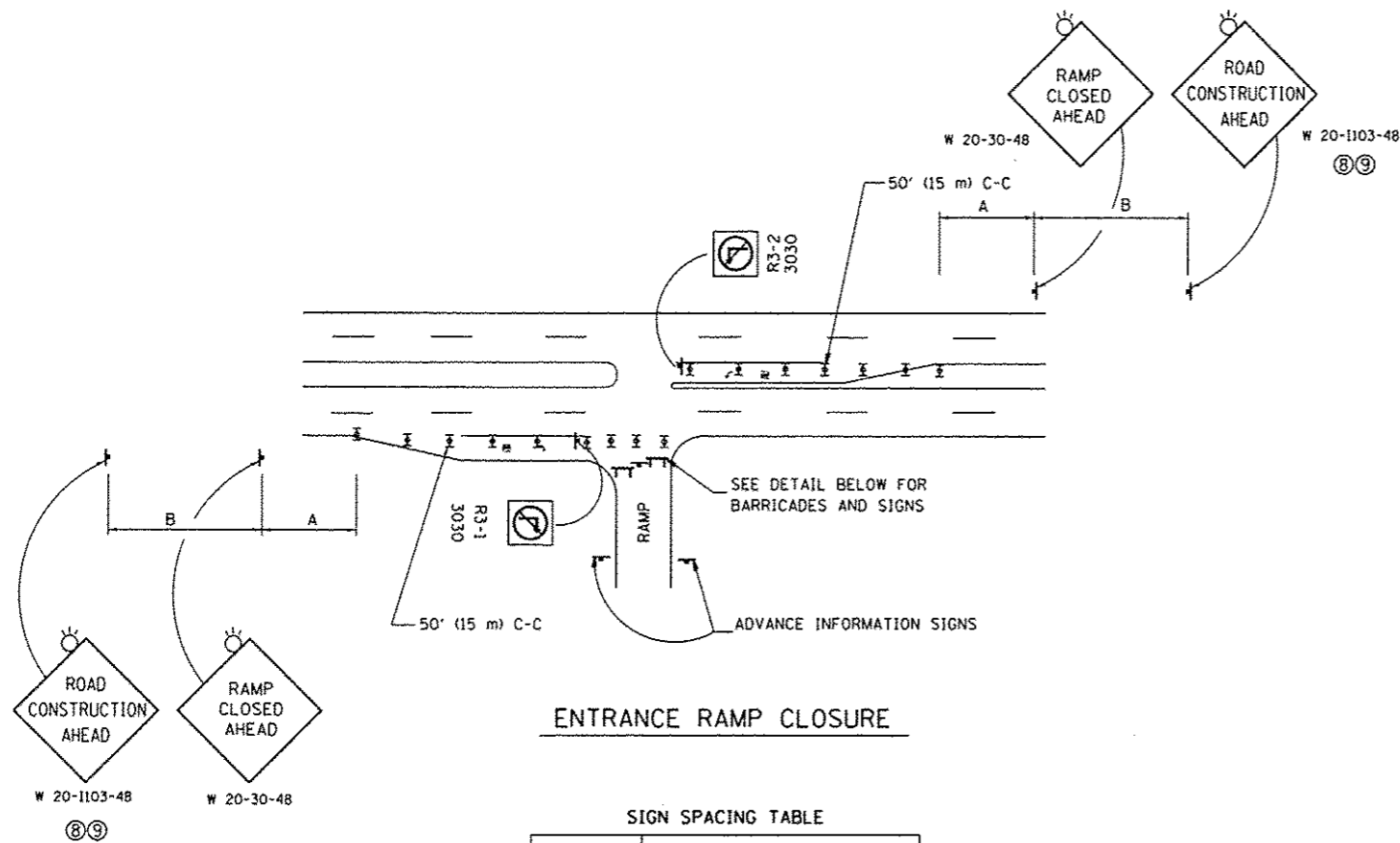
FILE NAME *	USER NAME = pyzronovskrb	DESIGNED -	REVISED - STATE STANDARD:
pwt\11084EBIDINTEC\Illinois.gov\PHIDOT\Documents\DOT Offices\District 1\Projects\1384\Design\0138415-ht-plen.dgn		6/15/2016	631031-05 - 02/19/2008
PLOT SCALE = 100.0000' / in.	CHECKED -	DATE -	REVISED -
PLOT DATE = 6/15/2016			

STATE OF ILLINOIS  
DEPARTMENT OF TRANSPORTATION

TYPE 6 TERMINAL  
FOR USE WITH 21" HIGH SPBGR

SCALE: NONE SHEET NO. 3 OF 3 SHEETS STA. TO STA.

F.A. RTE.	SECTION	COUNTY	TOTAL SHEETS	SHEET NO.
VAR.	2016-046GRR	VARIOUS	29	26
BM 22		CONTRACT NO. 62D27		
FED. ROAD DIST. NO. 1 ILLINOIS FED. AID PROJECT				

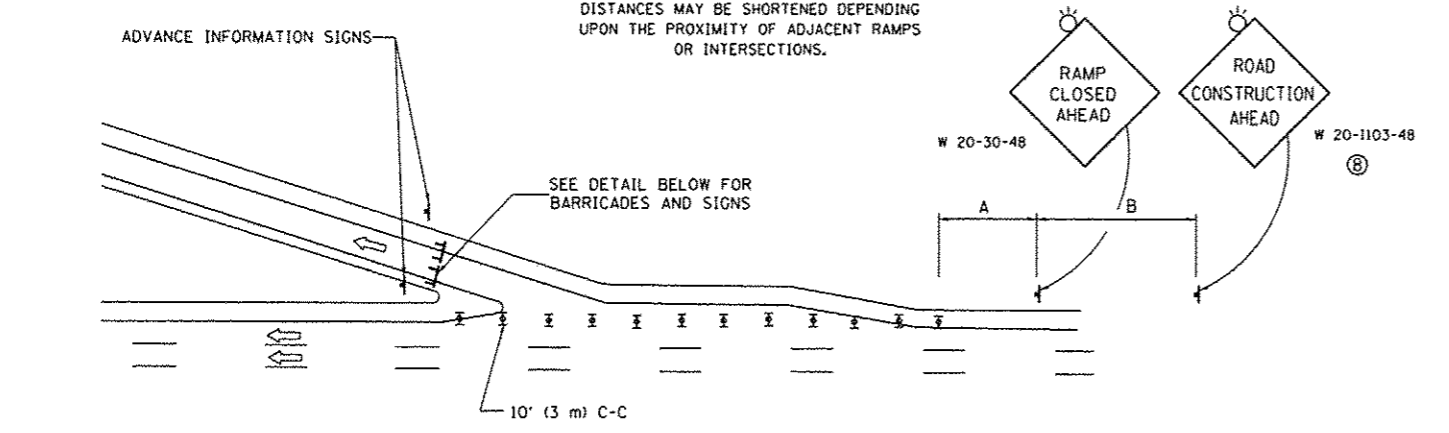


**ENTRANCE RAMP CLOSURE**

**SIGN SPACING TABLE**

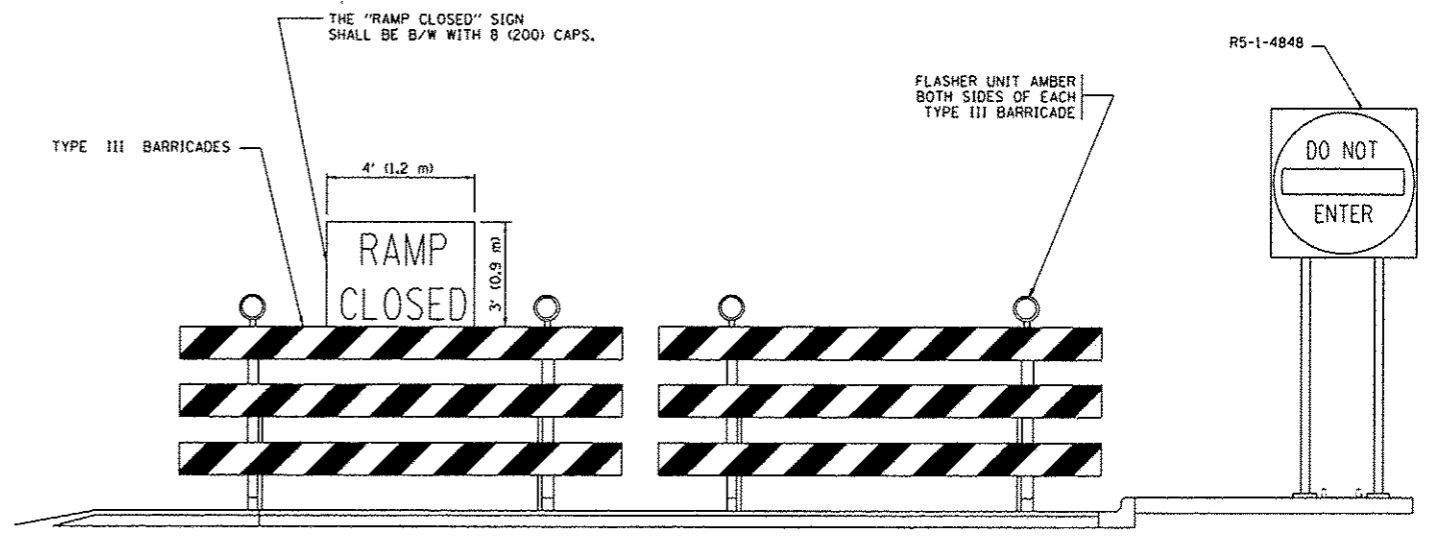
FACILITY	DISTANCE BETWEEN SIGNS	
	A	B
EXPRESSWAY >24 HOURS	1000' (300 m)	1500' (450 m)
EXPRESSWAY ≤24 HOURS	500' (150 m)	500' (150 m)
ARTERIAL 55 MPH	500' (150 m)	500' (150 m)
ARTERIAL 50-45 MPH	350' (100 m)	350' (100 m)
ARTERIAL <45 MPH	200' (60 m)	200' (60 m)

DISTANCES MAY BE SHORTENED DEPENDING UPON THE PROXIMITY OF ADJACENT RAMPS OR INTERSECTIONS.

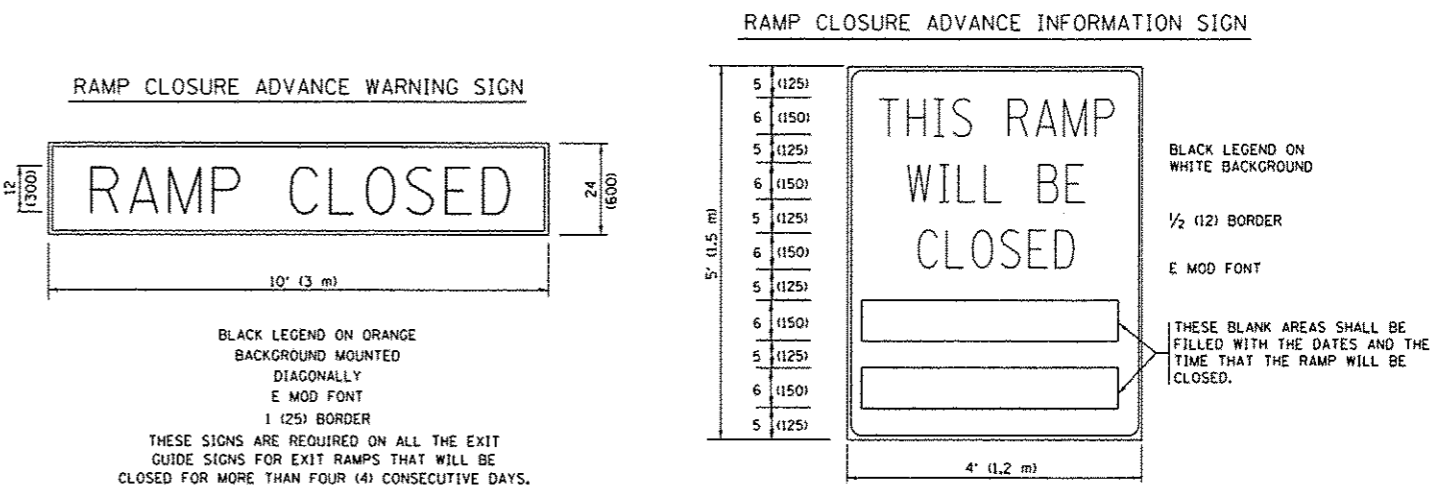


**EXIT RAMP CLOSURE**

- SYMBOLS**
- ☒ TYPE II BARRICADE OR DRUM WITH STEADY BURN MONO-DIRECTIONAL LIGHT
  - ☒ TYPE III BARRICADE WITH 2 FLASHING LIGHTS



**DETAIL FOR REQUIRED BARRICADES & SIGNS**



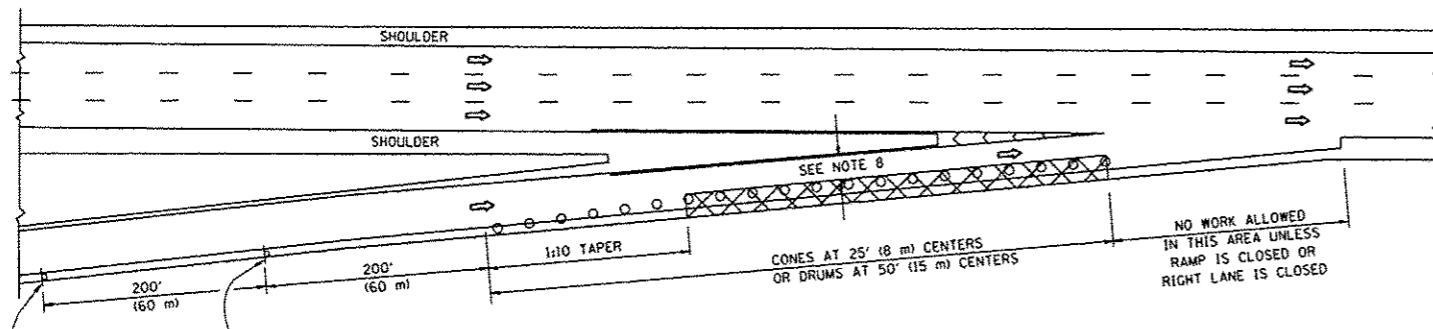
THESE SIGNS ARE REQUIRED ON BOTH SIDES OF THE RAMP, MINIMUM OF 1 WEEK IN ADVANCE OF THE CLOSURE. THESE SIGNS SHALL BE FABRICATED AND PAID FOR ACCORDING TO THE TEMPORARY INFORMATION SIGNING SPECIAL PROVISION

**GENERAL NOTES:**

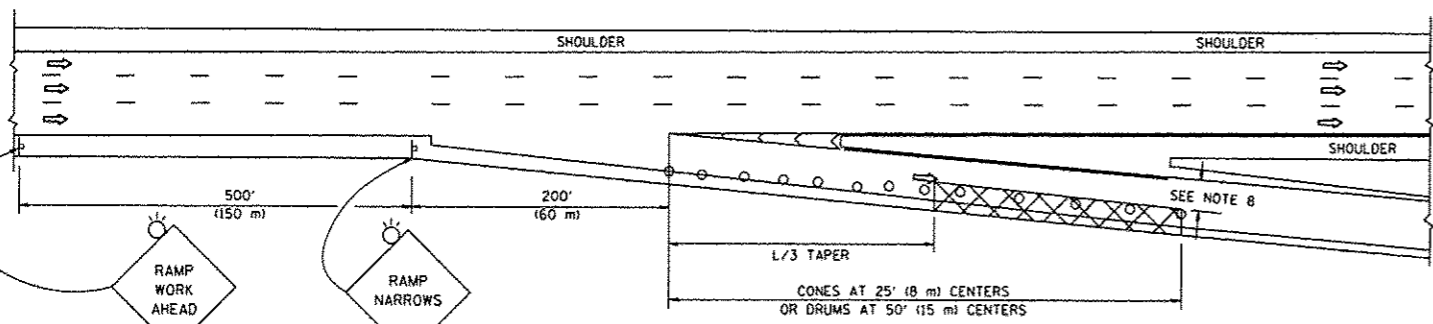
- CONES MAY BE SUBSTITUTED FOR DRUMS OR TYPE II BARRICADES DURING DAY OPERATIONS. CONES SHALL BE A MINIMUM OF 28 (700) HIGH.
- STEADY BURN LIGHTS WILL NOT BE REQUIRED FOR DAY OPERATIONS.
- A FLAGGER SHALL BE POSITIONED AT EACH CLOSED RAMP THAT IS OPEN TO CONSTRUCTION VEHICLES, PRECEDED BY A W20-7 FLAGGER WARNING SIGN.
- ALL ROUTE MARKERS AND TRAILBLAZER ASSEMBLIES WHICH DIRECT MOTORISTS TO A CLOSED ENTRANCE RAMP SHALL BE COVERED WHEN THE RAMP IS CLOSED FOR MORE THAN FOUR (4) DAYS.
- THE SIGNING AND BARRICADING WHICH IS REQUIRED BY THIS DETAIL SHALL BE INCLUDED IN THE COST OF TRAFFIC CONTROL AND PROTECTION (EXPRESSWAYS).
- AUTHORIZATION FROM THE DISTRICT'S BUREAU OF TRAFFIC IS REQUIRED FOR ALL RAMP CLOSURES.
- THE RAMP CLOSURE ADVANCE INFORMATION SIGNS SHALL BE ERECTED IF THE CLOSURE TIME EXCEEDS TWENTY-FOUR (24) HOURS. ADDITIONAL ADVANCE WARNING SIGNS ON EXIT GUIDE SIGNING WILL BE REQUIRED FOR EXIT RAMP CLOSURES THAT EXCEED FOUR (4) DAYS IN LENGTH.
- ROAD CONSTRUCTION AHEAD SIGNS MAY BE OMITTED WHEN THIS DETAIL IS USED IN CONJUNCTION WITH OTHER TRAFFIC CONTROL THAT ALREADY INCLUDES A ROAD CONSTRUCTION AHEAD SIGN.
- ARTERIAL ROAD CONSTRUCTION AHEAD SIGNS SHALL BE INSTALLED ON THE LEFT SIDE OF TRAFFIC IF THE MEDIAN IS MORE THAN 10 FT WIDE.

ALL DIMENSIONS ARE IN INCHES (MILLIMETERS) UNLESS OTHERWISE SHOWN.

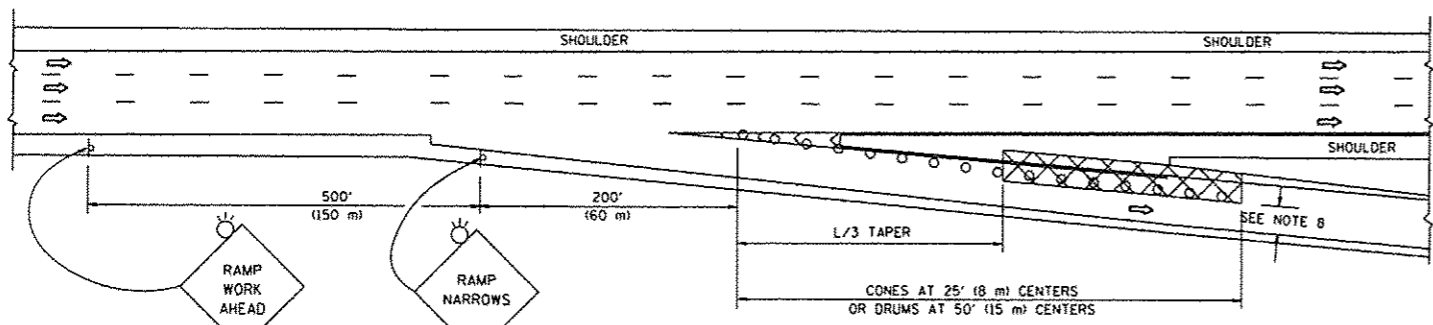
PARTIAL RAMP CLOSURE DETAILS



TYPICAL ENTRANCE RAMP



TYPICAL EXIT RAMP



TYPICAL EXIT RAMP

SYMBOLS

- ACTIVE WORK AREA
- SIGN ON PORTABLE OR PERMANENT SUPPORT
- FLAGGER WITH CONTROL SIGN
- TYPE II BARRICADE OR DRUM WITH STEADY BURN MONO-DIRECTIONAL LIGHT
- CONE, DRUM OR BARRICADE
- IMPACT ATTENUATOR OF TYPE AND TEST LEVEL SPECIFIED

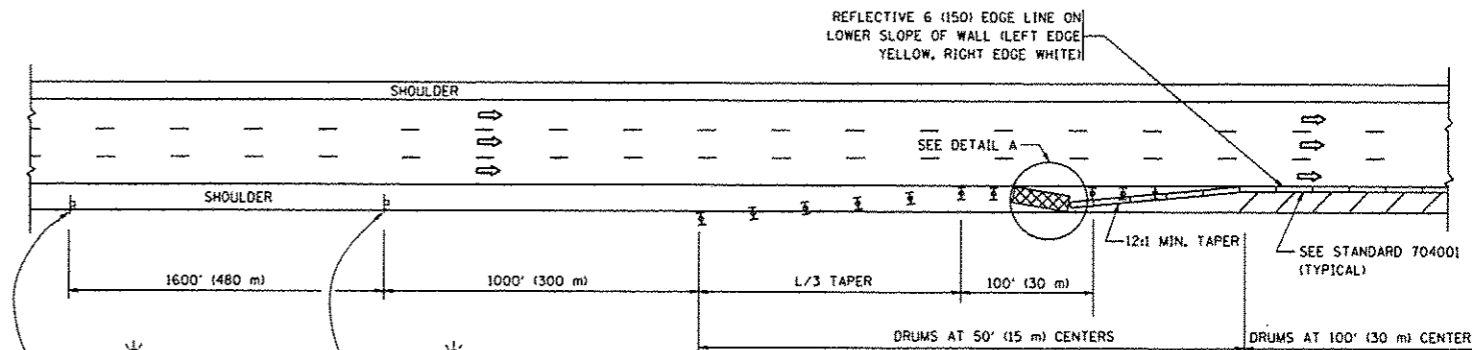
GENERAL NOTES

1. THE "L" DISTANCE EQUALS:
 

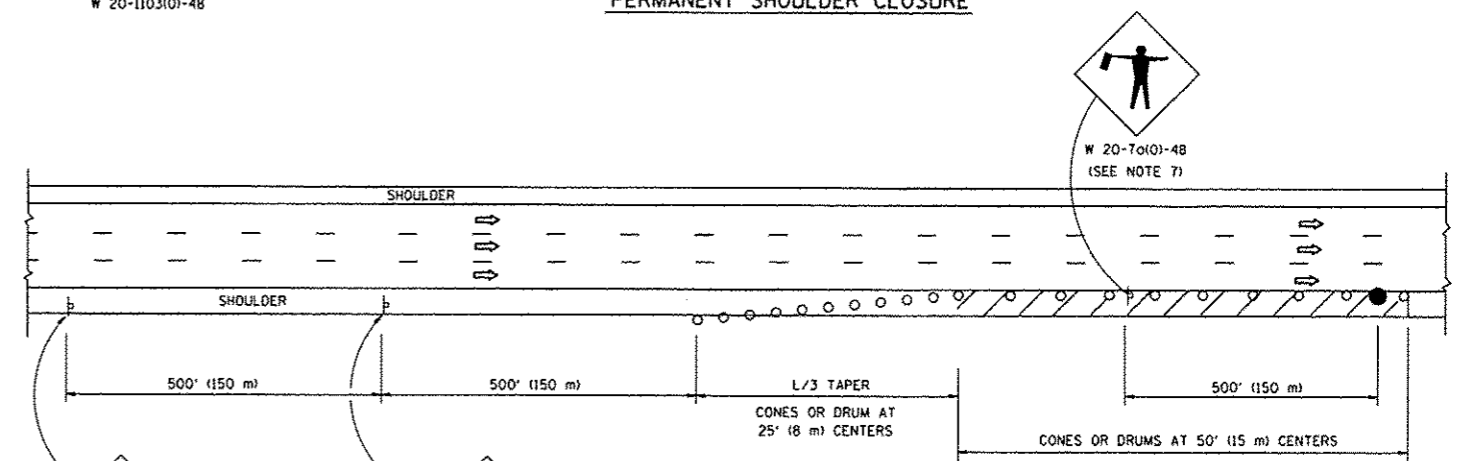
SPEED LIMIT	FORMULAS
45 mph (80 km/h) OR GREATER:	METRIC: $L = 0.65(W)(S)$ ENGLISH: $L = (W)(S)$

W = WIDTH OF OFFSET IN FEET (METERS)  
S = NORMAL POSTED SPEED MPH (KM/H)
2. PLASTIC DRUMS WITH HIGH PERFORMANCE REFLECTIVE SHEETING AND STEADY BURNING LIGHTS ARE REQUIRED FOR ALL NIGHTTIME CLOSURES.
3. ALL SIGNS SHALL BE POST MOUNTED IF THE CLOSURE TIME EXCEEDS FOUR DAYS.
4. FLASHING LIGHTS SHALL BE USED DURING THE HOURS OF DARKNESS AND SHALL BE INSTALLED ABOVE THE FIRST TWO SETS OF SIGNS.

SHOULDER CLOSURE DETAILS



PERMANENT SHOULDER CLOSURE



DAYTIME SHOULDER CLOSURE

ARRAY DESIGN PER MANUFACTURER TO BE NCHRP 350/MASH COMPLIANT.

DETAIL "A"  
IMPACT ATTENUATOR, TEMPORARY  
(SEE NOTE 5)

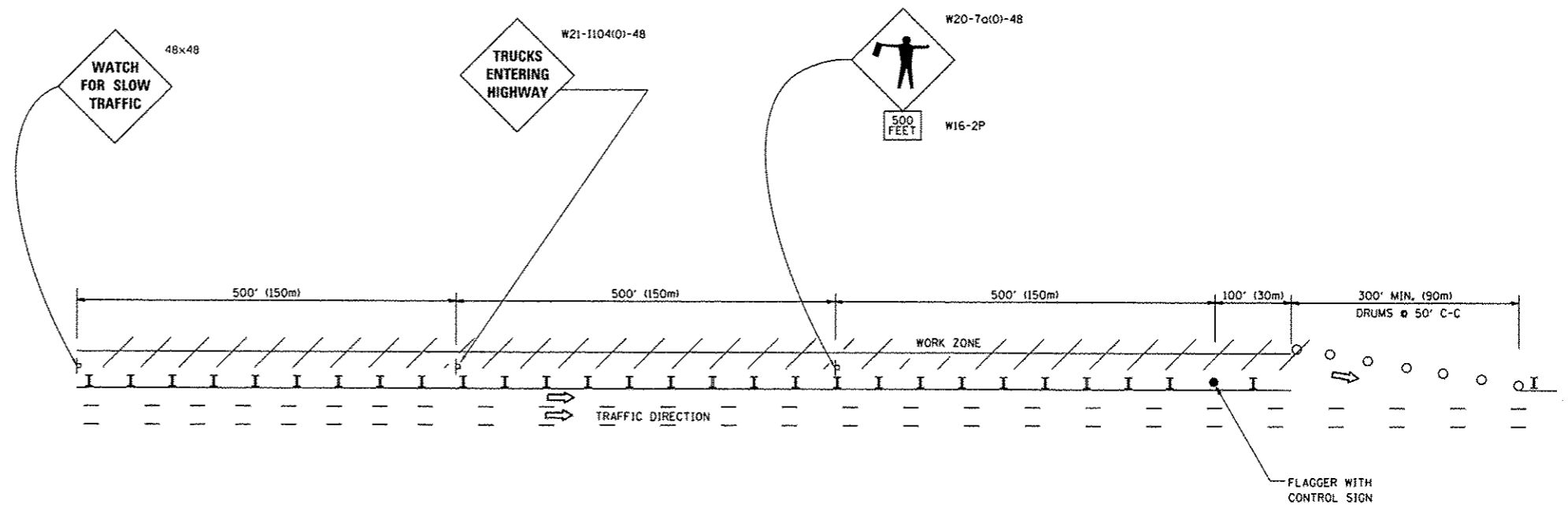
5. THE IMPACT ATTENUATOR, TEMPORARY IS NOT REQUIRED WHEN THE TEMPORARY CONCRETE BARRIER WALL IS PROTECTED BY OR IS TIED INTO THE EXISTING GUARDRAIL. IF OFFSET IS LESS THAN 5 FEET USE NARROW USE TYPE DEVICE TO MEET NCHRP350/MASH.
6. AUTHORIZATION FROM THE DISTRICT'S BUREAU OF TRAFFIC IS REQUIRED FOR ALL FREEWAY CLOSURES.
7. THE FLAGGER AND FLAGGER SIGN ARE REQUIRED AT THE ABOVE WORK SITES WHEN:
  - a. FOUR OR MORE WORK VEHICLES ENTER THE TRAFFIC LANES IN A ONE HOUR PERIOD.
  - b. THE WORK ACTIVITY REQUIRES FREQUENT ENCROACHMENT INTO THE LANE OPEN TO TRAFFIC. THE FLAGGER SHALL BE STATIONED APPROXIMATELY 100' (30 m) TO 200' (60 m) IN ADVANCE OF THE WORKERS.
8. 12' MIN. WIDTH TANGENT SECTION  
16' MIN. WIDTH CURVE SECTION.

ALL DIMENSIONS ARE IN INCHES (MILLIMETERS) UNLESS OTHERWISE SHOWN.

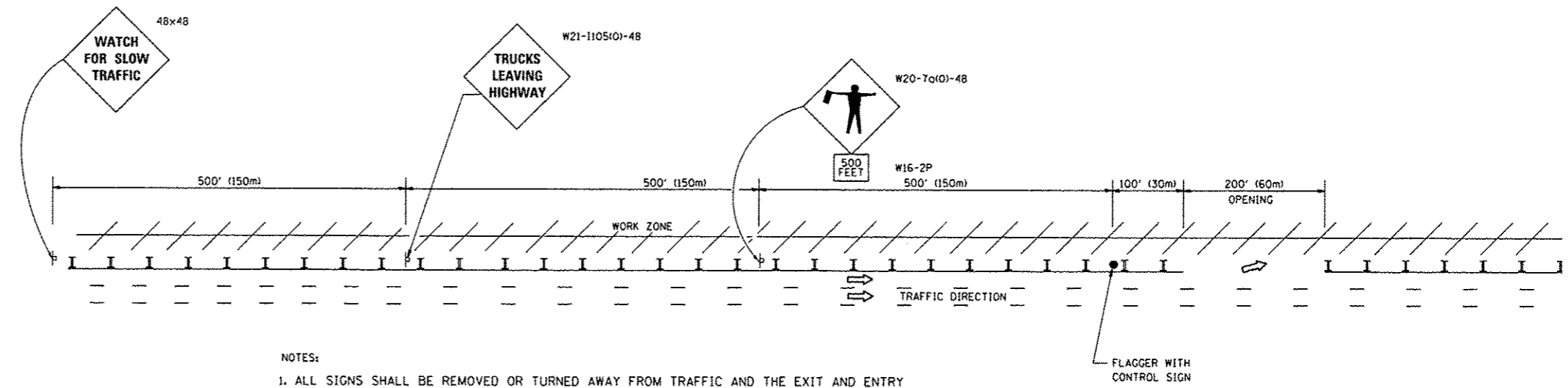
FILE NAME =	USER NAME = pyzanoskirk	DESIGNED -	REVISED - J.A.F. 12-06	<b>STATE OF ILLINOIS DEPARTMENT OF TRANSPORTATION</b>	<b>TRAFFIC CONTROL DETAILS FOR FREEWAY SHOULDER CLOSURES AND PARTIAL RAMP CLOSURES</b>		F.A. RTE.	SECTION	COUNTY	TOTAL SHEETS	SHEET NO.		
pw\11884EBID\INTEG\Illinois.gov\WIDOT\Documents\1807 Offices\District 1\Projects\DI30\DRM\Design\DWG\15-shr-plan.dgn		CHECKED -	REVISED - S.P.B. 01-07		SCALE: NONE	SHEET NO. 1 OF 1 SHEETS	STA.	TO STA.	VAR.	2016-046GRR	VARIOUS	29	28
PLOT SCALE = 100.0000' / 1"		DATE - 11-96	REVISED - S.P.B. 12-09						TC-17				
PLOT DATE = 6/15/2016			REVISED - M.D. 06-13						FED. ROAD DIST. NO. 1	ILLINOIS	FED. AID PROJECT		

SIGNING FOR FLAGGING OPERATIONS AT WORK ZONE OPENINGS

WORK ZONE EXIT OPENING



WORK ZONE ENTRY OPENING



NOTES:

1. ALL SIGNS SHALL BE REMOVED OR TURNED AWAY FROM TRAFFIC AND THE EXIT AND ENTRY OPENINGS SHALL BE CLOSED WHEN THE FLAGGING OPERATION CEASES. NON OPERATING EQUIPMENT SHALL COMPLY WITH ARTICLE 701.11
2. WORK ZONE OPENINGS SHALL BE A MINIMUM OF ONE HALF MILE APART AND A MINIMUM OF ONE QUARTER MILE FROM ALL ENTRANCE AND EXIT RAMP.
3. EXITING THE WORK ZONE AT ANY PLACE OTHER THAN AT A WORK ZONE EXIT OPENING WILL BE PROHIBITED.
4. ALL VEHICLES SHALL ENTER THE WORK ZONE AT ENTRY OPENINGS, USING THEIR TURN SIGNALS TO WARN MOTORISTS
5. FLAGGERS SHALL NOT STOP TRAFFIC OR DIRECT TRAFFIC INTO AN ADJACENT LANE.

ALL DIMENSIONS ARE IN INCHES (MILLIMETERS) UNLESS OTHERWISE SHOWN

FILE NAME =	USER NAME = pyzenowakrb	DESIGNED -	REVISED - J.A.F. 02-06	<b>STATE OF ILLINOIS DEPARTMENT OF TRANSPORTATION</b>	<b>FREEWAY/EXPRESSWAY SIGNING FOR FLAGGING OPERATIONS AT WORK ZONE OPENINGS ON FREEWAYS/EXPRESSWAYS</b>	F.A. RTE.	SECTION	COUNTY	TOTAL SHEETS	SHEET NO.
path: \\NL084EBID\INTEG.11\inois.gov\FWIDOT\Documents\100T Offices\District 1\Projects\DI38415-ehs-plan.dgn	CHECKED -	REVISED - S.P.B. 01-07	VAR.			2016-046GRR	VARIOUS	29	29	
PLOT SCALE = 100.0000' / in.	DATE -	REVISED - S.P.B. 12-09	TC-18			CONTRACT NO. 62D27				
PLOT DATE = 6/15/2016	DATE -	REVISED - M.D. 06-13	SCALE: NONE			SHEET NO. 1 OF 1 SHEETS		STA. TO STA.		
						FED. ROAD DIST. NO. 1 ILLINOIS FED. AID PROJECT				